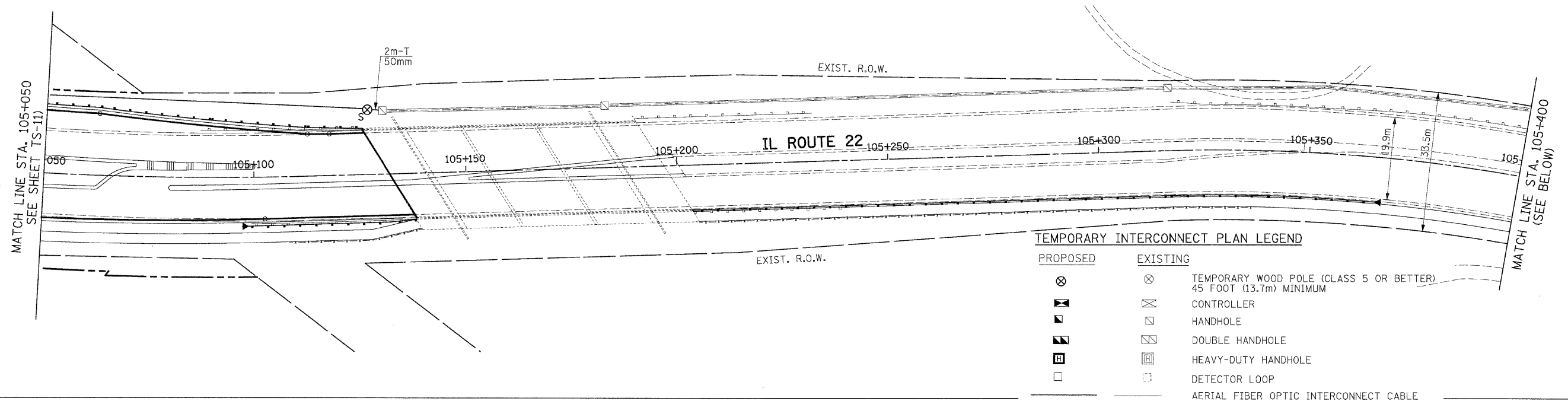
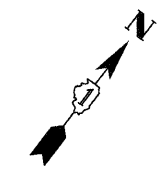
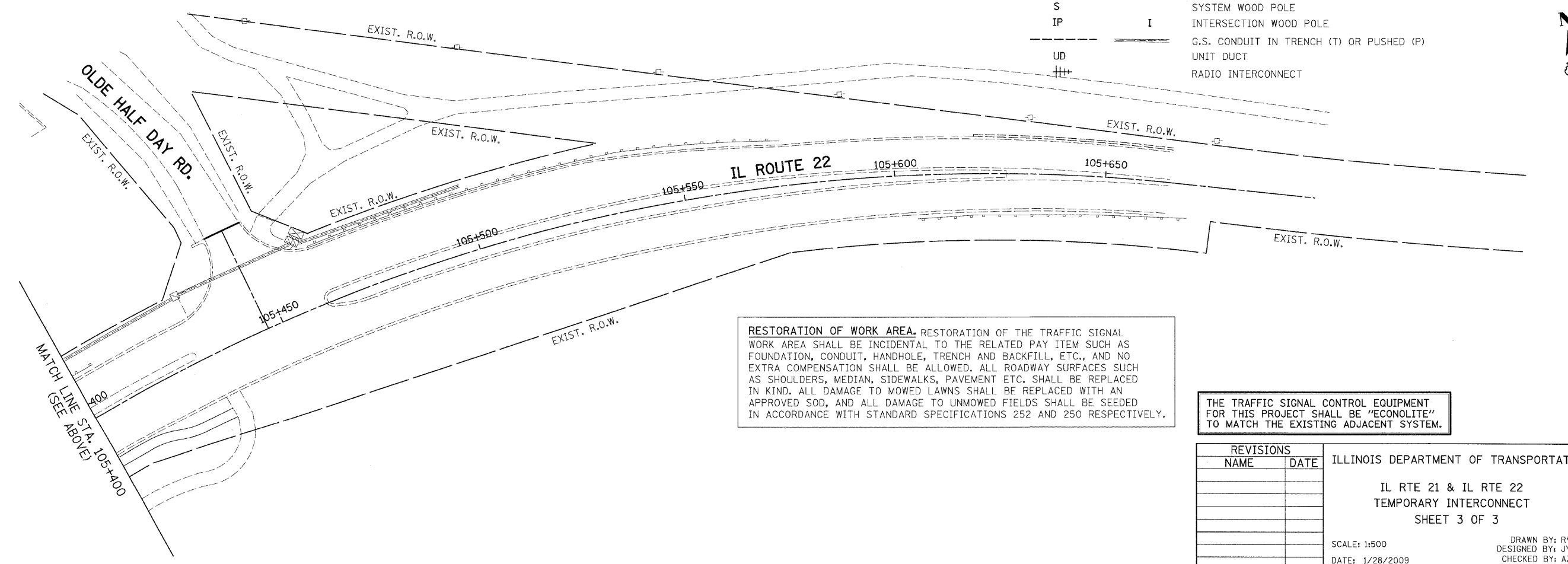


F.A.P. RTE.	SECTION	COUNTY	TOTAL SHEETS	SHEET NO.
337	20R-6	LAKE	149	75
STA.		TO STA.		
FED. ROAD DIST. NO.		ILLINOIS FED. AID PROJECT		



TEMPORARY INTERCONNECT PLAN LEGEND

PROPOSED	EXISTING	
⊗	⊗	TEMPORARY WOOD POLE (CLASS 5 OR BETTER) 45 FOOT (13.7m) MINIMUM
⊗	⊗	CONTROLLER
⊗	⊗	HANDHOLE
⊗	⊗	DOUBLE HANDHOLE
⊗	⊗	HEAVY-DUTY HANDHOLE
⊗	⊗	DETECTOR LOOP
—	—	AERIAL FIBER OPTIC INTERCONNECT CABLE
S		SYSTEM WOOD POLE
IP	I	INTERSECTION WOOD POLE
—	—	G.S. CONDUIT IN TRENCH (T) OR PUSHED (P)
UD		UNIT DUCT
+		RADIO INTERCONNECT



RESTORATION OF WORK AREA. RESTORATION OF THE TRAFFIC SIGNAL WORK AREA SHALL BE INCIDENTAL TO THE RELATED PAY ITEM SUCH AS FOUNDATION, CONDUIT, HANDHOLE, TRENCH AND BACKFILL, ETC., AND NO EXTRA COMPENSATION SHALL BE ALLOWED. ALL ROADWAY SURFACES SUCH AS SHOULDERS, MEDIAN, SIDEWALKS, PAVEMENT ETC. SHALL BE REPLACED IN KIND. ALL DAMAGE TO MOWED LAWNS SHALL BE REPLACED WITH AN APPROVED SOD, AND ALL DAMAGE TO UNMOWED FIELDS SHALL BE SEEDED IN ACCORDANCE WITH STANDARD SPECIFICATIONS 252 AND 250 RESPECTIVELY.

THE TRAFFIC SIGNAL CONTROL EQUIPMENT FOR THIS PROJECT SHALL BE "ECONOLITE" TO MATCH THE EXISTING ADJACENT SYSTEM.

REVISIONS	
NAME	DATE

ILLINOIS DEPARTMENT OF TRANSPORTATION
 IL RTE 21 & IL RTE 22
 TEMPORARY INTERCONNECT
 SHEET 3 OF 3
 SCALE: 1:500
 DATE: 1/28/2009
 DRAWN BY: RV
 DESIGNED BY: JY/AS
 CHECKED BY: AZ/MSA

PATRICK ENGINEERING INC.
 ENGINEERING INC.
 LISLE, ILLINOIS
 P:\Lisle\100T\9171.A0\Drawings\RDWY\MI\Shls\Traf\TMPint3.dgn
 2/5/2009 10:29:39 PM