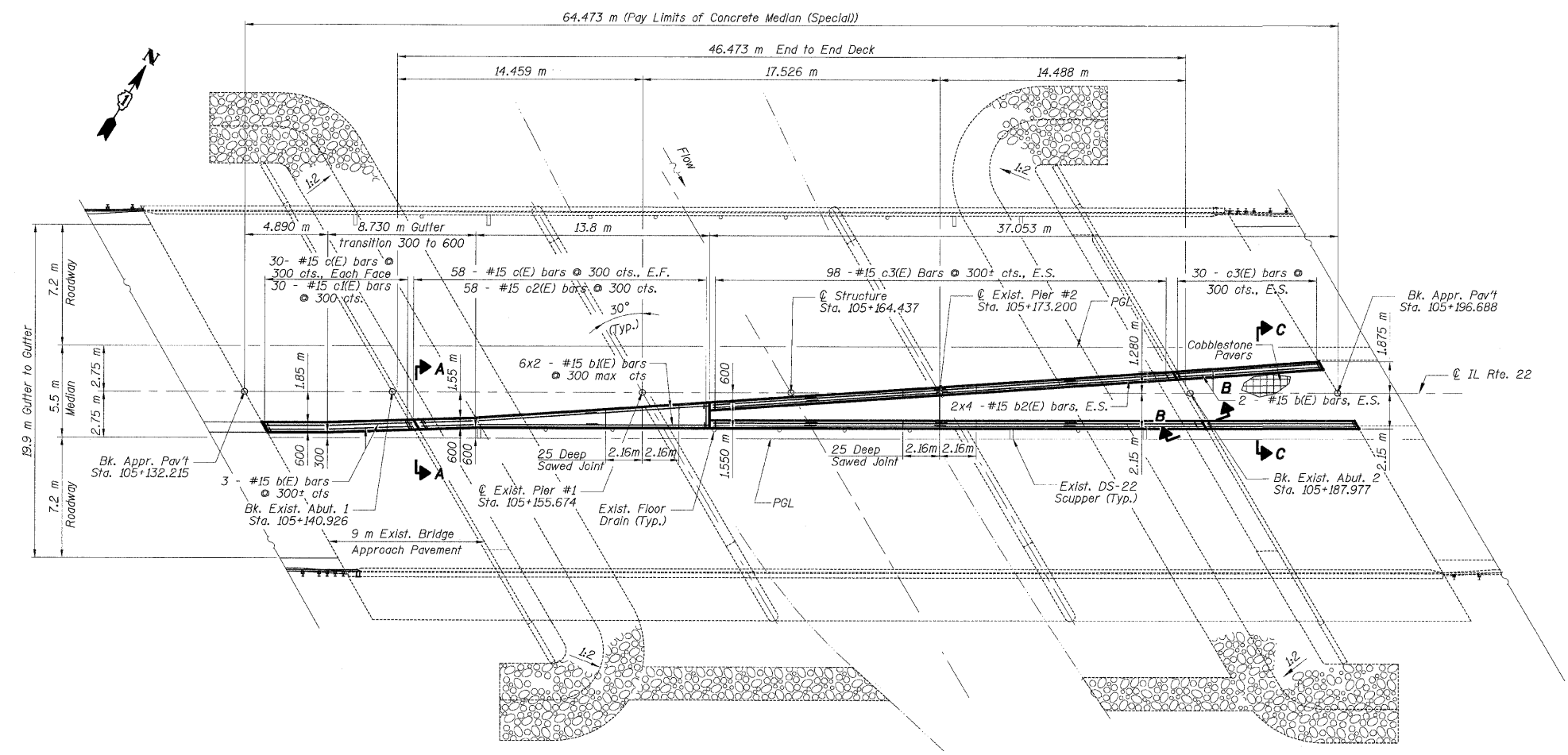
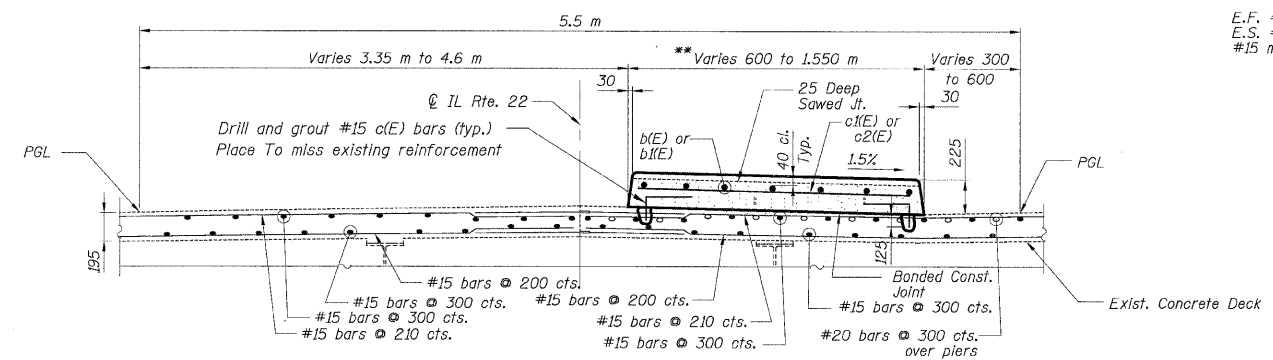


F.A.P. RTE.	SECTION	COUNTY	TOTAL SHEETS	SHEET NO.
337	20R-6	LAKE	149	86
STA.	TO STA.			
FED. ROAD DIST. NO.	ILLINOIS FED. AID PROJECT			
CONTRACT NO. 62519				

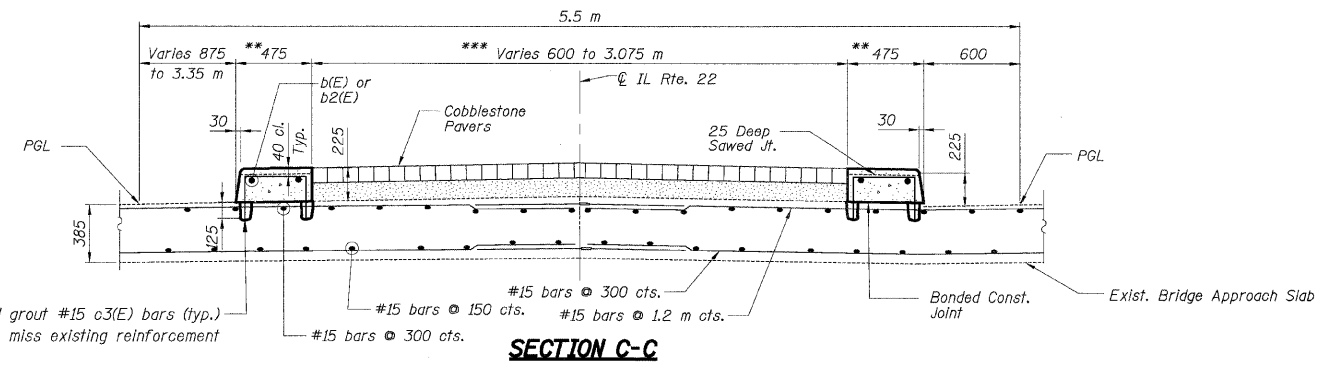


PLAN
 E.F. = Each Face
 E.S. = Each Side
 #15 min lap = 660

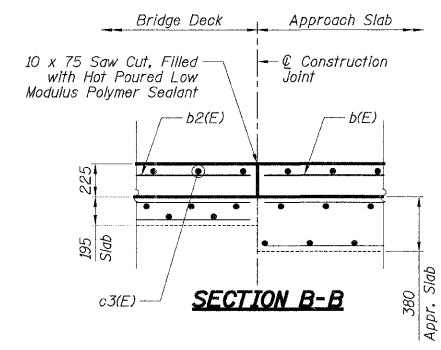


SECTION A-A

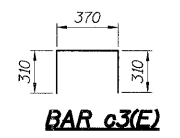
** - Pay Limits of Concrete Median (Special)
 *** - Pay Limits of Cobblestone Pavers



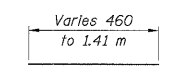
SECTION C-C



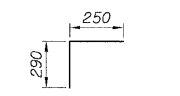
SECTION B-B



BAR c3(E)



BAR c2(E)



BAR c(E)

REINFORCEMENT BAR SCHEDULE

For Concrete Median (Special)

Bar	No.	Size	Length (m)	Shape
b(E)	7	#15	8.92	—
b1(E)	12	#15	9.02	—
b2(E)	16	#15	7.80	—
c(E)	176	#15	0.54	┌
c1(E)	30	#15	0.52	┌
c2(E)	88	#15	Varies	—
c3(E)	256	#15	0.99	┌

BILL OF MATERIAL

Item	Unit	Quantity
* Concrete Median (Special)	m ²	57
* Cobblestone Pavers	m ²	70

* - See Special Provisions

REVISIONS	
NAME	DATE

ILLINOIS DEPARTMENT OF TRANSPORTATION
 FAP ROUTE 337 (IL ROUTE 22)
 CONCRETE MEDIAN (SPECIAL)
 AT INDIAN CREEK BRIDGE
 SCALE: NONE
 DATE: 1/28/2009
 DRAWN BY: BWS/APD
 CHECKED BY: GJH/AY

P:\Lislie\DOT\9171\A0\Drawings\STRUCT\conc med (spl)\IndianCrk_medi...
 PDF(Grey_Large).plt
 5:16:33 PM
 2/5/2009
 kjoeppe(Rdwy_Lislie)
PATRICK ENGINEERING INC.
 LISIE, ILLINOIS