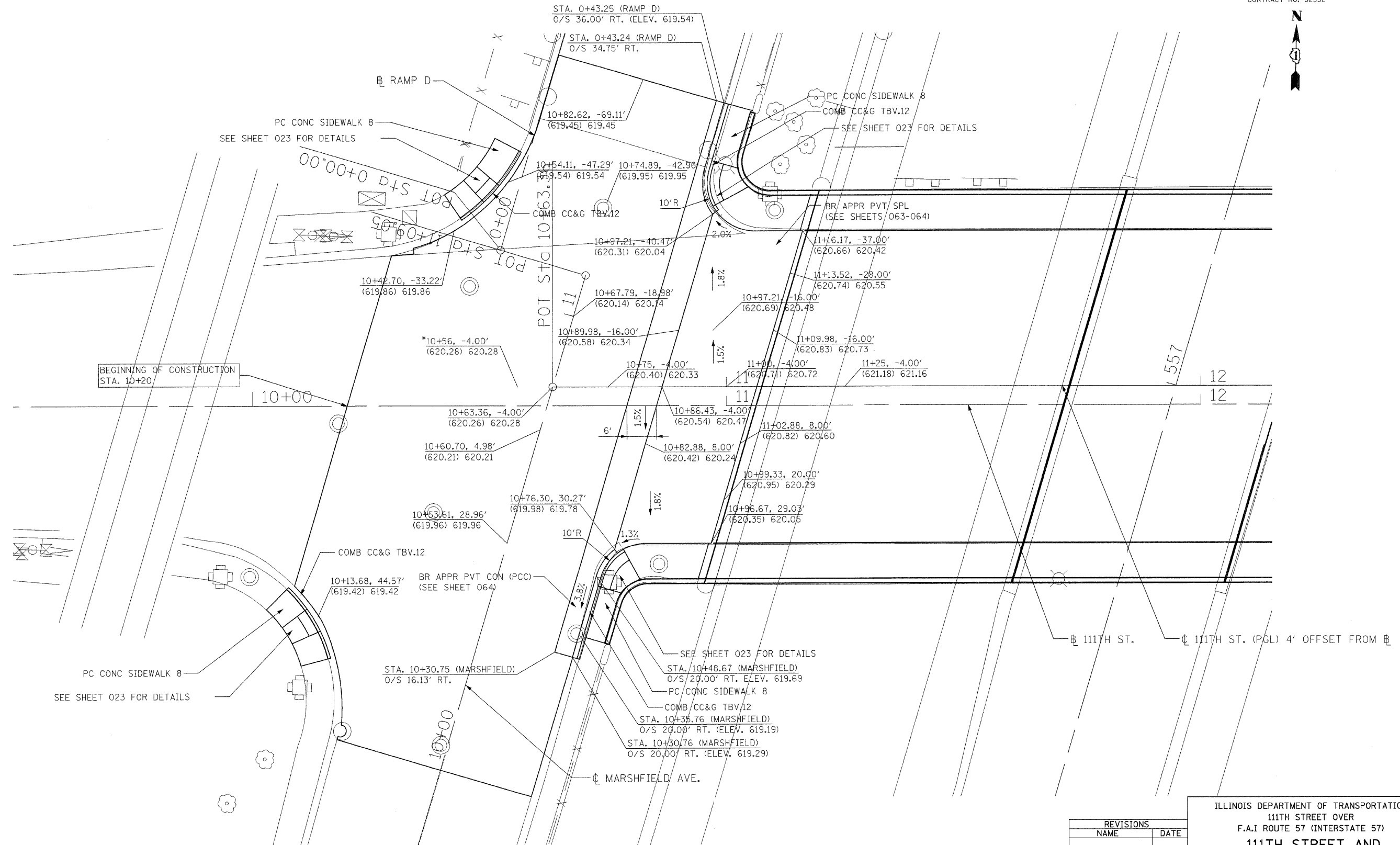


F.A.I. RTE.	SECTION	COUNTY	TOTAL SHEETS	SHEET NO.
57	2021JB-R	COOK	101	021
STA.		TO STA.		
FED. ROAD DIST. NO. 1		ILLINOIS	FED. AID PROJECT	
CONTRACT NO. 62532				



PROPOSED INTERSECTION GRADING PLAN
FOR 111TH STREET AND MARSHFIELD AVE.

NOTE: ALL STATIONING MEASURED OFF 111TH STREET UNLESS OTHERWISE NOTED.
 * CONTRACTOR SHALL VERIFY EXISTING ELEVATION PRIOR TO CONSTRUCTION

LEGEND

STATION, OFFSET
(EXIST. ELEV.) PROP. ELEV.

REVISIONS	
NAME	DATE

ILLINOIS DEPARTMENT OF TRANSPORTATION
 111TH STREET OVER
 F.A.I ROUTE 57 (INTERSTATE 57)
**111TH STREET AND
 MARSHFIELD AVE
 INTERSECTION GRADING PLAN**
 SCALE: 1"=10'
 DATE: 01/16/09
 DRAWN BY: BRH
 CHECKED BY: ACL
TENG
TENG & ASSOCIATES, INC.
 ENGINEERS/ARCHITECTS/PLANNERS
 205 N. MICHIGAN AVE., CHICAGO, IL 60601
 TELEPHONE: 312/616-0000

\\AL\T00N8\DOCN...ATP000\DOCN...AT100N8\DOCN...S\000N5\DOCN...R\000T00E\DOCN
 H6-2003_11-4-24
 F:\DOCUMENT\930860\CIVIL\DOCN\RD\000S\DOCN
 1 2 3 4 5 6 7 8 9 10 11 12 13 14 15 16 17 18 19 20 21 22 23 24 25 26 27 28 29 30 31 32 33 34 35 36 37 38 39 40 41 42 43 44 45 46 47 48 49 50 51 52 53 54 55 56 57 58 59 60 61 62