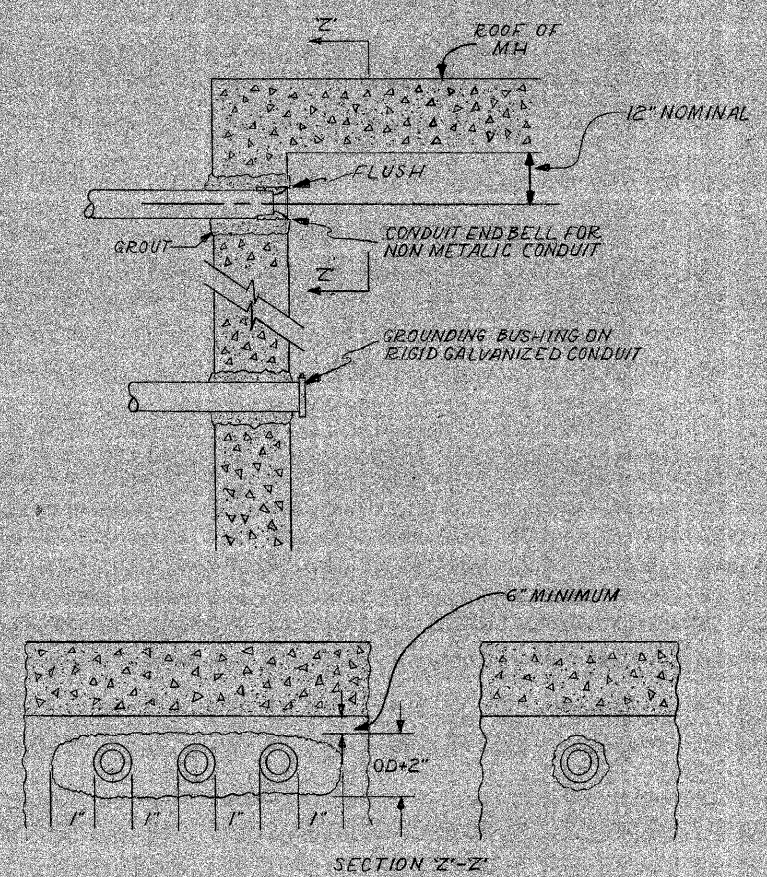


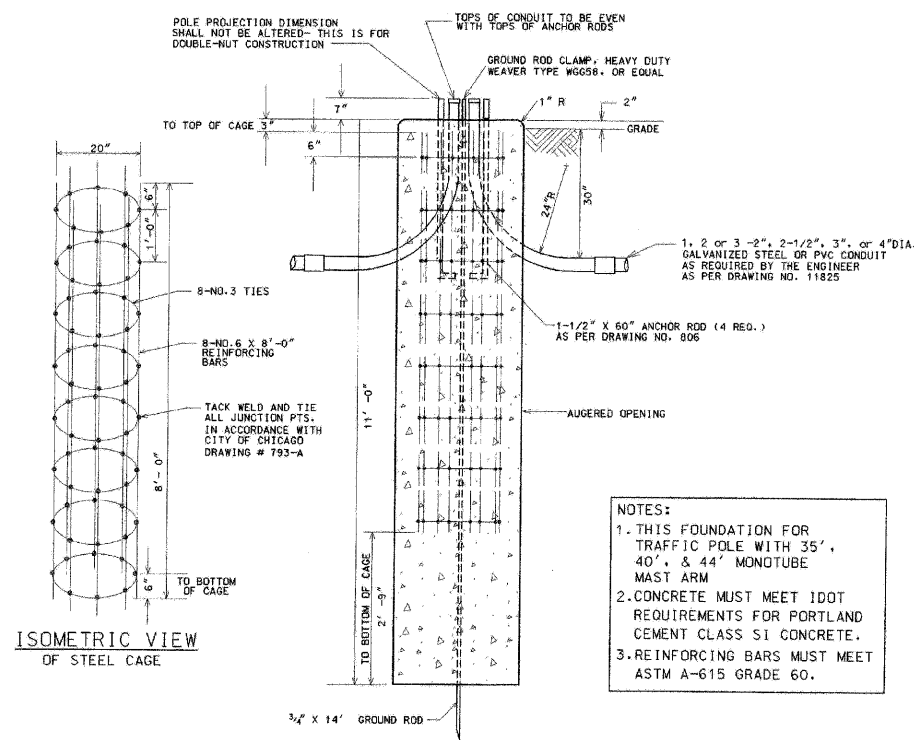
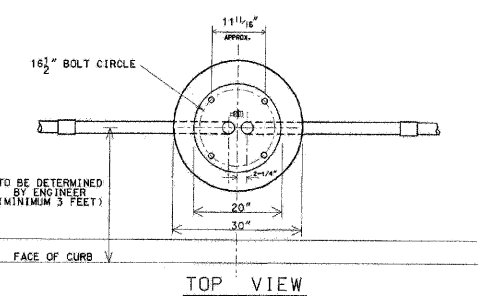
F.A.I. RTE.	SECTION	COUNTY	TOTAL SHEETS	SHEET NO.
57	2021.1B-R	COOK	101	041
STA.	TO STA.			
FED. ROAD DIST. NO. 1 ILLINOIS FED. AID PROJECT				
CONTRACT NO. 62532				

CONDUIT INSTALLATION THROUGH EXISTING MANHOLE OR HANDHOLE WALL



OPENING THROUGH WALL TO BE KEPT TO MINIMUM SIZE TO ADMIT CONDUIT AND SUFFICIENT GROUT TO ASSURE SEALING WALL.

INSTALLATION METHOD OF INSTALLING CONDUIT THRU MANHOLE WALL		
CITY OF CHICAGO DEPT. OF STREETS AND SANITATION BUREAU OF ELECTRICITY DIVISION OF ELECTRICAL ENGINEERING		
DRAWN A.M. JOHNSON	CHECKED R. SYCKOWSKI	ENGINEER R.L. MARTIN
 ENGINEER OF ELECTRICITY 814		DRG. NO. 814
SIZE 8 1/2" X 14"	SCALE N.T.S.	DATE 7-13-01



ISOMETRIC VIEW OF STEEL CAGE

ELEVATION

NOTE: HOLE FOR FOUNDATION MUST BE AUGERED IN UNDISTURBED SOIL

- NOTES:
1. THIS FOUNDATION FOR TRAFFIC POLE WITH 35', 40', & 44' MONOTUBE MAST ARM
 2. CONCRETE MUST MEET IDOT REQUIREMENTS FOR PORTLAND CEMENT CLASS S1 CONCRETE.
 3. REINFORCING BARS MUST MEET ASTM A-615 GRADE 60.

CODE	COMMODITY	SIZE	QUANTITY
05-3267-2940	RED-MIX CONCRETE	CU. YD.	2.20
09-4001-	ELBOW, LARGE RADIUS	2" x 2-1/2" x 3" x 4"	AS REQUIRED
37-8180-0200	ANCHOR ROD	1-1/2" x 60"	4
05-5054-6910	RE-BAR CAGE	20" x 8' x 8'-0"	1
09-7796	GROUND ROD	3/4" x 14'-0"	1
09-2436-	GROUND ROD CLAMP	3/4"	1
09-2092-	GROUND BUSHING	2" x 2-1/2" x 3" x 4"	AS REQUIRED

8/21/02	SUPERCEDES DWG #B17 DRAWN 4/20/01
DATE	REVISION
FOUNDATION FOR 34'-6" TRAFFIC SIGNAL POLE WITH 16 1/2" BOLT CIRCLE	
CITY OF CHICAGO DEPT. OF STREETS AND SANITATION BUREAU OF ELECTRICITY DIVISION OF ELECTRICAL ENGINEERING	
DRAFTSMAN B. GARNSEY	CHECKED R. CARTER
ELECTRICAL ENGINEER	ENGINEER
817	DRAWING NO.
11" x 17"	SCALE: NONE
	DATE: 8/21/02

REVISIONS	
NAME	DATE

ILLINOIS DEPARTMENT OF TRANSPORTATION
111TH STREET OVER
F.A.I. ROUTE 57 (INTERSTATE 57)
ELECTRICAL STANDARD DETAILS

SCALE: NONE
DATE: 01/16/09
DRAWN BY: N/A
CHECKED BY: N/A

TENG
TENG & ASSOCIATES, INC.
ENGINEERS/ARCHITECTS-PLANNERS
205 N. MICHIGAN AVE., CHICAGO, IL 60601
TELEPHONE: 312/616-0000

I:\DOCUMENTS\93060\06\CIVIL\CONCRETE\RD01.DWG
 1-18-2009 10:41:42
 1 2 3 4 5 6 7 8 9 10 11 12 13 14 15 16 17 18 19 20 21 22 23 24 25 26 27 28 29 30 31 32 33 34 35 36 37 38 39 40 41 42 43 44 45 46 47 48 49 50 51 52 53 54 55 56 57 58 59 60 61 62 63
 HFC/RRB
 4-NORTH ST. BOULDER, CO
 1-18-2009 10:41:42

ES-05