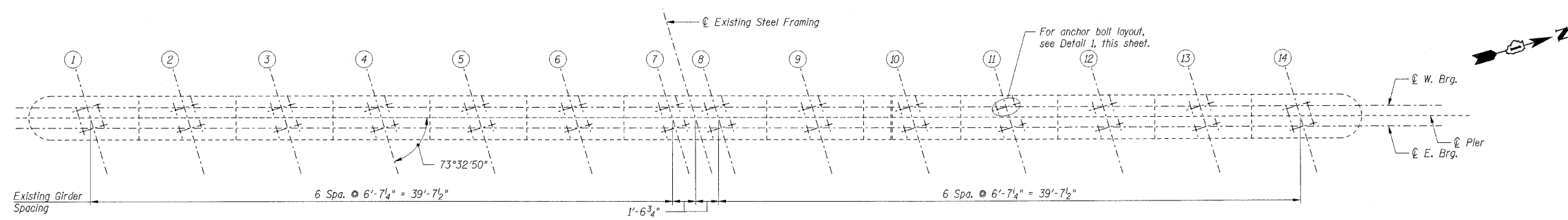
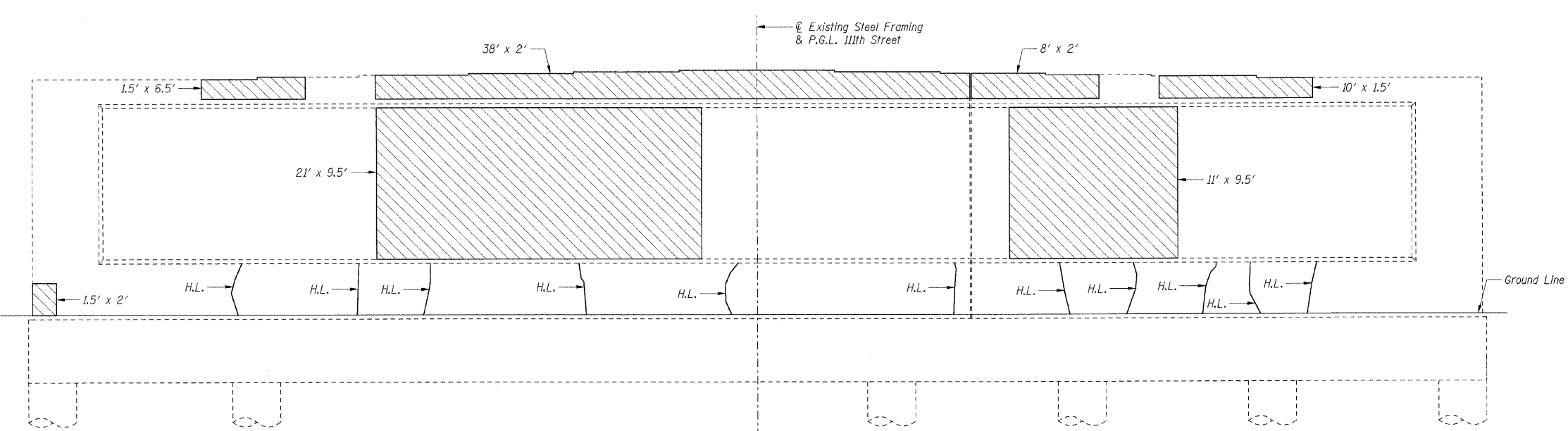


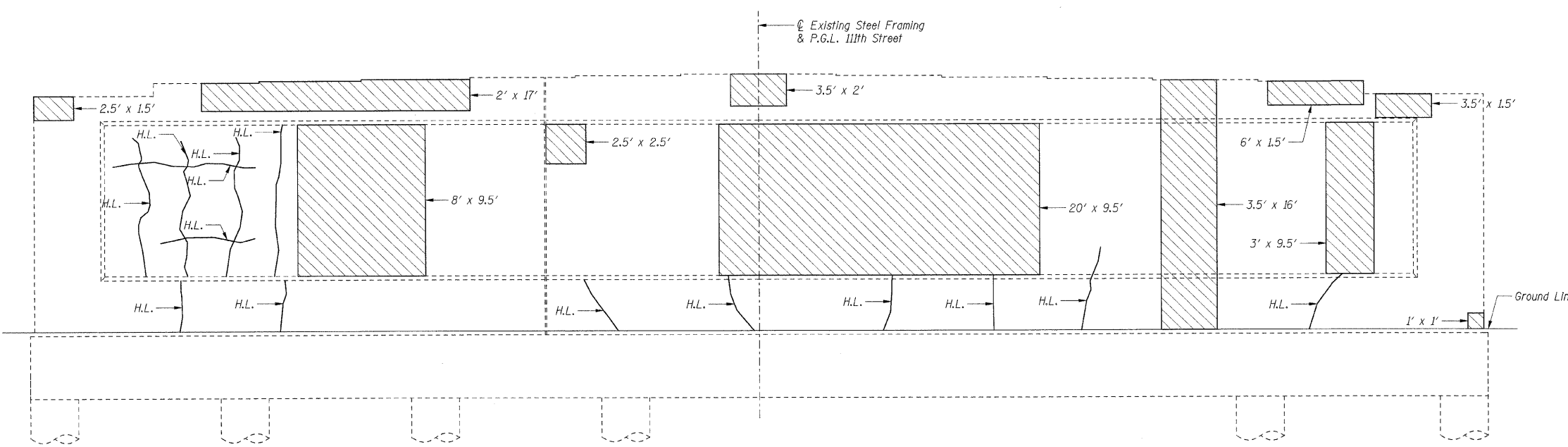
F.A.I. RTE.	SECTION	COUNTY	TOTAL SHEETS	SHEET NO.
57	2021.1B-R	COOK	101	083
STA.		TO STA.		
FED. ROAD DIST. NO. 1		ILLINOIS FED. AID PROJECT		
CONTRACT NO. 62532				



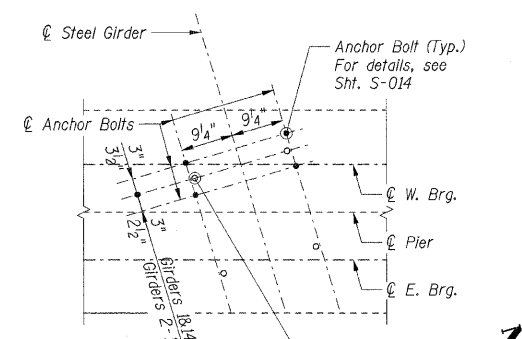
TOP PLAN



ELEVATION
(Looking West)



ELEVATION
(Looking East)



DETAIL 1

Burn existing anchor bolts flush with existing concrete surface. Grind existing anchor bolt smooth and seal with epoxy. Cost is included with Jack and Remove Existing Bearings.

- Notes:**
- Quantities indicated with a double asterisk (**) are estimated quantities to be determined by the Engineer in the field. Adjustment to the quantities shall not be cause for additional compensation; however the Contractor will be paid for the quantity of work performed at the unit price bid for the work.
 - For anchor bolt installation details, see Sht. S-014.
 - Crack widths are $\frac{1}{8}'' \pm \frac{1}{16}''$ unless otherwise noted.
 - Girders bearing on the east side of the pier shall be supported during concrete repairs in accordance with the Special Provision for Temporary Shoring and Cribbing.
 - Girders bearing on the west side of the pier shall be supported during concrete repairs. Cost shall be included with Jack and Remove Existing Bearings.
 - Concrete Sealer shall be applied to the bearing seats.

- LEGEND**
- Structural Repair of Concrete, Depth Equal to or Less Than 5"
 - H.L. Hairline Crack - Not to be Sealed

BILL OF MATERIAL		
Item	Unit	Total
Concrete Sealer	Sq Ft	271
Structural Repair of Concrete, Depth Equal to or Less Than 5" **	Sq Ft	950

REVISIONS	
NAME	DATE

SHT. S-019

ILLINOIS DEPARTMENT OF TRANSPORTATION
F.A.I. ROUTE 57 (INTERSTATE 57)
111TH STREET BRIDGE DECK REPLACEMENT
111TH STREET OVER I-57
SN 016-0989 STA. 556+99.89
COOK COUNTY

PIER 2 REPAIRS

DATE: 01/16/09

DRAWN BY: TMH
CHECKED BY: JLR

TENG
TENG & ASSOCIATES, INC.
ENGINEERS/ARCHITECTS/PLANNERS
205 N. MICHIGAN AVE., CHICAGO, IL 60601
TELEPHONE: 312.618.0000

\CPROJ\2009\111STBRIDGE\111STBRIDGE.DGN, \PROJ\111STBRIDGE\111STBRIDGE.DGN, \PROJ\111STBRIDGE\111STBRIDGE.DGN, \PROJ\111STBRIDGE\111STBRIDGE.DGN
 3-03-2009 14:47:39
 T:\DOCUMENT\111STBRIDGE\STRUCT\111STBRIDGE.DGN
 color: table: K:\STANDARD\TENG\DATA\COLORTABLE.TBL
 pen: table: N/A