

**STAGES OF CONSTRUCTION
GENERAL NOTES**

- 1 THE ENGINEER SHALL BE INFORMED 72 HOURS IN ADVANCE OF ANY CHANGE TO THE STAGING PLANS, OR ANY CHANGE IN STAGE.
- 2 THE CONTRACTOR SHALL BE REQUIRED TO MAINTAIN ACCESS TO ALL ENTRANCES WITHIN THE PROJECT LIMITS. THE WORK SHALL BE PAID FOR AT THE CONTRACT UNIT PRICE PER EACH FOR "TEMPORARY ACCESS (PRIVATE ENTRANCE)" AND "TEMPORARY ACCESS (COMMERCIAL ENTRANCE)".
- 3 THE CONTRACTOR SHALL PLACE MESSAGE SIGNS WITH THE APPROPRIATE INFORMATION TO INFORM MOTORISTS OF INCOMING CONSTRUCTION ACTIVITIES. ALSO THE CONTRACTOR SHALL PLACE MESSAGE SIGNS WITH THE APPROPRIATE RIVER ACCESS NOTIFICATION. ALL THE ABOVE SIGNS SHALL BE MAINTAINED BY THE CONTRACTOR WITH THE UPDATED INFORMATION FOR THE DURATION OF CONSTRUCTION ACTIVITIES. THE MESSAGE SIGNS SHALL BE IN PLACE ONE WEEK PRIOR TO START OF CONSTRUCTION ACTIVITIES. THE WORK SHALL BE INCLUDED IN THE CONTRACT UNIT PRICE FOR "TEMPORARY INFORMATION SIGNING" (SEE ARTERIAL ROAD INFORMATION SIGN SHEET). THE LOCATION(S) FOR INFORMATIONAL SIGNS SHALL BE APPROVED BY THE ENGINEER PRIOR TO INSTALLATION.
- 4 THE CONTRACTOR SHALL MAINTAIN STEARNS ROAD CLOSED TO THE TRAFFIC AT THE INTERSECTION OF STEARNS ROAD AND McLEAN BLVD. FOR THE DURATION OF THE CONSTRUCTION OPERATIONS INCLUDING PROPOSED TRAFFIC SIGNAL INSTALLATION. THE CONTRACTOR SHALL COORDINATE CONSTRUCTION BARRICADES AND SIGNS INSTALLATION WITH ADJACENT CONSTRUCTION OPERATIONS.

SEQUENCE OF CONSTRUCTION

STAGE 1

- 1 TRAFFIC ON IL ROUTE 25 SHALL BE MAINTAINED IN BOTH DIRECTIONS. MAINTENANCE OF TRAFFIC IN ACCORDANCE WITH IDOT STANDARD 701006.
- 2 PLACE TRAFFIC CONTROL DEVICES, REMOVE EXISTING PAVEMENT MARKINGS AND CONSTRUCT TEMPORARY PAVEMENT MARKINGS PER MAINTENANCE OF TRAFFIC STAGE 1 PLAN.
- 3 REMOVE EXISTING SOUTHBOUND SHOULDER AND CONSTRUCT THE PROPOSED SOUTHBOUND IL ROUTE 25 PAVEMENT WIDENING, CURB OR SHOULDER AND DRAINAGE STRUCTURES TO THE LIMITS SHOWN ON THE PLANS AND DETAILS. REMOVE AND RELOCATE EXISTING GUARDRAIL.

STAGE 2

- 1 TRAFFIC ON IL ROUTE 25 SHALL BE MAINTAINED IN BOTH DIRECTIONS. MAINTENANCE OF TRAFFIC SHALL BE IN ACCORDANCE WITH IDOT STANDARD 701006.
- 2 PLACE TRAFFIC CONTROL DEVICES, REMOVE STAGE 1 TEMPORARY PAVEMENT MARKINGS AND CONSTRUCT TEMPORARY PAVEMENT MARKINGS PER MAINTENANCE OF TRAFFIC STAGE 2 PLAN.
- 3 RELOCATE TEMPORARY CONCRETE BARRIER AND ATTENUATOR FOR SOUTHBOUND TO THE LOCATION SHOWN ON STAGE 2 MAINTENANCE OF TRAFFIC PLANS.
- 4 CONSTRUCT TEMPORARY CONCRETE BARRIER AND ATTENUATOR FOR NORTHBOUND AS PER MAINTENANCE OF TRAFFIC STAGE 2 PLAN.
- 5 REMOVE EXISTING NORTHBOUND SHOULDER AND CONSTRUCT THE PROPOSED NORTHBOUND IL ROUTE 25 PAVEMENT WIDENING, CURB OR SHOULDER AND DRAINAGE STRUCTURES TO THE LIMITS SHOWN ON THE PLANS AND DETAILS. REMOVE AND RELOCATE EXISTING GUARDRAIL.

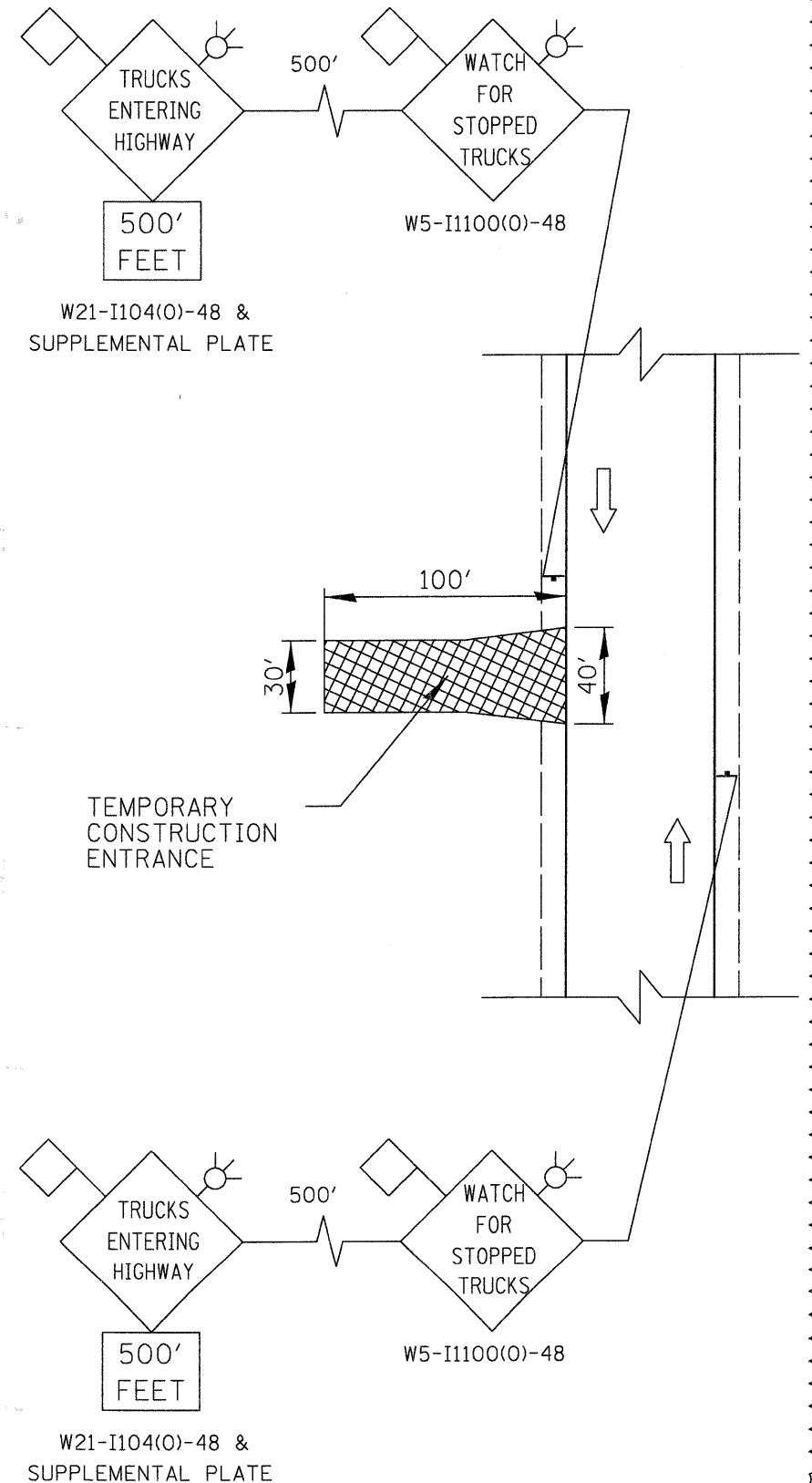
STAGE 3

- 1 TRAFFIC ON IL ROUTE 25 SHALL BE MAINTAINED IN BOTH DIRECTIONS. MAINTENANCE OF TRAFFIC SHALL BE IN ACCORDANCE WITH IDOT STANDARD 701301.
- 2 PLACE TRAFFIC CONTROL DEVICES, REMOVE STAGE 2 TEMPORARY PAVEMENT MARKINGS AND PLACE NEW TEMPORARY PAVEMENT MARKINGS. SHIFT BOTH NORTHBOUND AND SOUTHBOUND TRAFFIC TO THE WEST.
- 3 COLD MILL EXISTING NORTHBOUND LANE BITUMINOUS SURFACE. CONSTRUCT LEVELING BINDER TO THE LIMITS SHOWN ON PROPOSED PLANS FOR IL ROUTE 25. CONSTRUCT NEW BINDER AND SURFACE PAVEMENT FOR NORTHBOUND LANE INCLUDING NEW WIDENING AND RIGHT SHOULDER.
- 4 PAVE PROPOSED DRIVEWAYS ALONG EAST SIDE OF IL ROUTE 25.
- 5 SHIFT NB TRAFFIC ONTO NEW CONSTRUCTED NORTHBOUND PAVEMENT.
- 6 COLD MILL EXISTING SOUTHBOUND BITUMINOUS SURFACE. CONSTRUCT LEVELING BINDER TO THE LIMITS SHOWN ON PROPOSED PLANS FOR IL ROUTE 25. CONSTRUCT NEW BINDER AND SURFACE PAVEMENT FOR SOUTHBOUND LANE INCLUDING NEW WIDENING AND LEFT SHOULDER.
- 7 CONSTRUCT PROPOSED PAVEMENT MARKINGS PER PLANS ALONG IL ROUTE 25 IN ACCORDANCE WITH IDOT STANDARD 701311.

**TEMPORARY CONSTRUCTION ENTRANCE
NOTES**

SIGNAGE FOR TEMPORARY CONSTRUCTION ENTRANCE SHALL BE PLACED AS SHOWN IN THE DETAIL AT THE TEMPORARY CONSTRUCTION ENTRANCES AT McLEAN BOULEVARD, IL ROUTE 31 AND IL ROUTE 25

**TEMPORARY CONSTRUCTION
ENTRANCE DETAIL**



FILE NAME = IL25_mot_note01.mot	USER NAME = GYSherman	DESIGNED - GS	REVISED Δ -Addendum 4/9/09
		DRAWN - GS	REVISED -
	PLOT SCALE = 20.0000' / IN.	CHECKED - SE	REVISED -
	PLOT DATE = 4/9/2009	DATE - 01/16/09	REVISED -

**STATE OF ILLINOIS
DEPARTMENT OF TRANSPORTATION**

**IL ROUTE 25 MAINTENANCE OF TRAFFIC
GENERAL NOTES SEQUENCE OF CONSTRUCTION AND DETAILS**

SCALE: N.T.S. SHEET NO. 1 OF 5 SHEETS STA. TO STA.

F.A.P. RTE. 361	SECTION 06-00214-20-BR	COUNTY KANE	TOTAL SHEETS 320	SHEET NO. 43
CONTRACT NO.				
FED. ROAD DIST. NO. ILLINOIS FED. AID PROJECT				