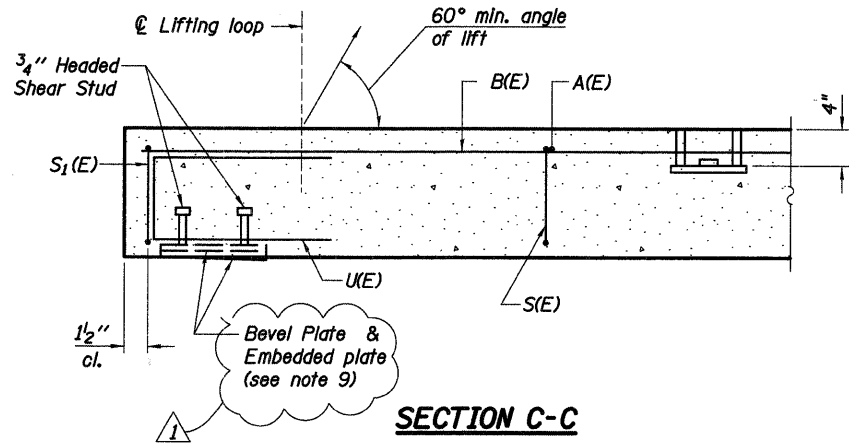
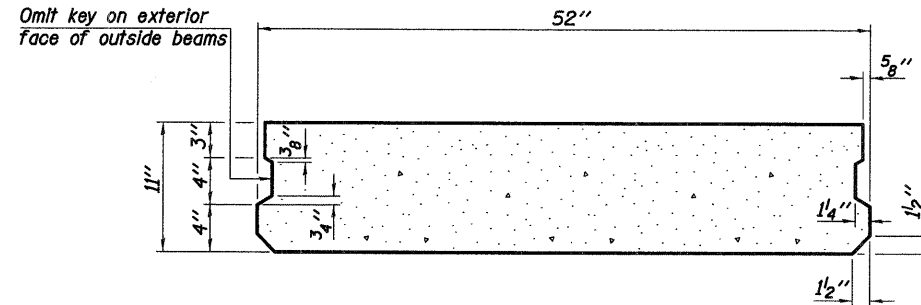


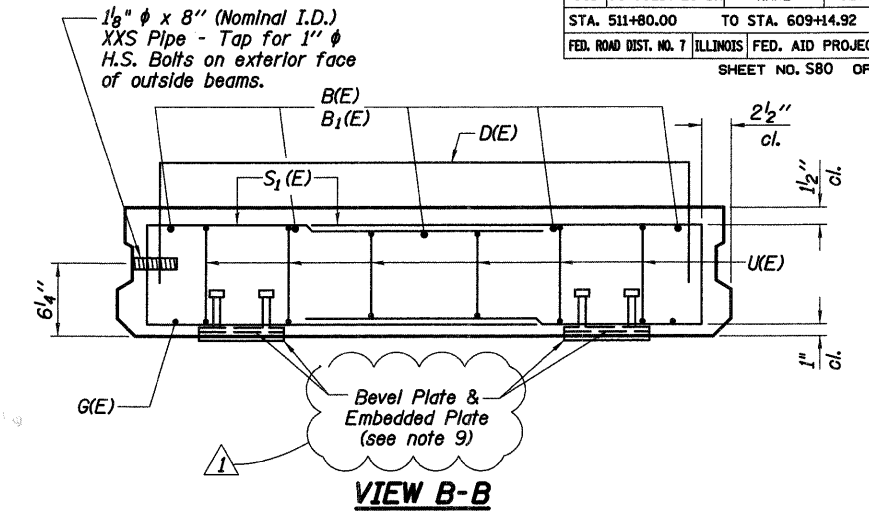
F.A.P. RTE.	SECTION	COUNTY	TOTAL SHEETS	SHEET NO.
361	06-00214-20-BR	KANE	320	185
STA. 511+80.00		TO STA. 609+14.92		
FED. ROAD DIST. NO. 7		ILLINOIS FED. AID PROJECT		
SHEET NO. S80 OF S108				



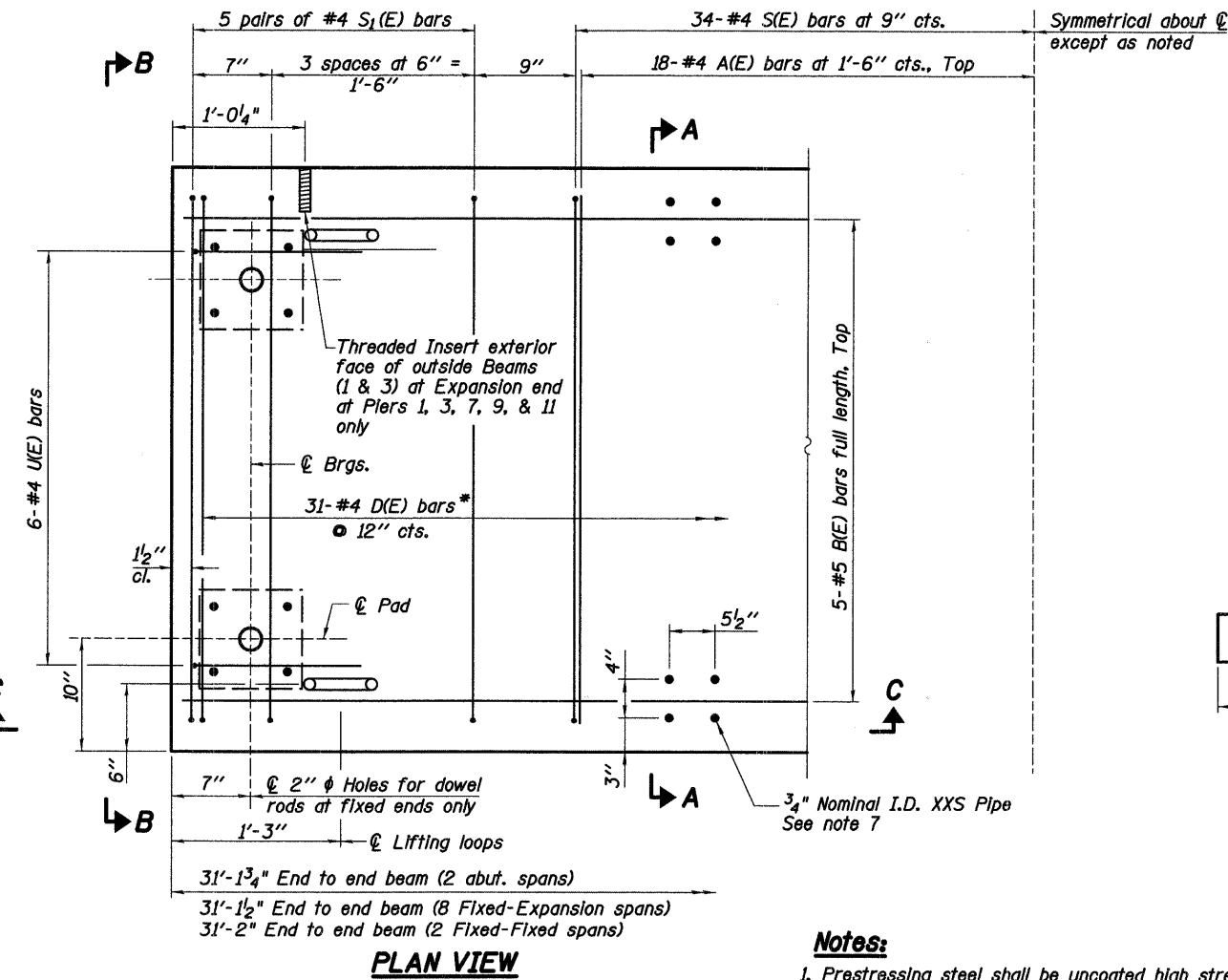
SECTION C-C



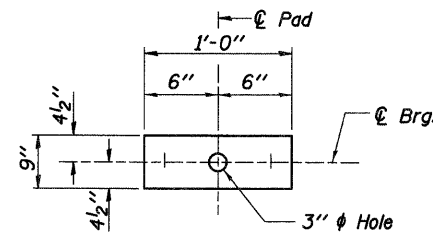
SECTION A-A
(Showing dimensions)



VIEW B-B

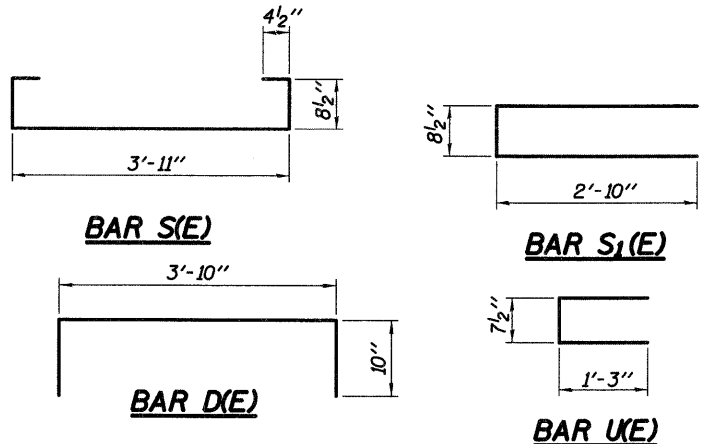


PLAN VIEW



FABRIC BEARING PAD
FIXED

Note: Omit holes when using expansion bearings.

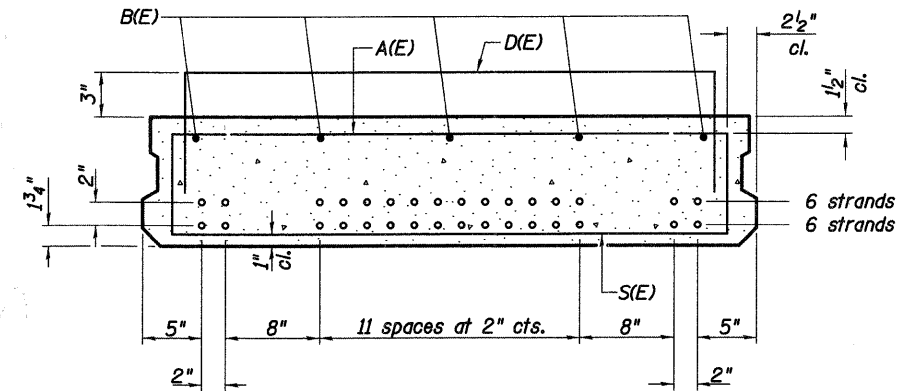


BAR S(E)

BAR S1(E)

BAR D(E)

BAR U(E)



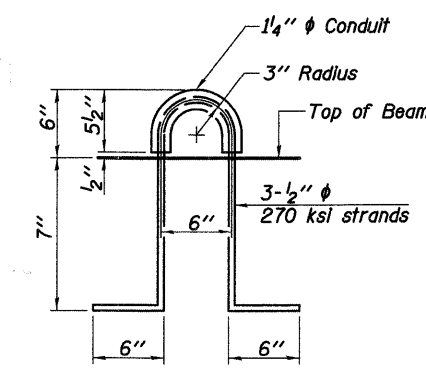
SECTION A-A

(Showing reinforcement and permissible strand locations)
Note: Place the number of strands specified in each row symmetrically about the centerline of beam in the permissible strand locations shown.

BAR LIST
ONE BEAM ONLY
(For information only)

Bar	No.	Size	Length	Shape
A(E)	18	#4	3'-11"	—
B(E)	5	#5	30'-10"	—
D(E)*	31	#5	5'-6"	□
S(E)	34	#4	6'-1"	□
S1(E)	20	#4	6'-5"	□
U(E)	12	#4	3'-2"	□

* Only present in beams 1 & 3



LIFTING LOOP DETAIL

BILL OF MATERIAL

Precast Prestressed Conc. Deck Bms. (11" depth)	Sq. Ft.	4,885
---	---------	-------

REVISIONS	
NAME	DATE
Δ Addendum	4/9/09

ILLINOIS DEPARTMENT OF TRANSPORTATION
MUP RAMP -
11" X 52" P.P.C. DECK BEAM
MULTI-USE PATH BRIDGE OVER THE FOX RIVER PUBLIC WATERS
STRUCTURE NUMBER 045-3164
KANE COUNTY FAP 361 SECTION 06-00214-20-BR
STATION 572+37.71 DESIGNED: DFM DRAWN: SGW
DATE: JANUARY 16, 2009 CHECKED: KPZ CHECKED: KPZ

Baker
Baker Engineering, Inc.

H:\3005\3.0 phase II deliverables\3.3 structure\drawings\Final\045-3164 MUP Ramp Deck Beam.dgn 4/9/2009

Notes:

- Prestressing steel shall be uncoated high strength, low relaxation 7-wire strand, Grade 270. The nominal diameter shall be 1/2" and the nominal cross-sectional area shall be 0.153 sq. in.
- Reinforcement Bars shall conform to ASTM A 706, Grade 60. See special provisions.
- Two 1/8" fabric adjusting shims of the dimensions of the bearing pad shall be provided for each bearing pad location. Cost of fabric bearing pads and Dowel Bars shall be included in Precast deck beams.
- A minimum 2 1/2" diameter lifting pin shall be used to engage the lifting loops during handling.
- Corrosion Inhibitor, per Article 1020.05(b)(12) and 1021.06 of the Standard Specifications, shall be used in the concrete for precast prestressed concrete deck beams.
- Compressive strength of prestressed concrete, f'c, shall be 6000 psi.
- Compressive strength of prestressed concrete at release, f'cl, shall be 5000 psi.
- See Sheet S81 of S108 for Bicycle Railing Anchor Details and Spacing.
- See Sheet S82 of S108 for Bevel Plate and Embedded Plate Details.

* Only present in beams 1 & 3