

F.A.P. RTE.	SECTION	COUNTY	TOTAL SHEETS	SHEET NO.
361	06-00214-20-BR	KANE	320	190
STA. 511+80.00		TO STA. 609+14.92		
FED. ROAD DIST. NO. 7		ILLINOIS FED. AID PROJECT		
SHEET NO. S85 OF S108				

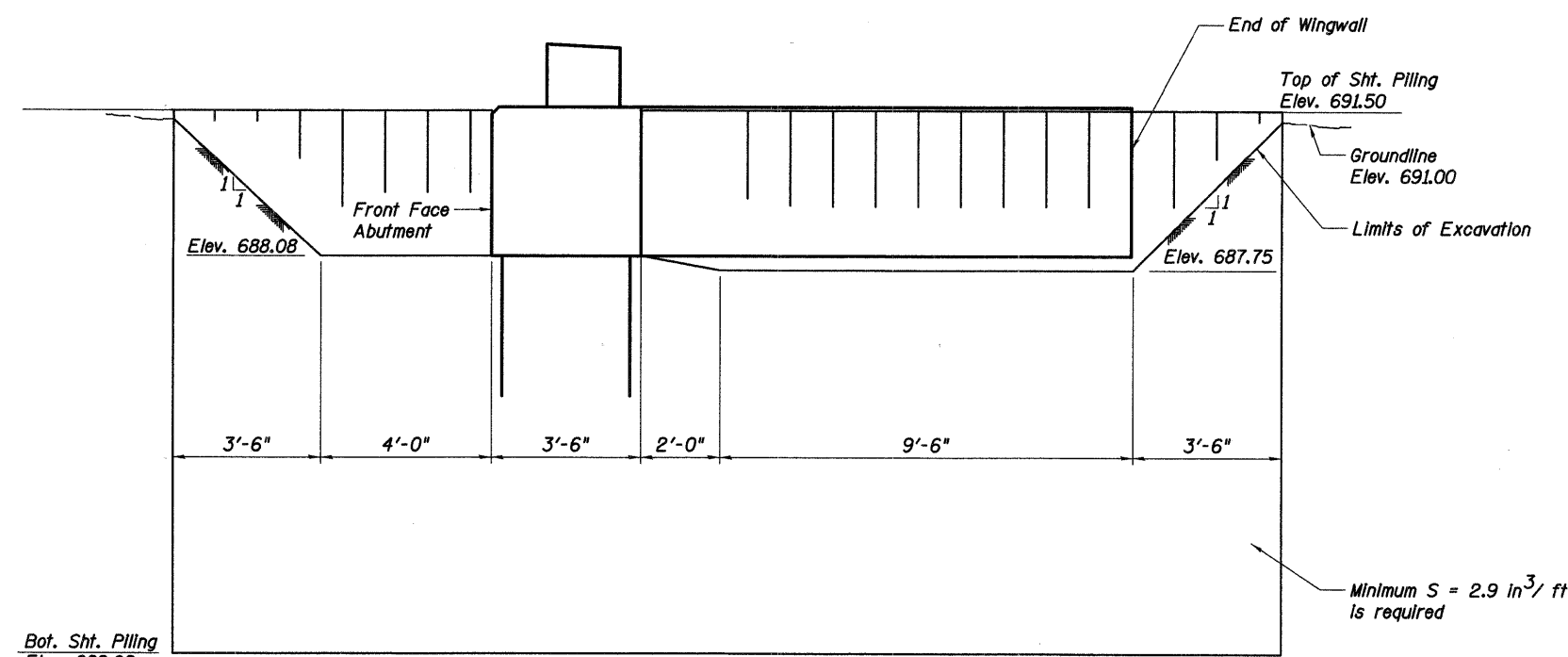
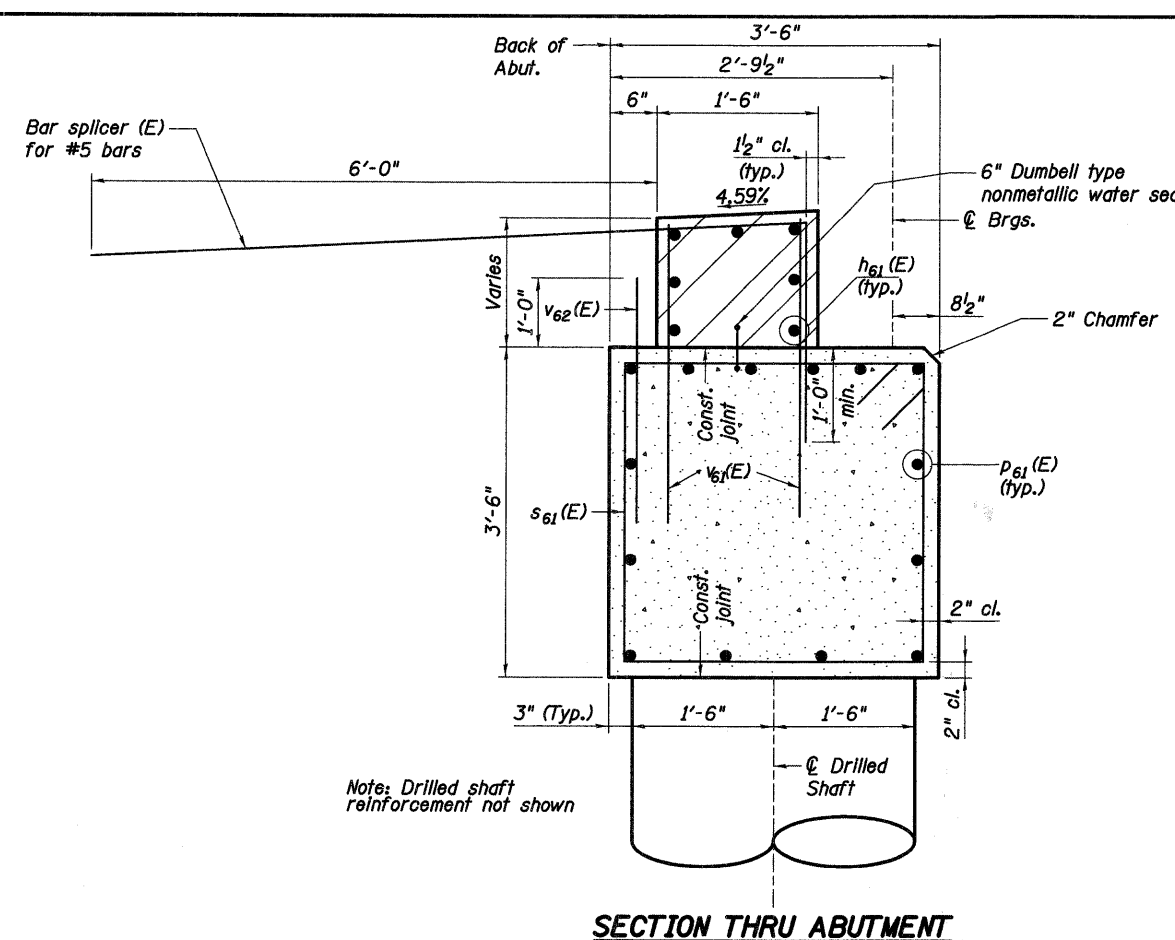
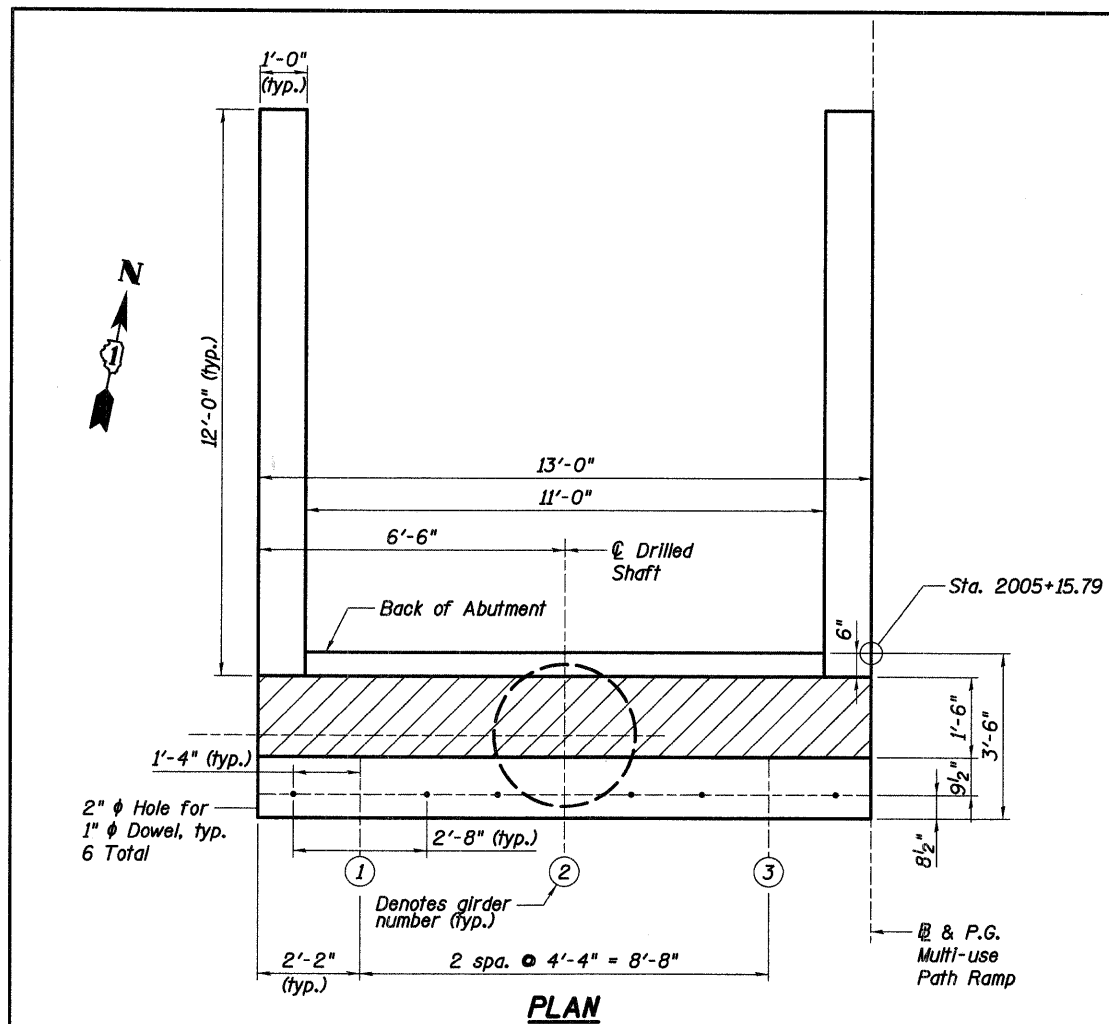
**MUP RAMP - NORTH ABUTMENT
BILL OF MATERIAL**

Bar	No.	Size	Length	Shape
$h_{61}(E)$	7	# 6	12'-8"	—
$h_{62}(E)$	24	# 6	11'-2"	—
$p_{61}(E)$	14	# 7	12'-8"	—
$p_{62}(E)$	24	# 5	4'-0"	—
$s_{61}(E)$	14	# 4	13'-7"	□
s_{p61}	1	# 5	66'-3"	MMMM
$v_{61}(E)$	28	# 5	4'-0"	—
$v_{62}(E)$	12	# 5	3'-0"	—
$v_{63}(E)$	52	# 5	3'-4"	—
$v_{64}(E)$	52	# 5	3'-3"	—
v_{65}	16	# 8	36'-0"	—
v_{67}	16	# 10	38'-9"	—
Concrete Structures			Cu. Yd.	11
Reinforcement Bars			Pound	5,600
Reinforcement Bars, Epoxy Coated			Pound	1,640
Structure Excavation			Cu. Yd.	17
Bar Splicers			Each	12

* length is height of spiral, provide minimum lap length of 2'-0"

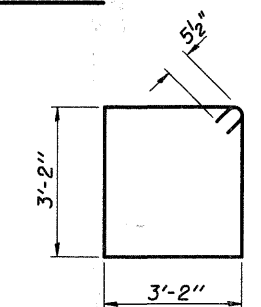
Notes:

- If the Contractor chooses to alter the temporary cantilevered sheet piling design requirements shown on the plans, a design submittal including plan details and calculations will be required for review and acceptance by the Engineer.
- For additional abutment details and notes see sheet S84 of S108.
- Cost of any existing bike path removal required for construction of the MUP Ramp, MUP Bridge, or approach slabs shall be included in the pay item "Structure Excavation".

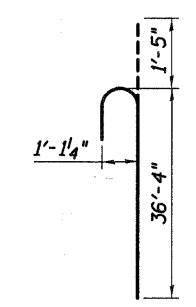


**NORTH MUP RAMP ABUTMENT
TEMPORARY SHEET PILING DETAILS**

The top and bottom elevation and length shown for the sheet piling are estimated



BAR $s_{61}(E)$



BAR v_{67}

REVISIONS	
NAME	DATE
Δ Addendum	4/9/09



ILLINOIS DEPARTMENT OF TRANSPORTATION
**MUP RAMP-
NORTH ABUTMENT DETAILS II**
MULTI-USE PATH BRIDGE OVER THE FOX RIVER PUBLIC
STRUCTURE NUMBER 045-3164 WATERS
KANE COUNTY FAP 361 SECTION 06-00214-20-BR
STATION 572+37.71 DESIGNED: DAP DRAWN: TMA
DATE: JANUARY 16, 2009 CHECKED: KPZ CHECKED: KPZ

h:\13005\3.0 phase II deliverables\3.3 structure\drawings\final\045-3164 MUP N Abut2.dgn 4/9/2009