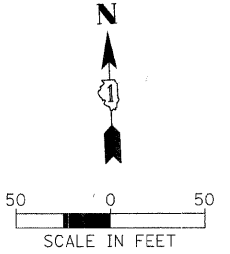
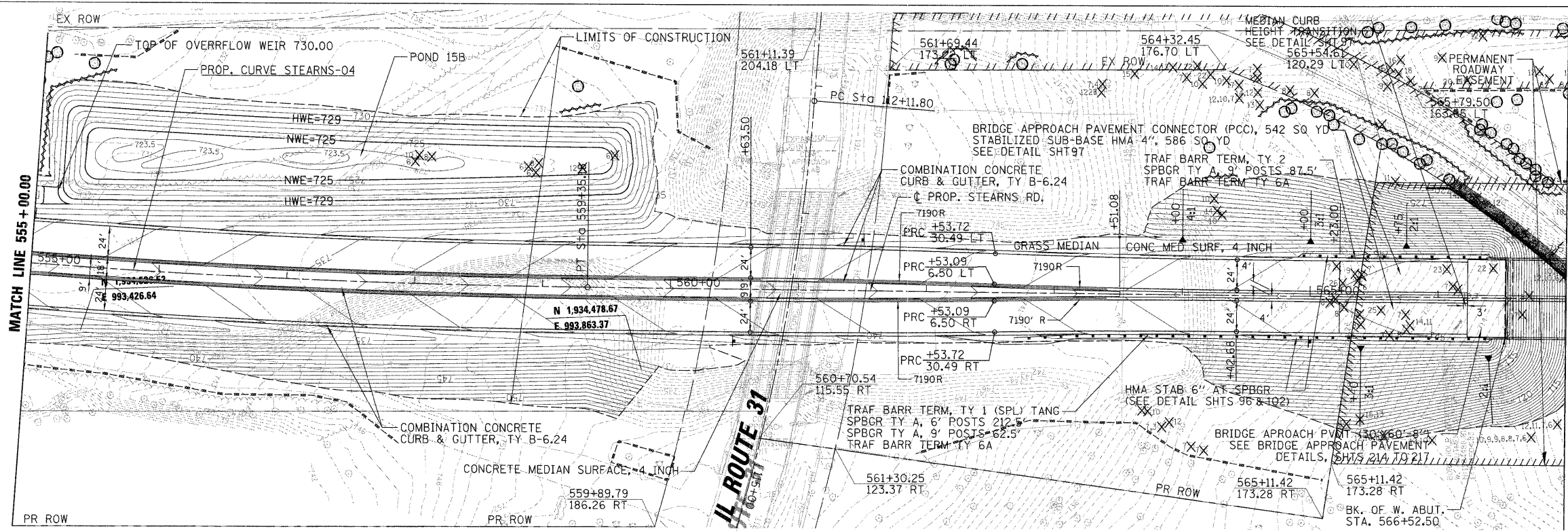


DATE	BY
DATE	BY
DATE	BY
DATE	BY
DATE	BY

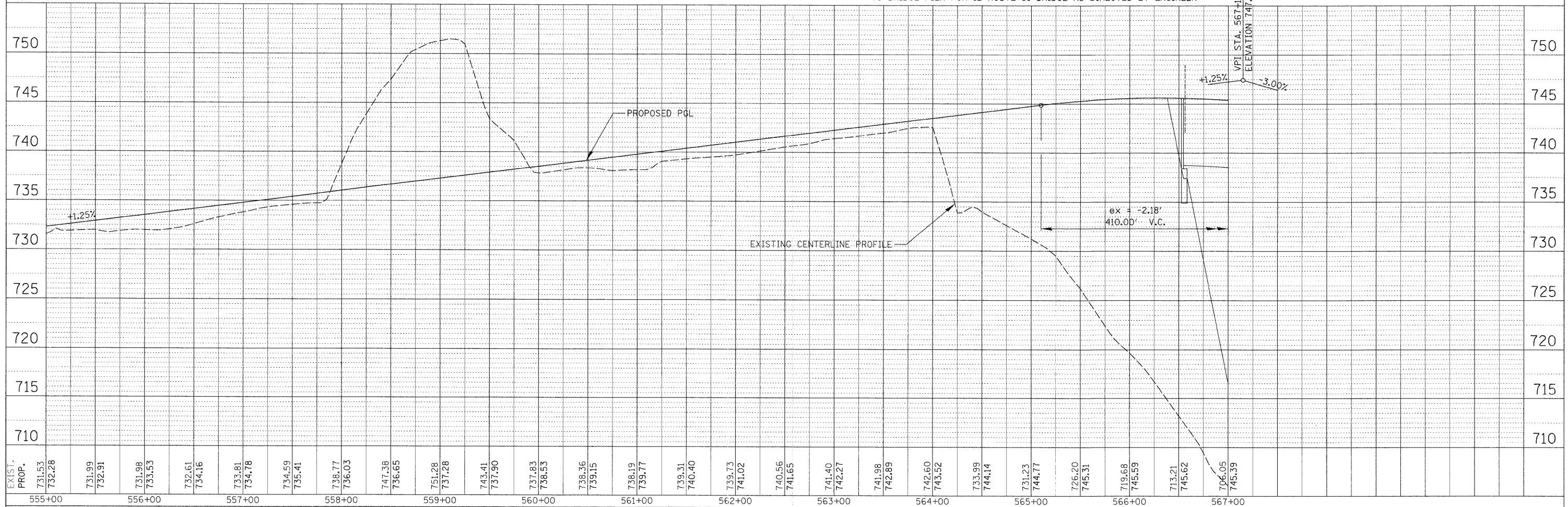
DATE	BY
DATE	BY
DATE	BY
DATE	BY
DATE	BY



- LEGEND**
- ==== COMBINATION CONCRETE CURB & GUTTER, TY B-6.24 (STANDARD GUTTER)
  - ==== COMBINATION CONCRETE CURB & GUTTER, TY B-6.24 (REVERSE PITCH GUTTER)
  - X<sub>8</sub> TREE REMOVAL, SIZE SHOWN
  - ⊙ TREE TRUNK PROTECTION
  - ~~~~~ TREE ROOT PRUNING
  - - - - - TEMPORARY FENCE

**PROP. CURVE STEARNS-04**  
 PI STA. = 555+90.82  
 $\Delta = 5^\circ 30' 25''$  (LT)  
 $D = 0^\circ 47' 56''$   
 $R = 7,171.00'$   
 $T = 344.89'$   
 $L = 689.24'$   
 $E = 8.29'$   
 $e = N.C.$   
 P.C. STA. = 552+45.94  
 P.T. STA. = 559+35.18

**NOTE:** REMOVE GRAFFITI, RESTAIN AND APPLY ANTI-GRAFFITI COATING TO BRIDGE PIER FOR IL ROUTE 31 BRIDGE AS DIRECTED BY ENGINEER



FILE NAME = RPP_070793_STEARNS_05.SHT	USER NAME = MWORMAN	DESIGNED MCW	REVISED -	<b>STATE OF ILLINOIS</b> <b>DEPARTMENT OF TRANSPORTATION</b>	<b>ROADWAY PLAN AND PROFILE - STEARNS ROAD</b>	F.A.P. R.T.E. = 361	SECTION = 06-00214-20-BR	COUNTY = KANE	TOTAL SHEETS = 320	SHEET NO. = 32	
VERT. SCALE = 1" = 5'	DRAWN PWN	REVISED -	SCALE: 1" = 50'			SHEET NO. OF SHEETS	STA. 555+00.00 TO STA. 567+00.00	CONTRACT NO. 63075			
PLTJ SCALE = 5/8"	CHECKED MCW	REVISED -	FED. ROAD DIST. NO. 1 ILLINOIS FED. AID PROJECT								
PLTJ DATE = 2/27/2009	DATE = 01/16/09	REVISED -									