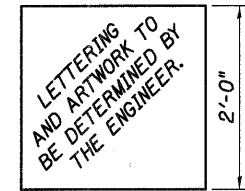


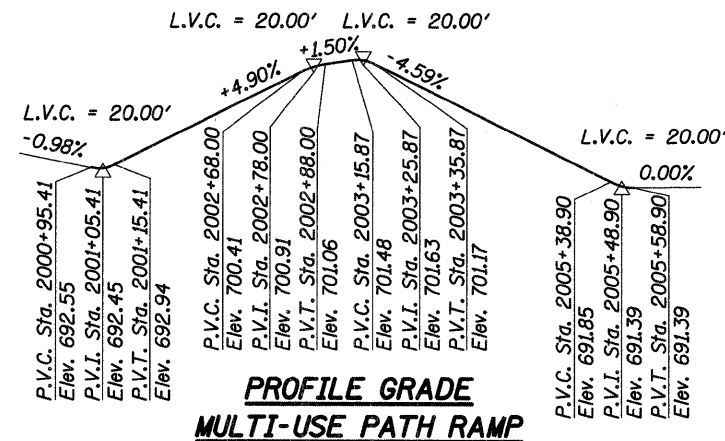
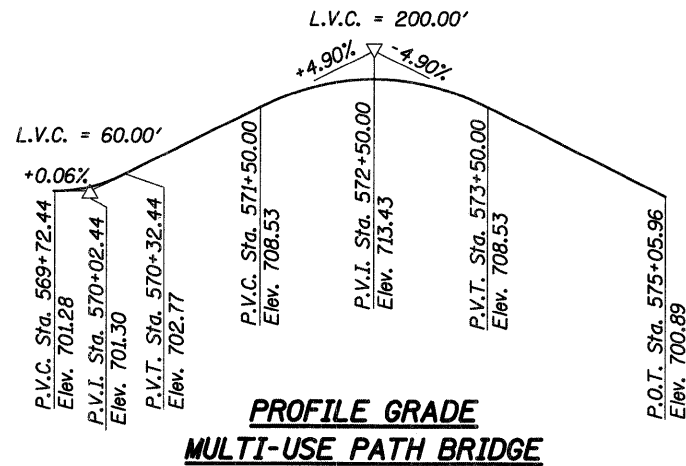
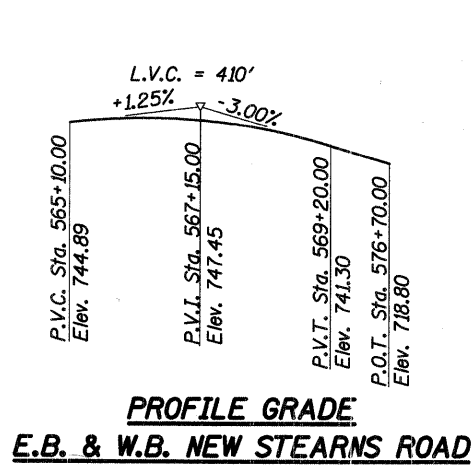
F.A.P. RTE.	SECTION	COUNTY	TOTAL SHEETS	SHEET NO.
361	06-00214-20-BR	KANE	320	107
STA. 511+80.00		TO STA. 609+14.92		
FED. ROAD DIST. NO. 7		ILLINOIS FED. AID PROJECT		
SHEET NO. S2 OF S108				

FOX RIVER  
BUILT 20XX BY  
KANE COUNTY  
SEC. 06-00214-20-BR  
F.A.P. 361 STA. 571+42.96  
STR. NO. 045-3166 LOADING HL-93

**NAME PLATE**  
See Std. 515001



**NAME PLATES (SPECIAL)**



Rail 1 Sta. 9+12.35 Elev. 711.52	Rail 2 Sta. 9+11.25 Elev. 711.69	Rail 1 Sta. 9+93.67 Elev. 715.94	Rail 2 Sta. 9+93.25 Elev. 716.10	Rail 1 Sta. 10+49.52 Elev. 718.78	Rail 2 Sta. 10+49.47 Elev. 719.05
5.44% Rail 1		5.09% Rail 1		5.45% Rail 2	
5.45% Rail 2		5.25% Rail 2			

**TOP OF RAIL PROFILES**  
**EXISTING INTERCHANGE TRACK**

Stations Measured along C Track

Rail 1 Sta. 18+53.78 Elev. 700.52	Rail 2 Sta. 18+53.73 Elev. 700.56	Rail 1 Sta. 19+68.14 Elev. 700.48	Rail 2 Sta. 19+68.21 Elev. 700.44	Rail 1 Sta. 20+74.01 Elev. 700.60	Rail 2 Sta. 20+73.53 Elev. 700.30
0.035% Rail 1		0.113% Rail 1		0.105% Rail 2	
0.105% Rail 2		0.133% Rail 2			

**TOP OF RAIL PROFILES**  
**EXISTING TROLLEY MUSEUM TRACK**

Stations Measured along C Track

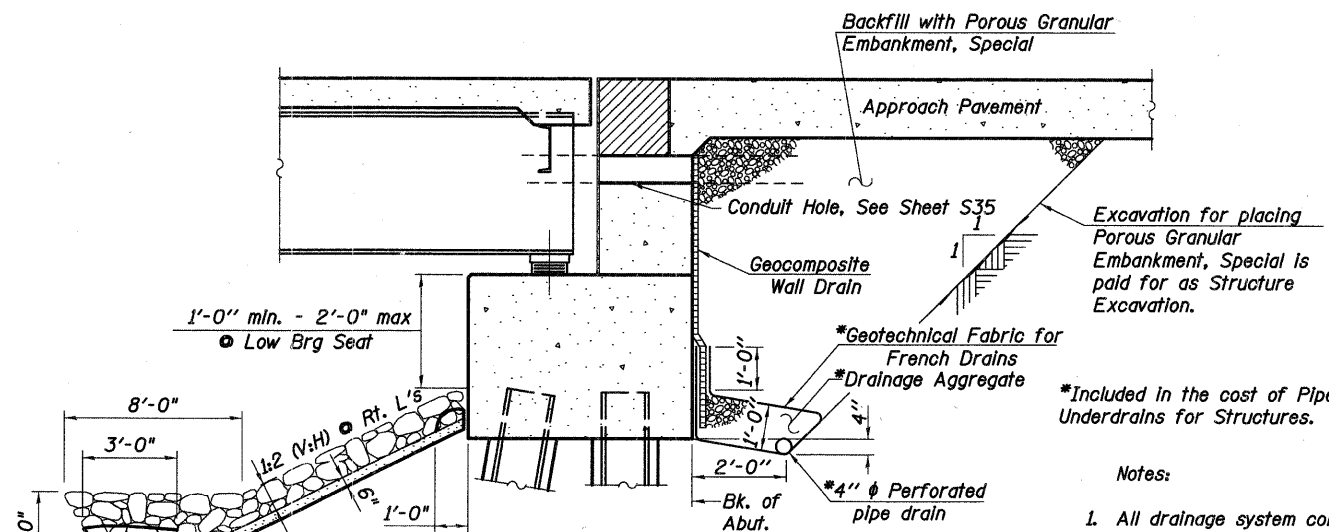
**LOADING HL-93**  
Allow 50#/sq. ft. for future wearing surface.

**DESIGN SPECIFICATIONS**  
2007 AASHTO LRFD Bridge Design Specifications with 2008 Interims

**DESIGN STRESSES**  
FIELD UNITS

$f'_c = 3,500$  psi  
 $f_y = 60,000$  psi (Reinforcement)  
 $f_y = 50,000$  psi (M270 Grade 50)

**SEISMIC DATA**  
Seismic Performance Zone (SPZ) = 1  
Design Spectral Acceleration at 1.0 sec (SD1) = 0.061g  
Design Spectral Acceleration at 0.2 sec (SDS) = 0.116g  
Soil Site Class = C



**SECTION THRU PILE SUPPORTED**  
**STUB ABUTMENT**

(Stearns Rd. & MUP Bridge E. Abut)  
(Horiz. dim. • Rt. L's)

- Notes:
- All drainage system components shall extend parallel to the abutment back wall until they intersect the wingwalls or 2'-0" from the end of the wingwalls when the wings are parallel to the abutment. The pipe shall extend under the wingwall, if necessary, until intersecting the side slopes. The pipes shall drain into concrete headwalls. (See Article 601.05 of the Standard Specifications and Highway Standard 601101).
  - 6" Bedding shall be included in the cost of Stone Rip Rap, Class A4
  - Conduit expansion fitting shall coincide with bridge expansion joint.

REVISIONS	
NAME	DATE

ILLINOIS DEPARTMENT OF TRANSPORTATION  
**GENERAL PLAN AND**  
**ELEVATION II**  
STEARNS ROAD PUBLIC  
OVER THE FOX RIVER WATERS  
STRUCTURE NUMBER 045-3166  
KANE COUNTY FAP 361 SECTION 06-00214-20-BR  
STATION 571+42.96 DESIGNED: DFM DRAWN: DFM  
DATE: JANUARY 16, 2009 CHECKED: KPZ CHECKED: KPZ

**Baker**  
Baker Engineering, Inc.