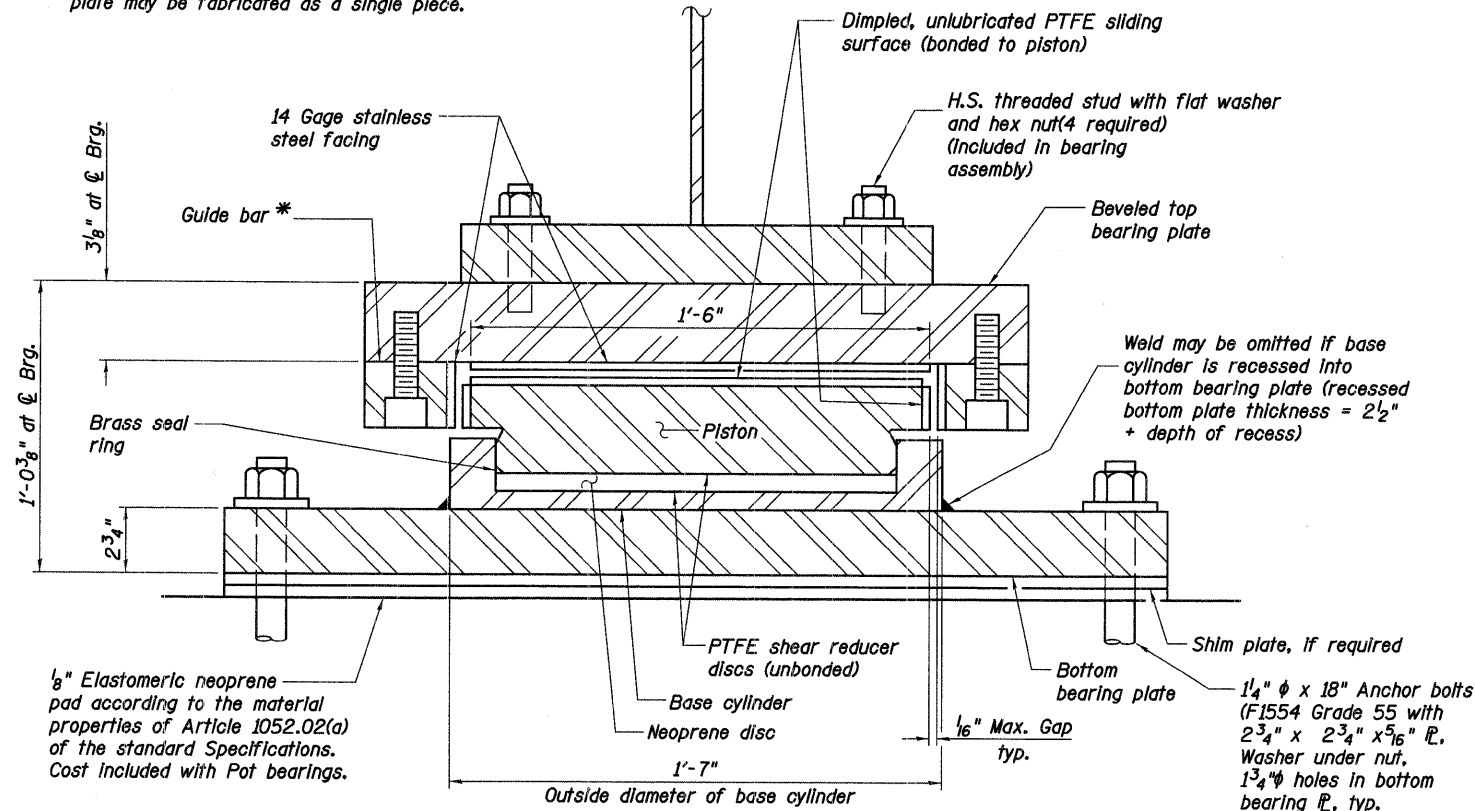


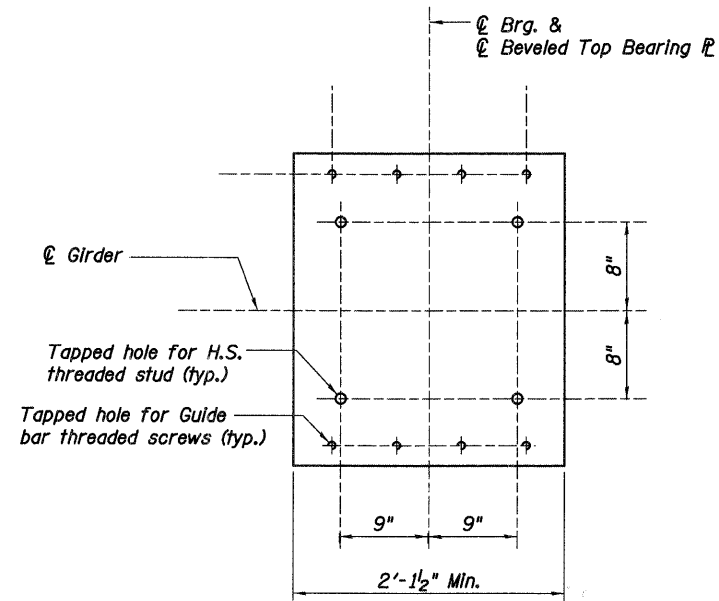
F.A.P. RTE.	SECTION	COUNTY	TOTAL SHEETS	SHEET NO.
361	06-00214-20-BR	KANE	320	138
STA. 511+80.00		TO STA. 609+14.92		
FED. ROAD DIST. NO. 7 ILLINOIS FED. AID PROJECT				
SHEET NO. S33 OF S108				

* As alternates to the bolted connection shown, the guide bars may be connected to the top bearing plate by groove welds or the guide bars and top bearing plate may be fabricated as a single piece.

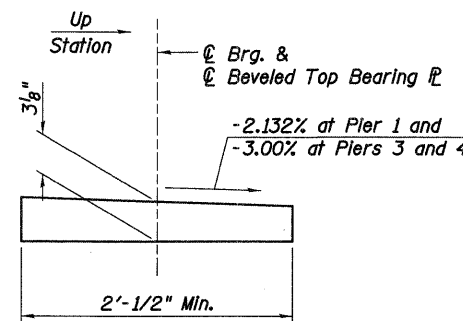


GUIDED EXPANSION POT BEARING

(Piers 1,3 and 4 - 21 required)



PLAN



BEVELED TOP BEARING P. ELEVATION

GUIDED EXPANSION POT BEARING DESIGN DATA

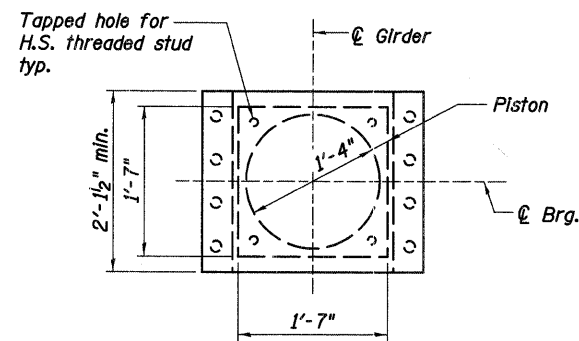
- Vertical design load (total maximum service axial Dead Load + Live Load without Impact) = 690 KIPS.
- Total required movement = 2.625" for Piers 1 and 3 = 5.25" for Pier 4

BILL OF MATERIAL

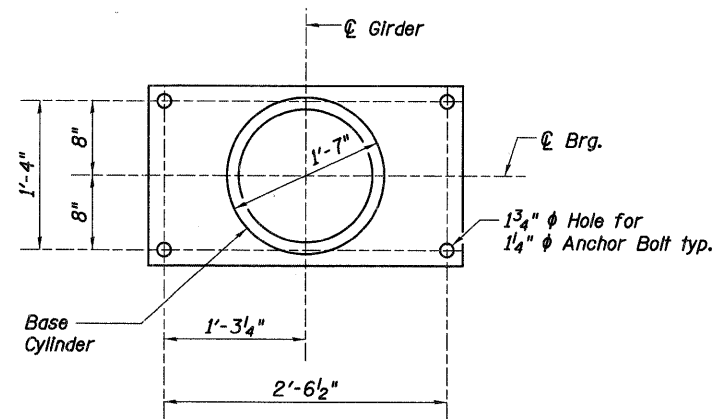
Item	Unit	Total
High Load Multi-Rotation Bearings, Guided Expansion, 700K	Each	21
Anchor Bolts, 1/4"	Each	84

NOTES:

- The structural steel plates of the Bearing Assembly shall conform to the requirements of AASHTO M 270 Grade 50.
- Two 1/8 in. adjusting shims shall be provided for each bearing in addition to all other plates or shims and placed as shown on bearing details.



BEVELED TOP BEARING P. AND PISTON PLAN



BOTTOM BEARING P. AND BASE CYLINDER PLAN

REVISIONS	
NAME	DATE

ILLINOIS DEPARTMENT OF TRANSPORTATION
BEARING DETAILS III

STEARNS ROAD OVER THE FOX RIVER PUBLIC WATERS
STRUCTURE NUMBER 045-3166
KANE COUNTY FAP 361 SECTION 06-00214-20-BR
STATION 571+42.96 DESIGNED: DAP DRAWN: SGW
DATE: JANUARY 16, 2009 CHECKED: KPZ CHECKED: KPZ

Baker
Baker Engineering, Inc.