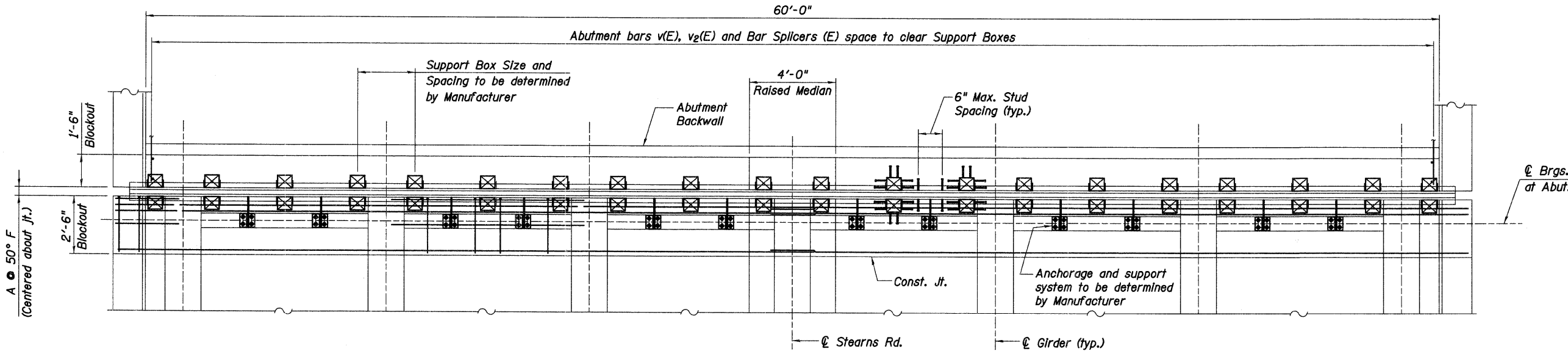
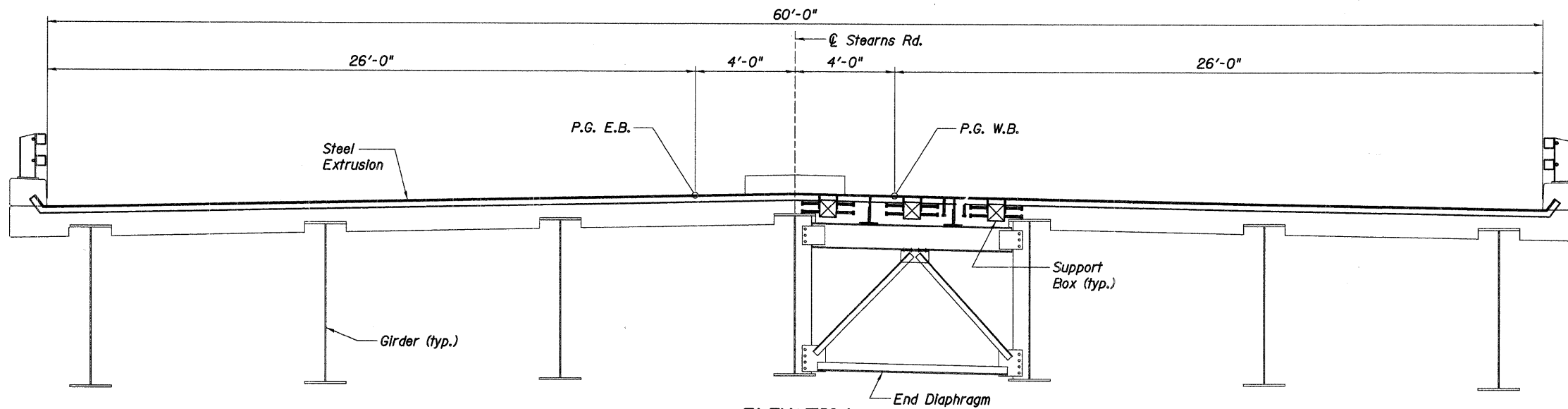


F.A.P. RTE.	SECTION	COUNTY	TOTAL SHEETS	SHEET NO.
361	06-00214-20-BR	KANE	320	139
STA. 511+80.00		TO STA. 609+14.92		
FED. ROAD DIST. NO. 7		ILLINOIS FED. AID PROJECT		
SHEET NO. S34 OF S108				



PLAN

(West Abut shown East Abut opposite hand)



ELEVATION

(West Abut shown looking west, East Abut opposite hand)

Notes:

1. Modular expansion joints shall be assembled in their final relative position with the ends in place for shop inspection and acceptance.
2. For procedure and requirements regarding modular specifications, see the Guide Bridge Special Provision, "Modular Expansion Joint".
3. See Sheets S35 and S36 of S108 for West Abutment Details and Sheets S37 and S38 of S108 for East Abutment Details.
4. See Sheet S29 of S108 for Abutment End Diaphragm Details.
5. See Sheets S14 to S21 of S108 for Deck Reinforcement Details.
6. See Sheet S21 of S108 for additional modular joint details.

REVISIONS	
NAME	DATE

ILLINOIS DEPARTMENT OF TRANSPORTATION
MODULAR JOINT DETAILS
 STEARNS ROAD OVER THE FOX RIVER PUBLIC WATERS
 STRUCTURE NUMBER 045-3166
 KANE COUNTY FAP 361 SECTION 06-00214-20-BR
 STATION 571+42.96 DESIGNED: DAP DRAWN: SGW
 DATE: JANUARY 16, 2009 CHECKED: KPZ CHECKED: KPZ

