

F.A.P. RTE.	SECTION	COUNTY	TOTAL SHEETS	SHEET NO.
361	06-00214-20-BR	KANE	320	176
STA. 511+80.00		TO STA. 609+14.92		
FED. ROAD DIST. NO. 7		ILLINOIS FED. AID PROJECT		
SHEET NO. S71 OF S108				

**MUP BRIDGE -  
WEST ABUTMENT BILL OF MATERIAL**

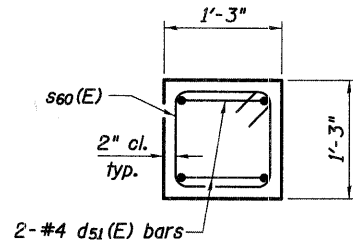
Bar	No.	Size	Length	Shape	A	B	C
$d_{51}(E)$	2	# 4	9'-4"		4'-3"	0'-10"	
$h_{54}(E)$	4	# 7	28'-6"				
$h_{55}(E)$	2	# 7	25'-4"				
$p_{53}(E)$	5	# 8	31'-8"		1'-7"	28'-6"	
$p_{54}(E)$	6	# 9	28'-7"				
$s_{53}(E)$	15	# 6	11'-3"		3'-2"	2'-2"	
$s_{54}(E)$	2	# 6	11'-0"		2'-11"	1'-11"	
$s_{55}(E)$	2	# 6	10'-9"		2'-8"	1'-8"	
$s_{56}(E)$	2	# 6	10'-6"		2'-5"	1'-5"	
$s_{57}(E)$	1	# 6	10'-3"		2'-2"	1'-2"	
$s_{58}(E)$	1	# 6	10'-0"		1'-11"	0'-11"	
$s_{59}(E)$	1	# 6	9'-9"		1'-8"	0'-8"	
$s_{60}(E)$	4	# 4	4'-5"		0'-11"	0'-11"	0'-4 1/2"
$sp_{51}(E)^*$	2	# 4	70'-6"				
$u_{52}(E)$	7	# 4	5'-9"		1'-4"	3'-1"	
$v_{52}$	32	# 8	40'-0"				
$v_{53}(E)$	32	# 10	38'-8"		37'-3"	1'-5"	1'-1 1/4"

Concrete Structures	Cu. Yd.	14
Reinforcement Bars	Pound	3,420
Reinforcement Bars, Epoxy Coated	Pound	9,030
Drilled Shaft In Soil	Cu. Yd.	35
Permanent Casing	Foot	102
Concrete Sealer	Sq. Ft.	321

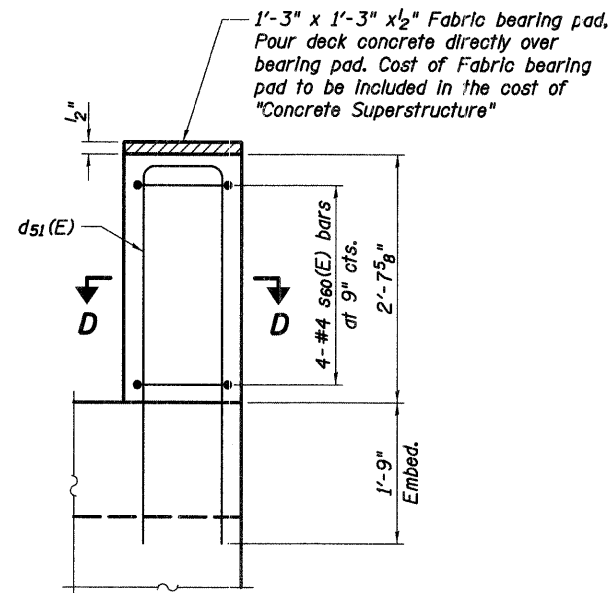
\* length is height of spiral

**MINIMUM BAR LAP**

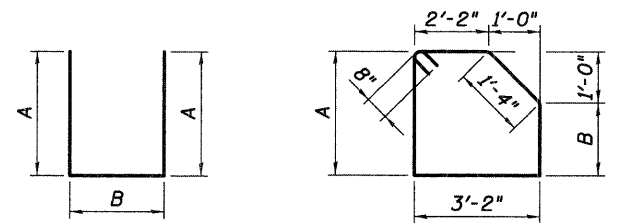
#8 = 4'-6"



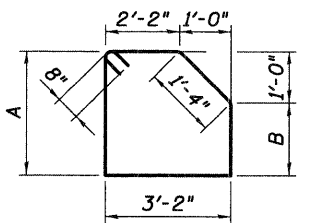
**SECTION D-D**



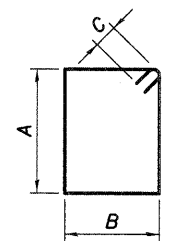
**DECK SUPPORT ELEVATION**



**BARS  $d_{51}(E)$ ,  
 $D_{53}(E)$  &  $U_{52}(E)$**



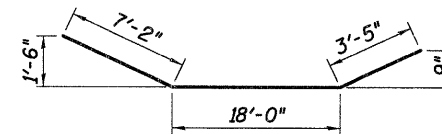
**BARS  $s_{53}(E)$  to  $s_{59}(E)$**



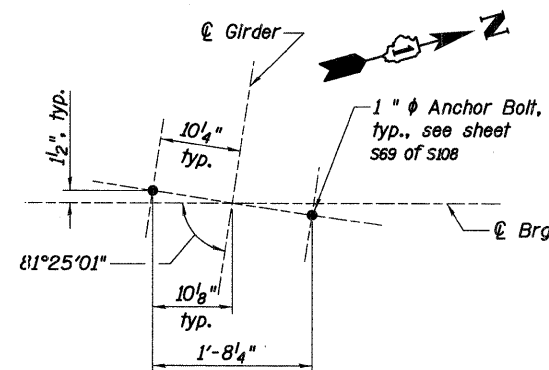
**BARS  $s_{60}(E)$**



**BAR  $v_{53}(E)$**



**BAR  $D_{54}(E)$**



**BEARING ANCHOR BOLT LAYOUT**  
(typical of girders 8 and 9)

**Baker**

Baker Engineering, Inc.

REVISIONS	
NAME	DATE

ILLINOIS DEPARTMENT OF TRANSPORTATION  
**MUP BRIDGE -  
WEST ABUTMENT II**  
MULTI-USE PATH BRIDGE OVER THE FOX RIVER  
STRUCTURE NUMBER 045-3164  
KANE COUNTY FAP 361 SECTION 06-00214-20-BR  
STATION 572+37.71  
DESIGNED: DAP DRAWN: SGW  
DATE: JANUARY 16, 2009 CHECKED: KPZ CHECKED: KPZ