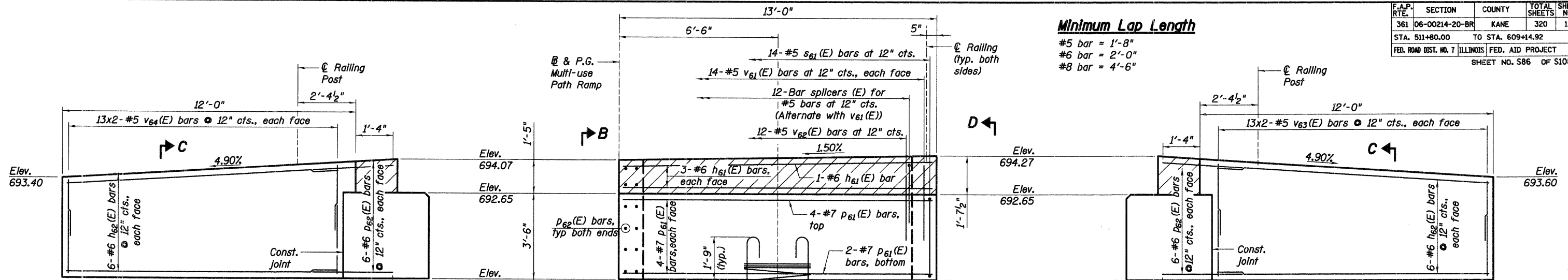


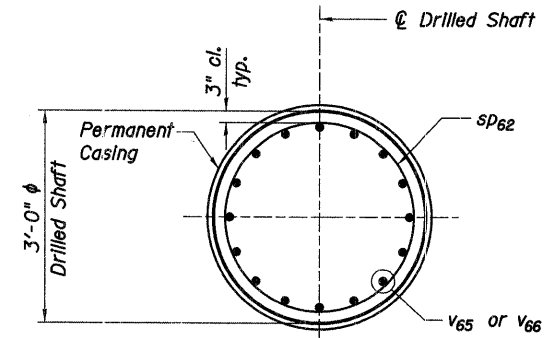
F.A.P. RTE.	SECTION	COUNTY	TOTAL SHEETS	SHEET NO.
361	06-00214-20-BR	KANE	320	191
STA. 511+80.00		TO STA. 609+14.92		
FED. ROAD DIST. NO. 7		ILLINOIS FED. AID PROJECT		
SHEET NO. S86 OF S108				



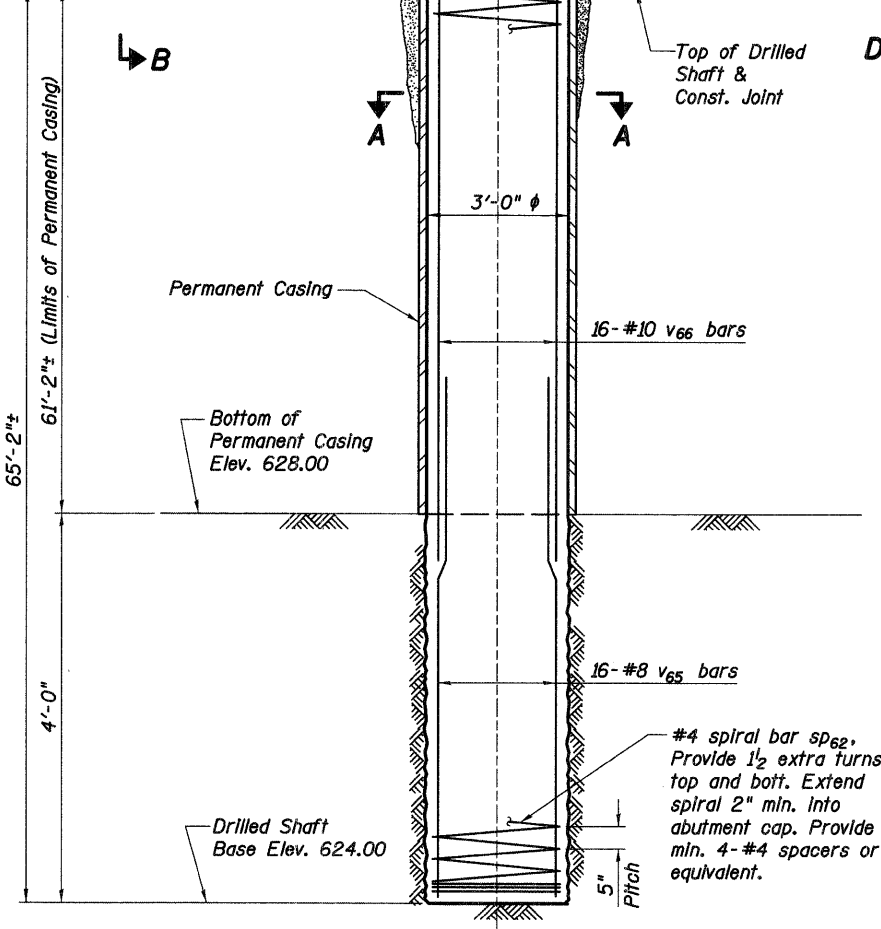
Minimum Lap Length
 #5 bar = 1'-8"
 #6 bar = 2'-0"
 #8 bar = 4'-6"

VIEW B-B

VIEW D-D



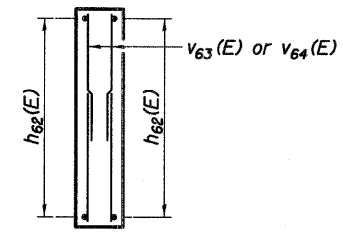
SECTION A-A



ELEVATION

Notes:

- Contractor is responsible for determining the permanent casing thickness and the actual bottom of permanent casing elevation to be used. See Article 5.16.06(d) and 1006.05(d) of the Standard Specifications.
- Pay Limits for the Permanent Casing shall be based on the minimum length shown.
- For details of Bar Splicers, see sheet S25 of S108.
- For additional abutment details see sheet S87 of S108.
- Space reinforcement to miss dowel holes.
- Hatched area to be poured after superstructure falsework has been removed. Quantity of concrete included with Concrete Superstructure.
- For railing details see sheet S81 of S108.
- Bars indicated thus 20x3-#5 etc. Indicates 20 lines of bars with 3 lengths per line.



SECTION C-C

REVISIONS	
NAME	DATE

ILLINOIS DEPARTMENT OF TRANSPORTATION
MUP RAMP-
SOUTH ABUTMENT DETAILS I
 MULTI-USE PATH BRIDGE PUBLIC
 OVER THE FOX RIVER WATERS
 STRUCTURE NUMBER 045-3164
 KANE COUNTY FAP 361 SECTION 06-00214-20-BR
 STATION 572+37.71 DESIGNED: DAP DRAWN: TMA
 DATE: JANUARY 16, 2009 CHECKED: KPZ CHECKED: KPZ



h:\13005\3.0 phase 11 deliverables\3.3 structure\drawings\final\045-3164 MUP S Abut.dgn
 1/15/2009