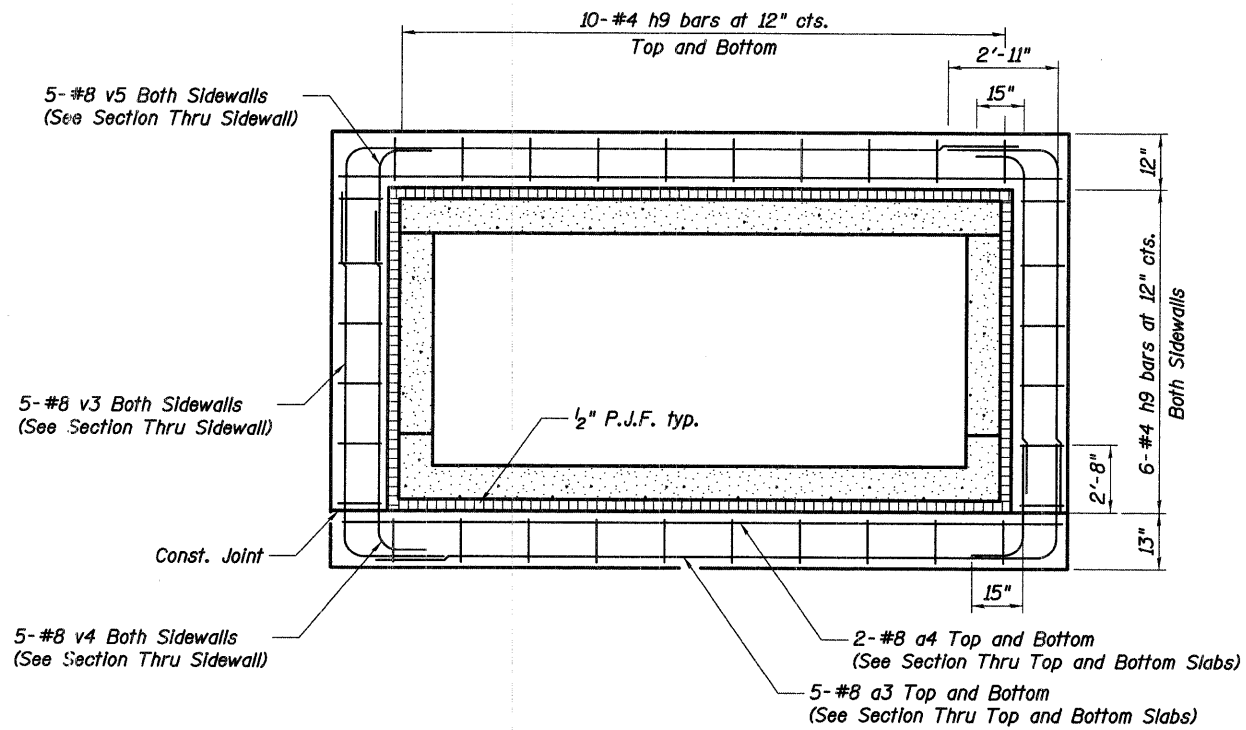
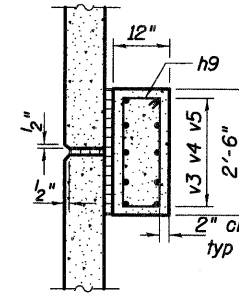


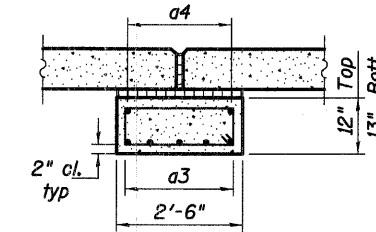
F.A.P. RTE.	SECTION	COUNTY	TOTAL SHEETS	SHEET NO.
361	06-00214-20-BR	KANE	320	219
STA. 511+80.00		TO STA. 609+14.92		
FED. ROAD DIST. NO. 7		ILLINOIS FED. AID PROJECT		



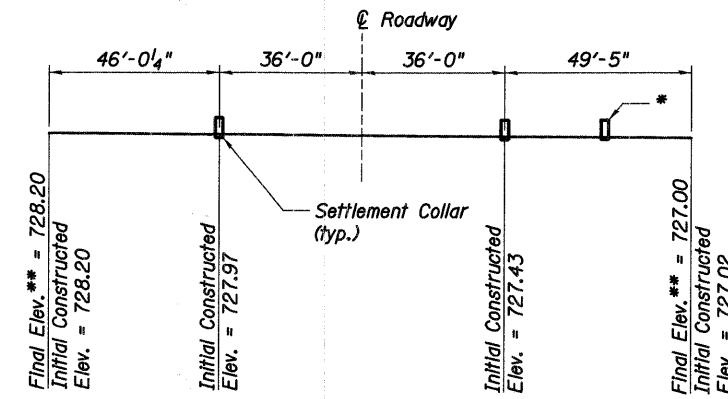
SECTION THRU BOX CULVERT AT SETTLEMENT COLLAR



SECTION THRU SIDEWALL



SECTION THRU TOP AND BOTTOM SLAB



SETTLEMENT COLLAR LOCATIONS AND AS-CONSTRUCTED FLOW LINE ELEVATIONS

Notes:
 From Station 523+00 to 534+00. Culvert construction shall not begin until a settlement waiting period is allowed for the consolidation of the existing weak soils. The roadway Geotechnical Report No. 707-11-01 from Wang Engineering dated August 22, 2008 recommends a delay period of at least 7 months between the completion of the mass grading and pavement construction. This provision shall also apply prior to beginning construction of the Box Culvert proposed at Sta. 523+75. It also provides the alternate of surcharging the embankment from Sta. 523+00 to Sta. 535+00 with an additional 5 feet for a period of 2 months for the substantial settlement to be completed. The settlement shall be monitored by a Geotechnical Engineer and the cost of surcharging the embankment shall be included with the cost of earth excavation. (See "Settlement Waiting Period" special provision)

* The Roadway Geotechnical Report No. 707-11-01 from Wang Engineering dated August 22, 2008 indicates a change in soil properties due to fill in the Lootens Quarry area. This change in properties was taken to occur at the proposed settlement collar located 38'-7" to the right of the Stearns Rd. C. An additional Settlement Collar, shall be provided if the change does not coincide with the proposed Settlement Collar. The Settlement Collar's location if required shall be directed by the engineer.

** After all long-term settlement has occurred. Culvert Invert elevations will be constructed to "Initial Constructed Elev."

P:\13005\3.0 phase II deliverables\3.3 structure\drawings\Final\Box Culvert 4x8 Collar Details.dgn 3/25/2009

Baker

Baker Engineering, Inc.

REVISIONS	
NAME	DATE

ILLINOIS DEPARTMENT OF TRANSPORTATION
4'x8' BOX CULVERT
SETTLEMENT COLLAR
 STEARNS ROAD PUBLIC WATERS
 KANE COUNTY FAP 361 SECTION 06-00214-20-BR
 STATION 523+75.00 DESIGNED: DFM DRAWN: DFM
 DATE: JANUARY 16, 2009 CHECKED: CHECKED: