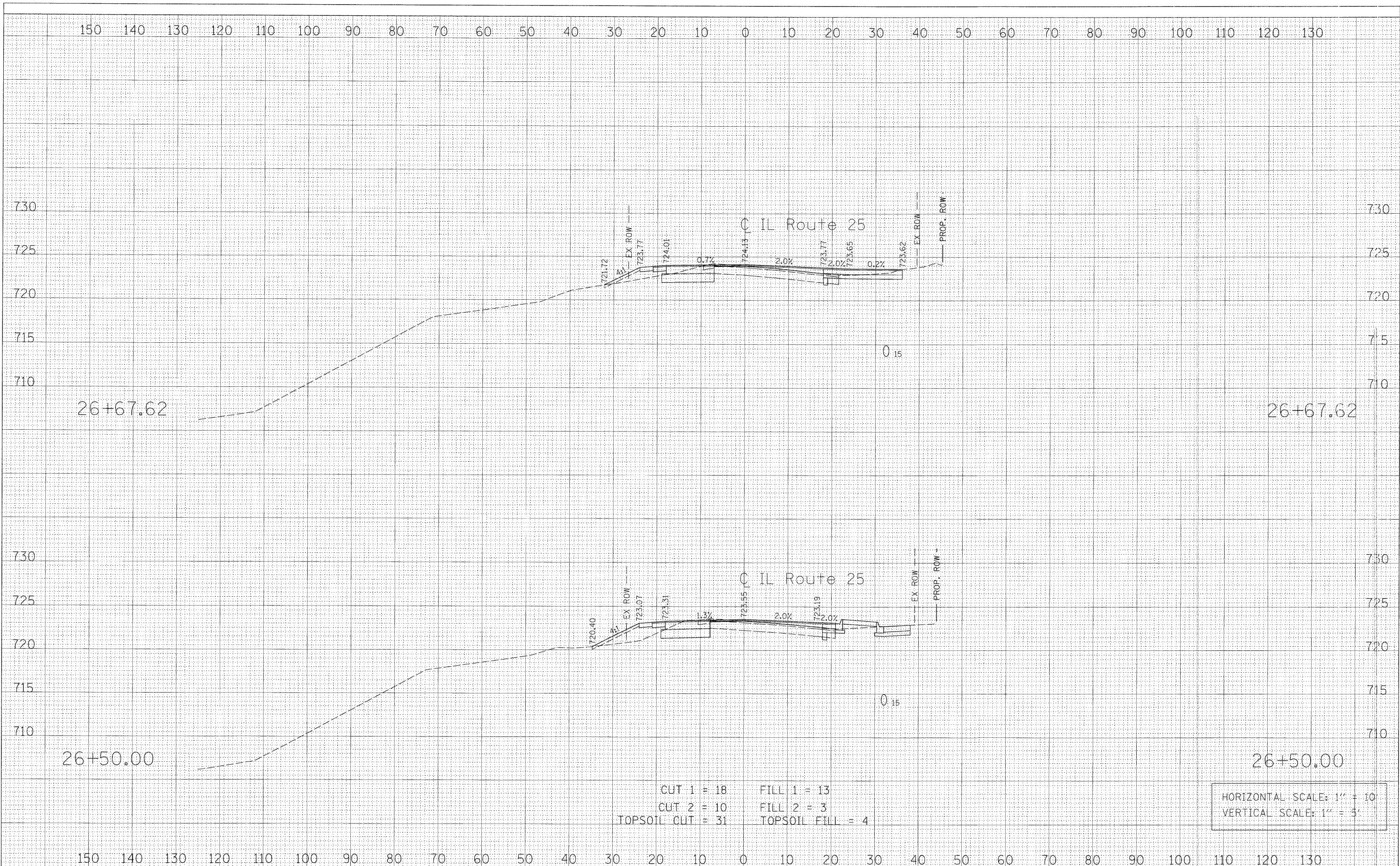


DATE	
BY	
FINA SURVEY	SURVEYED
NOTE BOOK	PLOTTED
NO.	AREAS CHECKED

DATE	
BY	
ORIGINAL SURVEY	SURVEYED
NOTE BOOK	PLOTTED
NO.	AREAS CHECKED



CUT 1 = 18 FILL 1 = 13
 CUT 2 = 10 FILL 2 = 3
 TOPSOIL CUT = 31 TOPSOIL FILL = 4

HORIZONTAL SCALE: 1" = 10'
 VERTICAL SCALE: 1" = 5'

FILE NAME = PR_XS_IL25.SHT	USER NAME = GTINE	DESIGNED - GS	REVISED -	STATE OF ILLINOIS DEPARTMENT OF TRANSPORTATION	IL ROUTE 25 CROSS SECTIONS			F.A.P. RTE. 361	SECTION 06-00214-20-BR	COUNTY Kane	TOTAL SHEETS 320	SHEET NO. 305	
	PLOT SCALE = 10"	DRAWN - GS	REVISED -		SCALE:	SHEET NO.	OF	SHEETS	STA. 26+50.00	TO STA. 26+67.620	FED. ROAD DIST. NO.	ILLINOIS FED. AID PROJECT	
	PLOT DATE = 1/14/2009	CHECKED - SE	REVISED -										
		DATE - 01/16/09	REVISED -										

Sta. 26+50.00 to Sta. 26+67.620