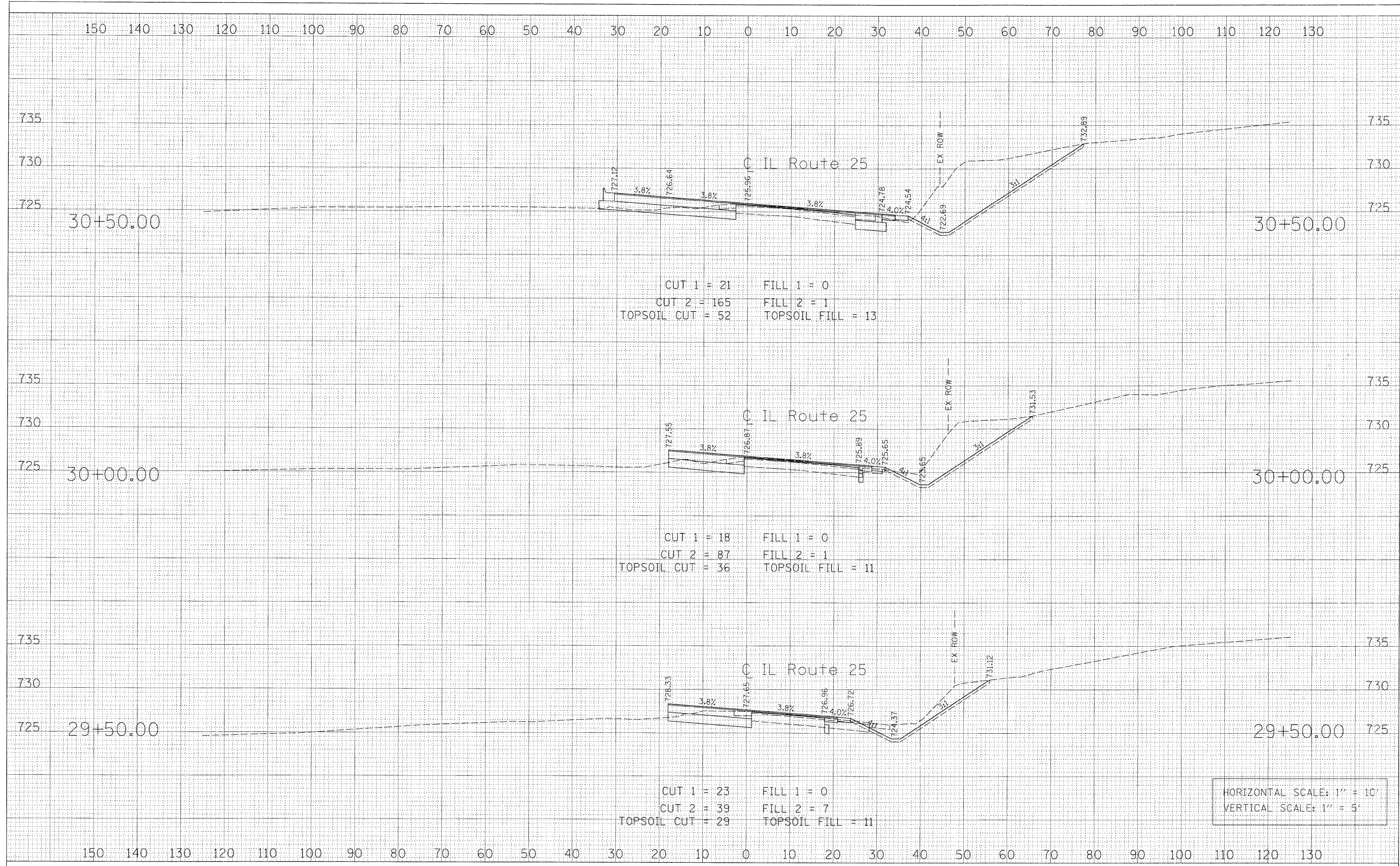


FINAL	SURVEYED	BY	DATE
SURVEY	PLOTTED		
NOTE BOOK	TEMPLATE		
NO.	AREAS CHECKED		

ORIGINAL	SURVEYED	BY	DATE
SURVEY	PLOTTED		
NOTE BOOK	TEMPLATE		
NO.	AREAS CHECKED		



HORIZONTAL SCALE: 1" = 10'
 VERTICAL SCALE: 1" = 5'

FILE NAME = PR_XS_IL25.SHT	USER NAME = GTINE	DESIGNED - GS	REVISED -	STATE OF ILLINOIS DEPARTMENT OF TRANSPORTATION	IL ROUTE 25 CROSS SECTIONS			F.A.P. RTE. 361	SECTION 06-00214-20-BR	COUNTY Kane	TOTAL SHEETS 320	SHEET NO. 308
	PLOT SCALE = 10"	DRAWN - GS	REVISED -		SCALE:	SHEET NO.	OF SHEETS	STA. 29+50.00	TO STA. 30+50.00	CONTRACT NO.		
	PLOT DATE = 1/14/2009	CHECKED - SE	REVISED -		FED. ROAD DIST. NO. ILLINOIS FED. AID PROJECT							
		DATE - 01/16/09	REVISED -		Sta. 29+50.00 to Sta. 30+50.00							