

INDEX OF SHEETS
SEE SHEET NO. 2

STATE STANDARDS
SEE SHEET NO. 2

DESIGN DESIGNATION - HARLEM AVENUE-ARTERIAL
ADT: SOUTHWEST HY TO I-294 - 44500 (2007)
I-294 TO 95TH STREET - 44100 (2007)
95TH TO 79TH STREET - 43000 (2007)
79TH TO 71ST STREET - 44100 (2007)
71TH TO 65TH STREET - 51800 (2007)
100% OF DESIGN TRAFFIC IN DESIGN LANE
POSTED SPEED LIMIT - 40MPH

STATE OF ILLINOIS

DEPARTMENT OF TRANSPORTATION

DIVISION OF HIGHWAYS

PLANS FOR PROPOSED FEDERAL AID HIGHWAY

SCALES
PLAN - 1"=50'
PROFILE HORIZ. - 1"=50'
PROFILE VERT. - 1"=5'
CROSS SECTIONS - 1"=10'

FAP 348 (HARLEM AVENUE)
FROM CAL SAG CHANNEL TO 65TH STREET
BEAUTIFICATION-STREETSCAPING

SECTION: 07-00055-00-LS

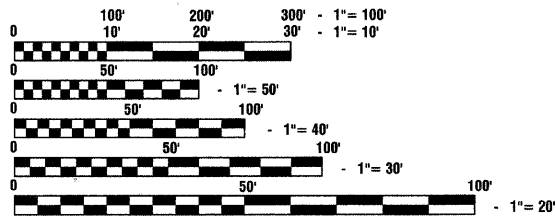
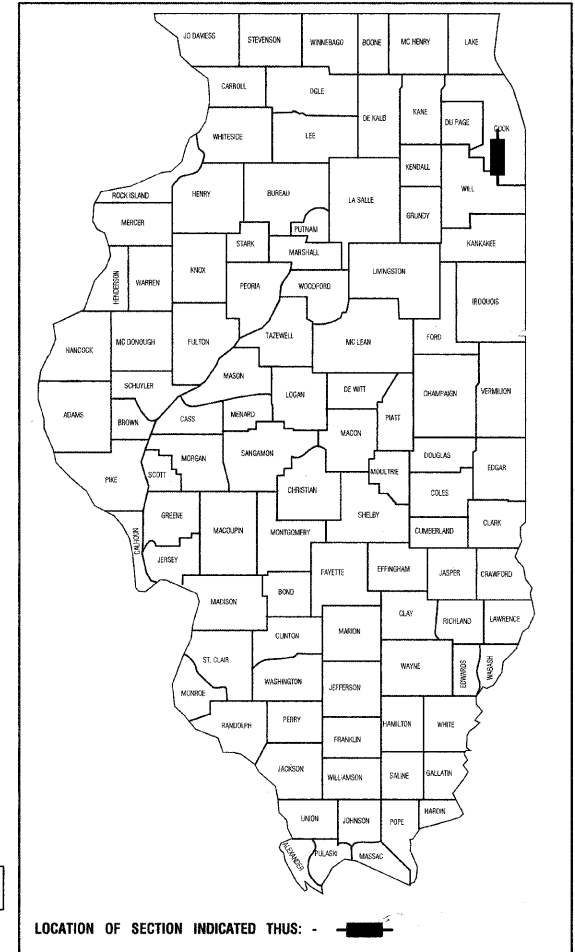
PROJECT: HPP-3462(002)

JOB NO: C-91-060-08

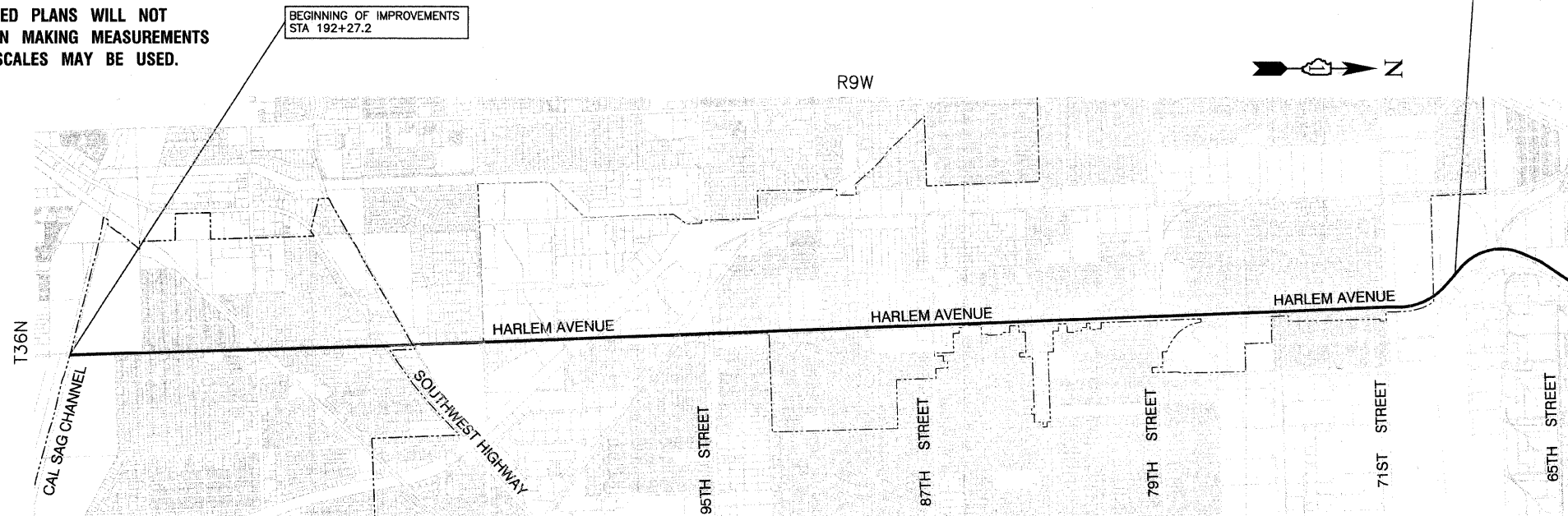
MUNICIPALITIES of WORTH, PALOS HILLS, CHICAGO RIDGE,
OAK LAWN, BRIDGEVIEW, BURBANK AND BEDFORD PARK
COOK COUNTY

F. A. P. NO.	SECTION	COUNTY	TOTAL SHEETS	SHEET NO.
348	07-00055-00-LS	COOK	41	1
STA.		TO STA.		
FED. ROAD DIST. NO.	ALIGNED	FED. AID PROJECT		

CONTRACT #63106



FULL SIZE PLANS HAVE BEEN PREPARED USING STANDARD ENGINEERING SCALES, REDUCED SIZED PLANS WILL NOT CONFORM TO STANDARD SCALES, IN MAKING MEASUREMENTS ON REDUCED PLANS, THE ABOVE SCALES MAY BE USED.



BEGINNING OF IMPROVEMENTS
STA 192+27.2

END OF IMPROVEMENTS
STA 547+50

LOCATION MAP

NO SCALE

GROSS AND NET LENGTH=35,522.8 FEET=6.73 MILES

J. U. L. I. E.
JOINT UTILITY LOCATION INFORMATION FOR EXCAVATION
1-800-892-0123 or 811

CONTRACT NO. 63106

STATE OF ILLINOIS DEPARTMENT OF TRANSPORTATION
DIVISION OF HIGHWAYS

Approved: *Stella*
11/16/09
Mayor, Village of Bridgeview

Passed: *February 20, 2009*
Christoph
District 1 Engineer of Local Roads & Streets

Released for Bid Based on Limited Review
Diana M. D'Korff
Deputy Director of Highways, Region 1 Engineer

PRINTED BY THE AUTHORITY OF
THE STATE OF ILLINOIS

PREPARED BY OR UNDER THE
DIRECT SUPERVISION OF:

[Signature]
12/22/09



LICENSE EXPIRES: 11/30/09

FIELD ENGINEER-MELCHOR MANGOBA (847) 705-4408
CONSULTANTS: ROBINSON ENGINEERING, LTD. 708-331-6700
CONTACT ENGINEER: RON WIEDEMAN