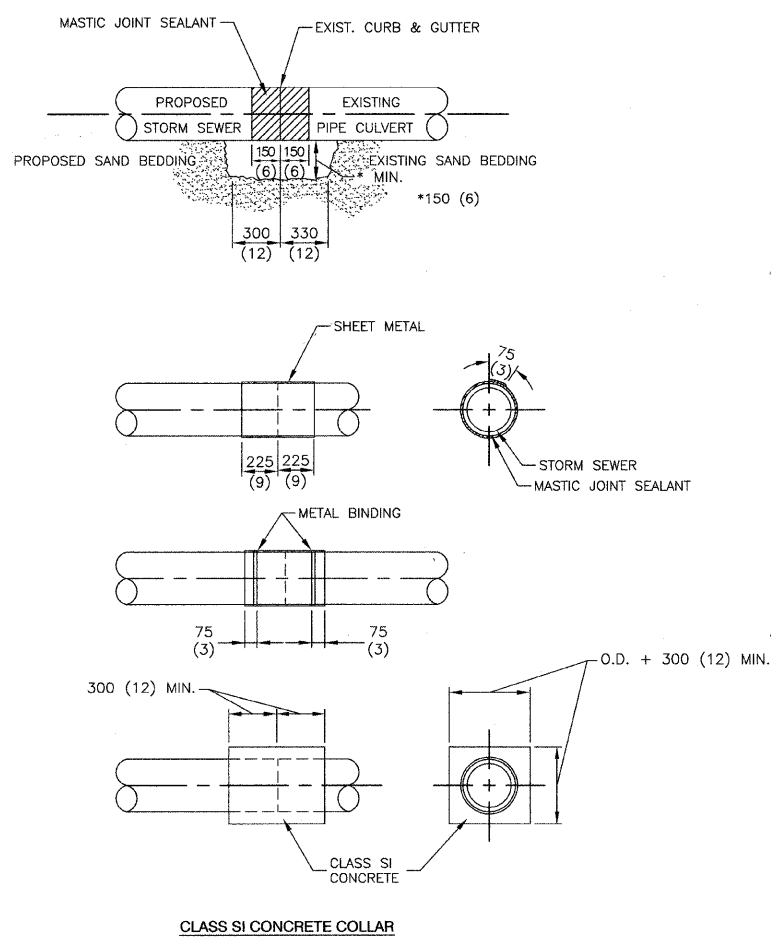


F. A. U. NO.	SECTION	COUNTY	TOTAL SHEETS	SHEET NO.
348	07-00055-00-LS	COOK	41	41
STA.		TO STA.		
FED. ROAD DIST. NO.	ILLINOIS	FED. AID PROJECT		

CONTRACT #63106

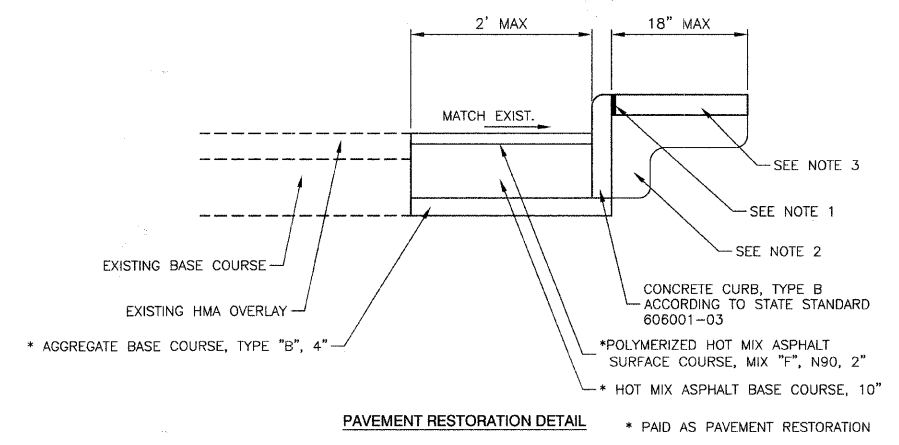
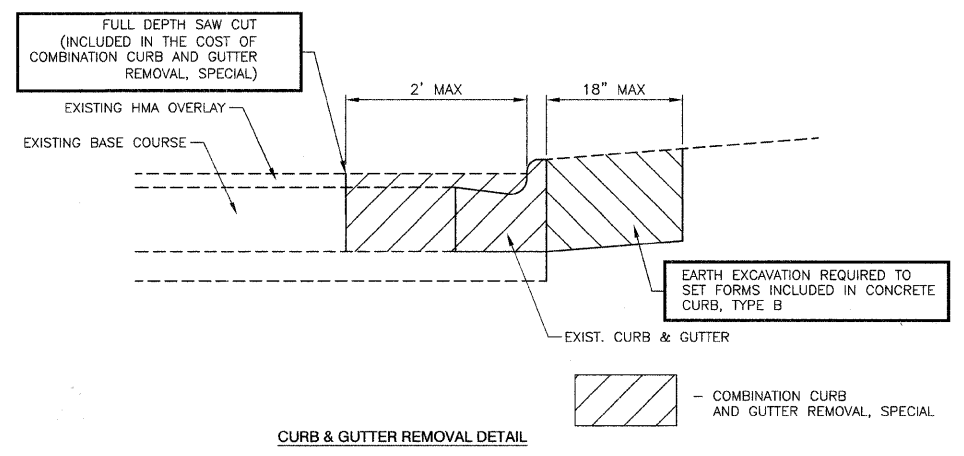


- CONSTRUCTION SEQUENCE**
- CUT THE EXISTING END OF THE PIPE SO AS TO PRESENT A FLUSH BUTT JOINT. BRUSH AND CLEAN ALL PIPES.
 - APPLY THE MASTIC JOINT SEALANT TO THE FIRST 150 (6) OF EACH PIPE.
 - BUTT THE PIPES TOGETHER LEAVING A MINIMUM OF 300 X 150 (12 X 6) DEEP EXCAVATING UNDER AND AROUND EACH PIPE END.
 - CUT A PIECE OF SHEET METAL GAGE NO. 19 1.1 (0.048) 450 (18) WIDE BY THE OUTSIDE CIRCUMFERENCE OF THE PIPE PLUS 75 (3) LONG.
 - WRAP THE SHEET METAL AROUND THE PIPES. 225 (9) ON EACH SIDE OF THE JOINT. STARTING AT THE TOP OF THE PIPE.
 - LAP THE SHEET METAL AT LEAST 75 (3) AT THE TOP OF THE PIPE AND PLACE THE MASTIC JOINT SEALANT BETWEEN THE LAP.
 - PLACE TWO METAL BANDS AROUND THE SHEET METAL AND TIGHTEN.
 - WIPE OFF ANY EXCESS MASTIC JOINT SEALANT THAT OZZES OUT FROM BETWEEN THE SHEET METAL AND THE PIPES.
 - PLACE CLASS SI CONCRETE AROUND THE JOINT.

GENERAL NOTES:

CARE MUST BE TAKEN TO PREVENT DEBRIS FROM ENTERING THE SEWER. ALL DEBRIS WHICH ENTERS THE SEWER MUST BE REMOVED. THE SEWER MUST BE LEFT CLEAN AND UNDISTURBED UPON COMPLETION OF THE CONTRACT.

CARE MUST TAKEN TO PREVENT ANY PART OF THE NEW PIPE CONNECTION FROM PROJECTING INTO THE EXISTING SEWER.



- NOTES:**
- PROPOSED 3/4" PREFORMED EXPANSION JOINT AT CONCRETE SIDEWALKS, DRIVEWAYS (INCLUDED IN THE COST OF CONCRETE CURB, TYPE B).
 - SUITABLE BACKFILL MATERIAL (INCLUDED IN THE COST OF CONCRETE CURB, TYPE B).
 - SIDEWALK, DRIVEWAY PAVEMENT SHALL BE SIMILAR TO THE MATERIAL BEING REMOVED AND WILL BE PAID FOR SEPERATLY.

SALT TOLERANT SOD AND TOP SOIL, 4" RESTORATION WILL NOT BE PAID FOR SEPERATLY, BUT SHALL BE INCLUDED IN CONCRETE CURB, TYPE B.

REVISIONS	
NAME	DATE

ILLINOIS DEPARTMENT OF TRANSPORTATION

**FAP 348 (HARLEM AVENUE)
CONSTRUCTION DETAILS**

SCALE: VERT. NA
HORIZ. NA
DATE: 12-19-08

DRAWN BY: LTL
CHECKED BY: RJW/PKB

ROBINSON ENGINEERING, LTD.
17000 SOUTH PARK AVENUE SOUTH HOLLAND, ILLINOIS 60473
(708) 381-6700 FAX (708) 381-8808
ILLINOIS DESIGN FIRM REGISTRATION NO. 184002158