

SUMMARY OF QUANTITIES			TOTAL QUANTITY	CONSTRUCTION TYPE CODE	
CODE NO.	DESCRIPTION	UNIT		ROADWAY 1000-2A	BRIDGE X081-2A
20100110	TREE REMOVAL (6 TO 15 UNITS DIAMETER)	UNIT	690	690	
20100210	TREE REMOVAL (OVER 15 UNITS DIAMETER)	UNIT	430	430	
20101100	TREE TRUNK PROTECTION	EACH	15	15	
20200100	EARTH EXCAVATION	CU YD	910	910	
20201200	REMOVAL AND DISPOSAL OF UNSUITABLE MATERIAL	CU YD	820	820	
20400800	FURNISHED EXCAVATION	CU YD	2,500	2,500	
20700400	POROUS GRANULAR EMBANKMENT, SPECIAL	CU YD	210		210
20800150	TRENCH BACKFILL	CU YD	20	20	
21101625	TOPSOIL FURNISH AND PLACE, 6"	SQ YD	5,800	5,800	
25000210	SEEDING, CLASS 2A	ACRE	0.8	0.8	
25000310	SEEDING, CLASS 4	ACRE	0.5	0.5	
25000400	NITROGEN FERTILIZER NUTRIENT	POUND	110	110	
25000500	PHOSPHORUS FERTILIZER NUTRIENT	POUND	110	110	
25000600	POTASSIUM FERTILIZER NUTRIENT	POUND	110	110	
25100630	EROSION CONTROL BLANKET	SQ YD	5,800	5,800	
28000255	TEMPORARY EROSION CONTROL SEEDING	ACRE	2	2	
28000300	TEMPORARY DITCH CHECKS	EACH	16	16	
28000400	PERIMETER EROSION BARRIER	FOOT	2,100	2,100	
28000500	INLET AND PIPE PROTECTION	EACH	2	2	
28000510	INLET FILTERS	EACH	2	2	
28100101	STONE RIPRAP, CLASS A1	SQ YD	15	15	
28100105	STONE RIPRAP, CLASS A3	SQ YD	10	10	
28100107	STONE RIPRAP, CLASS A4	SQ YD	15	15	
28100705	STONE DUMPED RIPRAP, CLASS A3	SQ YD	95		95
28200200	FILTER FABRIC	SQ YD	120	25	95
35102000	AGGREGATE BASE COURSE, TYPE B 8"	SQ YD	50	50	
35501308	HOT-MIX ASPHALT BASE COURSE, 6"	SQ YD	130	130	
40600200	BITUMINOUS MATERIALS (PRIME COAT)	TON	2	2	
40600895	CONSTRUCTING TEST STRIP	EACH	1	1	
40603310	HOT-MIX ASPHALT SURFACE COURSE, MIX "C", N50	TON	20	20	
40701801	HOT-MIX ASPHALT PAVEMENT (FULL-DEPTH), 6"	SQ YD	1,150	1,150	
42001165	BRIDGE APPROACH PAVEMENT	SQ YD	275	275	
42001430	BRIDGE APPROACH PAVEMENT CONNECTOR (FLEXIBLE)	SQ YD	760	760	
44000100	PAVEMENT REMOVAL	SQ YD	1,800	1,800	
44000200	DRIVEWAY PAVEMENT REMOVAL	SQ YD	160	160	
44000300	CURB REMOVAL	FOOT	70	70	
44000700	APPROACH SLAB REMOVAL	SQ YD	100	100	
48203021	HOT-MIX ASPHALT SHOULDERS, 6"	SQ YD	1,100	1,100	
50101500	REMOVAL OF EXISTING SUPERSTRUCTURES	EACH	1		1
50102400	CONCRETE REMOVAL	CU YD	14.0		14.0
50105220	PIPE CULVERT REMOVAL	FOOT	50	50	
50157307	PROTECTIVE SHIELD, SPECIAL	L SUM	1		1
50200100	STRUCTURE EXCAVATION	CU YD	364		364
50300225	CONCRETE STRUCTURES	CU YD	43.4		43.4
50300254	RUBBED FINISH	SQ FT	1,023		1,023
50300255	CONCRETE SUPERSTRUCTURE	CU YD	147.4		147.4
50300260	BRIDGE DECK GROOVING	SQ YD	394		394

\* DENOTES SPECIALTY ITEM  
 Δ Y080

SUMMARY OF QUANTITIES			TOTAL QUANTITY	CONSTRUCTION TYPE CODE	
CODE NO.	DESCRIPTION	UNIT		ROADWAY 1000-2A	BRIDGE X081-2A
50300300	PROTECTIVE COAT	SQ YD	498		498
50401105	FURNISHING AND ERECTING PRECAST PRESTRESSED CONCRETE I-BEAMS, 54 IN.	FOOT	548.5		548.5
50800205	REINFORCEMENT BARS, EPOXY COATED	POUND	36,600		36,600
50800515	BAR SPLICERS	EACH	80		80
51200959	FURNISHING METAL SHELL PILES 14" X 0.312"	FOOT	810		810
51202305	DRIVING PILES	FOOT	810		810
51203200	TEST PILE METAL SHELLS	EACH	2		2
51204650	PILE SHOES	EACH	20		20
51500100	NAME PLATES	EACH	1		1
54213657	PRECAST REINFORCED CONCRETE FLARED END SECTIONS 12"	EACH	2	2	
54213660	PRECAST REINFORCED CONCRETE FLARED END SECTIONS 15"	EACH	6	6	
542A0220	PIPE CULVERTS, CLASS A, TYPE 1 15"	FOOT	100	100	
55019500	STORM SEWERS, TYPE 1, REINFORCED CONCRETE CULVERT, STORM DRAIN, AND SEWER PIPE, CLASS IV 12"	FOOT	15	15	
59100100	GEOCOMPOSITE WALL DRAIN	SQ YD	127		127
60109580	PIPE UNDERDRAINS FOR STRUCTURES 4"	FOOT	170		170
60208210	CATCH BASINS, TYPE C, TYPE 20 FRAME AND GRATE	EACH	2	2	
60600095	CLASS SI CONCRETE (OUTLET)	CU YD	2	2	
60600605	CONCRETE CURB, TYPE B	FOOT	20	20	
63000001	STEEL PLATE BEAM GUARD RAIL, TYPE A, 6 FOOT POSTS	FOOT	237.5	237.5	
63100045	TRAFFIC BARRIER TERMINAL, TYPE 2	EACH	1	1	
63100085	TRAFFIC BARRIER TERMINAL, TYPE 6	EACH	4	4	
63100167	TRAFFIC BARRIER TERMINAL, TYPE 1 (SPECIAL) TANGENT	EACH	3	3	
63200310	GUARDRAIL REMOVAL	FOOT	198	198	
66101150	HOT-MIX ASPHALT SHOULDER CURB	FOOT	20	20	
67000400	ENGINEER'S FIELD OFFICE, TYPE A	CAL MO	6	6	
67100100	MOBILIZATION	L SUM	1	1	
70102550	TRAFFIC CONTROL AND PROTECTION FOR TEMPORARY DETOUR	EACH	1	1	
70106800	CHANGEABLE MESSAGE SIGN	CAL MO	12	12	
72000100	SIGN PANEL - TYPE 1	SQ FT	5	5	
72400100	REMOVE SIGN PANEL ASSEMBLY - TYPE A	EACH	7	7	
72900100	METAL POST - TYPE A	FOOT	15	15	
78000200	THERMOPLASTIC PAVEMENT MARKING - LINE 4"	FOOT	1,725	1,725	
78008210	POLYUREA PAVEMENT MARKING TYPE I - LINE 4"	FOOT	175	175	
78200410	GUARDRAIL MARKERS, TYPE A	EACH	10	10	
78201000	TERMINAL MARKER - DIRECT APPLIED	EACH	3	3	
A2002920	TREE, CELTIS OCCIDENTALIS (COMMON HACKBERRY), 2-1/2" CALIPER, BALLED AND BURLAPPED	EACH	16	16	
A2005020	TREE, GYMNOCLADUS DIOICUS (KENTUCKY COFFEETREE), 2-1/2" CALIPER, BALLED AND BURLAPPED	EACH	16	16	
C2004224	SHRUB, LIGUSTRUM OBTUSIFOLIUM REGELIANUM (REGEL PRIVET), 2' HEIGHT, BALLED AND BURLAPPED	EACH	22	22	
X0322256	TEMPORARY INFORMATION SIGNING	SQ FT	52	52	
X0325862	CONCRETE BRIDGE RAILING	FOOT	186		186
XX000714	FENCE TO BE REMOVED AND RE-ERECTED	FOOT	560	560	
XX000856	MAILBOX REMOVAL AND RELOCATION	EACH	2	2	
Z0001050	AGGREGATE SUBGRADE, 12"	SQ YD	2,000	2,000	
Z0013798	CONSTRUCTION LAYOUT	L SUM	1	1	
Z0064800	SELECTIVE CLEARING	UNIT	1	1	
Z0076600	TRAINEES	HOUR	500	500	

FILE NAME = N:\PROJ\3335\Design\ProposedPlan\3335-04-500.dgn



**Ciorba Group, Inc.**  
 CONSULTING ENGINEERS  
 5507 North Cumberland Avenue, Suite 402  
 Chicago, Illinois 60656  
 Tel. 773.775.4009 Fax 773.775.4014

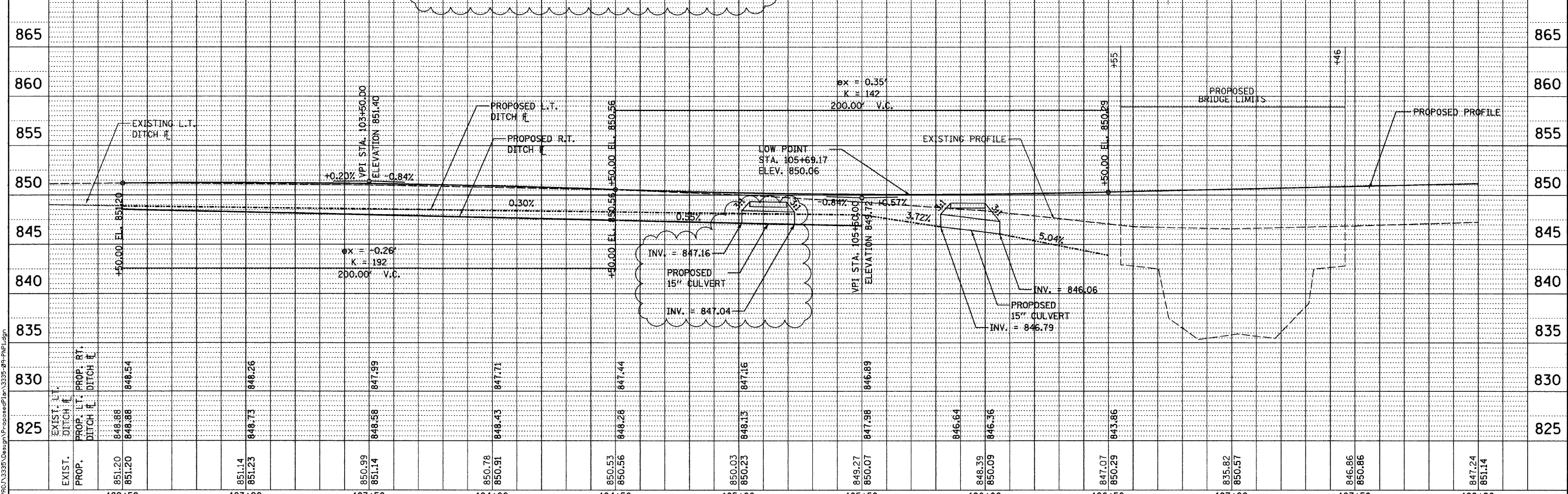
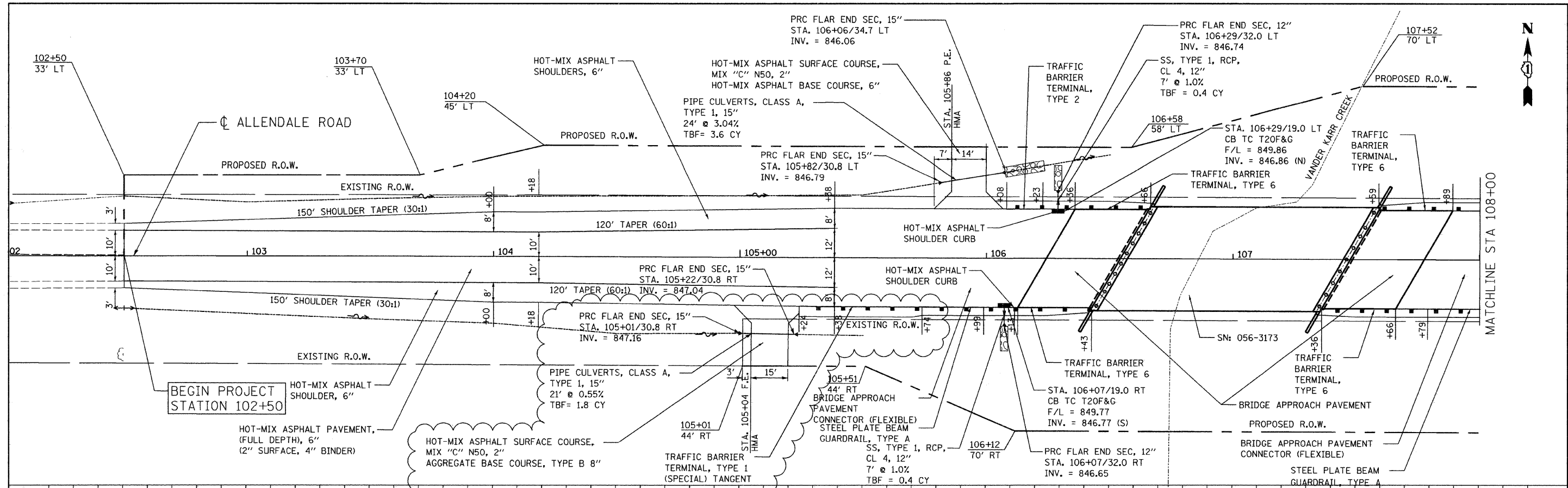
USER NAME = wjancaster	DESIGNED - MWR	REVISED - 4/8/2009
PLLOT SCALE = N.T.S. / IN.	DRAWN - MWR	REVISED -
PLLOT DATE = 4/8/2009	CHECKED - MJL	REVISED -
	DATE - 10/31/2008	REVISED -

**McHENRY COUNTY  
 DIVISION OF TRANSPORTATION**

**TR 73 / ALLENDALE ROAD  
 OVER VANDER KARR CREEK  
 SUMMARY OF QUANTITIES**

SCALE: SHEET NO. OF SHEETS STA. TO STA.

F.A. RTE. 73	SECTION 05-00310-00-BR	COUNTY McHENRY	TOTAL SHEETS 44	SHEET NO. 4
FED. ROAD DIST. NO. ILLINOIS FED. AID PROJECT			CONTRACT NO. 63114	



FILE NAME = \\V:\PROJECTS\Design\ProposedPlan\3325-09-PN1.dgn

825	825	825	830	830	830	835	835	840	840	840	845	845	850	850	850	855	855	860	860	865	865						
EXIST. L.T. DITCH E.	PROP. L.T. DITCH E.	848.88	848.88	848.84	848.26	848.73	848.26	848.58	847.99	847.71	847.71	848.43	847.71	847.71	847.71	847.44	847.44	847.16	847.16	846.89	846.89	846.64	846.36	843.86	843.86	847.24	851.14
102+50	103+00	103+50	104+00	104+50	105+00	105+50	106+00	106+50	107+00	107+50	108+00																

**Ciorba Group, Inc.**  
CONSULTING ENGINEERS  
5507 North Cumberland Avenue, Suite 402  
Chicago, Illinois 60656  
Tel. 773.775.4009 Fax 773.775.4014

USER NAME = wjencastr  
DESIGNED - WBL  
DRAWN - WBL  
PLOT SCALE = 20,000 / IN.  
CHECKED - MJL  
PLOT DATE = 4/8/2009  
DATE - 10/31/2008

REVISÉ - 4/8/2009  
REVISÉ -  
REVISÉ -  
REVISÉ -

**McHENRY COUNTY  
DIVISION OF TRANSPORTATION**

**TR 73/ALLEDALE ROAD  
OVER VANDER KARR CREEK  
PROPOSED PLAN AND PROFILE**

SCALE: 1" = 20'  
SHEET NO. OF SHEETS STA. TO STA.

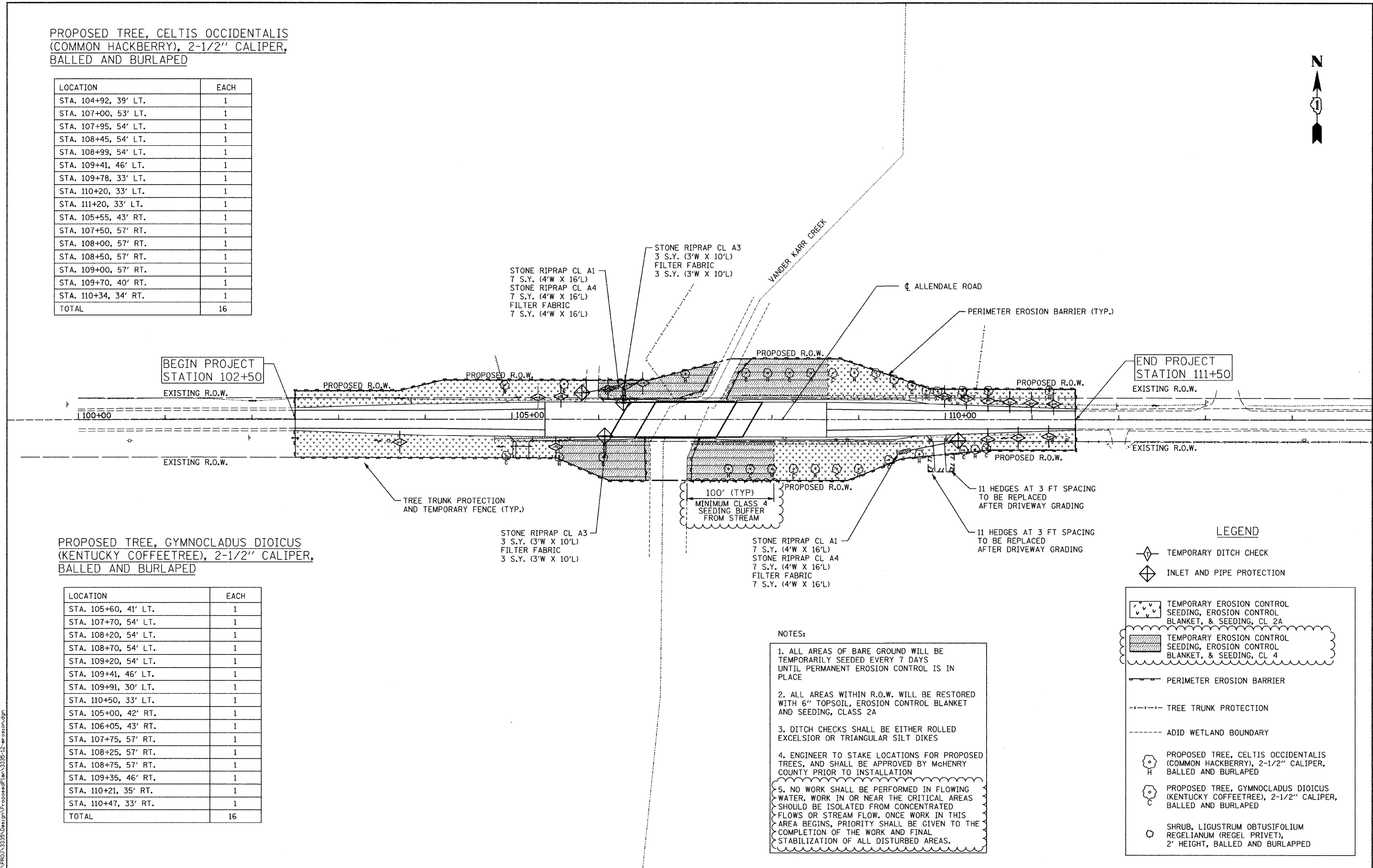
F.A. - RTE. 73	SECTION		COUNTY	TOTAL SHEETS	SHEET NO.
	05-00310-00-BR		McHENRY	44	9
FED. ROAD DIST. NO. - ILLINOIS			FED. AID PROJECT	CONTRACT NO. 63114	

PROPOSED TREE, CELTIS OCCIDENTALIS  
(COMMON HACKBERRY), 2-1/2" CALIPER,  
BALLED AND BURLAPED

LOCATION	EACH
STA. 104+92, 39' LT.	1
STA. 107+00, 53' LT.	1
STA. 107+95, 54' LT.	1
STA. 108+45, 54' LT.	1
STA. 108+99, 54' LT.	1
STA. 109+41, 46' LT.	1
STA. 109+78, 33' LT.	1
STA. 110+20, 33' LT.	1
STA. 111+20, 33' LT.	1
STA. 105+55, 43' RT.	1
STA. 107+50, 57' RT.	1
STA. 108+00, 57' RT.	1
STA. 108+50, 57' RT.	1
STA. 109+00, 57' RT.	1
STA. 109+70, 40' RT.	1
STA. 110+34, 34' RT.	1
TOTAL	16

PROPOSED TREE, GYMNOCLADUS DIOICUS  
(KENTUCKY COFFEETREE), 2-1/2" CALIPER,  
BALLED AND BURLAPED

LOCATION	EACH
STA. 105+60, 41' LT.	1
STA. 107+70, 54' LT.	1
STA. 108+20, 54' LT.	1
STA. 108+70, 54' LT.	1
STA. 109+20, 54' LT.	1
STA. 109+41, 46' LT.	1
STA. 109+91, 30' LT.	1
STA. 110+50, 33' LT.	1
STA. 105+00, 42' RT.	1
STA. 106+05, 43' RT.	1
STA. 107+75, 57' RT.	1
STA. 108+25, 57' RT.	1
STA. 108+75, 57' RT.	1
STA. 109+35, 46' RT.	1
STA. 110+21, 35' RT.	1
STA. 110+47, 33' RT.	1
TOTAL	16



**LEGEND**

- TEMPORARY DITCH CHECK
- INLET AND PIPE PROTECTION
- TEMPORARY EROSION CONTROL SEEDING, EROSION CONTROL BLANKET, & SEEDING, CL 2A
- TEMPORARY EROSION CONTROL SEEDING, EROSION CONTROL BLANKET, & SEEDING, CL 4
- PERIMETER EROSION BARRIER
- TREE TRUNK PROTECTION
- ADID WETLAND BOUNDARY
- PROPOSED TREE, CELTIS OCCIDENTALIS (COMMON HACKBERRY), 2-1/2" CALIPER, BALLED AND BURLAPED
- PROPOSED TREE, GYMNOCLADUS DIOICUS (KENTUCKY COFFEETREE), 2-1/2" CALIPER, BALLED AND BURLAPED
- SHRUB, LIGUSTRUM OBTUSIFOLIUM REGELIANUM (REGEL PRIVET), 2' HEIGHT, BALLED AND BURLAPED

**NOTES:**

- ALL AREAS OF BARE GROUND WILL BE TEMPORARILY SEEDED EVERY 7 DAYS UNTIL PERMANENT EROSION CONTROL IS IN PLACE
- ALL AREAS WITHIN R.O.W. WILL BE RESTORED WITH 6" TOPSOIL, EROSION CONTROL BLANKET AND SEEDING, CLASS 2A
- DITCH CHECKS SHALL BE EITHER ROLLED EXCELSIOR OR TRIANGULAR SILT DIKES
- ENGINEER TO STAKE LOCATIONS FOR PROPOSED TREES, AND SHALL BE APPROVED BY McHENRY COUNTY PRIOR TO INSTALLATION
- NO WORK SHALL BE PERFORMED IN FLOWING WATER. WORK IN OR NEAR THE CRITICAL AREAS SHOULD BE ISOLATED FROM CONCENTRATED FLOWS OR STREAM FLOW. ONCE WORK IN THIS AREA BEGINS, PRIORITY SHALL BE GIVEN TO THE COMPLETION OF THE WORK AND FINAL STABILIZATION OF ALL DISTURBED AREAS.

FILE NAME = N:\PROJ\3335\Design\ProposedPlan\3335-12-er-rosion.dgn

**Ciorba Group, Inc.**  
CONSULTING ENGINEERS  
5507 North Cumberland Avenue, Suite 402  
Chicago, Illinois 60656  
Tel. 773.775.4009 Fax 773.775.4014

USER NAME = wloncaster	DESIGNED - MWR	REVISED - 4/8/2009
PLOT SCALE = 50.0000' / IN.	DRAWN - MWR	REVISED -
PLOT DATE = 4/8/2009	CHECKED - MJL	REVISED -
DATE - 10/31/2008	REVISIONS -	REVISED -

**McHENRY COUNTY  
DIVISION OF TRANSPORTATION**

**TR 73 / ALLENDALE ROAD  
OVER VANDER KARR  
LANDSCAPING & EROSION CONTROL PLAN**

SCALE: 1" = 50' SHEET NO. OF SHEETS STA. TO STA.

F.A. RTE.	SECTION	COUNTY	TOTAL SHEETS	SHEET NO.
73	05-00310-00-BR	McHENRY	44	12
FED. ROAD DIST. NO. [ILLINOIS] FED. AID PROJECT			CONTRACT NO. 63114	