

McHENRY COUNTY
DIVISION OF TRANSPORTATION

NORTH EDGE OF SHOULDER

Location	Station	Offset	Theoretical Grade Elevations
W. End East Appr. Pav't.	107+59.05	20 Lt.	850.56
A3	107+69.05	20 Lt.	850.61
A4	107+79.05	20 Lt.	850.67
E. End East Appr. Pav't	107+89.05	20 Lt.	850.73

NORTH EDGE OF PAVEMENT

Location	Station	Offset	Theoretical Grade Elevations
W. End East Appr. Pav't.	107+54.43	12 Lt.	850.70
A3	107+64.43	12 Lt.	850.75
A4	107+74.43	12 Lt.	850.81
E. End East Appr. Pav't	107+84.43	12 Lt.	850.87

☉ ROADWAY AND PROFILE GRADE

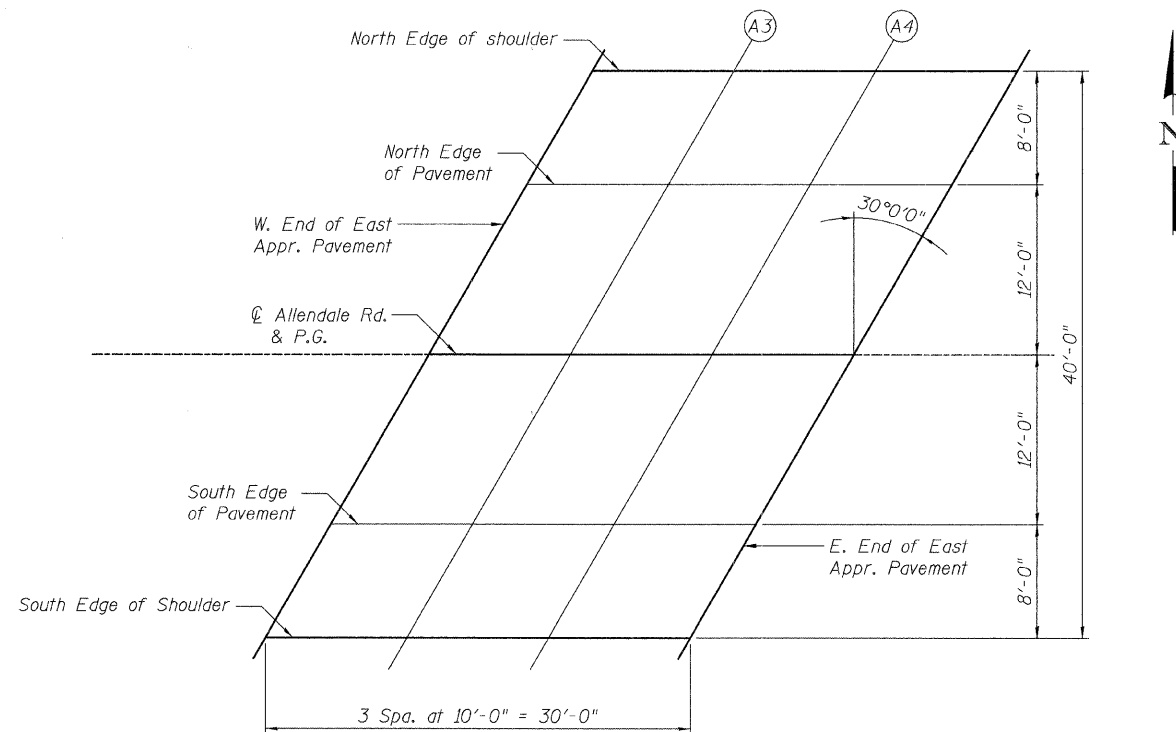
Location	Station	Offset	Theoretical Grade Elevations
W. End East Appr. Pav't.	107+47.50	0.00	850.84
A3	107+57.50	0.00	850.90
A4	107+67.50	0.00	850.96
E. End East Appr. Pav't	107+77.50	0.00	851.02

SOUTH EDGE OF PAVEMENT

Location	Station	Offset	Theoretical Grade Elevations
W. End East Appr. Pav't.	107+40.57	12 Rt.	850.62
A3	107+50.57	12 Rt.	850.67
A4	107+60.57	12 Rt.	850.73
E. End East Appr. Pav't	107+70.57	12 Rt.	850.79

SOUTH EDGE OF SHOULDER

Location	Station	Offset	Theoretical Grade Elevations
W. End East Appr. Pav't.	107+35.95	20 Rt.	850.42
A3	107+45.95	20 Rt.	850.48
A4	107+55.95	20 Rt.	850.54
E. End East Appr. Pav't	107+65.95	20 Rt.	850.60



PLAN
East Approach



DESIGNED	AMK
CHECKED	EKM
DRAWN	RD
CHECKED	EKM



Giorba Group, Inc.
CONSULTING ENGINEERS
5507 North Cumberland Avenue, Suite 402 Chicago, Illinois 60656
Tel. 773.775.4009 Fax 773.775.4014 Email chicago@giorba.com

PA-E 5-16-08

**TOP OF EAST APPROACH
SLAB ELEVATIONS
STRUCTURE NO. 056-3173**

SHEET NO. S-6 OF S-20 SHEETS	F.A. RTE.	SECTION	COUNTY	TOTAL SHEETS	SHEET NO.
		05-00310-00-BR	McHENRY	44	22
			CONTRACT NO. 63114		
FED. ROAD DIST. NO.		ILLINOIS	FED. AID PROJECT		

6.400000 / / IN. rdanley 2/6/2009 N:\PROJ\3335\Design\Structural\CAD\3335 06 Top of East Approach Slab Elevations.dgn