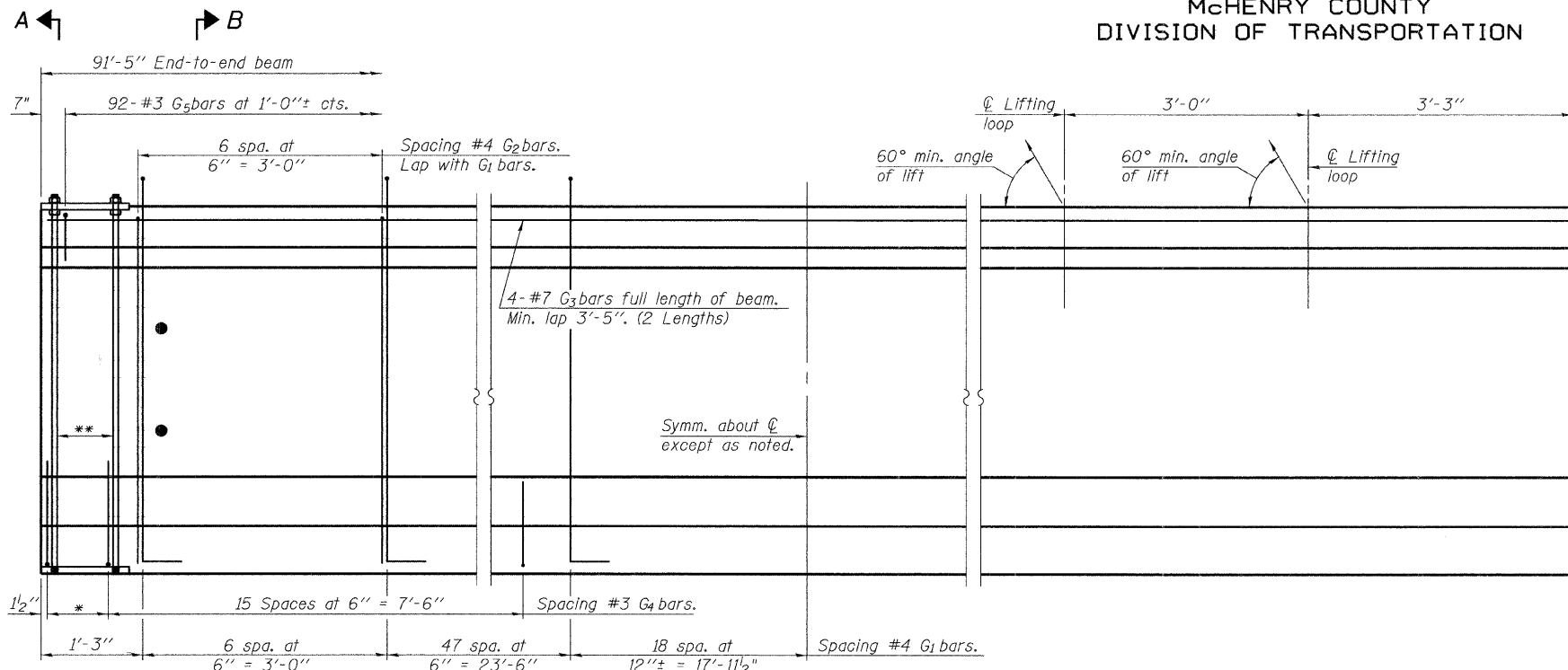


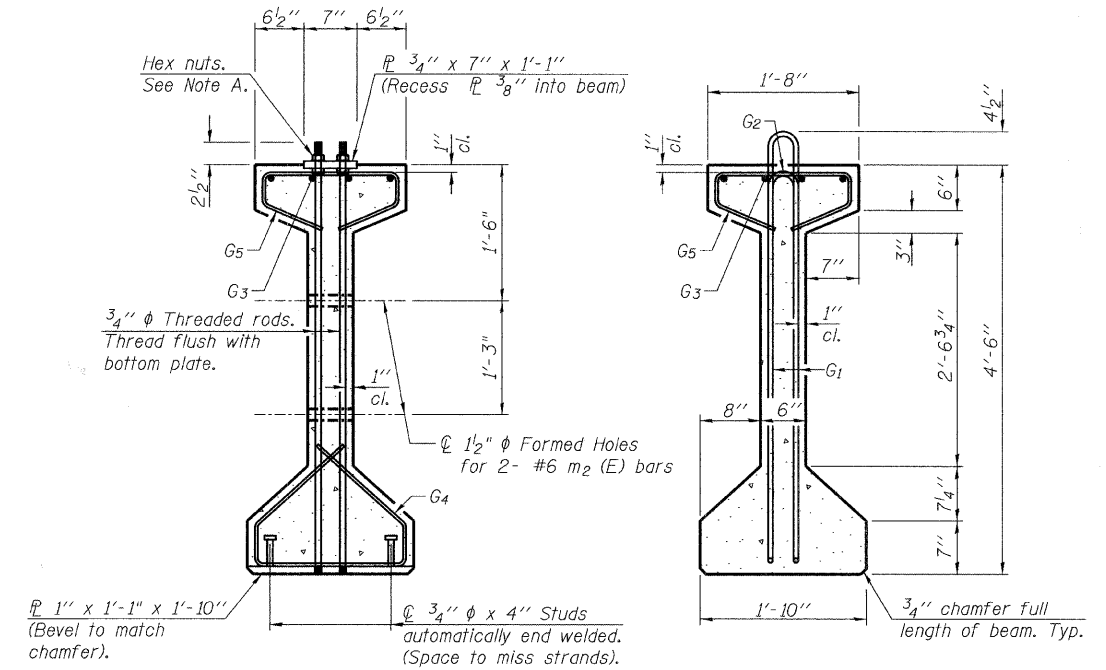
McHENRY COUNTY
DIVISION OF TRANSPORTATION



ELEVATION OF BEAM
(Showing reinforcement & dimensions)

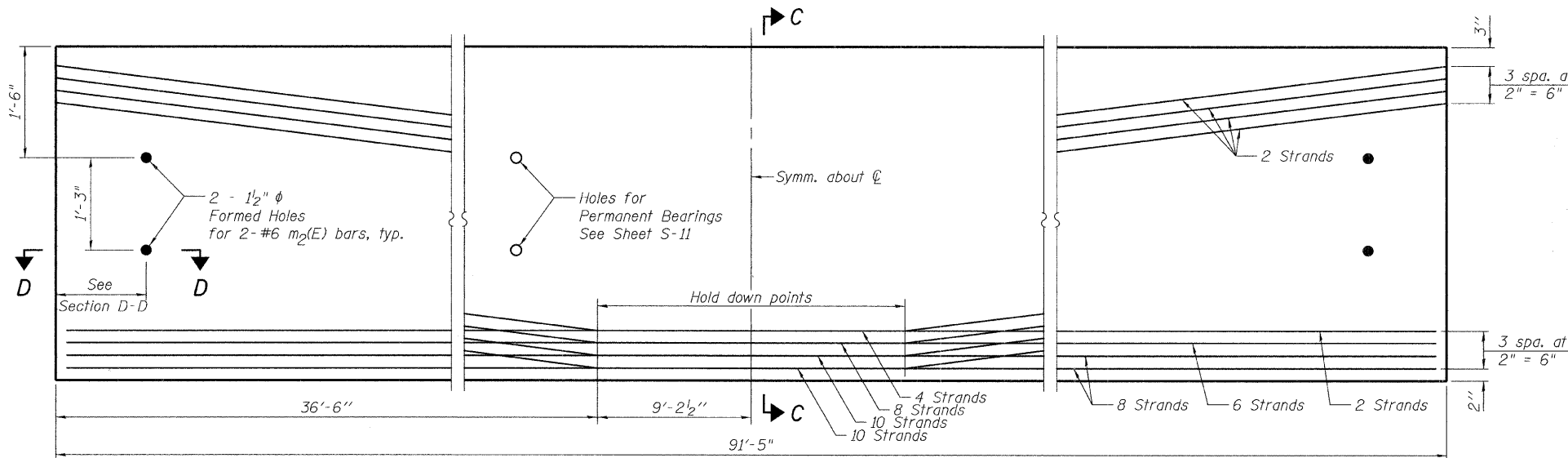
*3 spaces at 3" = 9".
**4-3/4" ϕ threaded dowel rods at 3" cts., Each Face.

Note A:
Hex nuts (top and bottom) with lock washers (top). Only tighten sufficiently to compress lock washers.

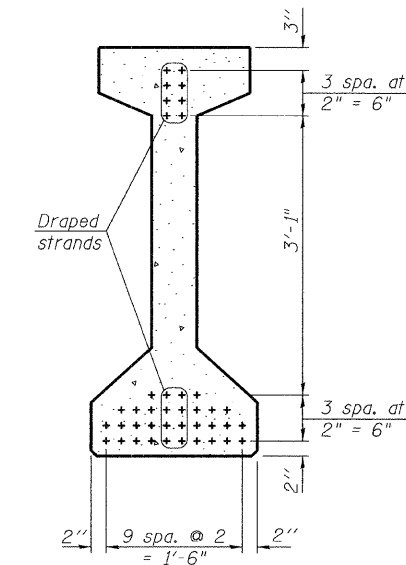


SECTION A-A

SECTION B-B



ELEVATION OF BEAM
(Showing prestressing steel)



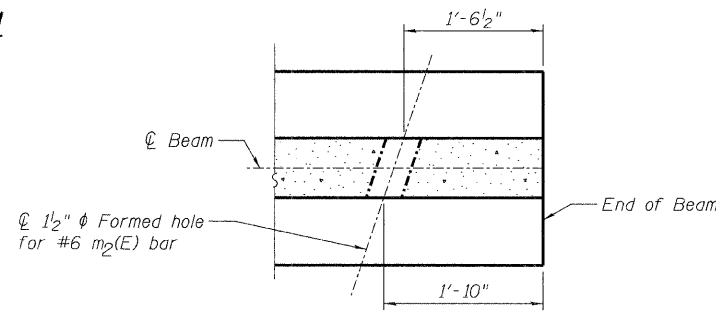
SECTION C-C

*****BAR LIST
ONE BEAM ONLY**

Bar	No.	Size	Length	Shape
G ₁	143	#4	10'-5"	∩L
G ₂	14	#4	8'-8"	∩
G ₃	8	#7	47'-3"	—
G ₄	38	#3	4'-11"	∩
G ₅	92	#3	3'-5"	∩

***For information only

Notes:
See Sheet S-13 for additional details and Bill of Material.
Required release strength, f'ci, shall be 6,000 psi.



SECTION D-D
Other end similar by rotation

DESIGNED	AMK
CHECKED	EKM
DRAWN	RD
CHECKED	EKM
PI-4-54	
5-16-08	



Giorba Group, Inc.
CONSULTING ENGINEERS
5507 North Cumberland Avenue, Suite 402 Chicago, Illinois 60656
Tel. 773.775.4009 Fax 773.775.4014 Email chicago@giorba.com

SHEET NO. S-12 OF S-20 SHEETS	F.A. RTE.	SECTION	COUNTY	TOTAL SHEETS	SHEET NO.
		05-00310-00-BR	McHENRY	44	28
FED. ROAD DIST. NO.			ILLINOIS	FED. AID PROJECT	
			CONTRACT NO. 63114		

**54" PPC I-BEAM DETAILS I
STRUCTURE NO. 056-3173**

1.0000000 / IN.

rdmley

2/6/2009

N:\PROJ\33395\Design\Structural\CAD\3335 12 54 PPC I-BEAM.dgn