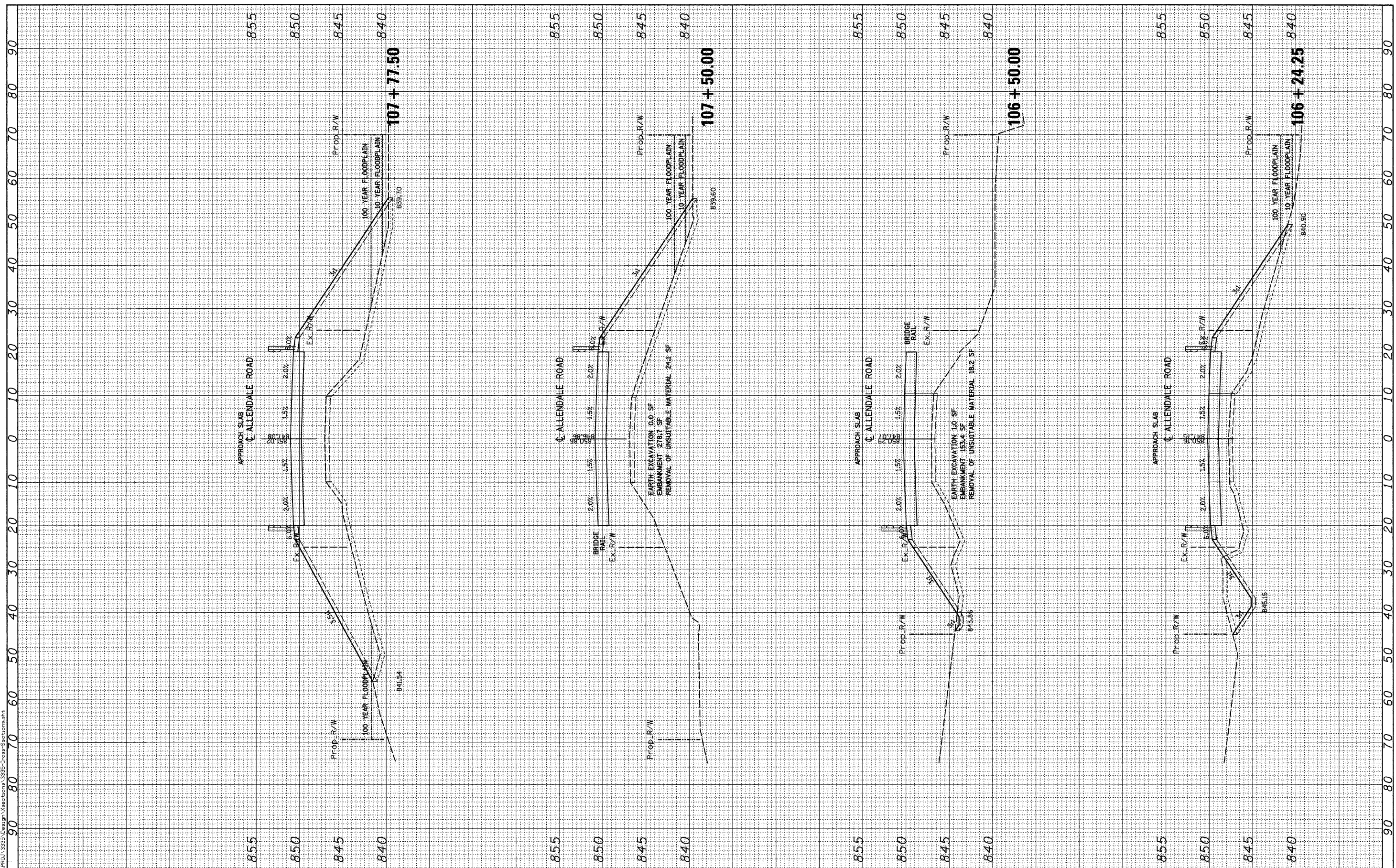


FILE NAME = N:\PROJ\3255\Design\Cross\106+24.25-Cross-Section.dwg



Ciorba Group, Inc.
 CONSULTING ENGINEERS
 5507 North Cumberland Avenue, Suite 402
 Chicago, Illinois 60656
 Tel. 773.775.4009 Fax 773.775.4014

USER NAME = rntumbv	DESIGNED - WBL	REVISED -
PLLOT SCALE = 10.0000' / IN.	DRAWN - WBL	REVISED -
PLLOT DATE = 2/6/2009	CHECKED - MJL	REVISED -
	DATE - 10/31/2008	REVISED -

McHENRY COUNTY
DIVISION OF TRANSPORTATION

TR 73 / ALLEDALE ROAD
OVER VANDER KARR
CROSS SECTIONS

SCALE: SHEET NO. OF SHEETS STA. 106+00.00 TO STA. 108+00.00

F.A. RTE. 73	SECTION 05-00310-00-BR	COUNTY McHENRY	TOTAL SHEETS 44	SHEET NO. 42
FED. ROAD DIST. NO. ILLINOIS		FED. AID PROJECT CONTRACT NO. 63114		