

F.A. RTE.	SECTION	COUNTY	TOTAL SHEETS	SHEET NO.
•	09-00360-00-RS	McHENRY	19	1
FED. ROAD DIST. NO.	ILLINOIS	CONTRACT NO. 63130		

*FAU 3873 (ACKMAN ROAD) AND FAU 4066 (MAIN STREET)

STATE OF ILLINOIS
DEPARTMENT OF TRANSPORTATION
DIVISION OF HIGHWAYS

**PLANS FOR PROPOSED
FEDERAL AID PROJECT**

FAU 3873 (ACKMAN ROAD)
LOCATION 1: EAST OF LAKEWOOD ROAD (FAU 3870) TO
WEST OF HUNTLEY ROAD (FAU 118)
LOCATION 2: GOLF COURSE ROAD (FAU 3872) TO CRIMSON ROAD
FAU 4066 (MAIN STREET)
WEST OF BRIDGE TO WEST OF KREUTZER ROAD (FAU 4068)
RESURFACING
SECTION NO.: 09-00360-00-RS
PROJECT NO.: M-9003 (184)
JOB NO.: C-91-231-09
McHENRY COUNTY

FOR INDEX OF SHEETS, SEE SHEET NO. 2

PROJECT LOCATED IN VILLAGE OF LAKEWOOD, CITY OF CRYSTAL LAKE, AND VILLAGE OF HUNTLEY.

TRAFFIC DATA

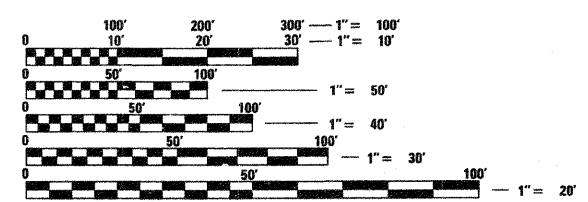
ACKMAN ROAD (LOCATION 1)
ADT (2007) = 9,960
SPEED LIMIT = 45 MPH

ACKMAN ROAD (LOCATION 2)
ADT (2007) = 13,290
SPEED LIMIT = 40 MPH

MAIN STREET
ADT (2007) = 10,170
SPEED LIMIT = 55 MPH

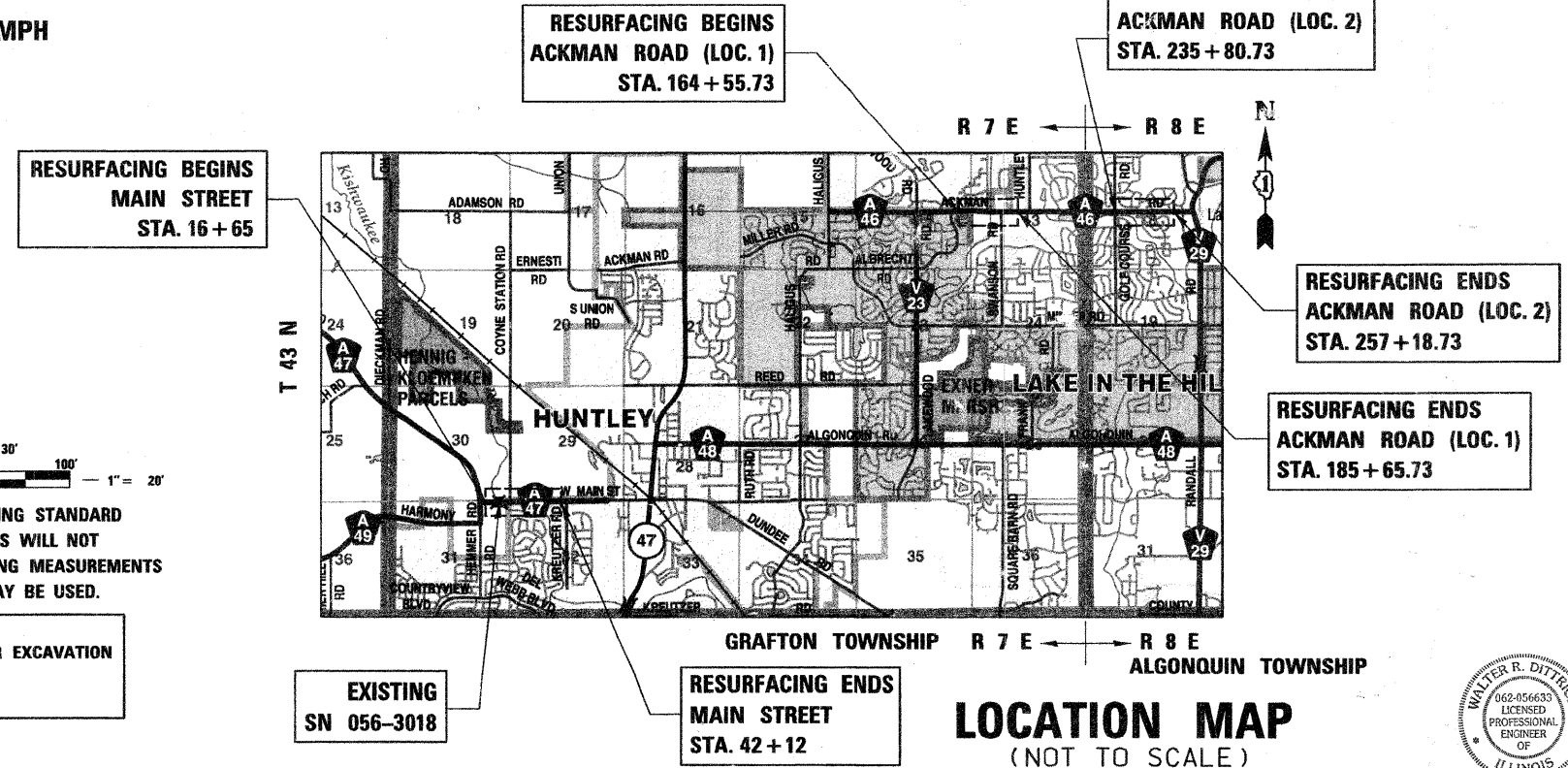


LOCATION OF SECTION INDICATED THUS: - [thick line] -



FULL SIZE PLANS HAVE BEEN PREPARED USING STANDARD ENGINEERING SCALES. REDUCED SIZED PLANS WILL NOT CONFORM TO STANDARD SCALES. IN MAKING MEASUREMENTS ON REDUCED PLANS, THE ABOVE SCALES MAY BE USED.

J.U.L.I.E.
JOINT UTILITY LOCATION INFORMATION FOR EXCAVATION
1-800-892-0123
OR 811



ACKMAN ROAD (GROSS (NET) LENGTH) = 4248 LF = 0.805 MILE
MAIN STREET (GROSS (NET) LENGTH) = 2547 LF = 0.482 MILE

STATE OF ILLINOIS
DEPARTMENT OF TRANSPORTATION
DIVISION OF HIGHWAYS

APPROVED JANUARY 26 20 09

Joseph R. Kopalinski Jr.
COUNTY ENGINEER

PASSED FEBRUARY 13 20 09

Christophe L. ...
DISTRICT 1 ENGINEER OF LOCAL ROADS & STREETS

RELEASING FOR BID
BASED ON LIMITED
REVIEW FEBRUARY 13, 20 09

Diane M. O'Keefe
DEPUTY DIRECTOR OF HIGHWAYS, REGION 1 ENGINEER



W.R.D.
exp. 11-30-09

**PRINTED BY THE AUTHORITY
OF THE STATE OF ILLINOIS**

BUREAU OF LOCAL ROADS AND STREET: ALEX HOUSEH, P.E. KEVIN STALLWORTH, P.E. 647-705-4169 SCHAUMBURG, IL

CONTRACT NO. 63130

INDEX OF SHEETS

SHEET NO.	TITLE
1	COVER SHEET
2	INDEX OF SHEETS, STANDARDS, AND GENERAL NOTES
3	SUMMARY OF QUANTITIES AND DRIVEWAY DETAIL
4-5	TYPICAL SECTIONS AND HMA MIXTURE REQUIREMENTS
6-8	PROPOSED PLAN-ACKMAN ROAD (LOCATION 1)
9-10	PROPOSED PLAN-ACKMAN ROAD (LOCATION 2)
11-12	PROPOSED PLAN-MAIN STREET
13	BD-08DETAILS FOR FRAMES AND LIDS ADJUSTMENT WITH MILLING
14	BD-24 CURB AND CURB AND GUTTER REMOVAL AND REPLACEMENT
15	BD-32 BUTT JOINTS AND HMA TAPER DETAILS
16	TC-10 TRAFFIC CONTROL AND PROTECTION FOR SIDE ROADS, INTERSECTIONS, AND DRIVEWAYS
17	TC-13 DISTRICT ONE TYPICAL PAVEMENT MARKINGS
18	TC-18 SIGNING FOR FLAGGING OPERATIONS AT WORK ZONE OPENING
19	RECESSED PAVEMENT MARKERS DETAIL

LISTS OF STANDARDS

000001-05	ABBREVIATIONS, SYMBOLS AND PATTERN
406201-01	MAILBOX TURNOUTS
442201-03	CLASS C AND D PATCHES
482011-03	HMA SHLD. STRIPS/SHLDS. WITH RESURFACING OR WIDENING AND RESURFACING PROJECTS
606001-04	CONCRETE CURB TYPE B AND COMBINATION CONCRETE CURB AND GUTTER
701011-02	OFF-ROAD MOVING OPERATIONS, 2L, 2W DAY ONLY
701201-03	LANE CLOSURE, 2L, 2W, DAY ONLY, FOR SPEED >=45 MPH
701306-02	LANE CLOSURE, 2L, 2W, SLOW MOVING OPERATIONS DAY ONLY, FOR SPEEDS >= 45 MPH
701311-03	LANE CLOSURE, 2L, 2W, MOVING OPERATIONS-DAY ONLY
701501-05	URBAN LANE CLOSURE, 2L, 2W, UNDIVIDED
701901-01	TRAFFIC CONTROL DEVICES
781001-03	TYPICAL APPLICATIONS RAISED REFLECTIVE PAVEMENT MARKERS
BLR 24-2	MAILBOX TURNOUTS FOR LOCAL ROADS

GENERAL NOTES

1. ALL CONSTRUCTION SHALL BE DONE IN ACCORDANCE WITH THE DETAILS IN THE PLANS, THE SPECIAL PROVISIONS INCLUDED IN THE CONTRACT DOCUMENTS, AND THE LATEST EDITION OF THE FOLLOWING STATE OF ILLINOIS SPECIFICATIONS: "THE STANDARD SPECIFICATIONS FOR ROAD AND BRIDGE CONSTRUCTION" (REFERRED TO AS THE "STANDARD SPECIFICATIONS"), THE "SUPPLEMENTAL SPECIFICATIONS AND RECURRING SPECIAL PROVISIONS", THE "MANUAL ON UNIFORM TRAFFIC CONTROL DEVICES FOR STREETS AND HIGHWAYS" AND THE "MANUAL OF TEST PROCEDURES FOR MATERIALS".

2. BARRICADES: THE CONTRACTOR SHALL PROVIDE AND INSTALL TWO (2) WEIGHTED SAND BAGS ON EACH TYPE I OR TYPE II BARRICADE USED FOR - ONE (1) WEIGHTED SAND BAG ACROSS EACH BOTTOM RAIL.

3. ANY SIGNS THAT ARE IN CONFLICT WITH THE PROPOSED CONSTRUCTION SHALL BE REMOVED AND REPLACED IN ACCORDANCE WITH COUNTY STANDARDS AND INCLUDED IN THE COST OF THE CONTRACT.

4. THE CONTRACTOR SHALL BE RESPONSIBLE FOR THE PROTECTION OF ALL UNDERGROUND OR SURFACE UTILITIES EVEN THOUGH THEY MAY NOT BE SHOWN ON THE PLANS. ANY UTILITY THAT IS DAMAGED DURING CONSTRUCTION SHALL BE REPAIRED OR REPLACED AT THE CONTRACTOR'S EXPENSE TO THE SATISFACTION OF THE ENGINEER OR UTILITY COMPANY.

5. UTILITY LOCATIONS HAVE NOT BEEN SHOWN ON THE PLANS. THE CONTRACTOR SHALL CALL "J.U.L.I.E." AT 800-892-0123 OR 811 FOR FIELD LOCATIONS OF BURIED ELECTRIC, PHONE, AND GAS FACILITIES PRIOR TO BEGINNING CONSTRUCTION. (48-HOUR NOTIFICATION REQUIRED)

6. THE CONTRACTOR SHALL COORDINATE CONSTRUCTION ACTIVITIES WITH UTILITY COMPANIES AND THE ENGINEER.

7. THE CONTRACTOR SHALL NOTIFY IDOT BUREAU OF MATERIALS (PHONE (847)-705-4337) AT LEAST 24 HOURS PRIOR TO THE PLACEMENT OF HMA OR CONCRETE.

8. SAW CUTTING OF PAVEMENTS, SHOULDERS, ETC. SHALL BE TO FULL DEPTH AND SHALL RESULT IN A CLEAN, STRAIGHT EDGE ON THE PORTION REMAINING. ALL SAWCUTTING SHALL BE CONSIDERED INCLUDED IN THE COST OF THE CONTRACT.

9. ALL MAILBOXES IMPACTED AS PART OF THE PROJECT, PER SECTION 107.20 OF THE IDOT STANDARD SPECIFICATIONS, SHALL BE RELOCATED AND WILL NOT BE PAID FOR SEPARATELY, BUT SHALL BE CONSIDERED AS INCLUDED IN THE COST OF THE CONTRACT.

10. THE CONTRACTOR SHALL MAINTAIN ACCESS TO RESIDENTS DRIVEWAY AT ALL TIMES.

11. THE CONTRACTOR SHALL UTILIZE A MECHANICAL SWEEPER TO CLEAN STREETS AFFECTED BY CONTRACTOR'S OPERATIONS, INCLUDING HAUL ROUTE, AT LEAST TWICE PER WEEK AND ADDITIONALLY AS DIRECTED BY THE ENGINEER. THIS WORK SHALL BE INCLUDED IN THE COST OF CONSTRUCTION.

12. ON STREETS TO BE FULL MILLED, THE STRUCTURES IN THE PAVEMENT SHALL BE ADJUSTED IN ACCORDANCE WITH THE IDOT DETAIL "DETAILS FOR FRAME AND LIDS ADJUSTMENT WITH MILLING". THIS WORK SHALL BE PAID FOR AT THE CONTRACT UNIT PRICE FOR FRAME AND LIDS TO BE ADJUSTED (SPECIAL).

13. PORTIONS OF THE EXISTING CURB AND GUTTER MAY NEED TO BE REPLACED. IF ANY CURB AND GUTTER NEEDS TO BE REPLACE, THIS WORK SHALL BE PAID FOR AT THE CONTRACT UNIT PRICE FOR COMBINATION CONCRETE CURB AND GUTTER REMOVAL AND REPLACEMENT.

14. THE CONTRACTOR SHALL BE RESPONSIBLE FOR DISPOSING OF ALL SURPLUS MATERIALS RELATED TO THE JOB AFTER COMPLETING THE PAVING PROJECT.

15. THE THERMOPLASTIC PAVEMENT MARKINGS MAY BE ADJUSTED FROM THE PLANS BY THE ENGINEER.

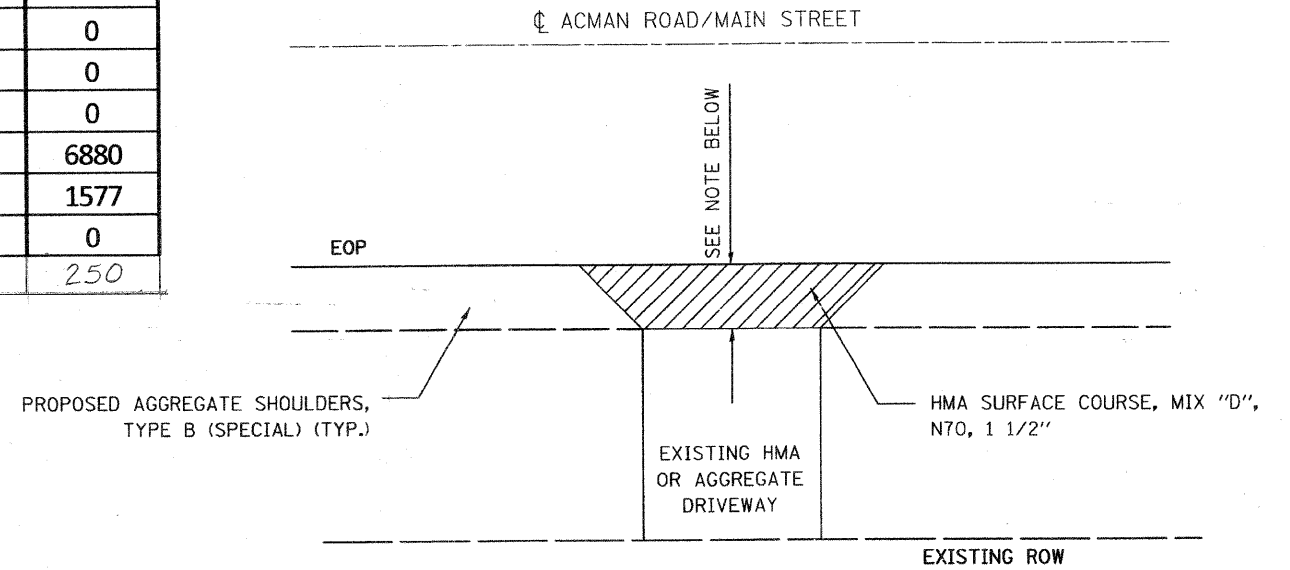
16. ALL PAVEMENT MARKINGS REMOVED SHALL BE REPLACED. THE CONTRACTOR SHALL BE RESPONSIBLE FOR VERIFYING THE EXISTING PAVEMENT MARKING LAYOUT BEFORE REMOVAL. THE PROPOSED LAYOUT OF THE PAVEMENT MARKINGS ARE APPROXIMATE ONLY.

*FAU 3873 (ACKMAN ROAD) AND FAU 4066 (MAIN STREET)

FILE NAME =	USER NAME = #USER#	DESIGNED -	REVISED -	McHENRY COUNTY DIVISION OF TRANSPORTATION ACKMAN ROAD AND MAIN STREET LAPP IMPROVEMENTS	INDEX OF SHEETS, STATE STANDARDS, AND GENERAL NOTES	F.A. RTE.	SECTION	COUNTY	TOTAL SHEETS	SHEET NO.	
#FILE#		DRAWN -	REVISED -			*	09-00360-00-RS	McHENRY	19	2	
	PLOT SCALE = #SCALE#	CHECKED -	REVISED -			CONTRACT NO. 63130					
	PLOT DATE = #DATE#	DATE -	REVISED -			SCALE:	SHEET NO.	OF	SHEETS	STA.	TO STA.

SUMMARY OF QUANTITIES				TOTAL QUANTITY	1000	
CODE NO.	ITEM DESCRIPTION	UNIT	ACKMAN ROAD		MAIN STREET	
40600100	BITUMINOUS MATERIALS (PRIME COAT)	GALLON	3,622	2610	1012	
40600300	AGGREGATE PRIME COAT	TON	34	25	9	
40600635	LEVELING BINDER (MACHINE METHOD), N70	TON	500	400	100	
40600895	CONSTRUCTING TEST STRIP	EACH	4	2	2	
40603085	HOT-MIX ASPHALT BINDER COURSE, IL-19.0, N70	TON	2,928	2110	818	
40603340	HOT-MIX ASPHALT SURFACE COURSE, MIX "D", N70	TON	1,901	1370	531	
44000196	HOT-MIX ASPHALT SURFACE REMOVAL, SPECIAL	SQ YD	22,636	16313	6323	
44001700	COMBINATION CONCRETE CURB AND GUTTER REMOVAL AND REPLACEMENT	FOOT	50	50	0	
44201723	CLASS D PATCHES, TYPE IV, 6 INCH	SQ YD	250	175	75	
60300310	FRAMES AND LIDS TO BE ADJUSTED (SPECIAL)	EACH	4	4	0	
67100100	MOBILIZATION	LSUM	1	0.5	0.5	
70101700	TRAFFIC CONTROL & PROTECTION	LSUM	1	0.5	0.5	
* 78000100	THERMOPLASTIC PAVEMENT MARKING-LETTERS AND SYMBOLS	SQ FT	182	182	0	
* 78000200	THERMOPLASTIC PAVEMENT MARKING- LINE 4"	FT	27,242	19818	7424	
* 78000400	THERMOPLASTIC PAVEMENT MARKING- LINE 6"	FT	999	999	0	
* 78000600	THERMOPLASTIC PAVEMENT MARKING - LINE 12"	FT	296	296	0	
78300200	RAISED REFLECTIVE PAVEMENT MARKER REMOVAL	EACH	178	178	0	
X7030200	SHORT-TERM PAVEMENT MARKING (SPECIAL)	FOOT	13,060	6180	6880	
XX002870	AGGREGATE SHOULDERS, TYPE B (SPECIAL)	SQ YD	4,410	2833	1577	
* XX006257	RECESSED REFLECTIVE PAVEMENT MARKER	EACH	178	178	0	
Δ Z0076600	TRAINEES	HOUR	500	250	250	

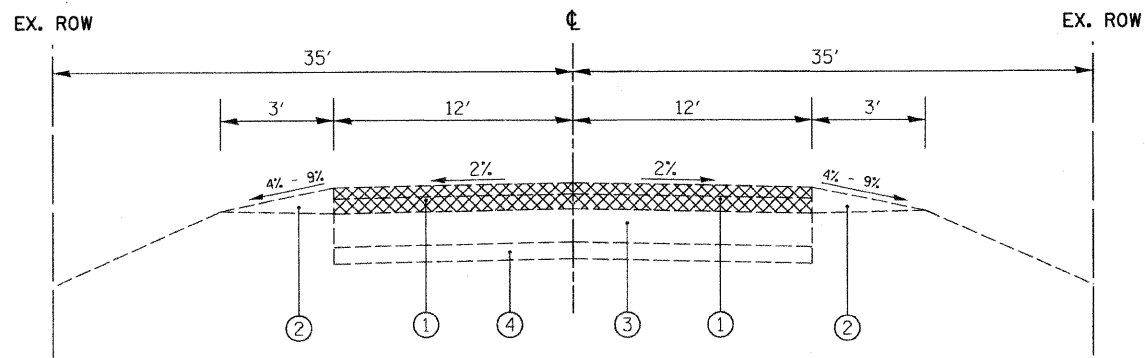
ΔY080 * SPECIALTY ITEMS



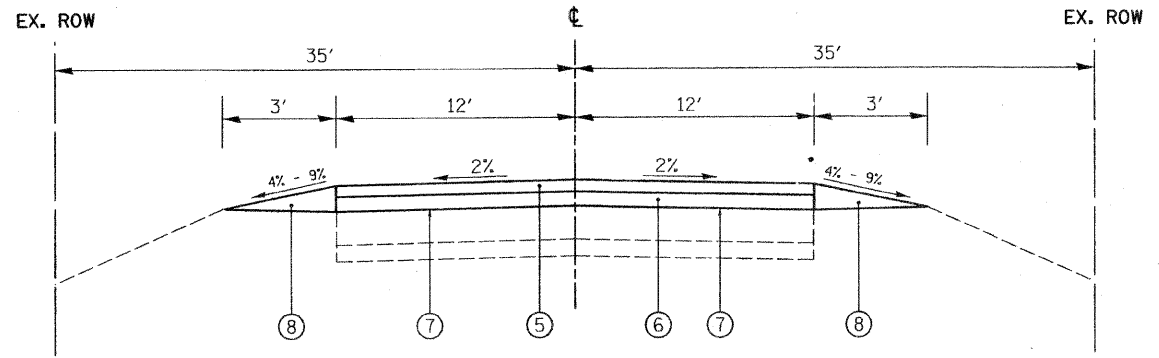
DRIVEWAY DETAIL

NOTE: 3' MAX. WHEN MATCHING EXISTING DRIVEWAY OR WHATEVER DIMENSION IS NECESSARY TO CREATE AND MAINTAIN A SATISFACTORY RIDING CONDITION. VARIABLE DIMENSIONS ARE SUBJECT TO ENGINEER APPROVAL.

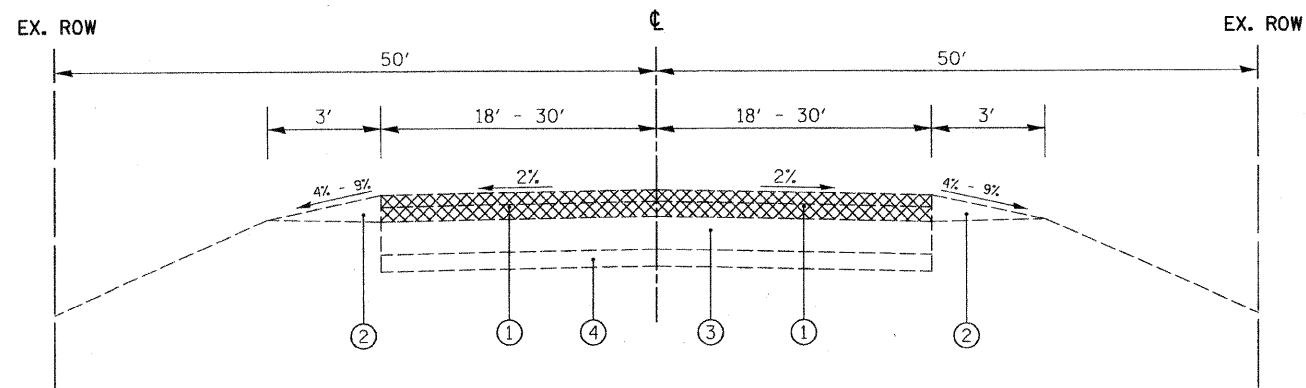
*FAU 3873 (ACKMAN ROAD) AND FAU 4066 (MAIN STREET)



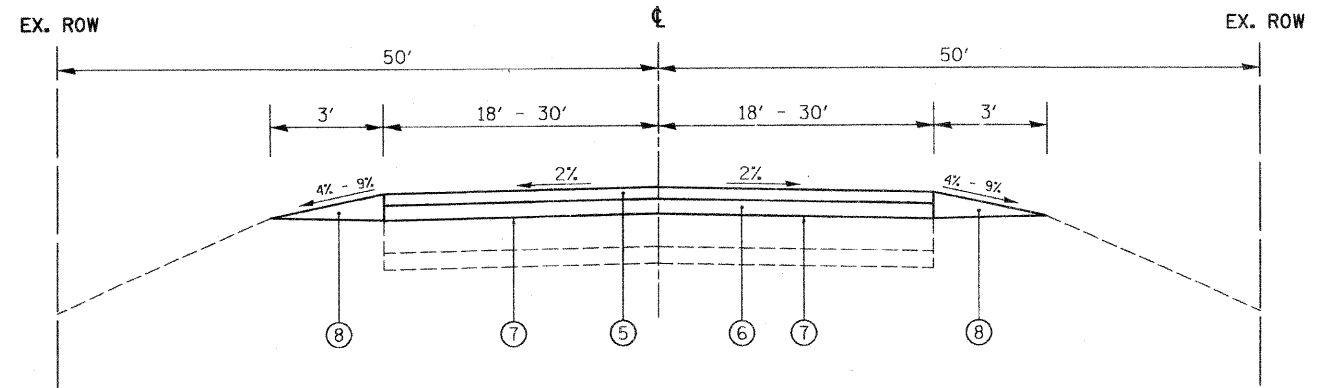
EXISTING TYPICAL SECTION
ACKMAN ROAD
STA. 164+55.73 TO 185+65.73




PROPOSED TYPICAL SECTION
ACKMAN ROAD
STA. 164+55.73 TO 185+65.73



EXISTING TYPICAL SECTION
ACKMAN ROAD
STA. 235+80.73 TO 247+00
STA. 250+32.23 TO 255+58.73



PROPOSED TYPICAL SECTION
ACKMAN ROAD
STA. 235+80.73 TO 247+00
STA. 250+32.23 TO 255+58.73

 PROPOSED HOT-MIX ASPHALT SURFACE REMOVAL, (SPECIAL), 3 3/4"

LEGEND

- ① HOT-MIX ASPHALT SURFACE REMOVAL, (SPECIAL), 3 3/4"
- ② EXISTING AGGREGATE SHOULDERS
- ③ EXISTING HMA BASE COURSE
- ④ EXISTING AGGREGATE BASE
- ⑤ PROPOSED HOT-MIX ASPHALT SURFACE COURSE, MIX D, N70, 1 1/2" (IL 9.5)
- ⑥ PROPOSED HOT-MIX ASPHALT BINDER COURSE, IL-19.0, N70, 2 1/4"
- ⑦ PROPOSED BITUMINOUS MATERIALS (PRIME COAT) AND AGGREGATE (PRIME COAT)
- ⑧ PROPOSED AGGREGATE SHOULDERS, TYPE B, (SPECIAL)

NOTE

LEVELING BINDER (MACHINE METHOD), N70 WILL BE USED, AS NECESSARY, FOR SLOPE CORRECTION.

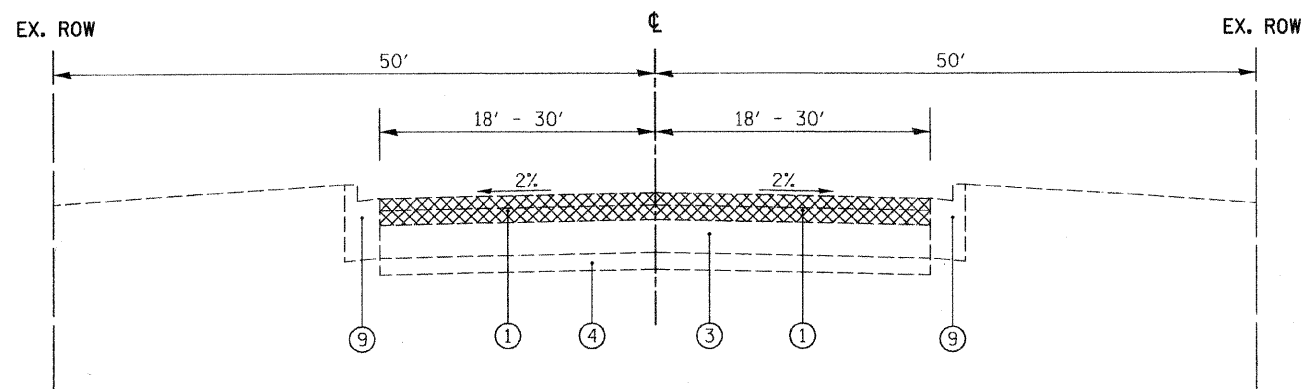
HOT-MIX ASPHALT MIXTURE REQUIREMENTS

MIXTURE TYPE	AC TYPE	AIR VOIDS
PAVEMENT RESURFACING:		
HOT-MIX ASPHALT SURFACE COURSE, MIX "D", N70 (IL 9.5 mm)	PG 64-22 *	4% @ 70 GYR.
HOT-MIX ASPHALT BINDER COURSE, IL-19.0, N70	PG 64-22 *	4% @ 70 GYR.
SLOPE CORRECTION:		
LEVELING BINDER (MACHINE METHOD), N70 (IL 9.5 mm)	PG 64-22 *	4% @ 70 GYR.
PATCHING:		
CLASS D PATCHES (HMA BINDER IL-19mm)	PG 64-22 *	4% @ 70 GYR.

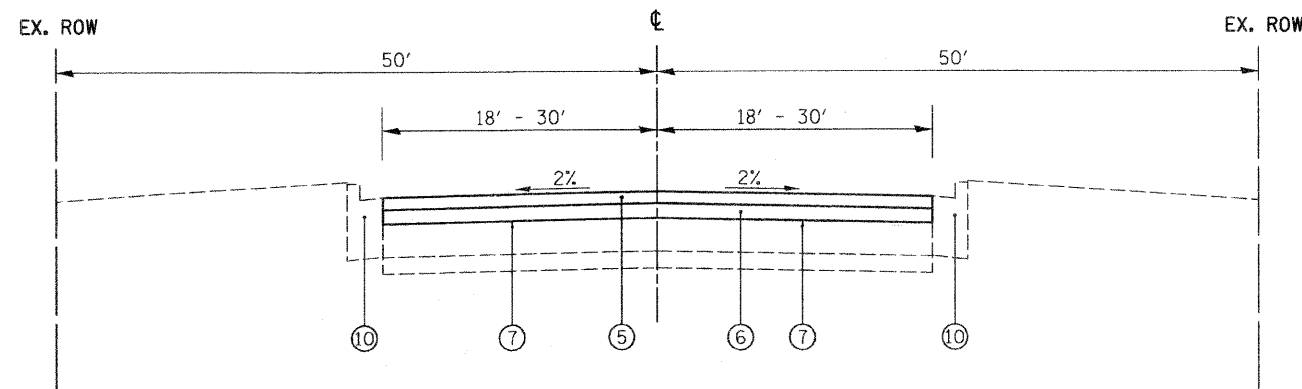
THE UNIT WEIGHT USED TO CALCULATE ALL HMA SURFACE MIXTURE QUANTITIES IS 112 LBS/SQ YD/IN.
 * WHEN RAP EXCEEDS 20%, THE NEW ASPHALT BINDER IN THE MIX SHALL BE PG 58-22.

*FAU 3873 (ACKMAN ROAD) AND FAU 4066 (MAIN STREET)

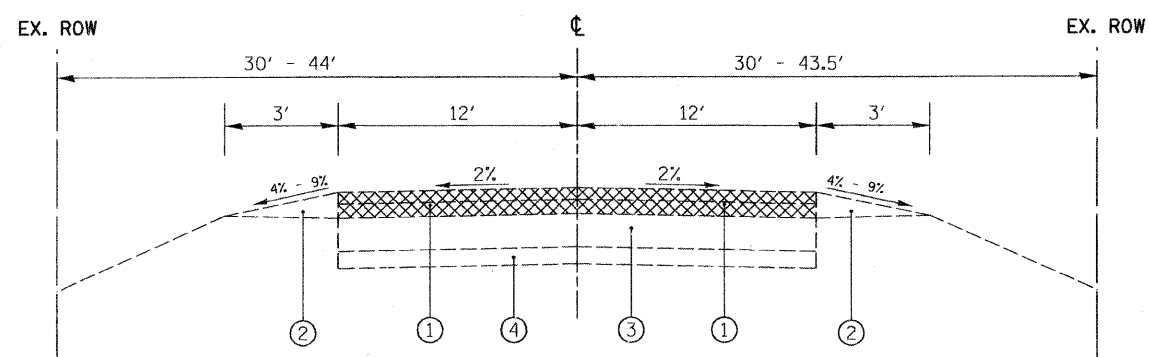
FILE NAME = #FILE#	USER NAME = #USER#	DESIGNED -	REVISED -	McHENRY COUNTY DIVISION OF TRANSPORTATION ACKMAN ROAD AND MAIN STREET LAPP IMPROVEMENTS	TYPICAL SECTIONS AND HMA MIXTURE REQUIREMENTS			F.A. RTE.	SECTION	COUNTY	TOTAL SHEETS	SHEET NO.	
		DRAWN -	REVISED -		SCALE: NTS	SHEET NO.	OF SHEETS	STA.	TO STA.	09-00360-00-RS	McHENRY	19	4
		CHECKED -	REVISED -		CONTRACT NO. 63130								
		DATE -	REVISED -		FED. ROAD DIST. NO. [ILLINOIS] FED. AID PROJECT								



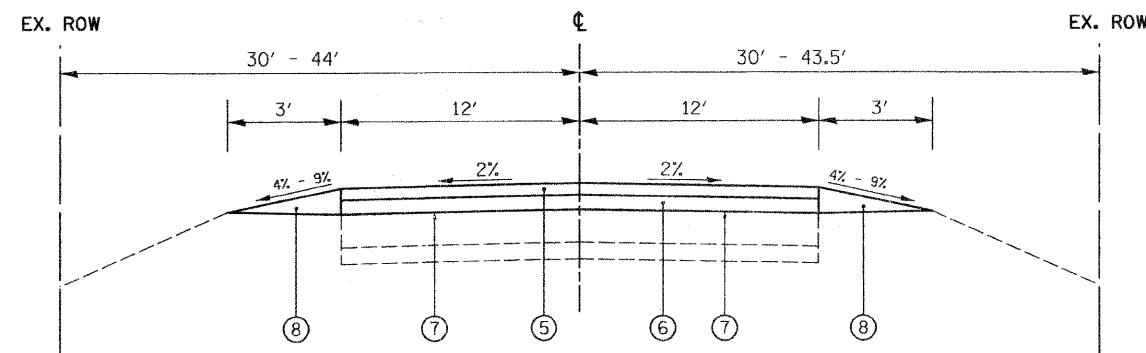
EXISTING TYPICAL SECTION
ACKMAN ROAD
 STA. 247+00 TO 250+32.23
 STA. 255+58.73 TO 257+18.73




PROPOSED TYPICAL SECTION
ACKMAN ROAD
 STA. 247+00 TO 250+32.23
 STA. 255+58.73 TO 257+18.73



EXISTING TYPICAL SECTION
MAIN STREET



PROPOSED TYPICAL SECTION
MAIN STREET

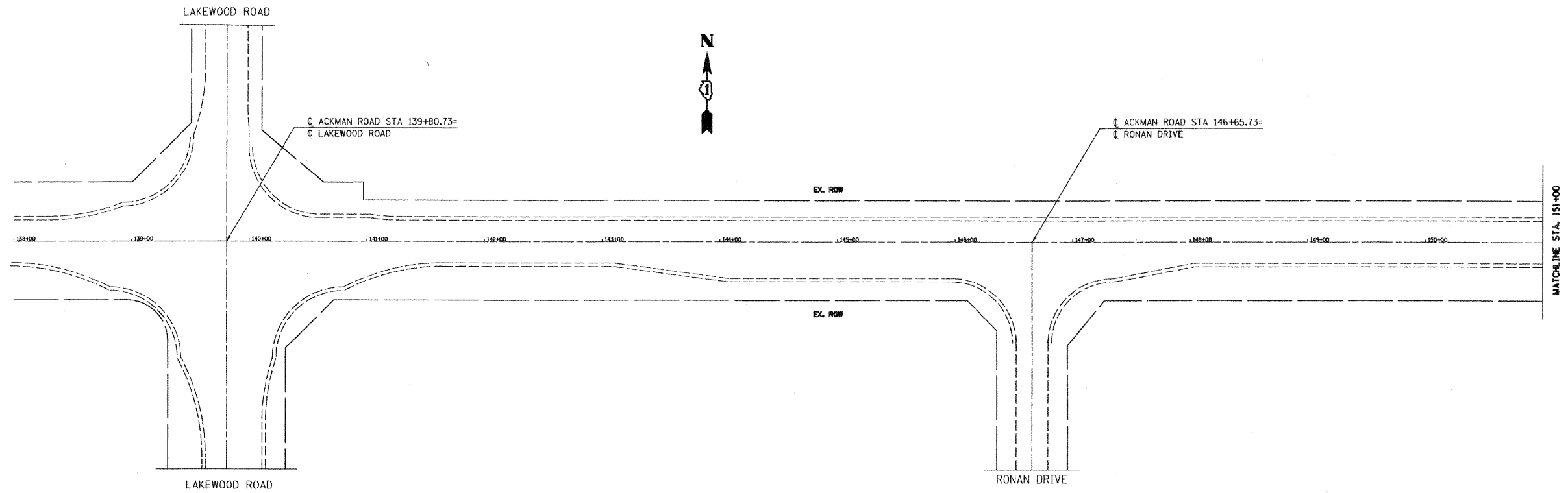
 PROPOSED HOT-MIX ASPHALT SURFACE REMOVAL, (SPECIAL), 3 3/4"

LEGEND

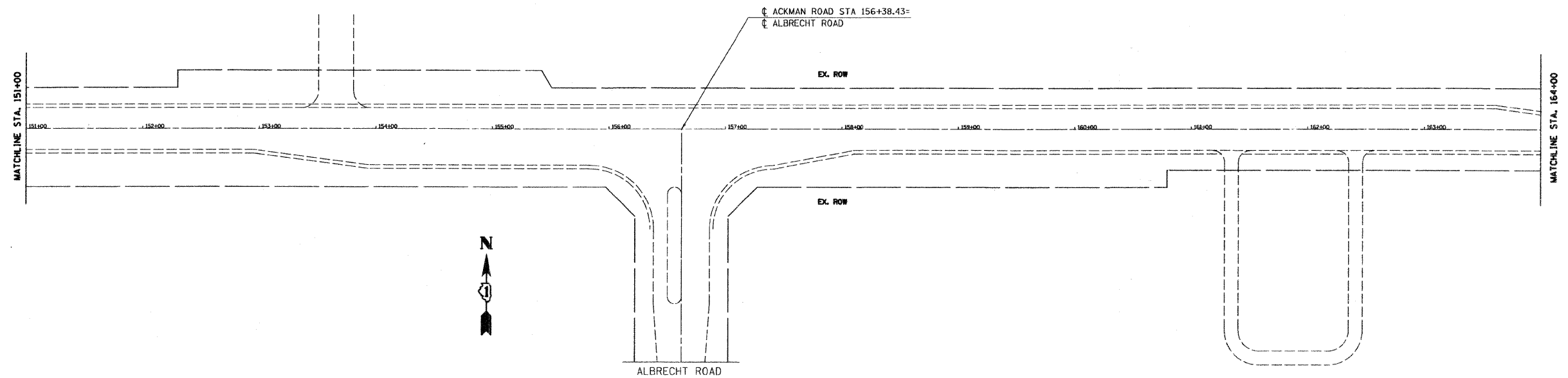
- ① HOT-MIX ASPHALT SURFACE REMOVAL, (SPECIAL), 3 3/4"
- ② EXISTING AGGREGATE SHOULDERS
- ③ EXISTING HMA BASE COURSE
- ④ EXISTING AGGREGATE BASE
- ⑤ PROPOSED HOT-MIX ASPHALT SURFACE COURSE, MIX D, N70, 1 1/2" (IL 9.5)
- ⑥ PROPOSED HOT-MIX ASPHALT BINDER COURSE, IL-19.0, N70, 2 1/4"
- ⑦ PROPOSED BITUMINOUS MATERIALS (PRIME COAT) AND AGGREGATE (PRIME COAT)
- ⑧ PROPOSED AGGREGATE SHOULDERS, TYPE B, (SPECIAL)
- ⑨ EXISTING COMBINATION CONCRETE CURB AND GUTTER
- ⑩ PROPOSED COMBINATION CONCRETE CURB AND GUTTER REMOVAL AND REPLACEMENT

*FAU 3873 (ACKMAN ROAD) AND FAU 4066 (MAIN STREET)

FILE NAME =	USER NAME = #USER#	DESIGNED -	REVISED -	McHENRY COUNTY DIVISION OF TRANSPORTATION ACKMAN ROAD AND MAIN STREET LAPP IMPROVEMENTS	TYPICAL SECTIONS AND HMA MIXTURE REQUIREMENTS			F.A. RTE.	SECTION	COUNTY	TOTAL SHEETS	SHEET NO.
#FILE#		DRAWN -	REVISED -					09-00360-00-RS	McHENRY	19	5	
	PLOT SCALE = #SCALE#	CHECKED -	REVISED -		SCALE:	SHEET NO. OF SHEETS	STA. TO STA.	CONTRACT NO. 63130				
	PLOT DATE = #DATE#	DATE -	REVISED -					FED. ROAD DIST. NO.	ILLINOIS FED. AID PROJECT			



ACKMAN ROAD (LOCATION 1)



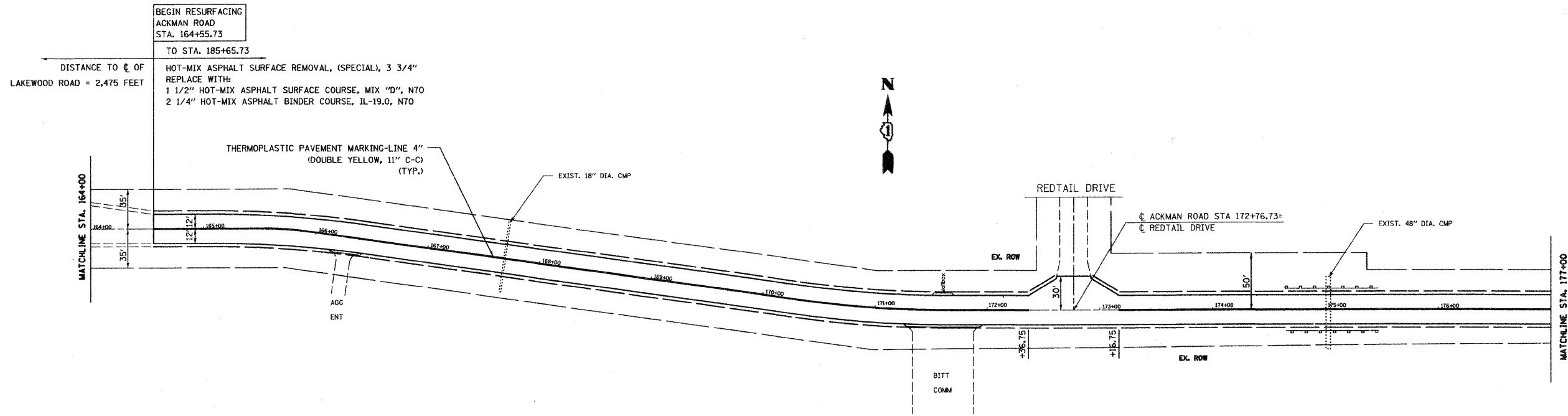
ACKMAN ROAD (LOCATION 1)

NOTES:

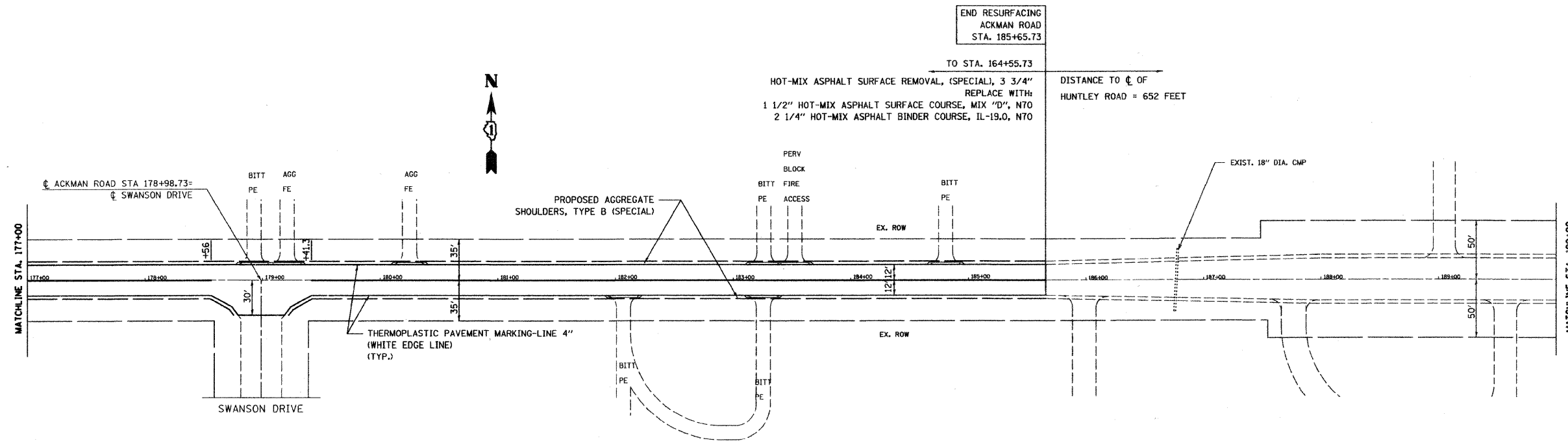
- 1) FOR PAVEMENT MARKING DETAILS, FOLLOW DISTRICT 1 STANDARD TC-13 "DISTRICT ONE TYPICAL PAVEMENT MARKINGS", WHERE APPLICABLE.
- 2) RECESSED REFLECTIVE PAVEMENT MARKERS SHALL FOLLOW STANDARD 781001-03 TYPICAL APPLICATIONS RAISED REFLECTIVE PAVEMENT MARKERS. SEE "RECESSED PAVEMENT MARKER DETAIL" FOR INSTALLATION.

*FAU 3873 (ACKMAN ROAD) AND FAU 4066 (MAIN STREET)

FILE NAME = #FILE#	USER NAME = #USER*	DESIGNED -	REVISED -	McHENRY COUNTY DIVISION OF TRANSPORTATION	ACKMAN ROAD (LOCATION 1)	SCALE: 1"=50'	SHEET NO. OF SHEETS STA. TO STA.	F.A. RTE.	SECTION	COUNTY	TOTAL SHEETS	SHEET NO.
	PLOT SCALE = #SCALE*	CHECKED -	REVISED -					*	09-00360-00-RS	McHENRY	19	6
	PLOT DATE = #DATE*	DATE -	REVISED -	ACKMAN ROAD AND MAIN STREET	PROPOSED PLAN							
								CONTRACT NO. 63130				
								ILLINOIS FED. AID PROJECT				



ACKMAN ROAD (LOCATION 1)



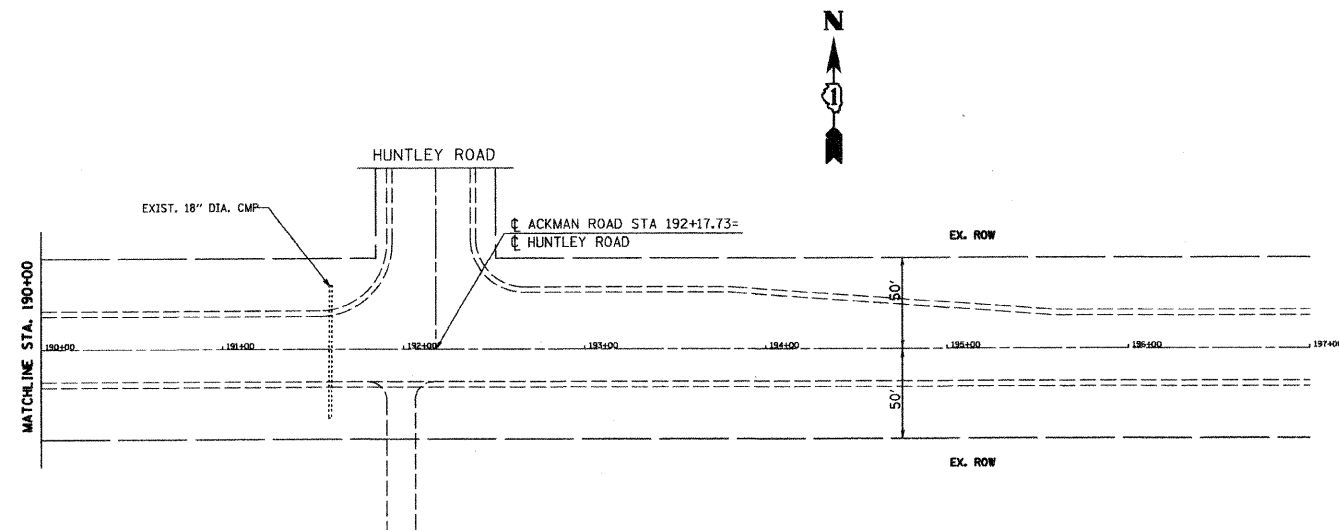
NOTES:

- 1) FOR PAVEMENT MARKING DETAILS, FOLLOW DISTRICT 1 STANDARD TC-13 "DISTRICT ONE TYPICAL PAVEMENT MARKINGS", WHERE APPLICABLE.
- 2) RECESSED REFLECTIVE PAVEMENT MARKERS SHALL FOLLOW STANDARD 781001-03 TYPICAL APPLICATIONS RAISED REFLECTIVE PAVEMENT MARKERS. SEE "RECESSED PAVEMENT MARKER DETAIL" FOR INSTALLATION.

ACKMAN ROAD (LOCATION 1)

*FAU 3873 (ACKMAN ROAD) AND FAU 4066 (MAIN STREET)

FILE NAME =	USER NAME = #USER#	DESIGNED -	REVISED -	McHENRY COUNTY DIVISION OF TRANSPORTATION ACKMAN ROAD AND MAIN STREET LAPP IMPROVEMENTS	ACKMAN ROAD (LOCATION 1) PROPOSED PLAN			F.A. RTE.	SECTION	COUNTY	TOTAL SHEETS	SHEET NO.		
#FILE#		DRAWN -	REVISED -		SCALE: 1"=50'	SHEET NO.	OF	SHEETS	STA.	TO STA.	09-00360-00-RS	McHENRY	19	7
	PLOT SCALE = #SCALE#	CHECKED -	REVISED -								CONTRACT NO. 63130			
	PLOT DATE = #DATE#	DATE -	REVISED -								FED. ROAD DIST. NO.	ILLINOIS	FED. AID PROJECT	



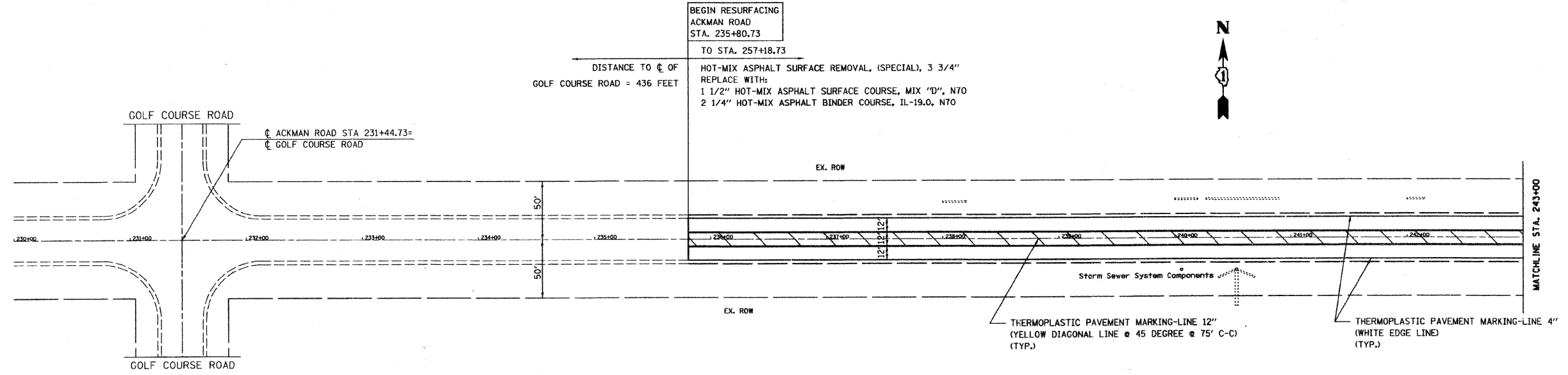
ACKMAN ROAD (LOCATION 1)

NOTES:

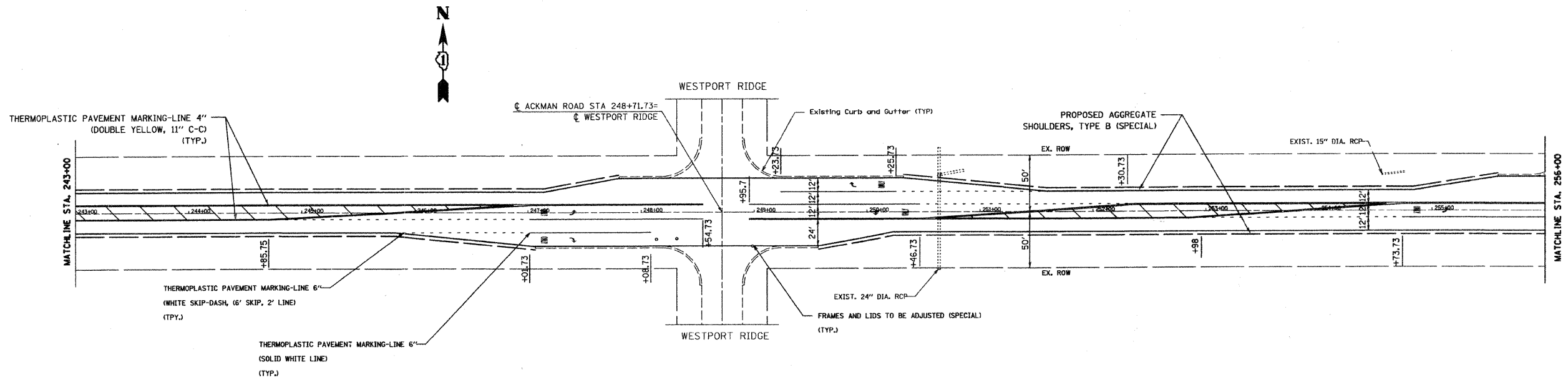
- 1) FOR PAVEMENT MARKING DETAILS, FOLLOW DISTRICT 1 STANDARD TC-13 "DISTRICT ONE TYPICAL PAVEMENT MARKINGS", WHERE APPLICABLE.
- 2) RECESSED REFLECTIVE PAVEMENT MARKERS SHALL FOLLOW STANDARD 781001-03 TYPICAL APPLICATIONS RAISED REFLECTIVE PAVEMENT MARKERS. SEE "RECESSED PAVEMENT MARKER DETAIL" FOR INSTALLATION.

*FAU 3873 (ACKMAN ROAD) AND FAU 4066 (MAIN STREET)

FILE NAME =	USER NAME = #USER#	DESIGNED -	REVISED -	McHENRY COUNTY DIVISION OF TRANSPORTATION ACKMAN ROAD AND MAIN STREET LAPP IMPROVEMENTS	ACKMAN ROAD (LOCATION 1) PROPOSED PLAN			F.A. RTE.	SECTION	COUNTY	TOTAL SHEETS	SHEET NO.			
#FILE#		DRAWN -	REVISED -		SCALE: 1"=50'	SHEET NO.	OF	SHEETS	STA.	TO STA.	*	09-00360-00-RS	McHENRY	19	8
	PLOT SCALE = #SCALE#	CHECKED -	REVISED -		CONTRACT NO. 63130										
	PLOT DATE = #DATE#	DATE -	REVISED -		FED. ROAD DIST. NO. ILLINOIS FED. AID PROJECT										



ACKMAN ROAD (LOCATION 2)



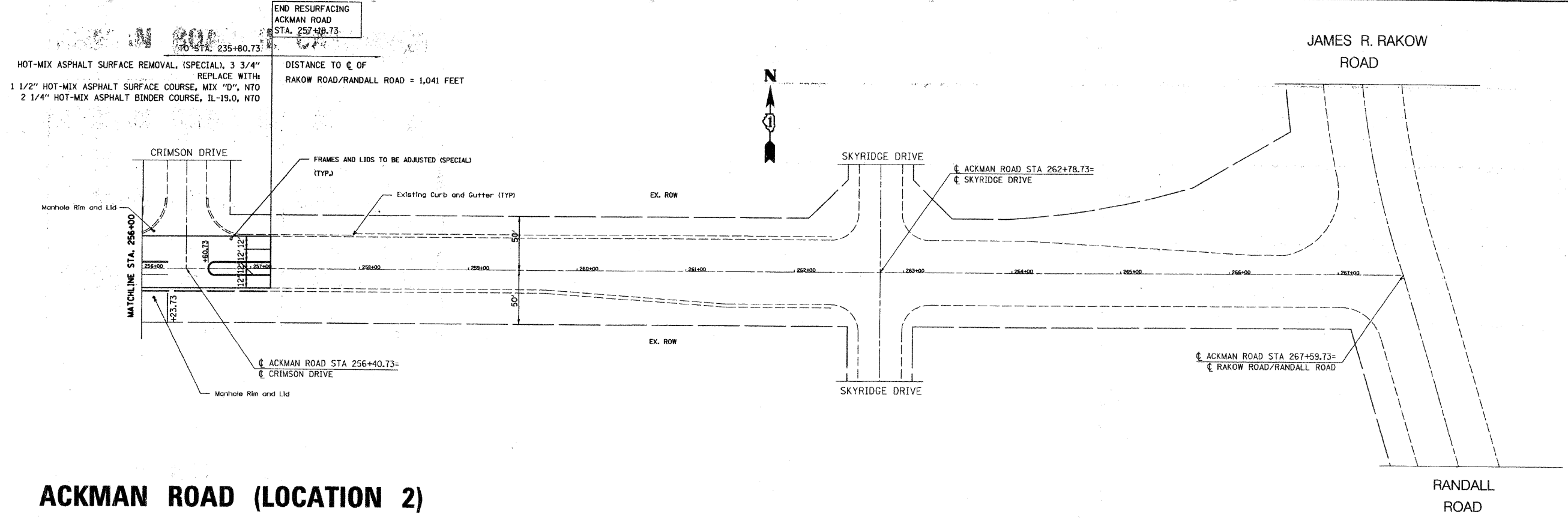
ACKMAN ROAD (LOCATION 2)

NOTES:

- 1) FOR PAVEMENT MARKING DETAILS, FOLLOW DISTRICT 1 STANDARD TC-13 "DISTRICT ONE TYPICAL PAVEMENT MARKINGS", WHERE APPLICABLE.
- 2) RECESSED REFLECTIVE PAVEMENT MARKERS SHALL FOLLOW STANDARD 781001-03 TYPICAL APPLICATIONS RAISED REFLECTIVE PAVEMENT MARKERS. SEE "RECESSED PAVEMENT MARKER DETAIL" FOR INSTALLATION.

*FAU 3873 (ACKMAN ROAD) AND FAU 4066 (MAIN STREET)

FILE NAME = #FILEL#	USER NAME = #USER#	DESIGNED -	REVISED -	McHENRY COUNTY DIVISION OF TRANSPORTATION ACKMAN ROAD AND MAIN STREET LAPP IMPROVEMENTS	ACKMAN ROAD (LOCATION 2) PROPOSED PLAN			F.A. RTE.	SECTION	COUNTY	TOTAL SHEETS	SHEET NO.	
	PLOT SCALE = #SCALE#	DRAWN -	REVISED -		SCALE: 1"=50'	SHEET NO.	OF	SHEETS	STA.	TO STA.	McHENRY	19	9
	PLOT DATE = #DATE#	CHECKED -	REVISED -					CONTRACT NO. 63130					
		DATE -	REVISED -					FED. ROAD DIST. NO. ILLINOIS FED. AID PROJECT					



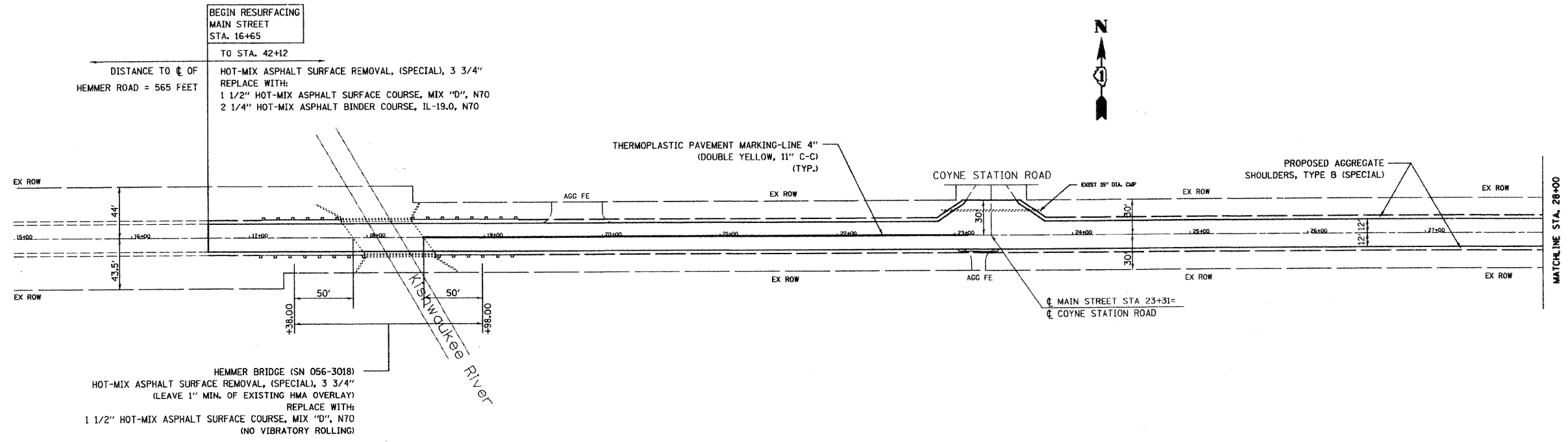
ACKMAN ROAD (LOCATION 2)

NOTES:

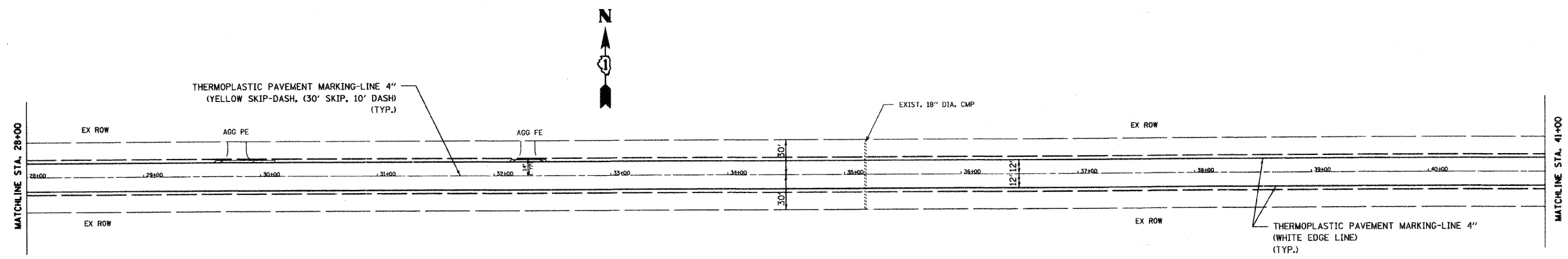
- 1) FOR PAVEMENT MARKING DETAILS, FOLLOW DISTRICT 1 STANDARD TC-13 "DISTRICT ONE TYPICAL PAVEMENT MARKINGS", WHERE APPLICABLE.
- 2) RECESSED REFLECTIVE PAVEMENT MARKERS SHALL FOLLOW STANDARD 781001-03 TYPICAL APPLICATIONS RAISED REFLECTIVE PAVEMENT MARKERS. SEE "RECESSED PAVEMENT MARKER DETAIL" FOR INSTALLATION.

*FAU 3973 (ACKMAN ROAD) AND FAU 4066 (MAIN STREET)

FILE NAME =	USER NAME = #USER#	DESIGNED -	REVISED -	McHENRY COUNTY DIVISION OF TRANSPORTATION ACKMAN ROAD AND MAIN STREET LAPP IMPROVEMENTS	ACKMAN ROAD (LOCATION 2) PROPOSED PLAN			F.A. RTE.	SECTION	COUNTY	TOTAL SHEETS	SHEET NO.
#FILE#	PLOT SCALE = #SCALE#	DRAWN -	REVISED -					•	09-00360-00-RS	McHENRY	19	10
	PLOT DATE = #DATE#	CHECKED -	REVISED -		SCALE: 1"=50' SHEET NO. OF SHEETS STA. TO STA.			CONTRACT NO. 63130				
		DATE -	REVISED -		FED. ROAD DIST. NO. ILLINOIS FED. AID PROJECT							



MAIN STREET



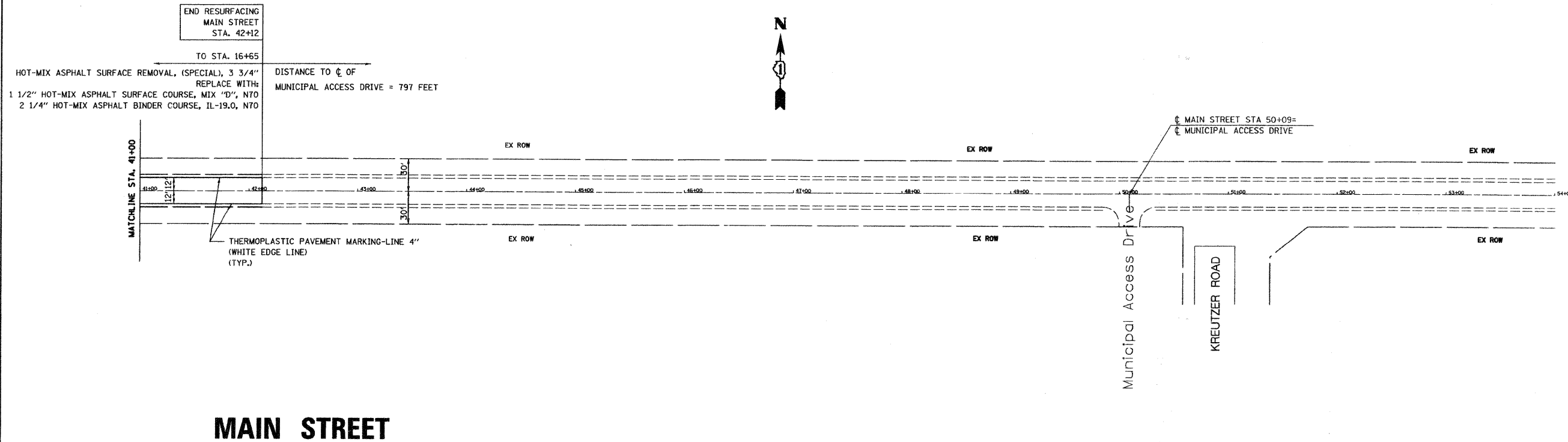
MAIN STREET

NOTES:

- 1) FOR PAVEMENT MARKING DETAILS, FOLLOW DISTRICT 1 STANDARD TC-13 "DISTRICT ONE TYPICAL PAVEMENT MARKINGS", WHERE APPLICABLE.
- 2) RECESSED REFLECTIVE PAVEMENT MARKERS SHALL FOLLOW STANDARD 781001-03 TYPICAL APPLICATIONS RAISED REFLECTIVE PAVEMENT MARKERS. SEE "RECESSED PAVEMENT MARKER DETAIL" FOR INSTALLATION.

•FAU 3873 (ACKMAN ROAD) AND FAU 4066 (MAIN STREET)

FILE NAME = #FILE#	USER NAME = #USER#	DESIGNED -	REVISED -	McHENRY COUNTY DIVISION OF TRANSPORTATION ACKMAN ROAD AND MAIN STREET LAPP IMPROVEMENTS	MAIN STREET PROPOSED PLAN			F.A. RTE.	SECTION	COUNTY	TOTAL SHEETS	SHEET NO.
	PLOT SCALE = #SCALE#	DRAWN -	REVISED -					•	09-00360-00-RS	McHENRY	19	11
PLOT DATE = #DATE#	CHECKED -	DATE -	REVISED -	SCALE: 1"=50'	SHEET NO.	OF	SHEETS	STA.	TO STA.	CONTRACT NO. 63130		
											FED. ROAD DIST. NO. ILLINOIS FED. AID PROJECT	



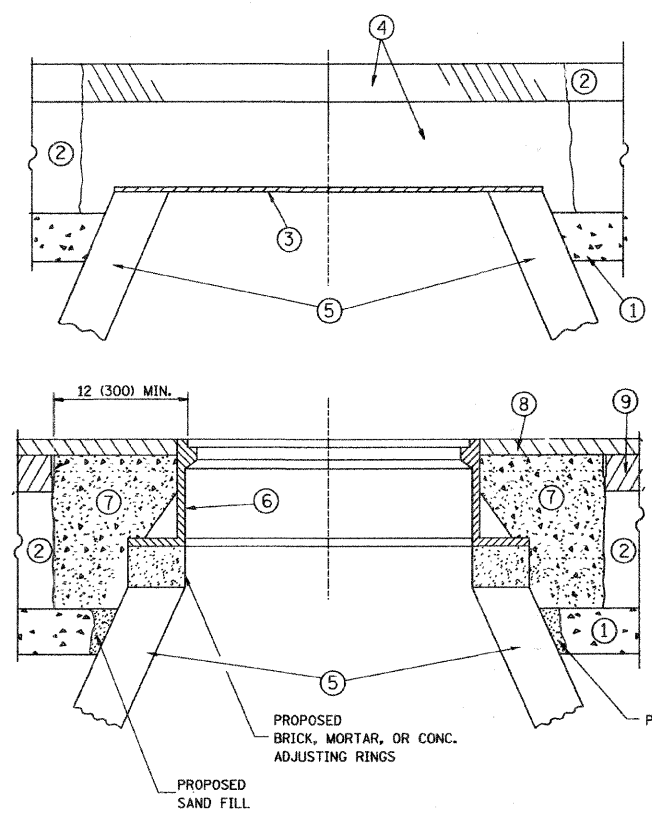
MAIN STREET

NOTES:

- 1) FOR PAVEMENT MARKING DETAILS, FOLLOW DISTRICT 1 STANDARD TC-13 "DISTRICT ONE TYPICAL PAVEMENT MARKINGS", WHERE APPLICABLE.
- 2) RECESSED REFLECTIVE PAVEMENT MARKERS SHALL FOLLOW STANDARD 781001-03 TYPICAL APPLICATIONS RAISED REFLECTIVE PAVEMENT MARKERS. SEE "RECESSED PAVEMENT MARKER DETAIL" FOR INSTALLATION.

*FAU 3873 (ACKMAN ROAD) AND FAU 4066 (MAIN STREET)

FILE NAME = *FILEL*	USER NAME = *USER*	DESIGNED -	REVISED -	McHENRY COUNTY DIVISION OF TRANSPORTATION ACKMAN ROAD AND MAIN STREET LAPP IMPROVEMENTS	MAIN STREET PROPOSED PLAN		F.A. RTE.	SECTION	COUNTY	TOTAL SHEETS	SHEET NO.	
	PLOT SCALE = *SCALE*	DRAWN -	REVISED -					09-00360-00-RS	McHENRY	19	12	
	PLOT DATE = *DATE*	CHECKED -	REVISED -		SCALE: 1"=50'	SHEET NO. OF SHEETS	STA. TO STA.	CONTRACT NO. 63130				
		DATE -	REVISED -					FED. ROAD DIST. NO.	ILLINOIS FED. AID PROJECT			



CONSTRUCTION PROCEDURES

STAGE 1 (BEFORE PAVEMENT MILLING)

- A) REMOVE A MINIMUM OF 12 (300) OF THE PAVEMENT FROM AROUND THE STRUCTURE.
- B) REMOVE THE EXISTING FRAME AND LID FROM THE STRUCTURE.
- C) COVER THE STRUCTURE OPENING WITH A 36 (900) DIAMETER METAL PLATE.
- D) BACKFILL WITH CRUSHED STONE AND A MINIMUM 1/2 (40) THICK HMA SURFACE MIX APPROVED BY THE ENGINEER.

STAGE 2 (AFTER PAVEMENT MILLING)

- A) REMOVE THE HMA SURFACE MIX AND CRUSHED STONE.
- B) INSTALL THE FRAME AND LID; ADJUST THE FRAME TO ITS FINAL SURFACE ELEVATION.
- C) THE SURROUNDING SPACE SHALL BE FILLED WITH CLASS SI CONCRETE, OR HMA SURFACE COURSE OR HMA BINDER COURSE TO THE ELEVATION OF THE SURFACE OF THE EXISTING BASE COURSE OR THE BINDER COURSE.

THE PROCEDURE EXPLAINED ABOVE SHALL CONFORM TO THE APPLICABLE PORTIONS OF SECTIONS 353, 406, 602, AND 603 OF THE STANDARD SPECIFICATIONS.

LEGEND

- ① SUB-BASE GRANULAR MATERIAL
- ② EXISTING PAVEMENT
- ③ 36 (900) DIAMETER METAL PLATE
- ④ PROPOSED CRUSHED STONE AND HMA SURFACE MIX
- ⑤ EXISTING STRUCTURE
- ⑥ FRAME AND LID (SEE NOTES)
- ⑦ CLASS SI CONCRETE, HMA SURFACE COURSE OR HMA BINDER COURSE
- ⑧ PROPOSED HMA SURFACE COURSE
- ⑨ PROPOSED HMA BINDER COURSE

LOCATION OF STRUCTURES:

THE CONTRACTOR WILL BE REQUIRED TO KEEP A RECORD OF THE LOCATIONS OF THE BURIED STRUCTURES ACCORDING TO THE STATION AND DISTANCE LEFT OR RIGHT OF THE CENTERLINE OF PAVEMENT. UPON COMPLETION OF THE WORK, THE CONTRACTOR WILL DELIVER THE RECORD TO THE ENGINEER.

BASIS OF PAYMENT:

THIS WORK WILL BE PAID FOR AT THE CONTRACT UNIT PRICE PER EACH FOR "FRAMES AND LIDS TO BE ADJUSTED, SPECIAL" NEW FRAMES AND LIDS, WHEN SPECIFIED, WILL BE PAID FOR SEPARATELY.

NOTES:

EXISTING BROKEN FRAMES AND LIDS SHALL BE REMOVED AND DISPOSED OF BY THE CONTRACTOR AND SHALL BE REPLACED AS DIRECTED BY THE ENGINEER. REPLACEMENT FRAMES AND LIDS WILL BE PAID FOR IN ACCORDANCE WITH ARTICLE 109.04 OF THE STANDARD SPECIFICATIONS UNLESS A SEPARATE PAY ITEM HAS BEEN PROVIDED.

IF THE EXISTING LIDS ARE OPEN, THE FRAME WILL BE ADJUSTED TO THE ELEVATION OF THE MILLED PAVEMENT SURFACE PRIOR TO THE MILLING OPERATION. THE FRAME WILL NOT BE REMOVED AND COVERED BY THE METAL PLATE.

CITY OF CHICAGO CASTINGS ARE THE PROPERTY OF THE CITY AND THE CONTRACTOR SHALL NOTIFY THE CITY FOR REMOVAL AND DISPOSITION OF THE CASTINGS.

THE METAL PLATE USED TO COVER THE STRUCTURE SHALL REMAIN THE PROPERTY OF THE CONTRACTOR.

WHEN STRUCTURES ARE TO BE ADJUSTED OR RECONSTRUCTED, THE LOWERING AND RAISING OF THE FRAMES AND LIDS WILL NOT BE PAID FOR SEPARATELY BUT WILL BE INCLUDED IN THE COST OF THE CORRESPONDING PAY ITEM.

DETAILS FOR FRAMES AND LIDS ADJUSTMENT WITH MILLING

ALL DIMENSIONS ARE IN INCHES (MILLIMETERS) UNLESS OTHERWISE SHOWN

*FAU 3873 (ACKMAN ROAD) AND FAU 4066 (MAIN STREET)

FILE NAME =	USER NAME = #USER#	DESIGNED - R. SHAH	REVISED - R. SHAH 03-10-95	STATE OF ILLINOIS DEPARTMENT OF TRANSPORTATION	DETAILS FOR FRAMES AND LIDS ADJUSTMENT WITH MILLING		F.A. - RTE.	SECTION	COUNTY	TOTAL SHEETS	SHEET NO.	
#FILEL#		DRAWN -	REVISED - A. ABBAS 03-21-97		SCALE: NONE	SHEET NO. 1 OF 1 SHEETS	STA.	09-00360-00-RS	MCHENRY	19	13	
		CHECKED -	REVISED - R. WIJEDMAN 05-14-04				TO STA.	BD600-03 (BD-8)				CONTRACT NO. 63130
		PLOT DATE = #DATE#	DATE - 10-25-94		REVISED - R. BORO 01-01-07			FED. ROAD DIST. NO. 1 (ILLINOIS) FED. AID PROJECT				

VARIABLE - TO MEET EXISTING DIMENSIONS AND FIELD CONDITIONS (SEE NOTE ②)

PROP. CONC. CURB OR CURB AND GUTTER REPLACEMENT IN ACCORDANCE WITH STATE STANDARD 606001. (SEE NOTE ②)

SAW CUT FULL DEPTH - INCLUDED IN THE COST OF SIDEWALK, DRIVEWAY OR MEDIAN SURFACE REMOVAL PAY ITEM.

EXISTING OR PROPOSED HMA SURFACE (IF APPLICABLE)

SEE STATE STANDARD 606001

18" (450) MAX.

1/4" (5) **

EXISTING SIDEWALK, DRIVEWAY, MEDIAN SURFACE OR GROUND.

PROPOSED SIDEWALK, DRIVEWAY PAVEMENT, MEDIAN SURFACE OR SALT TOLERANT SOD AND TOP SOIL, 4" (100) SOD RESTORATION (SEE NOTE ①).

EXISTING CONCRETE PAVEMENT, CONCRETE BASE COURSE OR FLEXIBLE PAVEMENT

3" (75) MIN.

SUITABLE BACKFILL MATERIAL (INCLUDED IN THE COST OF CURB OR CURB AND GUTTER REMOVAL AND REPLACEMENT)

PROPOSED 3/4" (20) PREFORMED EXPANSION JOINT AT CONCRETE SIDEWALKS, DRIVEWAYS, AND MEDIANS. (INCLUDED IN THE COST OF CURB OR CURB AND GUTTER REMOVAL AND REPLACEMENT.)

* 3" (75) MINIMUM FROM TOP AND BOTTOM OF THE CONCRETE PAVEMENT OR BASE COURSE.

** IF THE FINAL SURFACE OF THE PAVEMENT IS CONCRETE, THE GUTTER IS TO BE FLUSH WITH THE PAVEMENT.

NOTE: ① SIDEWALK, DRIVEWAY PAVEMENT OR MEDIAN SURFACE SHALL BE SIMILAR TO THE MATERIAL BEING REMOVED AND WILL BE PAID FOR SEPARATELY.

SALT TOLERANT SOD AND TOP SOIL, 4" (100) RESTORATION WILL NOT BE PAID FOR SEPARATELY, BUT SHALL BE INCLUDED IN THE COST OF CURB OR CURB AND GUTTER REMOVAL AND REPLACEMENT.

② CURB OR CURB AND GUTTER REPLACEMENT SHALL MATCH THE SHAPE OF THE EXISTING CURB OR CURB AND GUTTER UNLESS OTHERWISE SPECIFIED.

③ FOR CURB OR CURB AND GUTTER REMOVAL AND REPLACEMENT ADJACENT TO FLEXIBLE PAVEMENT DELETE EPOXY COATED TIE BARS.

④ LONGITUDINAL BARS, IF ENCOUNTERED IN THE EXISTING CURB OR CURB AND GUTTER, ARE NOT TO BE REPLACED. CUTTING AND REMOVING LONGITUDINAL BARS SHALL BE INCLUDED IN THE COST OF CURB OR CURB AND GUTTER REMOVAL AND REPLACEMENT.

⑤ THE COST OF HMA SURFACE REMOVAL IN THE EXISTING GUTTER FLAG SHALL BE INCLUDED IN THE COST OF THE CURB AND GUTTER REMOVAL AND REPLACEMENT.

⑥ THE REMOVAL AND REPLACEMENT OF THE EXISTING CURB OR CURB AND GUTTER SHALL BE DONE IN ACCORDANCE WITH THE APPLICABLE PORTIONS OF SECTION 440 AND 606 OF THE STANDARD SPECIFICATIONS.

⑦ THE LOCATIONS OF REMOVAL AND REPLACEMENT OF EXISTING CURB OR CURB AND GUTTER SHALL BE DETERMINED BY THE RESIDENT ENGINEER AT THE TIME OF CONSTRUCTION.

UNSUITABLE SUB-BASE MATERIAL TO BE REMOVED, IF DIRECTED BY THE ENGINEER, SHALL BE REPLACED WITH EITHER SUB-BASE GRANULAR MATERIAL, TYPE B OR ADDITIONAL THICKNESS OF CONCRETE.

REMOVAL AND REPLACEMENT 4" (100) OR LESS IS INCLUDED IN THE COST OF CURB OR CURB AND GUTTER REMOVAL AND REPLACEMENT.

REMOVAL AND REPLACEMENT IN EXCESS OF 4" (100) WILL BE PAID FOR IN ACCORDANCE WITH ARTICLE 109.04 OF THE STANDARD SPECIFICATIONS.

PROPOSED #6 (20) EPOXY COATED TIE BARS 24" (600) LONG AT 24" (600) CENTERS WILL NOT BE PAID FOR SEPARATELY. DELETE EPOXY COATED TIE BARS IF EXISTING TIE BARS ARE USABLE AS DETERMINED BY THE ENGINEER. (SEE NOTE ③).

BASIS OF PAYMENT:

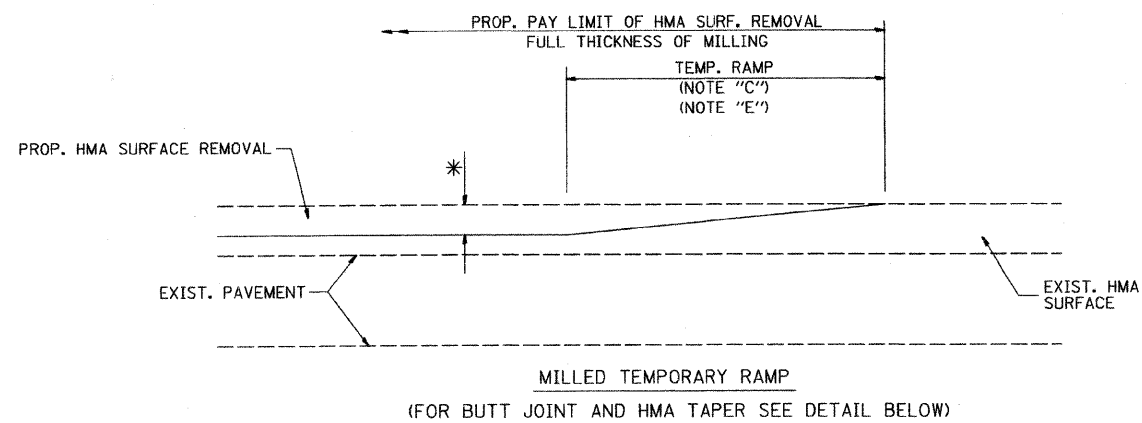
THIS WORK WILL BE PAID FOR AT THE CONTRACT UNIT PRICE PER FOOT (METER) FOR "CURB REMOVAL AND REPLACEMENT" OR "COMBINATION CONCRETE CURB AND GUTTER REMOVAL AND REPLACEMENT".

CURB OR CURB AND GUTTER REMOVAL AND REPLACEMENT

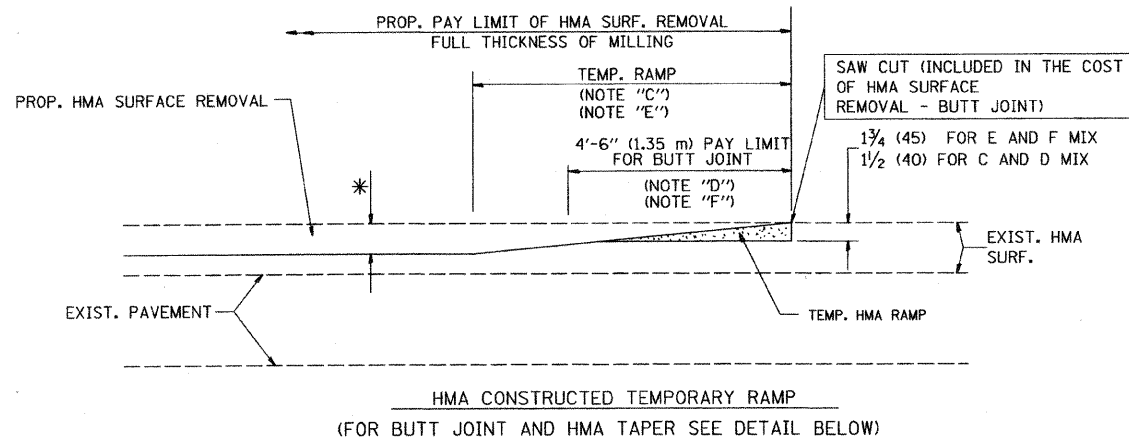
ALL DIMENSIONS ARE IN INCHES (MILLIMETERS) UNLESS OTHERWISE SHOWN.

*FAU 3873 (ACKMAN ROAD) AND FAU 4066 (MAIN STREET)

FILE NAME = #FILL#	USER NAME = #USER#	DESIGNED - A. HOUSEH	REVISED - R. SHAH 10-03-96	STATE OF ILLINOIS DEPARTMENT OF TRANSPORTATION	CURB OR CURB AND GUTTER REMOVAL AND REPLACEMENT			F.A. RTE.	SECTION	COUNTY	TOTAL SHEETS	SHEET NO.
	PROJECT SCALE = #SCALE#	DRAWN -	REVISED - A. ABBAS 03-21-97		09-00360-00 RS	McHENRY	19	14				
	CHECKED -	REVISED - M. GOMEZ 01-22-01	REVISED - R. BORO 01-01-07		BD600-06 (BD-24)		CONTRACT NO. 63130					
	PLOT DATE = #DATE#	DATE - 03-11-94			FED. ROAD DIST. NO. 1 [ILLINOIS] FED. AID PROJECT							
					SCALE: NONE	SHEET NO. 1 OF 1 SHEETS	STA.	TO STA.				

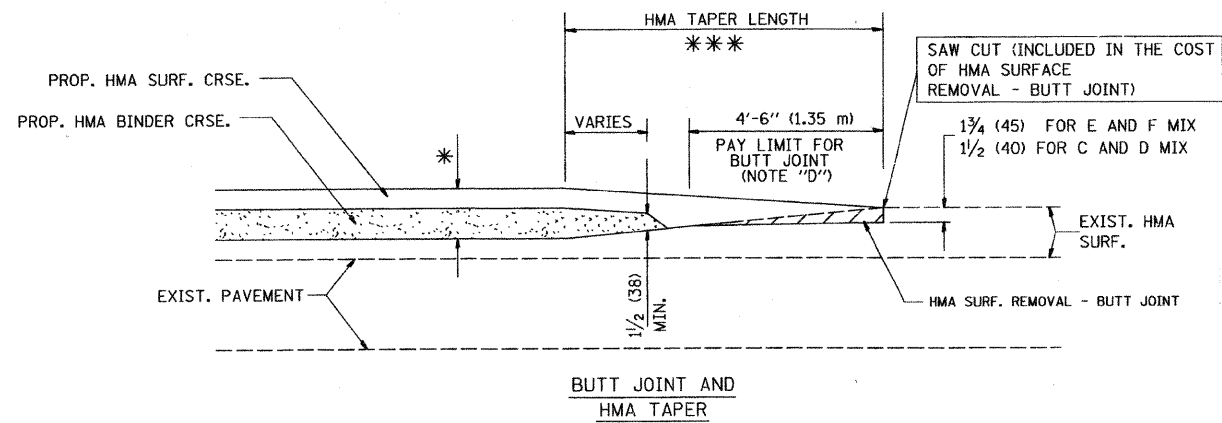


OPTION 1

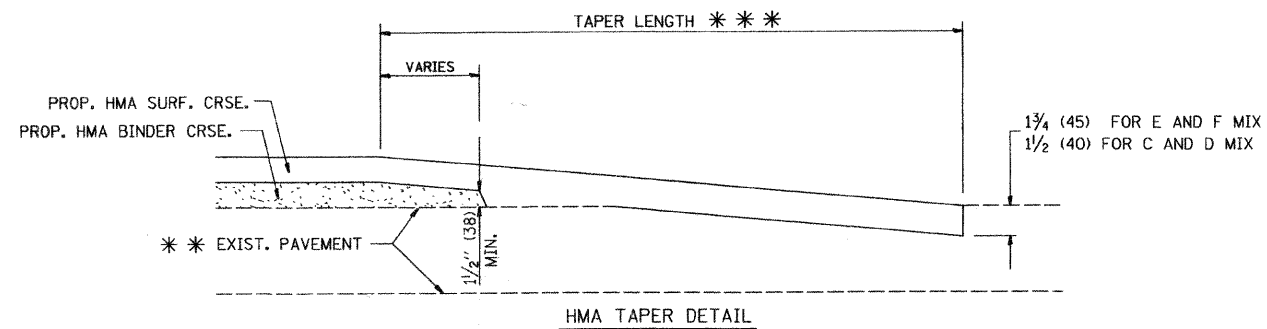
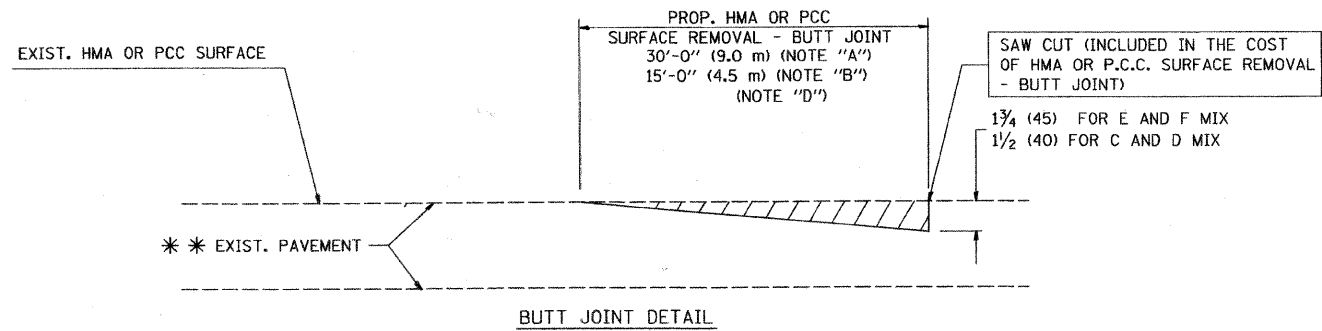


OPTION 2

TYPICAL TEMPORARY RAMP



TYPICAL BUTT JOINT AND HMA TAPER FOR MILLING AND RESURFACING



TYPICAL BUTT JOINT AND HMA TAPER FOR RESURFACING ONLY

*** PC CONCRETE, HMA OR HMA RESURFACED PAVEMENT.

NOTES

- A: MAINLINE ROADWAYS AND MAJOR SIDE ROADS.
 - B: MINOR SIDE ROADS.
 - C: THE TEMP. RAMP SHALL BE CONSTRUCTED IMMEDIATELY UPON REMOVAL OF THE EXISTING HMA SURFACE.
 - D: THE BUTT JOINT SHALL BE CONSTRUCTED IMMEDIATELY PRIOR TO PLACING THE PROPOSED HMA COURSES.
 - E: TAPER THE TEMP. RAMP AT A RATE OF 3'-0" (900 mm) PER 1 INCH (25 mm) OF MILLING THICKNESS.
 - F: INSTALLATION AND REMOVAL OF THE 4'-6" (1.35 m) TEMP. RAMP IS INCLUDED IN COST OF HMA SURFACE REMOVAL - BUTT JOINT
 - G: SEE ARTICLE 406.08 AND 406.14 OF THE STANDARD SPECIFICATIONS FOR "HMA AND/OR PCC SURFACE REMOVAL, BUTT JOINT".
- * SEE TYPICAL SECTIONS FOR MILLING THICKNESS.
- *** 20'-0" (6.1 m) PER 1 (25) RESURFACING (NOTE "A")
 10'-0" (3.0 m) PER 1 (25) RESURFACING (NOTE "B")

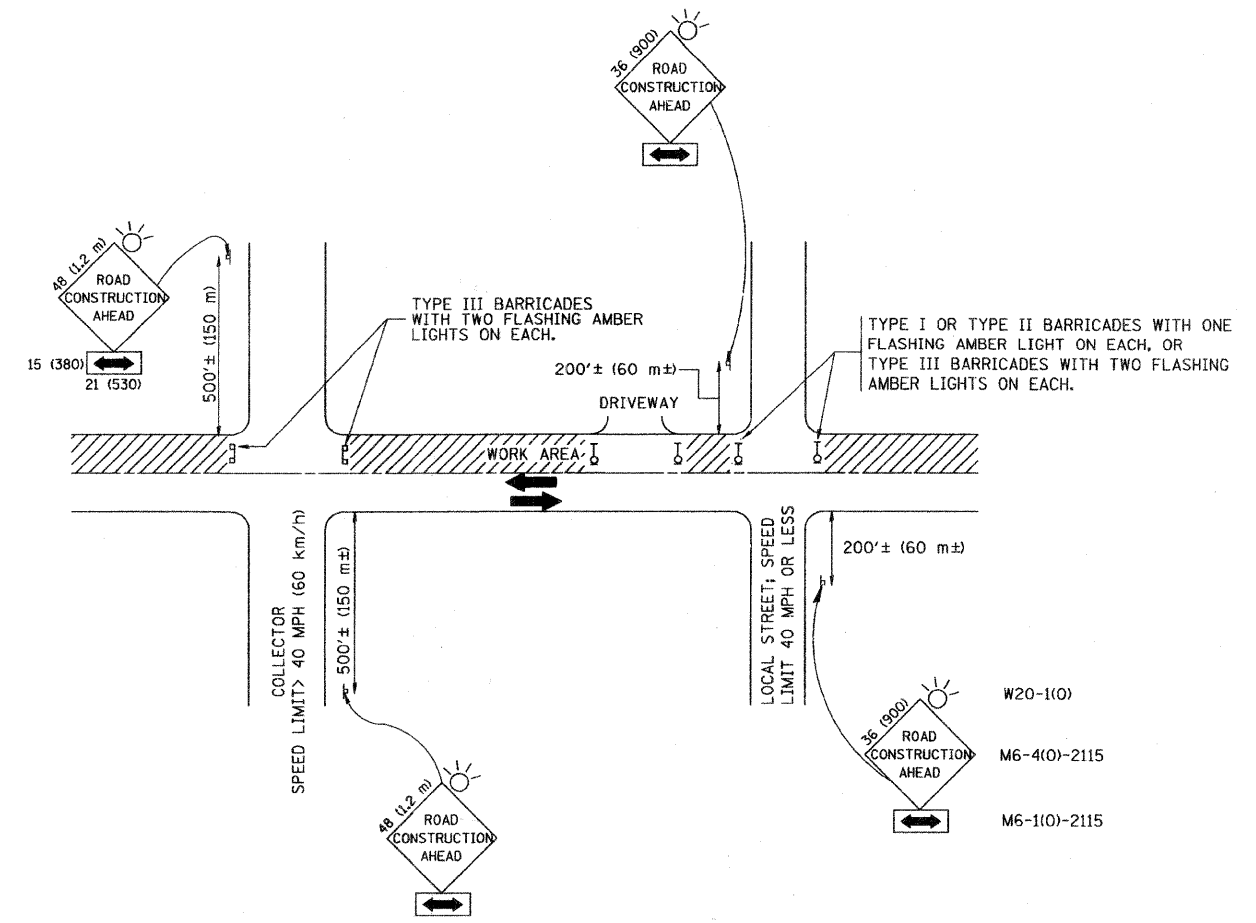
BASIS OF PAYMENT:

THE BUTT JOINT WILL BE PAID FOR AT THE CONTRACT UNIT PRICE PER SQUARE YARD (SQUARE METER) FOR "HOT-MIX ASPHALT SURFACE REMOVAL - BUTT JOINT" OR FOR "PORTLAND CEMENT CONCRETE SURFACE REMOVAL - BUTT JOINT".

ALL DIMENSIONS ARE IN INCHES (MILLIMETERS) UNLESS OTHERWISE SHOWN.

*FAU 3873 (ACKMAN ROAD) AND FAU 4066 (MAIN STREET)

FILE NAME =	USER NAME = #USER#	DESIGNED - M. DE YONG	REVISED - R. SHAH 10-25-94	STATE OF ILLINOIS DEPARTMENT OF TRANSPORTATION	BUTT JOINT AND HMA TAPER DETAILS			F.A.S. RTE.	SECTION	COUNTY	TOTAL SHEETS	SHEET NO.
		DRAWN -	REVISED - A. ABBAS 03-21-97		SCALE: NONE	SHEET NO. 1 OF 1 SHEETS	STA.	TO STA.	09-00360-00-RS	McHENRY	19	15
		CHECKED -	REVISED - M. GOMEZ 04-06-01					BD400-05 BD32		CONTRACT NO. 63130		
		DATE - 06-13-90	REVISED - R. BORO 01-01-07		FED. ROAD DIST. NO. 1 ILLINOIS FED. AID PROJECT							



TRAFFIC CONTROL AND PROTECTION FOR SIDE ROADS, INTERSECTIONS, AND DRIVEWAYS

NOTES:

- A. FOR NO LANE RESTRICTION ON THE SIDE ROAD OR DRIVEWAYS
- SIDE ROAD WITH A SPEED LIMIT OF 40 MPH (60 km/h) OR LESS AS SHOWN ON THE DRAWING AND AS DIRECTED BY THE ENGINEER:
 - ONE ROAD CONSTRUCTION AHEAD SIGN 36 x 36 (900x900) WITH A FLASHER AND FLAG MOUNTED ON IT APPROXIMATELY 200' (60 m) IN ADVANCE OF THE MAIN ROUTE.
 - THE CLOSED PORTION OF THE MAIN ROUTE SHALL BE PROTECTED BY BLOCKING WITH TYPE I, TYPE II OR TYPE III BARRICADES, 1/3 OF THE CROSS SECTION OF THE CLOSED PORTION.
 - SIDE ROAD WITH A SPEED LIMIT GREATER THAN 40 MPH (60 km/h) AS SHOWN ON THE DRAWING AND AS DIRECTED BY THE ENGINEER:
 - ONE ROAD CONSTRUCTION AHEAD SIGN 48 x 48 (1.2 m x 1.2 m) WITH A FLASHER MOUNTED ON IT APPROXIMATELY 500' (150 m) IN ADVANCE OF THE MAIN ROUTE.
 - THE CLOSED PORTION OF THE MAIN ROUTE SHALL BE PROTECTED BY BLOCKING WITH TYPE III BARRICADES, 1/2 OF THE CROSS SECTION OF THE CLOSED PORTION.
 - WHEN THE SIDE ROAD LIES BETWEEN THE BEGINNING OF THE MAINLINE SIGNING AND THE WORK ZONE, A SINGLE HEADED ARROW (M6-1) SHALL BE USED IN LIEU OF THE DOUBLE HEADED ARROW (M6-4).
- B. FOR A LANE CLOSURE ON A SIDE ROAD OR DRIVEWAY:
- USE APPLICABLE PORTIONS OF THE TYPICAL APPLICATION OF TRAFFIC CONTROL DEVICES (STD. 701501, STD. 701606 OR THE APPROPRIATE STANDARD). THE SPACING OF SIGNS AND BARRICADES SHALL BE ADJUSTED FOR FIELD CONDITIONS AS DIRECTED BY THE ENGINEER. THE DIRECTIONAL ARROW SHALL BE COVERED OR REMOVED WHEN NO LONGER CONSISTENT WITH THE SIDE ROAD LANE CLOSURE.
- C. ADVANCE WARNING SIGNS ARE TO BE OMITTED ON DRIVEWAY UNLESS OTHERWISE NOTED.
- D. THE TRAFFIC CONTROL AND PROTECTION FOR SIDE ROADS, INTERSECTIONS, AND DRIVEWAYS SHALL BE INCIDENTAL TO THE COST OF SPECIFIED TRAFFIC CONTROL STANDARDS OR ITEMS.

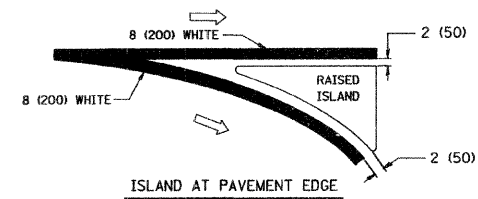
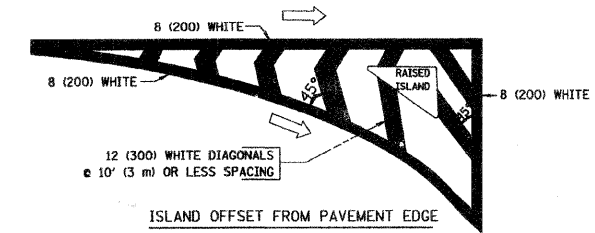
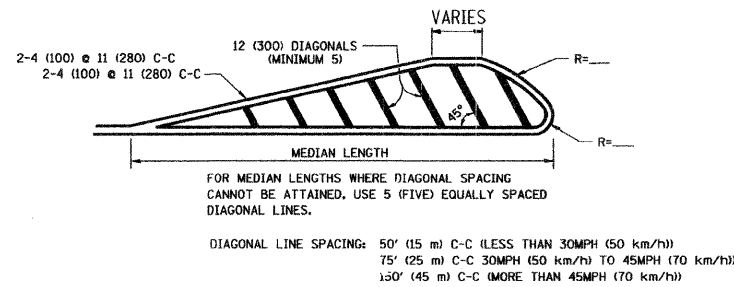
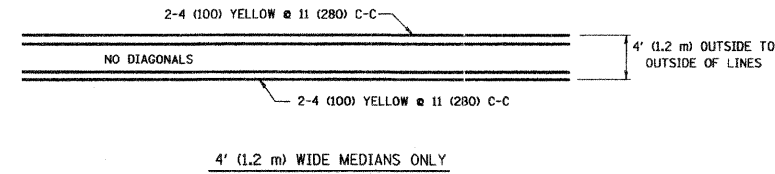
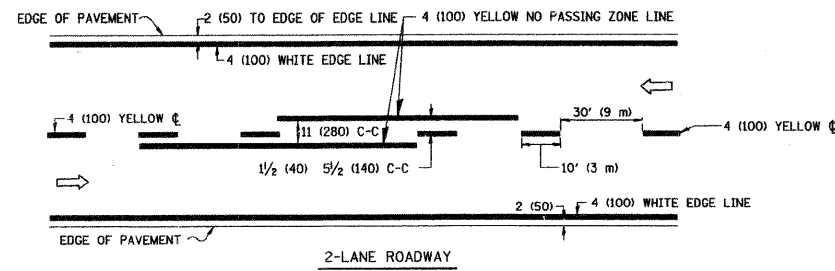
All dimensions are in millimeters (inches) unless otherwise shown.
 *FAU 3873 (ACKMAN ROAD) AND FAU 4066 (MAIN STREET)

FILE NAME =	USER NAME = #USER*	DESIGNED - LHA	REVISED - J. OBERLE 10-18-95
*FILE#		DRAWN -	REVISED - A. HOUSEH 03-06-96
	PLOT SCALE = #SCALE*	CHECKED -	REVISED - A. HOUSEH 10-15-96
	PLOT DATE = #DATE*	DATE - 06-89	REVISED - T. RAMMACHER 01-06-00

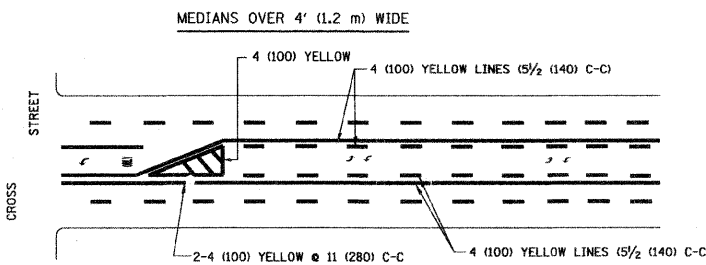
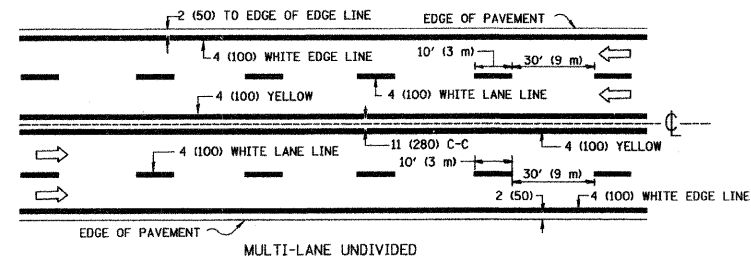
STATE OF ILLINOIS
 DEPARTMENT OF TRANSPORTATION

TRAFFIC CONTROL AND PROTECTION FOR SIDE ROADS, INTERSECTIONS, AND DRIVEWAYS			
SCALE: NONE	SHEET NO. 1 OF 1 SHEETS	STA.	TO STA.

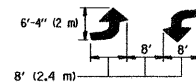
F.A. RTE.	SECTION	COUNTY	TOTAL SHEETS	SHEET NO.
*	09-00360-00-RS	MCHENRY	19	16
TC-10			CONTRACT NO. 63130	
FED. ROAD DIST. NO. 1 ILLINOIS FED. AID PROJECT				



TYPICAL ISLAND MARKING

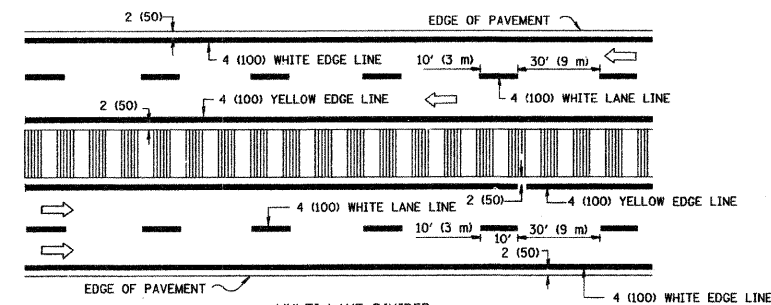


A MINIMUM OF TWO PAIRS OF TURN ARROWS SHALL BE USED, WHITE IN COLOR. ADDITIONAL PAIRS SHALL BE PLACED AT 200' (60 m) TO 300' (90 m) INTERVALS.



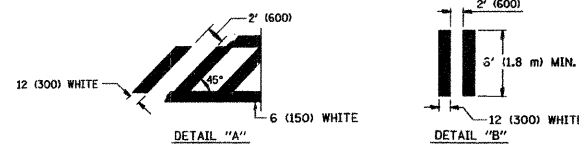
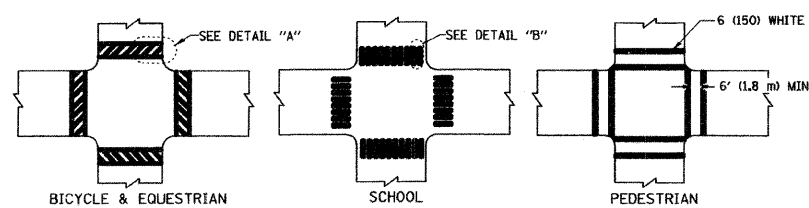
MEDIAN WITH TWO-WAY LEFT TURN LANE

TYPICAL PAINTED MEDIAN MARKING

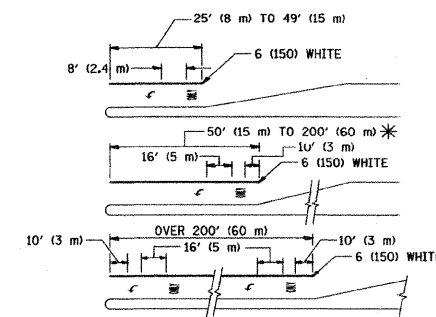


NOTE: MEDIANS WITH BARRIER CURB DO NOT REQUIRE AN EDGE LINE

TYPICAL LANE AND EDGE LINE MARKING



TYPICAL CROSSWALK MARKING



FULL SIZE LETTERS 8' (2.4 m) AND ARROWS SHALL BE USED.
 * AREA = 15.6 SQ. FT. (1.5 m²) ONLY AREA = 20.8 SQ. FT. (1.9 m²)
 * TURN LANES IN EXCESS OF 400' (120 m) IN LENGTH MAY HAVE AN ADDITIONAL SET OF ARROW - "ONLY" INSTALLED MIDWAY BETWEEN THE OTHER TWO SETS OF ARROW - "ONLY".

TYPICAL LEFT (OR RIGHT) TURN LANE

TYPICAL TURN LANE MARKING

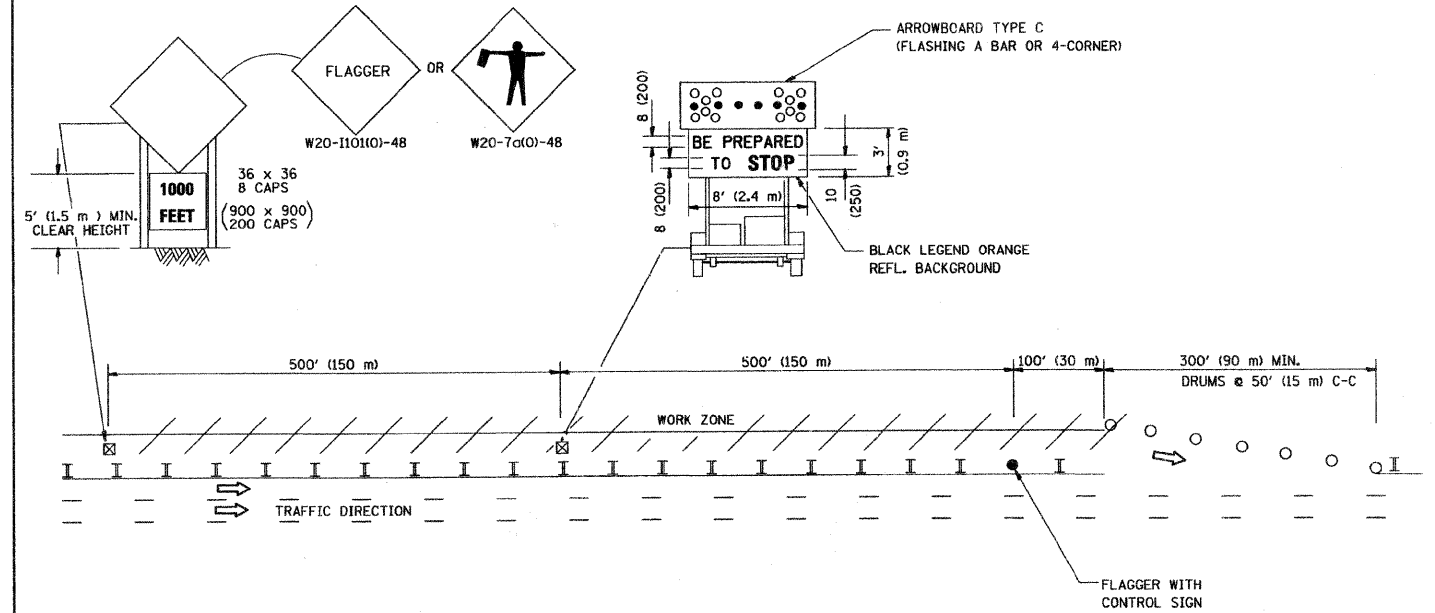
TYPE OF MARKING	WIDTH OF LINE	PATTERN	COLOR	SPACING / REMARKS
CENTERLINE ON 2 LANE PAVEMENT	4 (100)	SKIP-DASH	YELLOW	10' (3 m) LINE WITH 30' (9 m) SPACE
CENTERLINE ON MULTI-LANE UNDIVIDED PAVEMENT	2 @ 4 (100)	SOLID	YELLOW	11 (280) C-C
NO PASSING ZONE LINES FOR ONE DIRECTION FOR BOTH DIRECTIONS	4 (100) 2 @ 4 (100)	SOLID SOLID	YELLOW YELLOW	5/2 (140) C-C FROM SKIP-DASH CENTERLINE 11 (280) C-C OMIT SKIP-DASH CENTERLINE BETWEEN
LANE LINES	4 (100) 5 (125) ON FREEWAYS	SKIP-DASH SKIP-DASH	WHITE WHITE	10' (3 m) LINE WITH 30' (9 m) SPACE
DOTTED LINES (EXTENSIONS OF CENTER, LANE OR TURN LANE MARKINGS)	SAME AS LINE BEING EXTENDED	SKIP-DASH	SAME AS LINE BEING EXTENDED	2' (600) LINE WITH 6' (1.8 m) SPACE
EDGE LINES	4 (100)	SOLID	YELLOW-LEFT WHITE-RIGHT	OUTLINE MOUNTABLE MEDIANS IN YELLOW; EDGE LINES ARE NOT USED NEXT TO BARRIER CURB
TURN LANE MARKINGS	6 (150) LINE; FULL SIZE LETTERS & SYMBOLS (8' (2.4m))	SOLID	WHITE	SEE TYPICAL TURN LANE MARKING DETAIL
TWO WAY LEFT TURN MARKING	2 @ 4 (100) EACH DIRECTION 8' (2.4m) LEFT ARROW	SKIP-DASH AND SOLID IN PAIRS	YELLOW WHITE	10' (3 m) LINE WITH 30' (9 m) SPACE FOR SKIP-DASH 5/2 (140) C-C BETWEEN SOLID LINE AND SKIP-DASH LINE SEE TYPICAL TWO-WAY LEFT TURN MARKING DETAIL
CROSSWALK LINES (PEDESTRIAN) A. DIAGONALS (BIKE & EQUESTRIAN) B. LONGITUDINAL BARS (SCHOOL)	2 @ 6 (150) 12 (300) @ 45° 12 (300) @ 90°	SOLID SOLID SOLID	WHITE WHITE WHITE	NOT LESS THAN 6' (1.8 m) APART 2' (600) APART SEE TYPICAL CROSSWALK MARKING DETAILS.
STOP LINES	24 (600)	SOLID	WHITE	PLACE 4' (1.2 m) IN ADVANCE OF AND PARALLEL TO CROSSWALK, IF PRESENT. OTHERWISE, PLACE AT DESIRED STOPPING POINT, PARALLEL TO CROSSROAD CENTERLINE, WHERE POSSIBLE
PAINTED MEDIANS	2 @ 4 (100) WITH 12 (300) DIAGONALS @ 45° NO DIAGONALS USED FOR 4' (1.2 m) WIDE MEDIANS	SOLID	YELLOW TWO WAY TRAFFIC WHITE ONE WAY TRAFFIC	11 (280) C-C FOR THE DOUBLE LINE SEE TYPICAL PAINTED MEDIAN MARKING.
GORE MARKING AND CHANNELIZING LINES	8 (200) WITH 12 (300) DIAGONALS @ 45°	SOLID	WHITE	DIAGONALS: 15' (4.5 m) C-C (LESS THAN 30MPH (50 km/h)) 20' (6 m) C-C 30MPH (50 km/h) TO 45MPH (70 km/h) 30' (9 m) C-C (OVER 45MPH (70 km/h))
RAILROAD CROSSING	24 (600) TRANSVERSE LINES; "RR" IS 6' (1.8 m) LETTERS; 16 (400) LINE FOR "X"	SOLID	WHITE	SEE STATE STANDARD 780001 AREA OF: "R"=3.6 SQ. FT. (0.33 m ²) EACH "X"=54.0 SQ. FT. (5.0 m ²)
SHOULDER DIAGONALS	12 (300) @ 45°	SOLID	WHITE - RIGHT YELLOW - LEFT	50' (15 m) C-C (LESS THAN 30MPH (50 km/h)) 75' (25 m) C-C (30 MPH (50 km/h) TO 45MPH (70 km/h)) 150' (45 m) C-C (OVER 45MPH (70 km/h))

FOR FURTHER DETAILS ON PAVEMENT MARKING REFER TO STANDARD SPECIFICATIONS FOR ROAD AND BRIDGE CONSTRUCTION AND STATE STANDARD 780001.

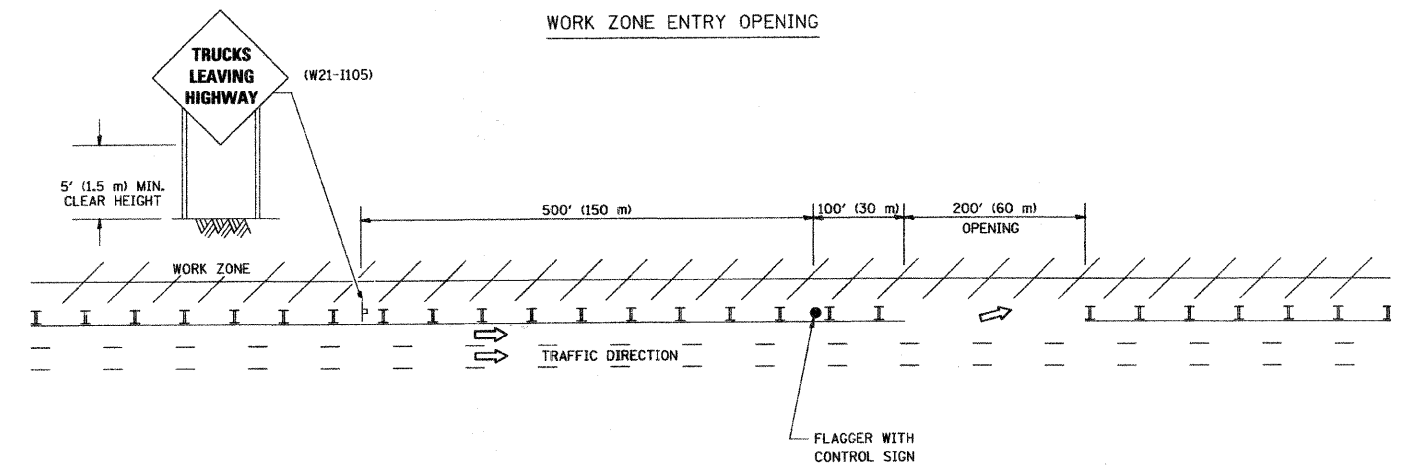
All dimensions are in inches (millimeters) unless otherwise shown.

SIGNING FOR FLAGGING OPERATIONS AT WORK ZONE OPENINGS

WORK ZONE EXIT OPENING



WORK ZONE ENTRY OPENING



NOTES:

1. The Arrowboard, the Flagger Ahead trailer mounted sign, and the Trucks Leaving Highway sign shall be removed or turned away from traffic and the exit and entry openings shall be closed when the flagging operation ceases.
2. Work Zone Exit Openings should be a minimum of one half mile apart.
3. Exiting the work zone at any place other than at a Work Zone Exit Opening will be prohibited.
4. All vehicles shall enter the work zone at entry openings, using their turn signals to warn motorists

ALL DIMENSIONS ARE IN INCHES (MILLIMETERS) UNLESS OTHERWISE SHOWN

*FAU 3873 (ACKMAN ROAD) AND FAU 4066 (MAIN STREET)

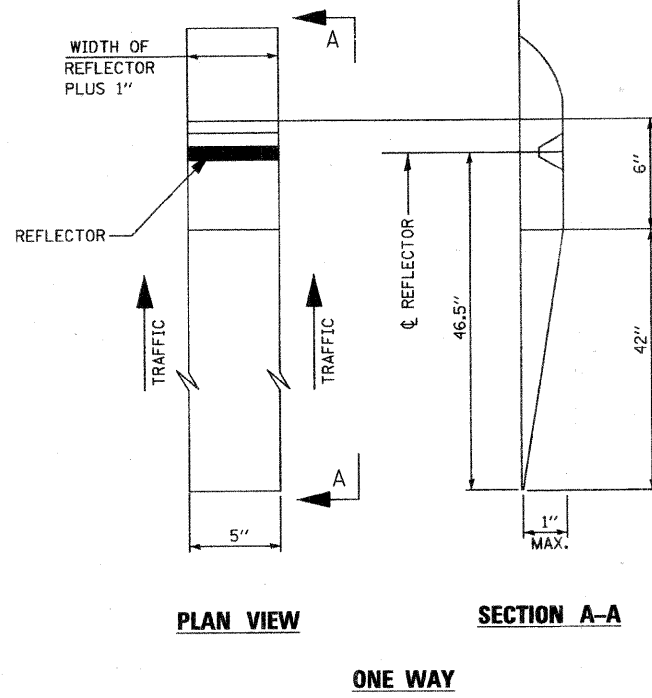
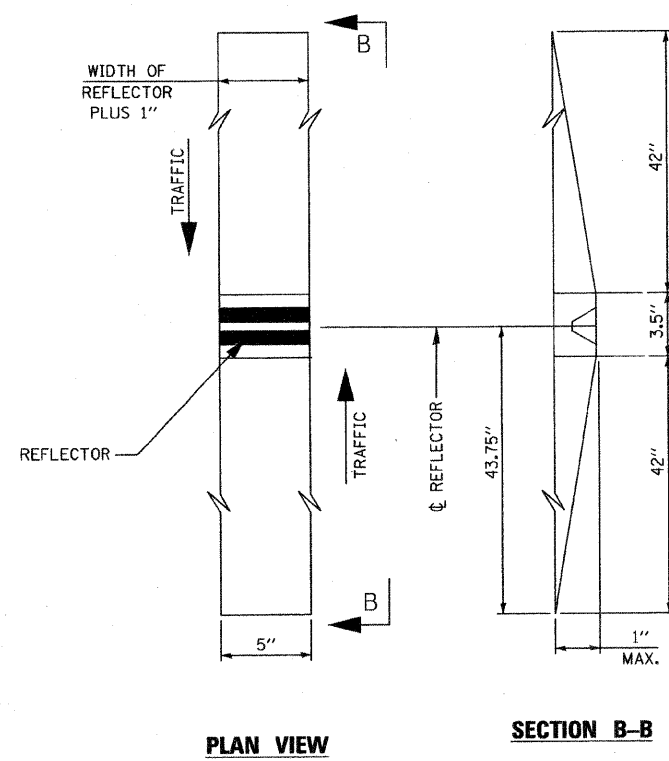
USER NAME = *USER*	DESIGNED -	REVISED - D.W.S. 08-98
	DRAWN -	REVISED - J.A.F. 04-03
PLOT SCALE = *SCALE*	CHECKED -	REVISED - J.A.F. 02-06
PLOT DATE = *DATE*	DATE -	REVISED - S.P.B. 01-07

STATE OF ILLINOIS
DEPARTMENT OF TRANSPORTATION

SIGNING FOR FLAGGING OPERATIONS
AT WORK ZONE OPENINGS

SCALE: NONE SHEET NO. 1 OF 1 SHEETS STA. TO STA.

F.A. RTE.	SECTION	COUNTY	TOTAL SHEETS	SHEET NO.
*	09-00360-00-RS	McHENRY	19	18
TC-18			CONTRACT NO. 63130	
FED. ROAD DIST. NO. 1 ILLINOIS FED. AID PROJECT				



RECESSED REFLECTIVE MARKERS

INSTALLATION NOTES:

1. SAWCUT IN DIMENSIONS SHOWN.
2. SAWCUT AREAS TO BE DRY AND FREE OF MATERIAL THAT ADVERSELY AFFECTS THE ADHESIVE BAND.
3. INSTALL THE REFLECTOR WITH AN APPROVED TWO-COMPONENT EPOXY ADHESIVE. EPOXY SHOULD NOT OBSCURE OR BLOCK THE LENS.
4. INSTALL TOP OF REFLECTOR 1/2 TO 3/4 INCH BELOW THE PAVEMENT SURFACE.
5. REFLECTOR SHALL BE 3M SERIES 290.

GENERAL NOTES:

1. INSTALLATION SHALL CONFORM TO IDOT HIGHWAY STANDARD 781001-03 (OR LATEST) FOR MARKER PLACEMENT.
2. IDOT STANDARD 781001-03 SHALL BE MODIFIED TO REFLECT IN RECESSED PAVEMENT MARKERS INSTEAD OF RAISED PAVEMENT MARKERS.

FILE NAME =	USER NAME = #USER#	DESIGNED -	REVISED -	McHENRY COUNTY DIVISION OF TRANSPORTATION	RECESSED PAVEMENT MARKER DETAIL			F.A. RTE.	SECTION	COUNTY	TOTAL SHEETS	SHEET NO.
#FILE#		DRAWN -	REVISED -		SCALE: NONE	SHEET NO.	OF	SHEETS	STA.	TO STA.	FED. ROAD DIST. NO.	ILLINOIS FED. AID PROJECT
		CHECKED -	REVISED -									
		DATE -	REVISED -									

*FAU 3873 (ACKMAN ROAD) AND FAU 4066 (MAIN STREET)

F.A. RTE.	SECTION	COUNTY	TOTAL SHEETS	SHEET NO.
•	09-00360-00-RS	McHENRY	19	19
CONTRACT NO. 63130				