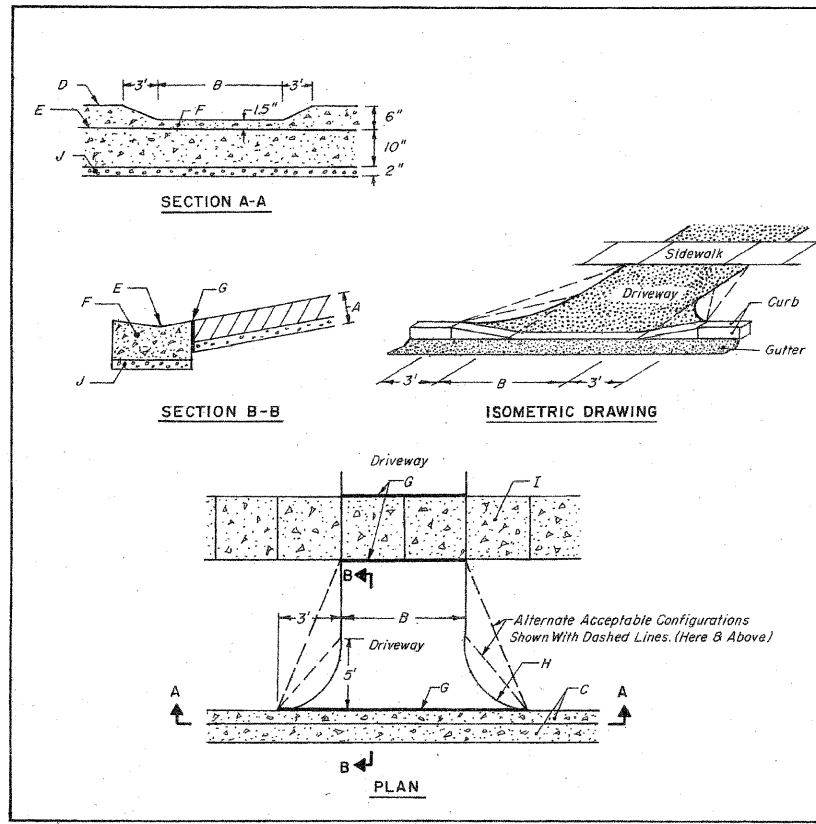


no.	date	by	ckd	description
-----	------	----	-----	-------------



**CONSTRUCTION NOTES**

- For Concrete Driveways, Min. 5" R.C.C. Over a Min. 2" Compacted Aggregate Base. For Asphalt Driveways, Min. 2" Bituminous Concrete Over a Min. 8" Compacted Aggregate Base.
- Min. Width 9' Max. 20'
- Curb & Gutter
- Top of Curb
- Flow Line of Gutter
- Depressed Type Curb & Gutter
- 3/4" Expansion Joint Required For Concrete Driveways Only.
- 5' Radius
- R.C.C. Sidewalk, See Notes 2 & 3.
- Min. 2" Aggregate Base

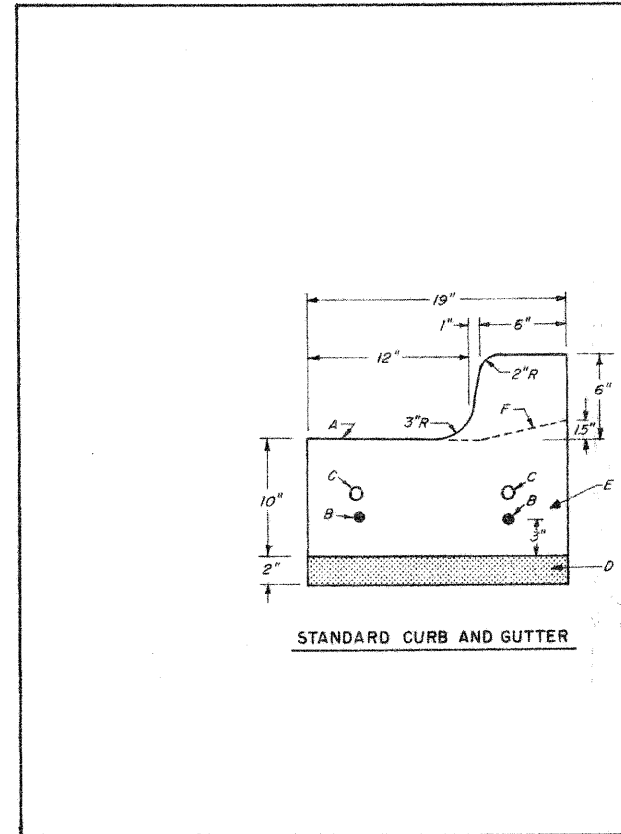
**GENERAL NOTES**

- For Concrete Driveways Wider Than 14', a Contraction Joint Shall be Located Along The Centerline of The Driveway.
- Sidewalk Shall be a Minimum of 5" Thick.
- A Minimum 6-Bag Mix Concrete Shall be Used For Concrete Driveways, Sidewalks, And Curb and Gutter.

**VILLAGE OF WESTMONT**  
**RESIDENTIAL DRIVEWAY**  
**DETAIL**

ISSUED: March 1988  
 REVISED: August 2002  
 August 2003

DWG. R-7-2



**CONSTRUCTION NOTES**

- Slope 3/4"/Ft.
- 2- #4 Bars Continuous, Optional.
- 2 Dowel Bars at Expansion Joints.
- Min. 2" Aggr. Base.
- Min. 6-Bag Mix Concrete.
- Depressed Curb Configuration.

**GENERAL NOTES**

- Standard Curb and Gutter Shall be Used For All New Construction. Roll-Type Curb and Gutter is Not Acceptable.
- Preformed Expansion Joints of 3/4" Thickness Shall be Spaced a Maximum of 40' Apart, and at All Radius Points and 4' Either Side of Inlets.
- Formed or Saw-Cut Contraction Joints Shall be Spaced a Maximum of 10' Apart and Filled with a Silicone Sealant.
- Concrete Barrier-Type Curb and Gutter Shall be Provided for All Parking Lots Accommodating Five (5) or More Parking Spaces.

**VILLAGE OF WESTMONT**  
**CURB AND GUTTER DETAIL**

ISSUED: March 1988  
 REVISED: August 2003

DWG. R-6-1

Millimeters  
 Scale For Micromiling  
 Inches

**Burns & McDonnell**  
SINCE 1899

date OCTOBER 29, 2008	detailed D. CHAVEZ
designed M. BERENA	checked A. BRYANT

**WESTMONT**  
ILLINOIS

VILLAGE OF WESTMONT  
 PROPOSED 2008 CMAQ  
 SIDEWALK PROJECT  
 MISCELLANEOUS DETAILS (2 OF 3)

project 48924	contract 63132
drawing <b>D102</b>	rev.
sheet 10	of 12 sheets

file 48924\_DETAILS\_2