

DESCRIPTION OF WORK

CONTRACTOR SHALL TAKE FULL MAINTENANCE OF EXISTING LIGHTING CONTROLLER & LIGHTING SYSTEM DURING CONSTRUCTION OF THIS CONTRACT. THIS WORK SHALL INCLUDE MAINTENANCE OF LIGHTING UNITS, CABLE RUNS AND LIGHTING CONTROLS. IN CASE OF A POLE KNOCKDOWN OR EQUIPMENT DAMAGED BY EITHER THE MOTORING PUBLIC OR CONTRACTOR OPERATIONS, THE CONTRACTOR SHALL CLEAR AND RESTORE THE EXISTING SYSTEM TO ORIGINAL CONDITION (SEE CONTRACT SPECIFICATIONS).

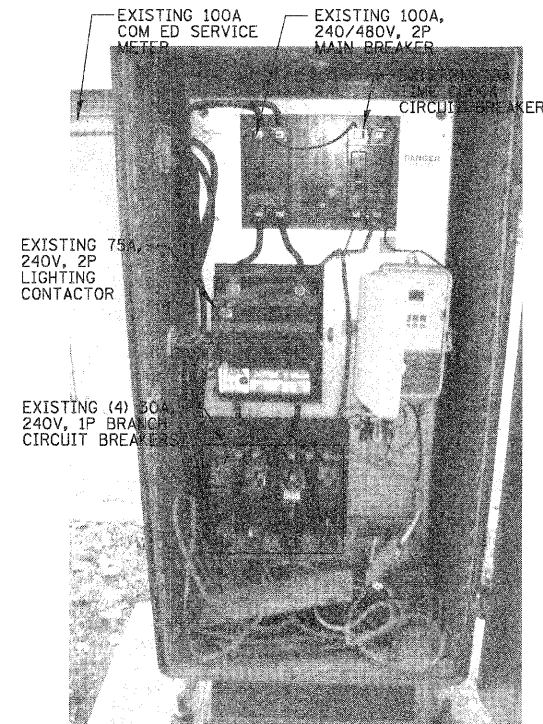
PROPOSED LIGHTING SHALL BE CONNECTED TO EXISTING LIGHTING CIRCUITS, AS SHOWN ON THE PLANS. NO WORK IS PROPOSED TO THIS CONTROLLER, IT IS SHOWN FOR INFORMATIONAL PURPOSES ONLY.

LIGHTING CONTROLLER LOADS	
DESCRIPTION OF LOAD	LOAD (AMPS)
REV. BRANCH CKT NO. 2	8.5 A
REV. BRANCH CKT NO. 3	8.5 A
REV. BRANCH CKT NO. 5	8.5 A
TOTAL LOAD ON EX. CONTROLLER "E"	25 A

NOTE: TABULATED LOADS INCLUDE PROPOSED LIGHT POLES.

EXISTING LIGHTING CONTROLLER "E"

LOCATED ON SOUTH SIDE OF LEHMER AVE. BETWEEN FERDINAND AVE. & BELOIT AVE.



DESCRIPTION OF WORK

CONTRACTOR SHALL TAKE PARTIAL MAINTENANCE OF EXISTING LIGHTING CONTROLLER, CIRCUIT THAT IS AFFECTED, DURING CONSTRUCTION OF THIS CONTRACT. THIS WORK SHALL INCLUDE MAINTENANCE OF LIGHTING UNITS, CABLE RUNS AND LIGHTING CONTROLS. IN CASE OF A POLE KNOCKDOWN OR EQUIPMENT DAMAGED BY EITHER THE MOTORING PUBLIC OR CONTRACTOR OPERATIONS, THE CONTRACTOR SHALL CLEAR AND RESTORE THE EXISTING SYSTEM TO ORIGINAL CONDITION (SEE CONTRACT SPECIFICATIONS).

PROPOSED LIGHTING SHALL BE CONNECTED TO EXISTING LIGHTING CIRCUITS, AS SHOWN ON THE PLANS. NO WORK IS PROPOSED TO THIS CONTROLLER, IT IS SHOWN FOR INFORMATIONAL PURPOSES ONLY.

LIGHTING CONTROLLER LOADS	
DESCRIPTION OF LOAD	LOAD (AMPS)
REV. BRANCH CKT NO. 2	16 A
TOTAL LOAD ON EX. CONTROLLER "O"	40 A

NOTE: TABULATED LOADS INCLUDE PROPOSED LIGHT POLES.

EXISTING LIGHTING CONTROLLER "O"

LOCATED ON NORTH SIDE OF ADAMS ST. BETWEEN THOMAS AVE. & HANNAH AVE.

FILE NAME = N:\FORESTPARK\270081\Mech\LD1_070081.D	USER NAME = PRAZALAN	DESIGNED -	REVISED -	STATE OF ILLINOIS DEPARTMENT OF TRANSPORTATION	ROADWAY LIGHTING IMPROVEMENTS - JACKSON BLVD. LIGHTING DETAILS (1 OF 3)	F.A. RTE.	SECTION	COUNTY	TOTAL SHEETS	SHEET NO.
	SHT	DRAWN -	REVISED -			1462	07-00105-00-PV	COOK	49	28
	PLOT SCALE = 20'	CHECKED -	REVISED -			CONTRACT NO. 63134				
	PLOT DATE = 2/17/2009	DATE -	REVISED -			SCALE:	SHEET NO. OF SHEETS	STA. TO STA.	FED. ROAD DIST. NO. 1 ILLINOIS FED. AID PROJECT	