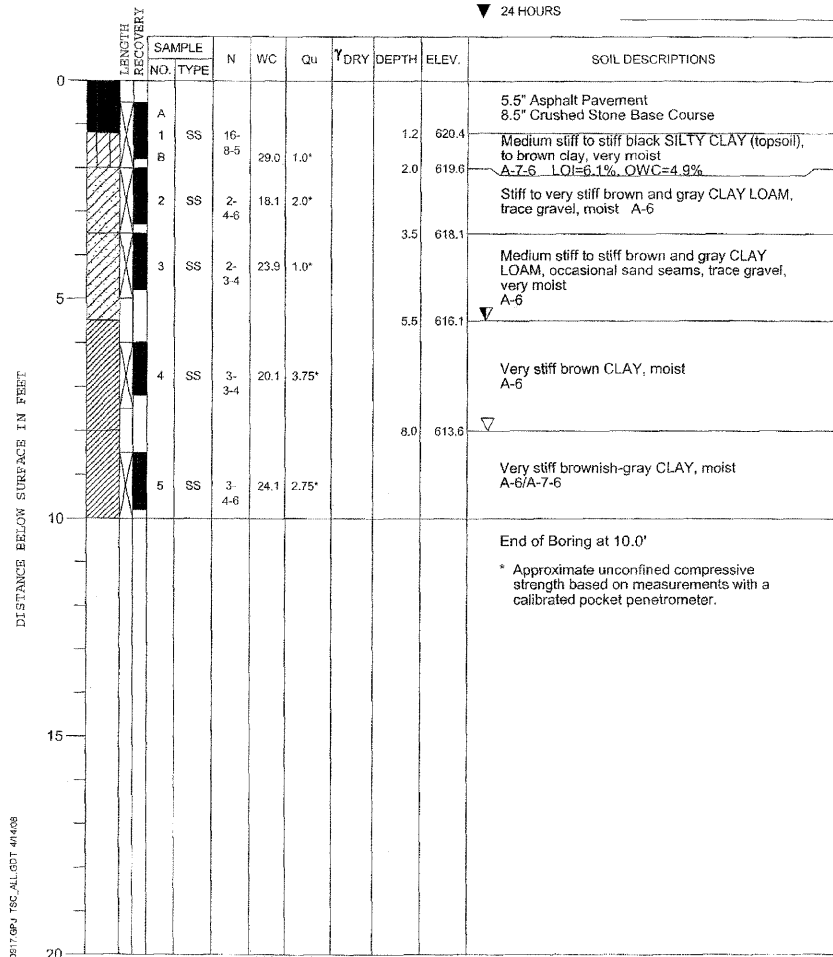
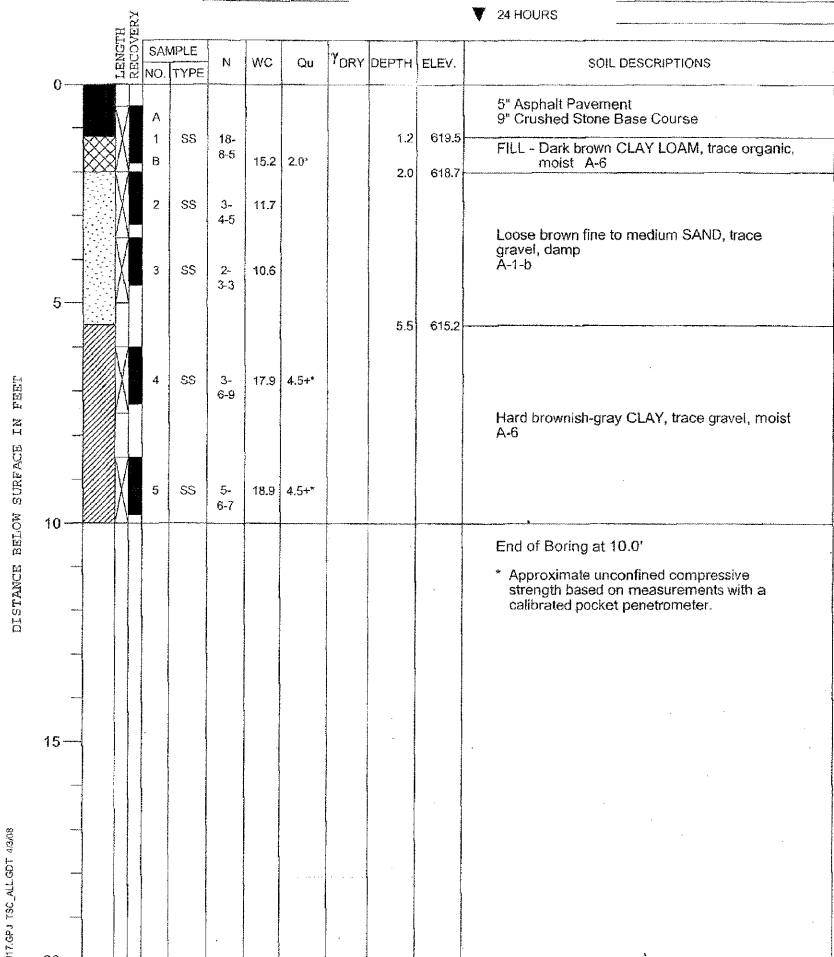


PROJECT **Jackson Blvd. Improvements, Des Plaines Ave. to Harlem Ave., Forest Park, IL**
 CLIENT **Christopher B. Burke Engineering, Ltd., Rosemont, Illinois**
 BORING **1** DATE STARTED **3-26-08** DATE COMPLETED **3-26-08** JOB **L-70,917**
 ELEVATIONS WATER LEVEL OBSERVATIONS
 GROUND SURFACE **621.6** WHILE DRILLING **5.5'**
 END OF BORING **611.6** AT END OF BORING **8.0'**
 24 HOURS



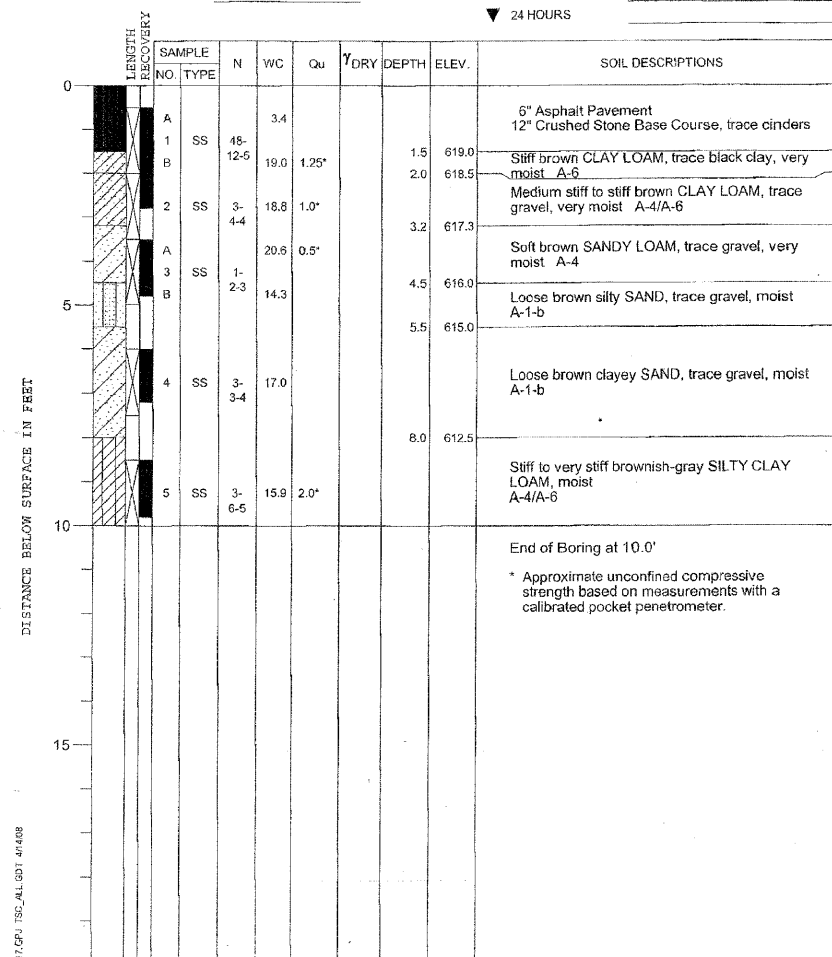
DRILL RIG NO. **256**
 Division lines between deposits represent approximate boundaries between soil types; in-situ, the transition may be gradual.

PROJECT **Jackson Blvd. Improvements, Des Plaines Ave. to Harlem Ave., Forest Park, IL**
 CLIENT **Christopher B. Burke Engineering, Ltd., Rosemont, Illinois**
 BORING **2** DATE STARTED **3-26-08** DATE COMPLETED **3-26-08** JOB **L-70,917**
 ELEVATIONS WATER LEVEL OBSERVATIONS
 GROUND SURFACE **620.7** WHILE DRILLING **Dry**
 END OF BORING **610.7** AT END OF BORING **Dry**
 24 HOURS



DRILL RIG NO. **256**
 Division lines between deposits represent approximate boundaries between soil types; in-situ, the transition may be gradual.

PROJECT **Jackson Blvd. Improvements, Des Plaines Ave. to Harlem Ave., Forest Park, IL**
 CLIENT **Christopher B. Burke Engineering, Ltd., Rosemont, Illinois**
 BORING **3** DATE STARTED **3-26-08** DATE COMPLETED **3-26-08** JOB **L-70,917**
 ELEVATIONS WATER LEVEL OBSERVATIONS
 GROUND SURFACE **620.5** WHILE DRILLING **Dry**
 END OF BORING **610.5** AT END OF BORING **Dry**
 24 HOURS



DRILL RIG NO. **256**
 Division lines between deposits represent approximate boundaries between soil types; in-situ, the transition may be gradual.