

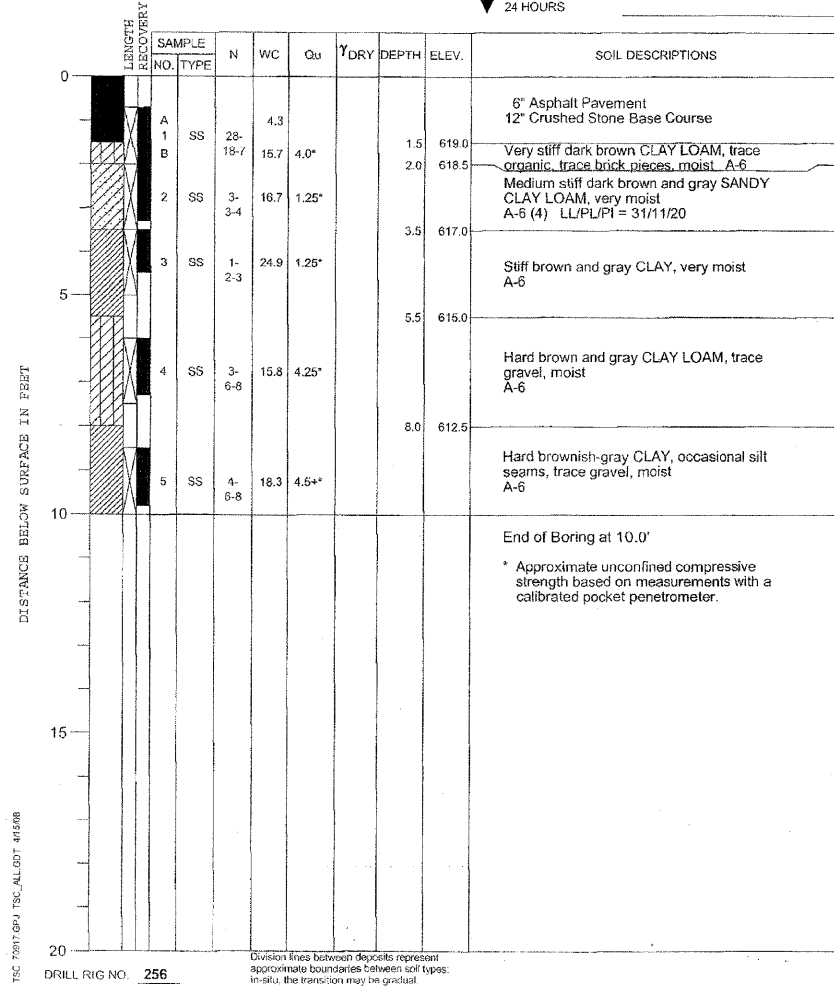
PROJECT Jackson Blvd. Improvements, Des Plaines Ave. to Harlem Ave., Forest Park, IL

CLIENT Christopher B. Burke Engineering, Ltd., Rosemont, Illinois



BORING 4 DATE STARTED 3-26-08 DATE COMPLETED 3-26-08 JOB L-70,917

ELEVATIONS WATER LEVEL OBSERVATIONS
 GROUND SURFACE 620.5 WHILE DRILLING Dry
 END OF BORING 610.5 AT END OF BORING Dry
 24 HOURS



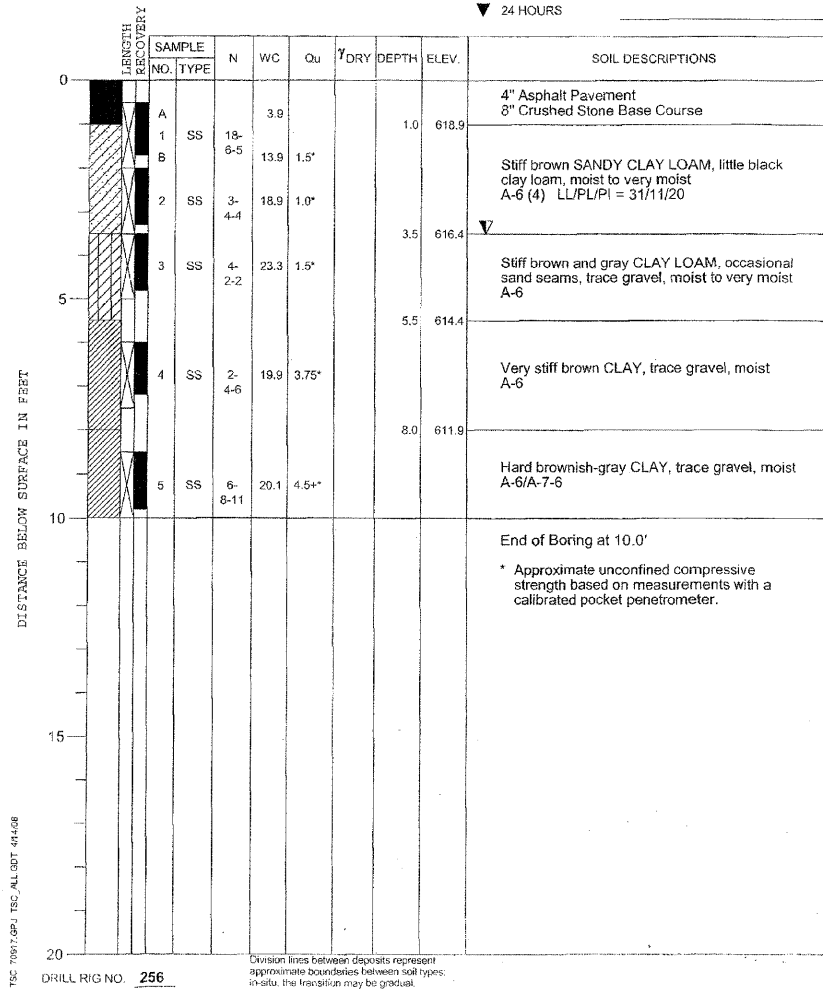
PROJECT Jackson Blvd. Improvements, Des Plaines Ave. to Harlem Ave., Forest Park, IL

CLIENT Christopher B. Burke Engineering, Ltd., Rosemont, Illinois



BORING 5 DATE STARTED 3-26-08 DATE COMPLETED 3-26-08 JOB L-70,917

ELEVATIONS WATER LEVEL OBSERVATIONS
 GROUND SURFACE 619.9 WHILE DRILLING 3.5'
 END OF BORING 609.9 AT END OF BORING Dry
 24 HOURS



PROJECT Jackson Blvd. Improvements, Des Plaines Ave. to Harlem Ave., Forest Park, IL

CLIENT Christopher B. Burke Engineering, Ltd., Rosemont, Illinois



BORING 6 DATE STARTED 3-26-08 DATE COMPLETED 3-26-08 JOB L-70,917

ELEVATIONS WATER LEVEL OBSERVATIONS
 GROUND SURFACE 620.0 WHILE DRILLING 5.5'
 END OF BORING 610.0 AT END OF BORING 5.0'
 24 HOURS

