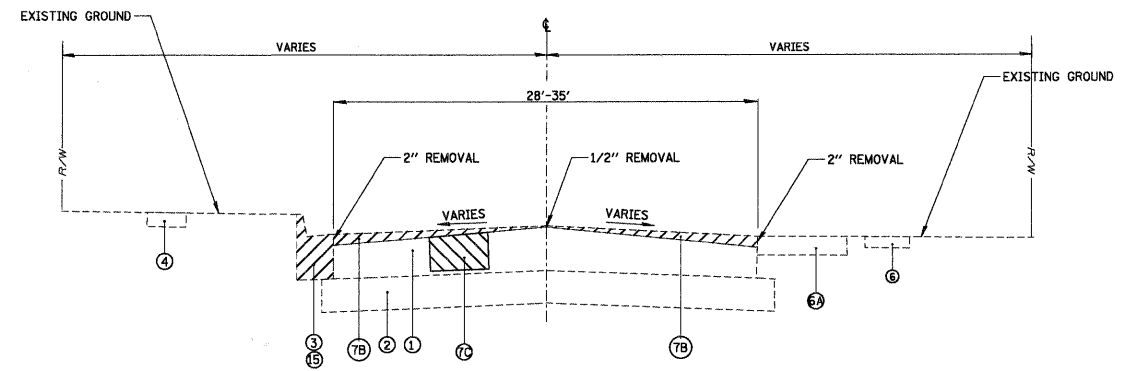
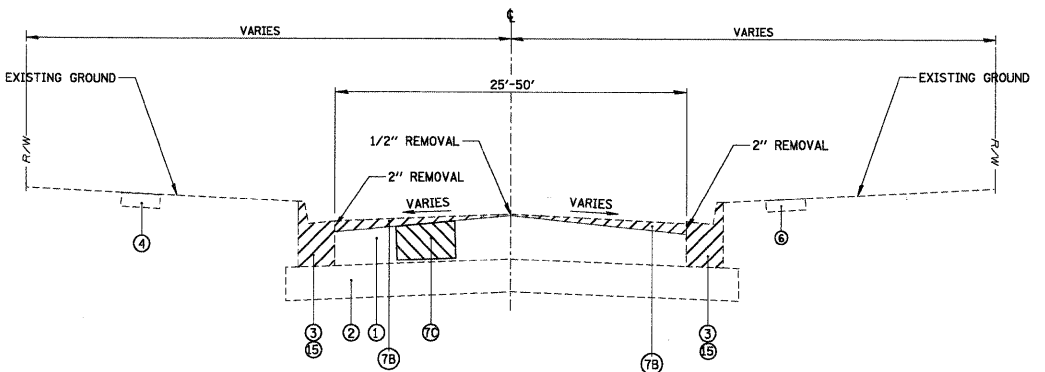


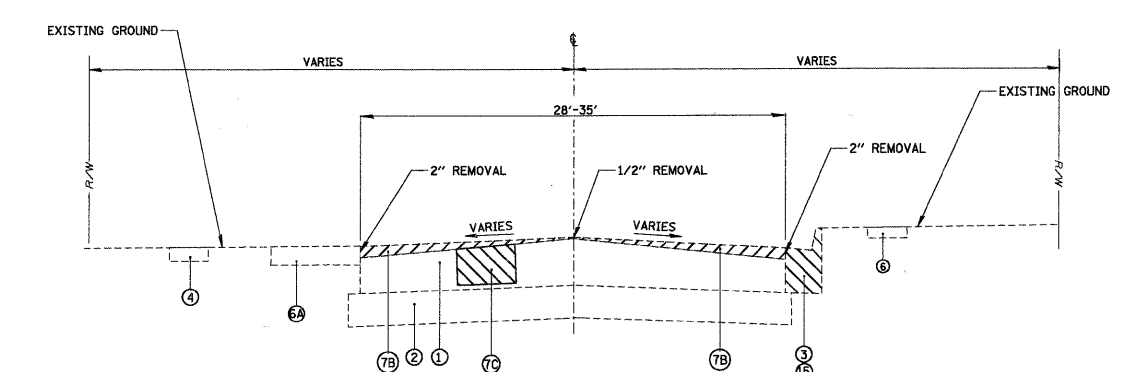
HUNTLEY-DUNDEE ROAD  
EXISTING TYPICAL SECTION  
I STA. 100+38.95 TO STA. 131+00.0  
II STA. 135+81.2 TO STA. 138+96.2  
III STA. 142+30.5 TO STA. 153+47.4  
IV STA. 155+80.4 TO STA. 159+97.4  
V STA. 163+41.7 TO STA. 175+00.0



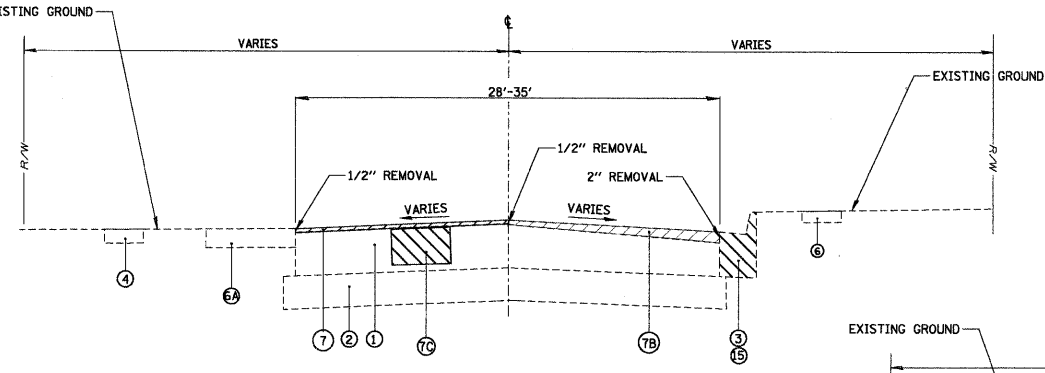
HUNTLEY-DUNDEE ROAD  
EXISTING TYPICAL SECTION  
VI STA. 141+22.8 TO STA. 142+30.5  
VII STA. 162+41.7 TO STA. 163+41.7



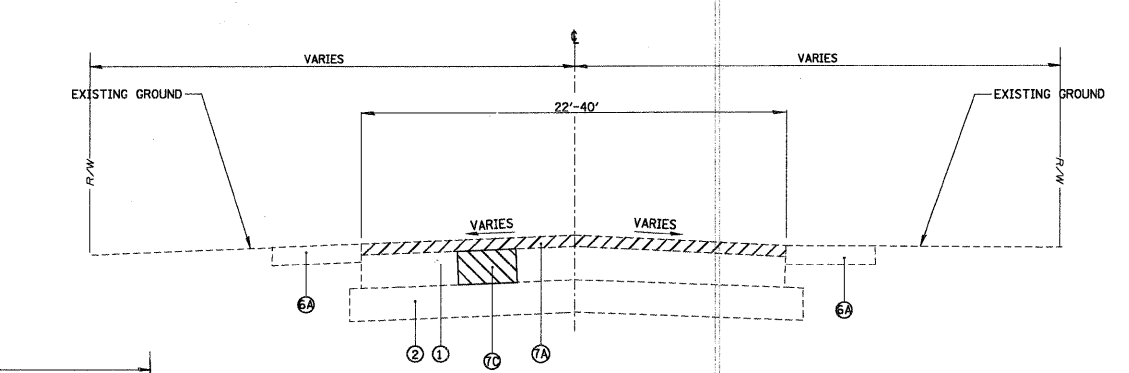
HUNTLEY-DUNDEE ROAD  
EXISTING TYPICAL SECTION  
VIII STA. 139+84.2 TO STA. 141+22.8  
IX STA. 160+91.2 TO STA. 162+41.7



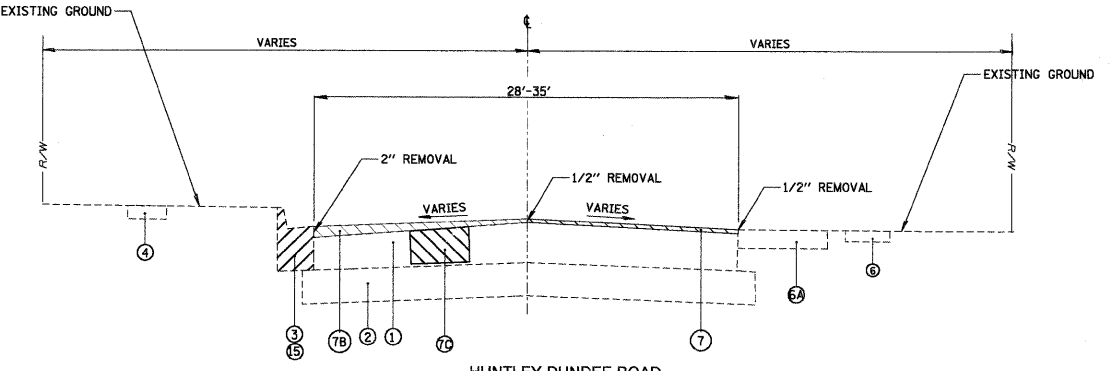
HUNTLEY-DUNDEE ROAD  
EXISTING TYPICAL SECTION  
X STA. 138+96.2 TO STA. 139+84.2  
XI STA. 159+97.4 TO STA. 160+91.2



HUNTLEY-DUNDEE ROAD  
EXISTING TYPICAL SECTION  
XII STA. 131+00 TO STA. 135+81.2



HUNTLEY-DUNDEE ROAD  
EXISTING TYPICAL SECTION  
XIII STA. 175+00.0 TO STA. 191+83.0



HUNTLEY-DUNDEE ROAD  
EXISTING TYPICAL SECTION  
XIV STA. 153+47.4 TO STA. 155+80.4

- LEGEND**
- 1 EXISTING HOT-MIX ASPHALT PAVEMENT
  - 2 EXISTING AGGREGATE SUBBASE
  - 3 EXISTING B6.12 CURB AND GUTTER
  - 4 EXISTING PCC SIDEWALK
  - 6 EXISTING HOT-MIX ASPHALT BIKE PATH
  - 6A EXISTING AGGREGATE SHOULDER
  - 7 HOT-MIX ASPHALT SURFACE REMOVAL, 1/2"
  - 7A HOT-MIX ASPHALT SURFACE REMOVAL, 2"
  - 7B HOT-MIX ASPHALT SURFACE REMOVAL, SPECIAL
  - 7C CLASS D PATCHES, 6" (LOCATION AND TYPE AS DIRECTED BY RE)
  - 8 TOPSOIL, IDOT CL. 1A SEEDING AND EROSION CONTROL BLANKET AS DIRECTED BY THE ENGINEER AND AS NECESSARY FOR CURB AND GUTTER REMOVAL AND REPLACEMENT, PCC SIDEWALK 5" AND DRIVEWAY REPLACEMENT (INCIDENTAL TO COMBINATION CONCRETE CURB AND GUTTER REMOVAL AND REPLACEMENT, AGGREGATE SHOULDER, PCC SIDEWALK 5" AND PAVEMENT REMOVAL)
  - 9 PROPOSED POLYMERIZED LEVELING BINDER (MACHINE METHOD), IL-4.75, N50 - 3/4"
  - 10 PROPOSED HOT-MIX ASPHALT SURFACE COURSE, MIX "D", N70 - 1 1/2"
  - 11 PROPOSED BITUMINOUS MATERIAL (PRIME COAT)
  - 12 PROPOSED AGGREGATE (PRIME COAT)
  - 13 PROPOSED AREA REFLECTIVE CRACK CONTROL TREATMENT
  - 14 PROPOSED AGGREGATE SHOULDER, TYPE B
  - 15 COMBINATION CONCRETE CURB AND GUTTER REMOVAL AND REPLACEMENT (AS DIRECTED BY THE ENGINEER). INCLUDES 4" SUBBASE GRANULAR MATERIAL TYPE B.

**STATE OF ILLINOIS  
DEPARTMENT OF TRANSPORTATION**

**HUNTLEY-DUNDEE ROAD  
EXISTING TYPICAL SECTIONS**

|  |                      |                  |           |            |                     |              |                     |                           |                |                 |             |                    |
|--|----------------------|------------------|-----------|------------|---------------------|--------------|---------------------|---------------------------|----------------|-----------------|-------------|--------------------|
| FILE NAME = N:\Huntley\070103\070103.0001\Civil\TYE\TYE-Dundee.sht | USER NAME = MAGOLDEN | DESIGNED - LMF   | REVISED - | SCALE: NTS | SHEET NO. OF SHEETS | STA. TO STA. | F.A. RTE. 0035      | SECTION 08-00033-00-RS    | COUNTY McHENRY | TOTAL SHEETS 19 | SHEET NO. 4 | CONTRACT NO. 63141 |
| PLOT SCALE = NTS   | CHECKED - LMF        | DATE - 2/18/2009 | REVISED - |            |                     |              | FED. ROAD DIST. NO. | ILLINOIS FED. AID PROJECT |                |                 |             |                    |