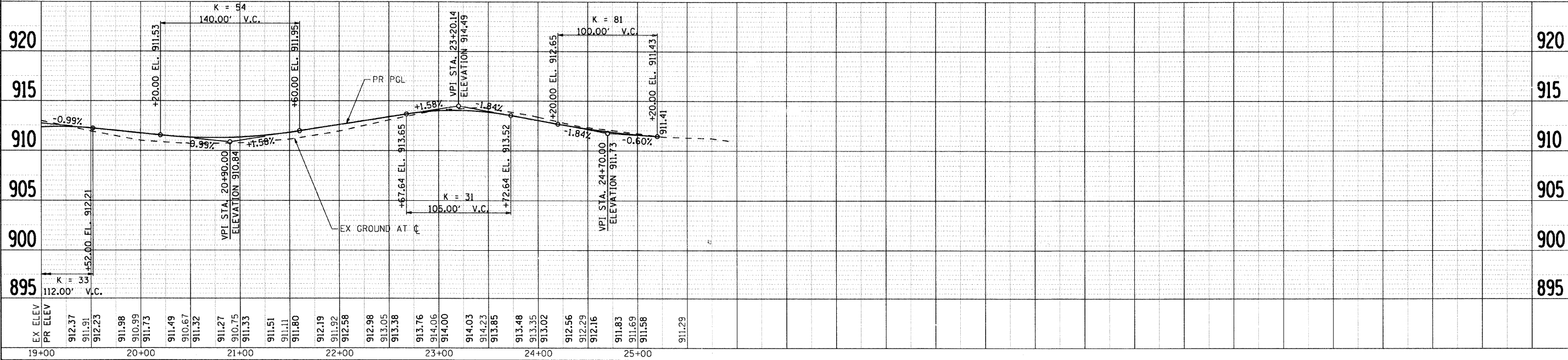
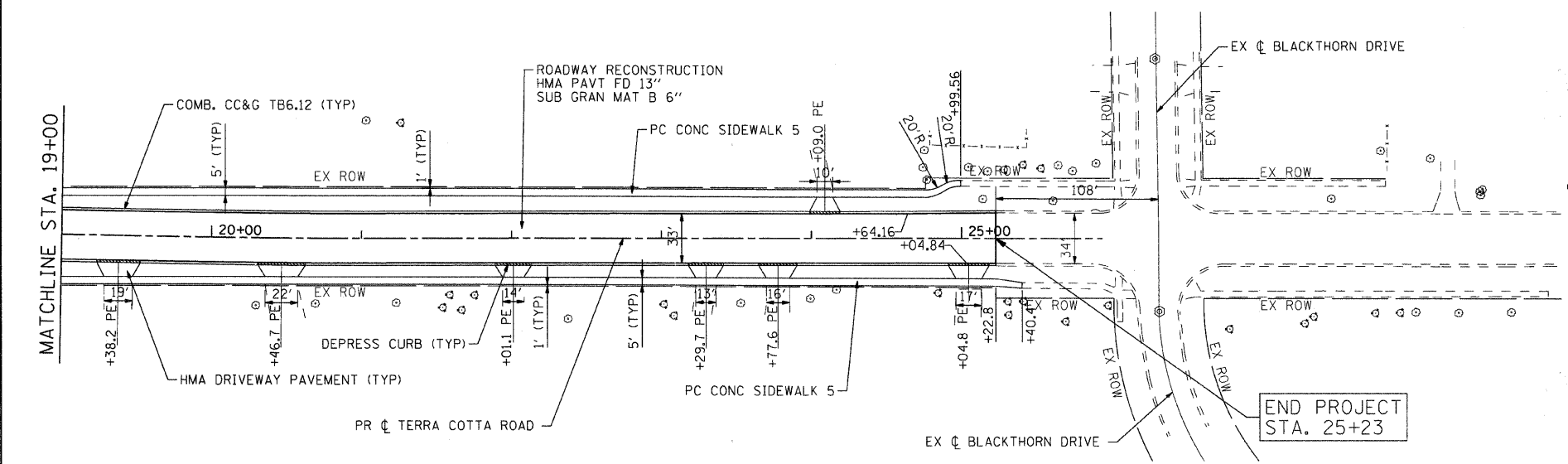
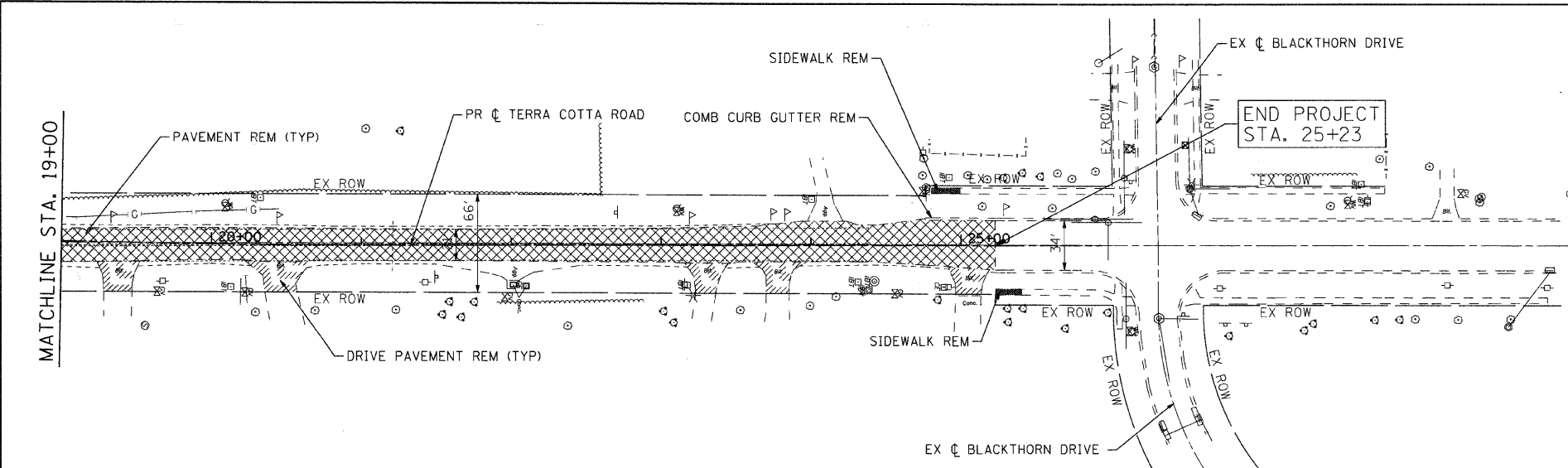


DATE	
BY	
REVISIONS	
NO.	
PLAN	
NO.	
NO.	
NO.	
NO.	
NO.	
NO.	
NO.	

DATE	
BY	
REVISIONS	
NO.	
PROFILE	
NO.	
NO.	
NO.	
NO.	
NO.	
NO.	

COMPANY NAME: J. MELNISH
 PROJECT CONTACT: ALGONQUIN AND NUNDA TOWNSHIP
 CLIENT: 2/13/2009 12:15:57 PM
 DATE PLOTTED: 08/24/09-02:00 PM
 FILE NAME: 080154-prp-02.dgn
 PEN TABLE: storage:\prps\prp



EX ELEV	912.37	911.91	912.23	911.98	910.99	911.73	911.49	910.67	911.32	911.27	910.75	911.33	911.51	911.11	911.80	912.19	911.92	912.58	912.98	913.05	913.38	913.76	914.06	914.00	914.03	914.23	913.85	913.48	913.35	913.02	912.56	912.29	912.16	911.83	911.69	911.58	911.29					
PR ELEV																																										

DESIGNED	-	JRM	REVISIONS	-
DRAWN	-	JPA	REVISIONS	-
CHECKED	-	TCH	REVISIONS	-
DATE	-	2/13/09	REVISIONS	-

MCHENRY COUNTY
DIVISION OF TRANSPORTATION

SCALE: 1" = 50'
 SHEET NO. 2 OF 3 SHEETS
 STA. 19+00.00 TO STA. END

F.A. RTE.	SECTION	COUNTY	TOTAL SHEETS	SHEET NO.
0116	08-00327-01-CH	MCHENRY	56	9
FED. ROAD DIST. NO.	ILLINOIS FED. AID PROJECT	CONTRACT NO. 63144		