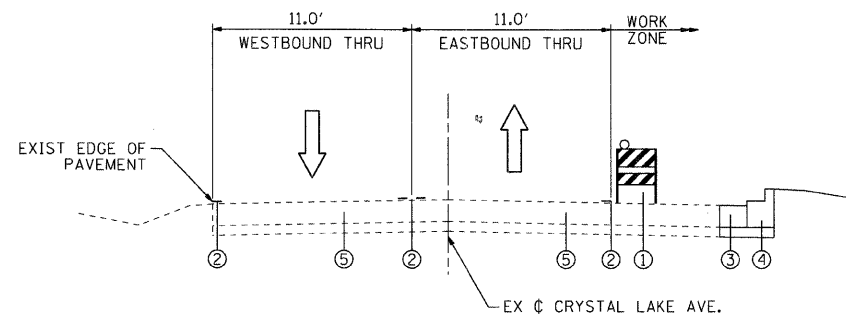


**MAINTENANCE OF TRAFFIC GENERAL NOTES**

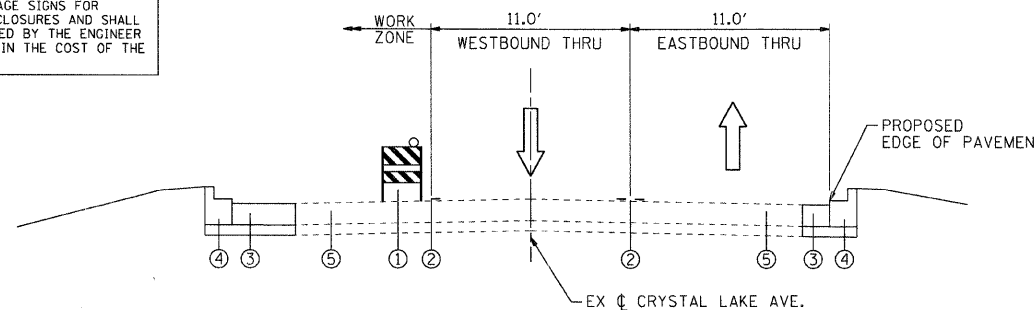
1. THE CONTRACTOR SHALL FURNISH, ERECT, MAINTAIN AND REMOVE ALL SIGNS, BARRICADES, FLAGGERS, PAVEMENT STRIPING AND OTHER TRAFFIC CONTROL DEVICES AS MAY BE NECESSARY FOR THE PURPOSE OF REGULATING, WARNING OR GUIDING TRAFFIC. PROPER PLACEMENT AND MAINTENANCE OF ALL TRAFFIC CONTROL DEVICES SHALL BE THE SOLE RESPONSIBILITY OF THE CONTRACTOR AND MUST BE IN ACCORDANCE WITH THE APPLICABLE PARTS OF SECTION 701 OF THE STANDARD SPECIFICATIONS, THE ILLINOIS MANUAL ON UNIFORM TRAFFIC CONTROL DEVICES FOR STREETS AND HIGHWAYS AND THE HIGHWAY STANDARDS. TRAFFIC CONTROL DEPICTED ON THE CONSTRUCTION STAGING PLANS IS THE MINIMUM REQUIREMENT. OTHER WORK OR SIGNING MAY BE REQUIRED BY THE ENGINEER.
2. THE CONTRACTOR SHALL MAINTAIN ONE LANE OF TRAFFIC FLOW AT ALL TIMES DURING CONSTRUCTION ON CRYSTAL LAKE AVENUE. ALLOWABLE HOURS FOR LANE CLOSURES ARE 9:00 AM TO 3:00 PM.
3. THE CONTRACTOR SHALL USE PAVEMENT MARKING TAPE TYPE III FOR TEMPORARY LANE MARKINGS ON ALL PERMANENT PAVEMENT. PAINT PAVEMENT MARKINGS MAY BE USED ON ALL SURFACES TO BE REMOVED OR RESURFACED.
4. 4" SOLID LINES SHALL BE USED TO DEFINE OUTSIDE LANE LINES DURING MAINTENANCE OF TRAFFIC.
5. ACCESS TO PROPERTIES AND SIDE STREETS SHALL BE PROVIDED AND MAINTAINED DURING CONSTRUCTION. ANY ACCESS CLOSURES SHALL BE COORDINATED WITH THE PROPERTY OWNERS AND SHALL BE PAID FOR AT THE CONTRACT UNIT PRICE PER EACH FOR "TEMPORARY ACCESS (PRIVATE ENTRANCE)."
6. ALL EXISTING PAVEMENT MARKINGS IN CONFLICT WITH THE TEMPORARY PAVEMENT MARKINGS SHALL BE REMOVED OR COVERED BY MEANS APPROVED BY THE ENGINEER. THIS WORK WILL BE PAID FOR PER SQUARE FOOT OF "PAVEMENT MARKING REMOVAL".
7. TYPE I OR II BARRICADES EQUIPPED WITH ONE-WAY FLASHING LIGHTS WILL BE REQUIRED AT ALL OPEN TRENCHES, EXCAVATIONS, OPEN OR EXPOSED SEWER TRENCHES, AND AT ANY OTHER LOCATIONS DESIGNATED BY THE ENGINEER.
8. THE CONTRACTOR SHALL INFORM THE ENGINEER OF ANY STAGE CHANGE AT LEAST TWO WORKING DAYS IN ADVANCE OF THE CHANGE.
9. EXISTING TRAFFIC CONTROL DEVICES ARE TO BE PROTECTED FROM DAMAGE BY THE CONTRACTOR. ANY DAMAGE CAUSED BY HIS WORK SHALL BE REPAIRED TO THE SATISFACTION OF THE ENGINEER AT THE EXPENSE OF THE CONTRACTOR.
12. THE CONTRACTOR WILL PROVIDE AND INSTALL TWO (2) WEIGHTED SAND BAGS ON EACH BARRICADE USED. (TYPE I OR TYPE II (ONE (1) WEIGHTED SAND BAG ACROSS EACH BOTTOM RAIL.) ALL TYPE III BARRICADES SHALL REQUIRE A MINIMUM OF FOUR (4) SANDBAGS PER BARRICADE.
13. THE CONTRACTOR WILL BE REQUIRED TO COORDINATE THE MAINTENANCE OF TRAFFIC AND CONSTRUCTION WITH AN ADJACENT PROJECT ON THE WEST LEG CRYSTAL LAKE AVENUE. THE MAINTENANCE OF TRAFFIC WILL BE ADJUSTED AS DIRECTED BY THE ENGINEER TO MATCH THE ADJACENT PROJECT. ANY ADDITIONAL WORK WILL BE INCLUDED IN THE COST OF TRAFFIC CONTROL AND PROTECTION (SPECIAL).
14. THE CONTRACTOR SHALL BE REQUIRED TO FURNISH UP TO FOUR (4) CHANGEABLE MESSAGE SIGNS FOR THIS PROJECT. THE SIGNS SHALL BE OPERATIONAL TWO WEEKS PRIOR TO ANY LANE CLOSURES AND SHALL BE LOCATED AS DIRECTED BY THE ENGINEER. ANY RELOCATION OF THE SIGNS DIRECTED BY THE ENGINEER DURING CONSTRUCTION WILL NOT BE PAID FOR SEPARATELY, BUT SHALL BE INCLUDED IN THE COST OF THE CHANGEABLE MESSAGE SIGN.

**SUGGESTED CONSTRUCTION STAGING**

- STAGE I - TRAFFIC
- PLACE TEMPORARY CONSTRUCTION SIGNAGE AND BARRICADES NECESSARY FOR STAGE I CONSTRUCTION
  - PLACE TRAFFIC DETOUR SIGNING
  - REMOVE ALL CONFLICTING PAVEMENT MARKINGS
  - SHIFT TRAFFIC AS INDICATED
- STAGE I - CONSTRUCTION
- CRYSTAL LAKE AVENUE - REMOVE EXISTING PAVEMENT AS INDICATED, PERFORM EARTHWORK AS REQUIRED, CONSTRUCT STORM SEWER, CURB AND GUTTER, PAVEMENT WIDENING, SIDEWALK AND DRIVEWAYS.
  - PINGREE ROAD - REMOVE EXISTING PAVEMENT AS INDICATED, PERFORM EARTHWORK AS REQUIRED, CONSTRUCT STORM SEWER, CURB AND GUTTER, PAVEMENT, SIDEWALK, AND DRIVEWAYS.
  - TERRA COTTA ROAD - NO WORK
- STAGE II - TRAFFIC
- PLACE/ADJUST TEMPORARY CONSTRUCTION SIGNAGE AND BARRICADES NECESSARY FOR STAGE II CONSTRUCTION.
  - REMOVE ALL CONFLICTING PAVEMENT MARKINGS.
  - SHIFT TRAFFIC AS INDICATED.
- STAGE II - CONSTRUCTION
- CRYSTAL LAKE AVENUE - REMOVE EXISTING PAVEMENT AS INDICATED, PERFORM EARTHWORK AS REQUIRED, CONSTRUCT STORM SEWER, CURB AND GUTTER, PAVEMENT WIDENING, SIDEWALK AND DRIVEWAYS.
  - TERRA COTTA ROAD - REMOVE EXISTING PAVEMENT AS INDICATED, PERFORM EARTHWORK AS REQUIRED, CONSTRUCT STORM SEWER, CURB AND GUTTER, PAVEMENT, SIDEWALK, AND DRIVEWAYS.
  - PINGREE ROAD - NO WORK
- STAGE III - TRAFFIC
- OPEN ROADWAYS TO TRAFFIC
  - UTILIZE DAILY LANE CLOSURES TO MAINTAIN ONE LANE OF TRAFFIC IN EACH DIRECTION.
- STAGE III - CONSTRUCTION
- RESURFACE PAVEMENT WITH BINDER AND SURFACE COURSES
  - PLACE PERMANENT PAVEMENT MARKINGS AND TRAFFIC SIGNS
  - PERFORM FINAL RESTORATION
  - REMOVE TEMPORARY CONSTRUCTION SIGNS AND BARRICADES



**STAGE I - CRYSTAL LAKE AVENUE**



**STAGE II - CRYSTAL LAKE AVENUE**

- LEGEND**
- ① TYPE II BARRICADES, SPACED PFR HWY STD.
  - ② TEMPORARY PAVEMENT MARKING LINE 4
  - ③ PROPOSED PAVEMENT WIDENING
  - ④ PROPOSED COMBINATION CONCRETE CURB AND GUTTER
  - ⑤ EXISTING PAVEMENT
  - ⇨ DIRECTION OF TRAFFIC

**METRA SIGN DETAIL**



USER NAME = char.tke	DESIGNED - JRM	REVISED -
PLOT SCALE = N.T.S.	DRAWN - JPA	REVISED -
PLOT DATE = 2/13/2009	CHECKED - TCH	REVISED -
	DATE - 2/13/09	REVISED -

**MCHENRY COUNTY  
DIVISION OF TRANSPORTATION**

**CONSTRUCTION STAGING NOTES AND  
MAINTENANCE OF TRAFFIC DETAILS**

SCALE: N.T.S. SHEET NO. 1 OF 5 SHEETS STA. TO STA.

F.A. RTE.	SECTION	COUNTY	TOTAL SHEETS	SHEET NO.
0116	08-00327-01-CH	MCHENRY	56	11
FED. ROAD DIST. NO.			ILLINOIS FED. AID PROJECT	
			CONTRACT NO. 63144	