

F.A. RTE.	SECTION	COUNTY	TOTAL SHEETS	SHEET NO.
1702	07-00106-00-PV	COOK	75	1
FED. ROAD DIST. NO. 1	ILLINOIS	CONTRACT NO. 63148		

FOR INDEX OF SHEETS, SEE SHEET 2

FOR LIST OF STATE STANDARDS, SEE SHEET 2

STATE OF ILLINOIS  
DEPARTMENT OF TRANSPORTATION  
DIVISION OF HIGHWAYS

PLANS FOR PROPOSED  
FEDERAL AID HIGHWAY

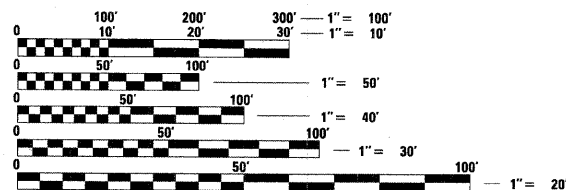
FAU ROUTE 1702 (HARVARD STREET)  
SECTION 07-00106-00-PV  
PROJECT M-HPP-3056(001)  
JOB NO. C-91-193-07  
FROM DESPLAINES AVENUE TO HARLEM AVENUE  
VILLAGE OF FOREST PARK, COOK COUNTY



DESIGN DESIGNATION  
(HARVARD STREET) COLLECTOR

TRAFFIC DATA:  
(HARVARD STREET)

ADT = 2,800 (2007)/3,000 (2030)  
POSTED/DESIGN SPEED = 25 MPH



FULL SIZE PLANS HAVE BEEN PREPARED USING STANDARD ENGINEERING SCALES. REDUCED SIZED PLANS WILL NOT CONFORM TO STANDARD SCALES. IN MAKING MEASUREMENTS ON REDUCED PLANS, THE ABOVE SCALES MAY BE USED.

BEGIN IMPROVEMENTS  
HARVARD STREET  
STATION 100+58.77

END IMPROVEMENTS  
HARVARD STREET  
STATION 138+20.11

LOCATION MAP

GROSS LENGTH = 3,761.34 FEET (0.71 MILES) NET LENGTH = 3,761.34 FEET (0.71 MILES)

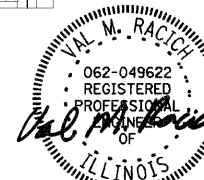
FIELD ENGINEER: MARILIN SOLOMON, PE  
201 W. CENTER COURT  
SCHAMBURG, ILLINOIS 60196-1096  
(847) 705-4407

J.U.L.I.E.  
JOINT UTILITY LOCATION INFORMATION FOR EXCAVATION  
1-800-892-0123 OR 811  
T39N, R12E, SECTION 13

THE CONTRACTOR SHALL BE SOLELY RESPONSIBLE FOR JOB SITE SAFETY AS WELL AS SUPERVISION/DIRECTION AND MEANS/METHODS OF CONSTRUCTION.

CONTRACT NO. 63148

CHRISTOPHER B. BURKE ENGINEERING, LTD.  
9575 W. Higgins Road, Suite 600  
Rosemont, Illinois 60018  
(847) 823-0500



PROFESSIONAL DESIGN FIRM NO.: 184-001175  
EXPIRATION DATE: APRIL 30, 2011

VAL M. RACICH  
ILLINOIS REGISTRATION No. 062-049622 ENGINEER  
EXPIRATION DATE: 11/30/2011

STATE OF ILLINOIS DEPARTMENT OF TRANSPORTATION DIVISION OF HIGHWAYS	
APPROVED	February 19, 2009 <i>Anthony Calabrese</i> MAYOR
PASSED	February 19, 2009 <i>Cheryl Christman</i> DISTRICT 1 ENGINEER OF LOCAL ROADS AND STREETS
RELEASED FOR BID BASED ON LIMITED REVIEW	February 20, 2009 <i>Diane M. O'Keefe</i> DEPUTY DIRECTOR OF HIGHWAYS, REGION 1 ENGINEER

PRINTED BY THE AUTHORITY  
OF THE STATE OF ILLINOIS