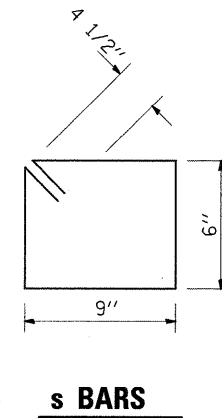
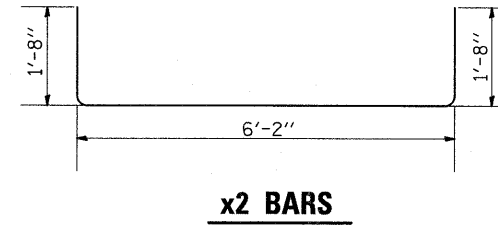
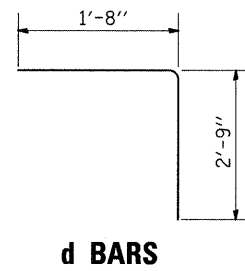
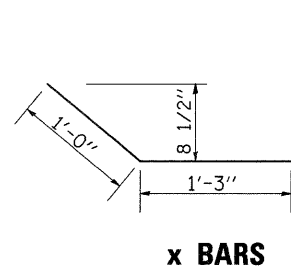
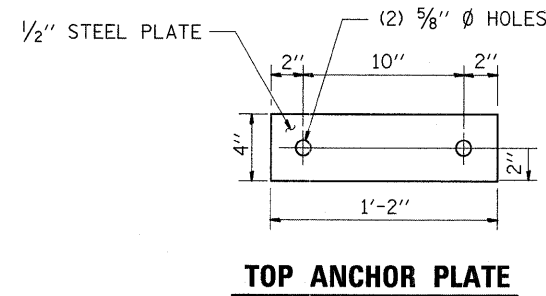
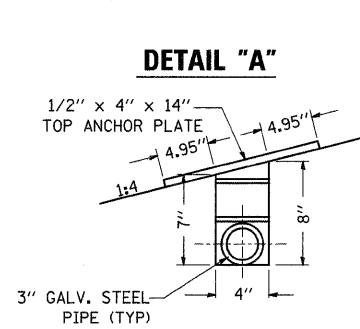


# BOX CULVERT END SECTION NO.1 STA. 448 + 61 RT

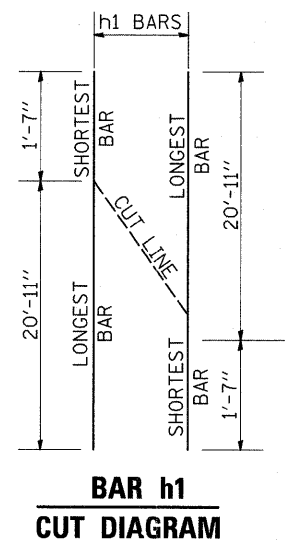
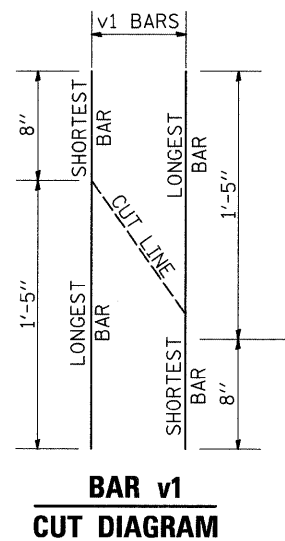
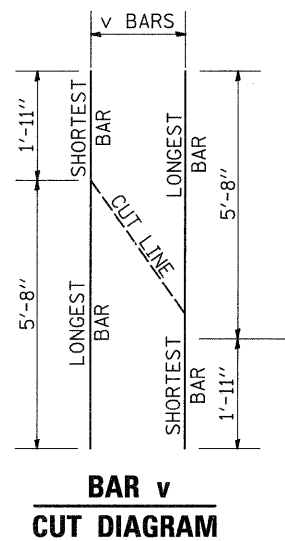


### BILL OF MATERIALS (For Information Only)

BAR	NUMBER	SIZE	LENGTH	SHAPE
a	46	#4	13'-0"	—
d	47	#4	4'-5"	└
h	26	#5	20'-11"	—
h1	5	#4	22'-6"	—
h2	2	#4	21'-7"	—
s	14	#4	3'-3"	□
v	16	#4	7'-7"	—
v1	5	#4	2'-1"	—
x	14	#4	2'-3"	└
x1	3	#4	13'-0"	—
x2	4	#4	7'-10"	└
x3	4	#6	13'-0"	—

DESCRIPTION	UNIT	QTY.
Concrete Box Culverts	CuYd	13.63
Reinforcement Bars	LBS	1,474
3" I.D. Galv Steel Pipe	3ø	13'-7"
	4ø	16'-7"
3" Galv Pipe Caps	EACH	14
1/4" Galv Steel Plate (9" Nominal)	EACH	6
1/2"x4"x14" Galv Steel Plate	EACH	12
5/8"x9" Galv Steel Bolts	EACH	12
Expansion Bolts 1/2"	EACH	24



### GENERAL NOTES:

This work shall be done in accordance with the applicable portion of sections 503, 508, AND 540 of the Standard Specifications.

Contractor shall field verify Galvanized pipe lengths.

Exposed edges shall be beveled 3/4".

The contract unit price "EACH" for Box Culvert End Section No. 1 shall be of precast construction and shall include the expansion bolts, galvanized pipes, class SI Concrete, Bolts, Nuts, Reinforcement, washers, steel plates, and pipe caps.

The contractor has the option of using Cast-In-Place and must provide us with shop drawings for review.

Reinforcement bars shall conform to the requirements of ASTM A 706 Gr. 60 (IL Modified). See Special Provision.

Steel plates shall conform to AASHTO M-183 and shall be galvanized conforming to AASHTO M-111.

Bolts, Nuts, and Washers shall be in accordance with article 505 of the Standard Specifications and shall be galvanized.

See Plan and Profile Sheet for more information.

See Cross Section Sheet for more information.

FILE NAME =	USER NAME = cushmanbw	DESIGNED -	REVISED -	<b>STATE OF ILLINOIS DEPARTMENT OF TRANSPORTATION</b>	<b>BOX CULVERT END SECTION NO.1 STA. 448 + 61 RT</b>	F.A.S. RTE.	SECTION	COUNTY	TOTAL SHEETS	SHEET NO.
c:\pwork\pwork\cushmanbw\dms37201\d07105culv.dgn	DRAWN -	REVISED -	1042			1077-1	OGLE	53	23	
PLOT SCALE = 50.0000' / IN.	CHECKED -	REVISED -	CONTRACT NO. 64B09							
PLOT DATE = Mon Dec 01 13:22:01 2008	DATE -	REVISED -	SCALE:			SHEET NO. 2 OF 2 SHEETS	STA. TO STA.	FED. ROAD DIST. NO.	ILLINOIS FED. AID PROJECT	