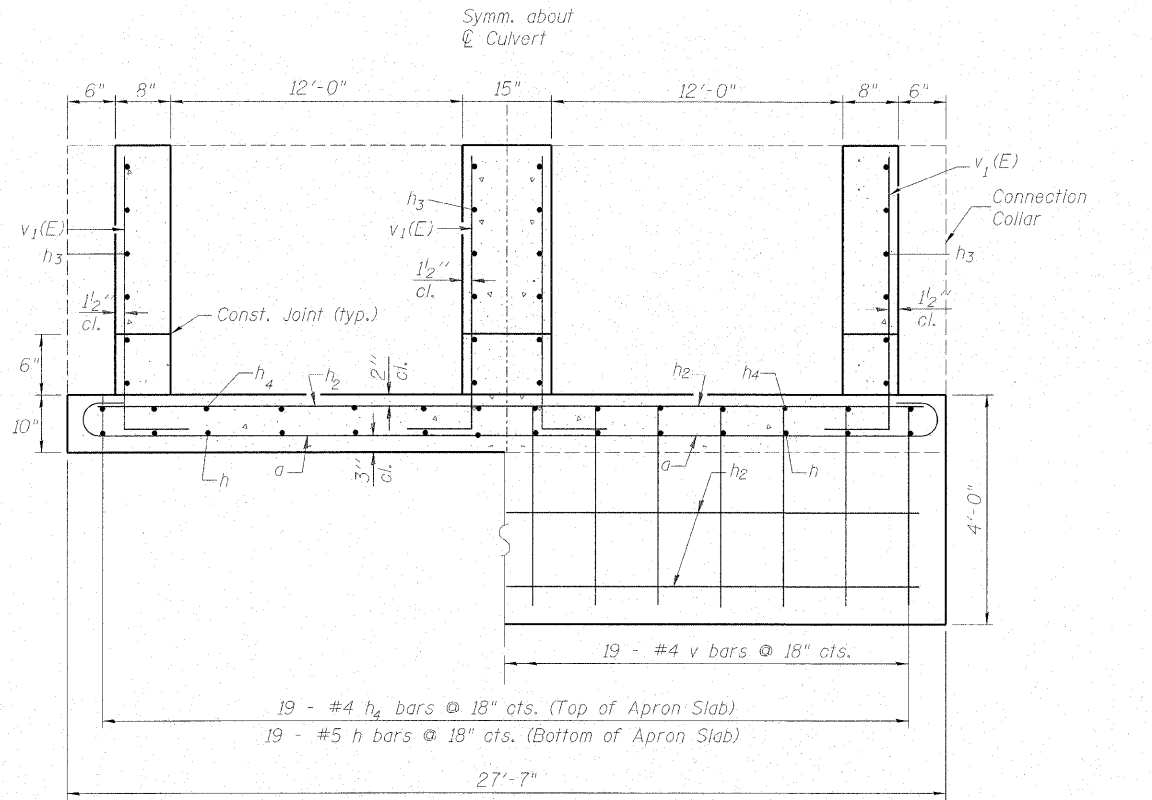
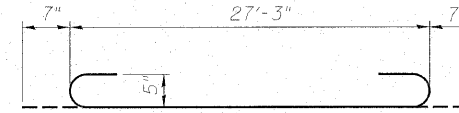


STATE OF ILLINOIS
DEPARTMENT OF TRANSPORTATION

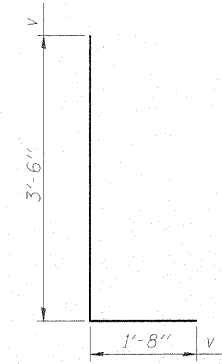


SECTION THRU APRON

HALF END SECTION AT APRON



BAR a



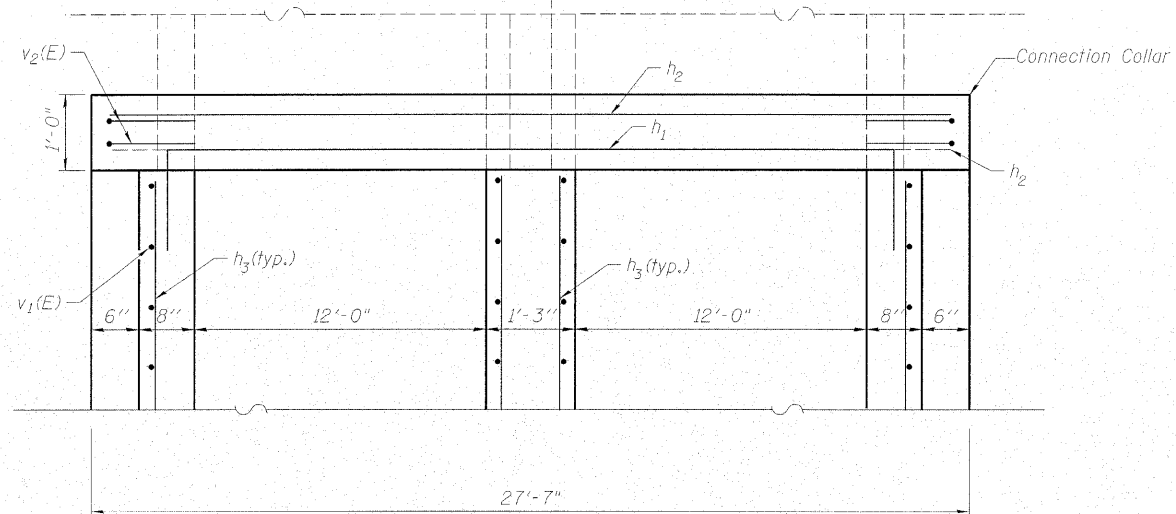
BAR v

BILL OF MATERIAL

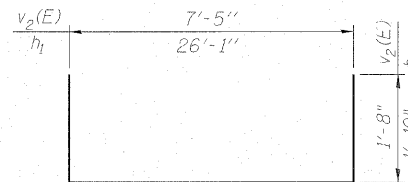
Bar	No.	Size	Length	Shape
a	70	#5	28'-5"	U
h	38	#5	24'-4"	—
h1	2	#4	29'-9"	—
h2	84	#4	27'-1"	—
h3	24	#4	25'-5"	—
h4	38	#4	24'-4"	—
v	38	#4	5'-2"	L
v1(E)	124	#5	11'-1"	—
v2(E)	8	#4	10'-9"	—
s	28	#4	2'-1"	∇
Concrete Box Culverts	Cu. Yd.		72.8	
Reinforcement Bars	Pound		5800	
Reinforcement Bars, Epoxy Coated	Pound		1490	

NOTES

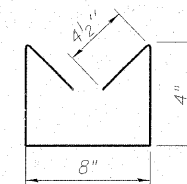
1. Reinforcement Bars shall conform to the requirements of ASTM A706, Grade 60.
2. All construction joints shall be bonded.
3. The contract unit price per Cu. Yd. for Concrete Box Culverts shall include the Bolts, Nuts, Washers, Steel Plates, Earth Excavation and Backfilling as required.



PLAN VIEW AT CONNECTION TO PRECAST BOX



BAR v2(E) & h1



BAR s



DESIGNED - BAB
CHECKED - KEF
DRAWN - LAD
CHECKED - GBM

CULVERT DETAILS

IL. RTE. 251 OVER UNNAMED TRIBUTARY TO KILBUCK CREEK

SHEET NO. 3	F.A.S. RTE.	SECTION	COUNTY	TOTAL SHEETS	SHEET NO.
	1042	107T-1	OGLE	53	28
5 SHEETS	STRUCTURE NO. 071-2027		CONTRACT NO. 64B09		
	FED. ROAD DIST. NO. _ ILLINOIS FED. AID PROJECT				