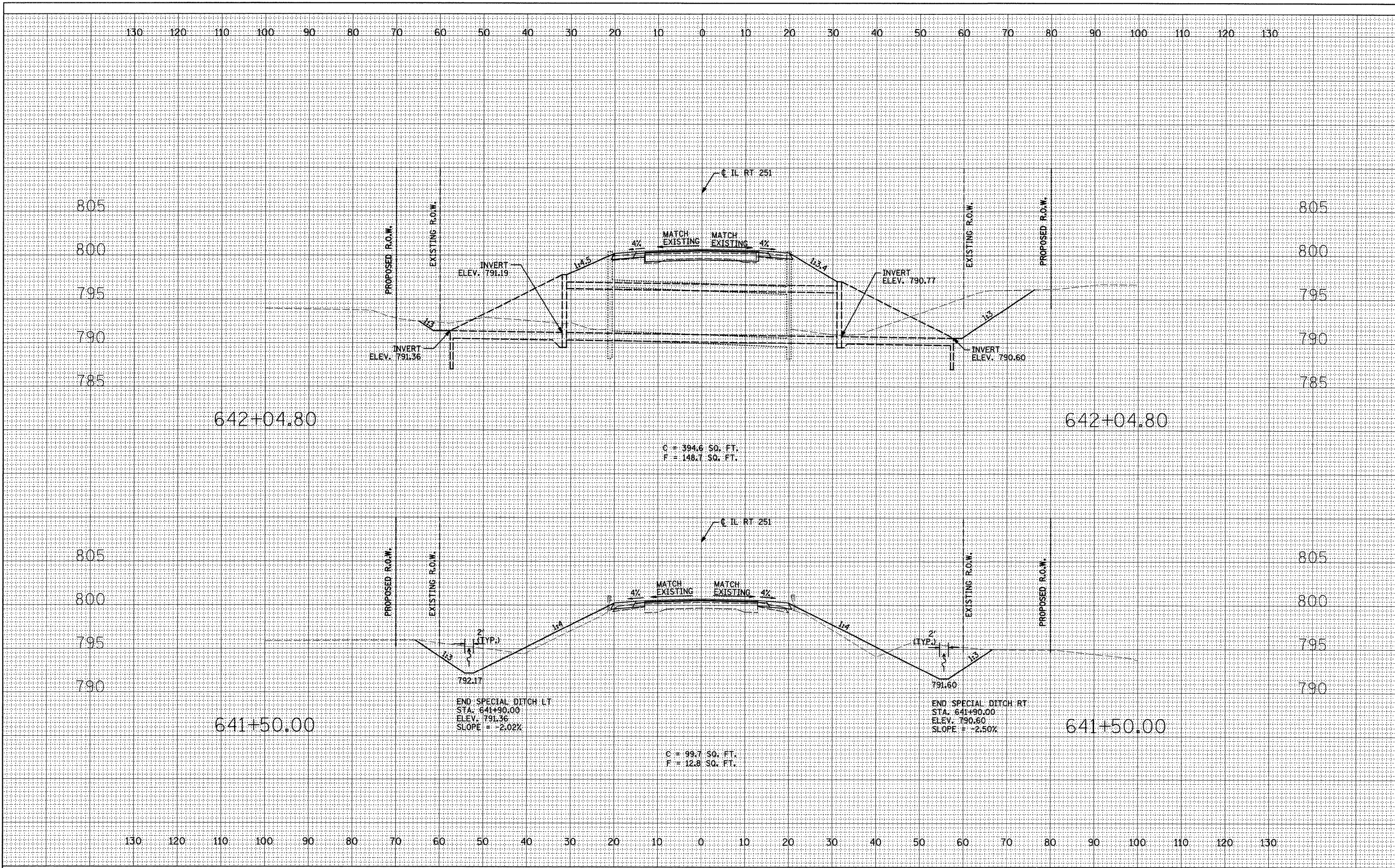


DATE	
BY	
FINAL SURVEY	
PLOTTED	
NOTE BOOK	
NO.	

DATE	
BY	
ORIGINAL SURVEY	
PLOTTED	
NOTE BOOK	
NO.	



FILE NAME = c:\pw\_work\PWIDOT\CUSHMANBW\d010329\10264609-ht-xsh.tdgn

USER NAME = cushmanbw

DESIGNED - DMM	REVISED -
DRAWN - DMM	REVISED -
CHECKED - FL	REVISED -
DATE - 09/2008	REVISED -

**STATE OF ILLINOIS  
DEPARTMENT OF TRANSPORTATION**

**CROSS SECTIONS**  
**IL RTE 251 OVER UNNAMED TRIBUTARY TO KILBUCK CREEK**  
 SCALE: 1"=10'H,5"V SHEET NO. OF SHEETS STA. TO STA.

F.A.S. RTE. 1042	SECTION 107T-1	COUNTY OGLE	TOTAL SHEETS 53	SHEET NO. 50
FED. ROAD DIST. NO.		ILLINOIS FED. AID PROJECT		

CONTRACT NO. 64B09