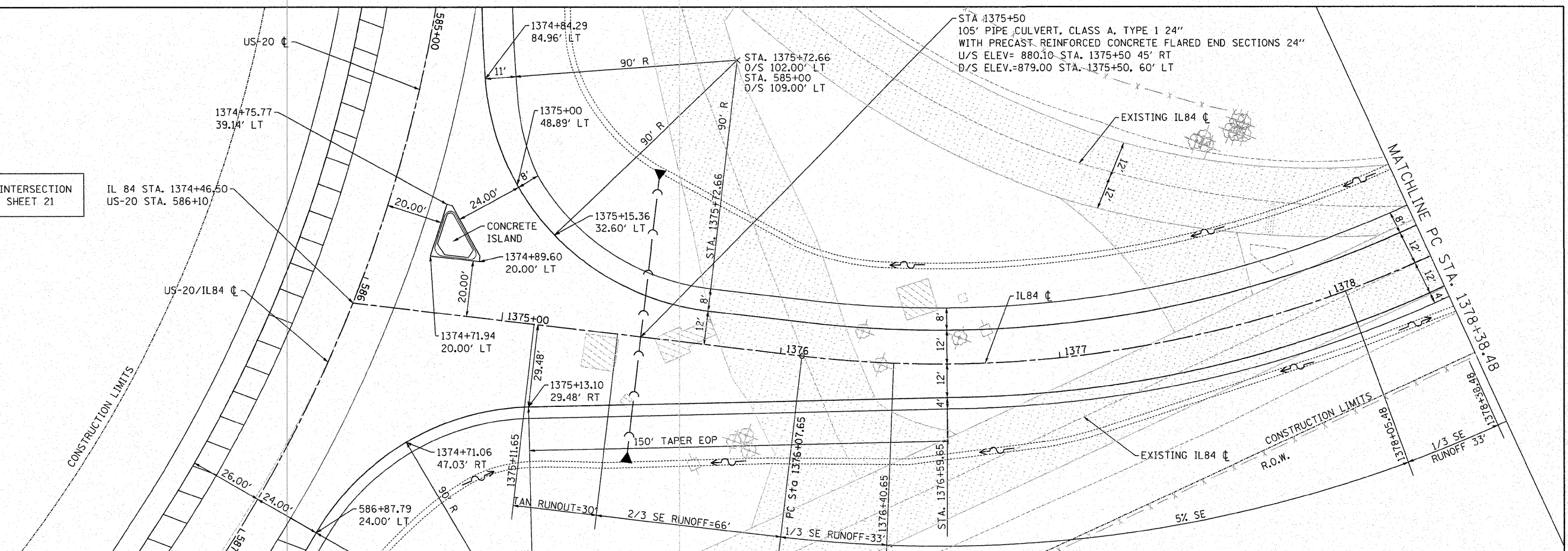


PLAN	SURVEYED	BY	DATE
	ALIGNED		
	CHECKED		
	NO. OF WAY CHECKED		
	CADD FILE NAME		
	NO.		

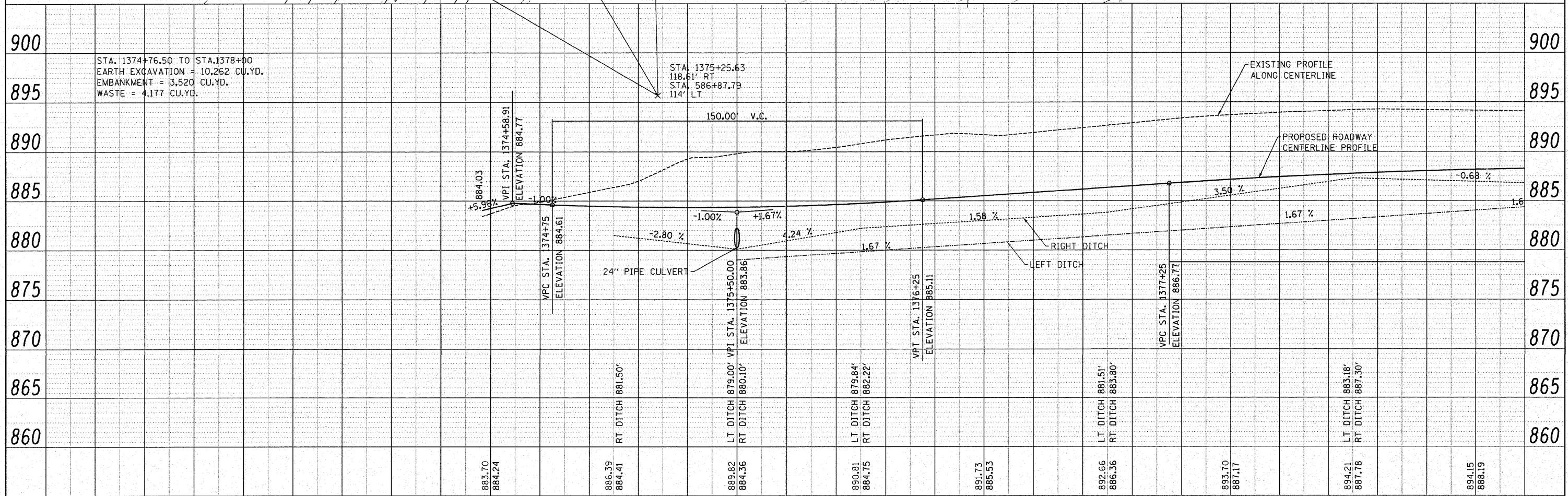
PROP. CURVE 70210  
 PI STA. = 1377+26.06  
 $\Delta = 31^\circ 29' 21''$  (LT)  
 $D = 420.00'$   
 $T = 118.41'$   
 $L = 230.83'$   
 $E = 16.37'$   
 $e = 0.05$  FT/FT  
 $T.R. = 30'$   
 S.E. RUN = 99'  
 P.C. STA = 1376+07.65  
 P.T. STA = 1378+38.48  
 SUPERELEVATION STATIONS  
 NORMAL CROWN STA. 1375+11.65  
 FULL S.E. STA. 1376+40.56  
 FULL S.E. STA. 1378+05.48  
 NORMAL CROWN STA. 1379+34.48

FOR ADDITIONAL INTERSECTION  
 INFORMATION SEE SHEET 21



PROFILE	SURVEYED	BY	DATE
	PLANS CHECKED		
	NO. NOTED		
	STRUCTURE NOTATIONS CHFD		
	NO.		

STA. 1374+76.50 TO STA. 1378+00  
 EARTH EXCAVATION = 10,262 CU.YD.  
 EMBANKMENT = 3,520 CU.YD.  
 WASTE = 4,177 CU.YD.



FILE NAME = W:\2298-03 - US 20 IL 84 Intersection\CAD	USER NAME = IDOTCAD	DESIGNED - SPF	REVISED -	<b>STATE OF ILLINOIS DEPARTMENT OF TRANSPORTATION</b>	<b>PLAN AND PROFILE - IL 84</b>			F.A.P. RTE. 301	SECTION 30-M-2	COUNTY JoDAVISS	TOTAL SHEETS 81	SHEET NO. 17
PLOT SCALE = 20.0000' / IN.	CHECKED - JMS	REVISIED -			SCALE: 20H 5V	SHEET NO. 01 OF 02 SHEETS	STA. 1374+46.50 TO STA. 1378+38.47	CONTRACT NO. 64E29				
PLOT DATE = 1/22/2009	DATE - 01/23/09	REVISIED -			FED. ROAD DIST. NO. ILLINOIS FED. AID PROJECT							