

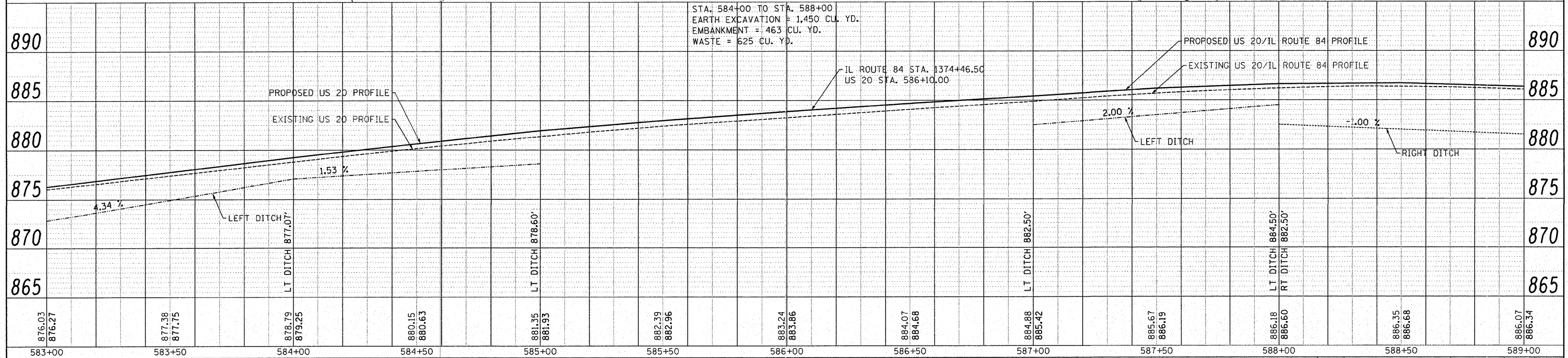
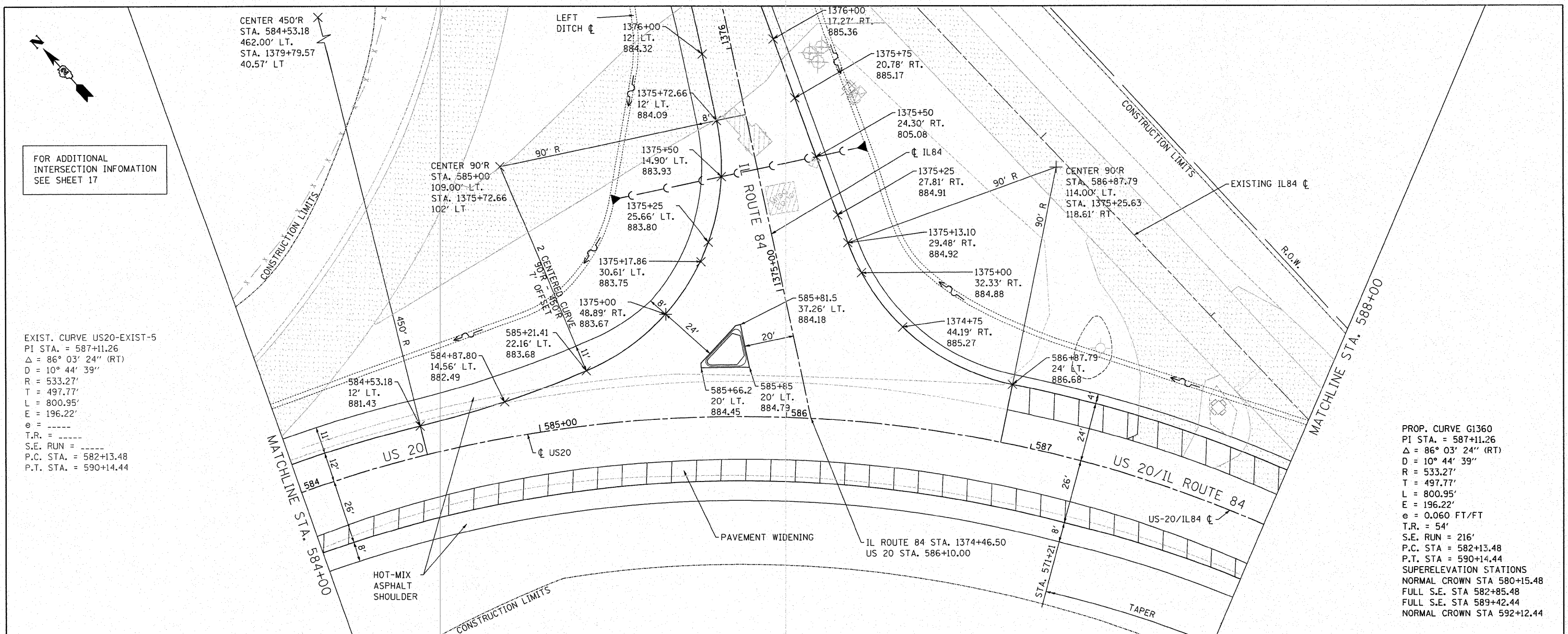
| | |
|--------------------|--|
| DATE | |
| BY | |
| PLANNED | |
| CHECKED | |
| NO. OF WAY CHECKED | |
| CADD FILE NAME | |

| | |
|-----------------------------|--|
| DATE | |
| BY | |
| PROFILE | |
| CHECKED | |
| NO. OF WAY CHECKED | |
| STRUCTURE NOTATIONS CHECKED | |

FOR ADDITIONAL INTERSECTION INFORMATION SEE SHEET 17

EXIST. CURVE US20-EXIST-5
 PI STA. = 587+11.26
 $\Delta = 86^\circ 03' 24''$ (RT)
 $D = 10^\circ 44' 39''$
 $R = 533.27'$
 $T = 497.77'$
 $L = 800.95'$
 $E = 196.22'$
 $e = \text{---}$
 $T.R. = \text{---}$
 $S.E. \text{ RUN} = \text{---}$
 $P.C. \text{ STA.} = 582+13.48$
 $P.T. \text{ STA.} = 590+14.44$

PROP. CURVE G1360
 PI STA. = 587+11.26
 $\Delta = 86^\circ 03' 24''$ (RT)
 $D = 10^\circ 44' 39''$
 $R = 533.27'$
 $T = 497.77'$
 $L = 800.95'$
 $E = 196.22'$
 $e = 0.060 \text{ FT/FT}$
 $T.R. = 54'$
 $S.E. \text{ RUN} = 216'$
 $P.C. \text{ STA.} = 582+13.48$
 $P.T. \text{ STA.} = 590+14.44$
 SUPERELEVATION STATIONS
 NORMAL CROWN STA 580+15.48
 FULL S.E. STA 582+85.48
 FULL S.E. STA 589+42.44
 NORMAL CROWN STA 592+12.44



| | | | | | | | | | | | | | |
|--|----------------------------------|-----------------|-----------|---|---------------------------------|---------------------------|----------------------------|--------------------|-----------------|---------------------------|-------------------|-----------------|--------------|
| FILE NAME = W:\2298-03 - US 20 IL 84 Intersection\CADD | USER NAME = IDOTCAD | DESIGNED - SPF | REVISED - | STATE OF ILLINOIS DEPARTMENT OF TRANSPORTATION | PLAN AND PROFILE - US 20 | | | | F.A.P. RTE. 301 | SECTION 30-M-2 | COUNTY JO DAVIESS | TOTAL SHEETS 81 | SHEET NO. 21 |
| | Sheets\0208108-shr-plnprf-20.dgn | DRAWN - AJP | REVISED - | | SCALE: 20H 5V | SHEET NO. 03 OF 05 SHEETS | STA. 584+00 TO STA. 588+00 | CONTRACT NO. 64E29 | | ILLINOIS FED. AID PROJECT | | | |
| | PLOT SCALE = 20.0000' / IN. | CHECKED - JMS | REVISED - | | | | | | | | | | |
| | PLOT DATE = 1/22/2009 | DATE - 01/23/09 | REVISED - | | | | | | | | | | |