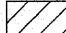


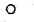


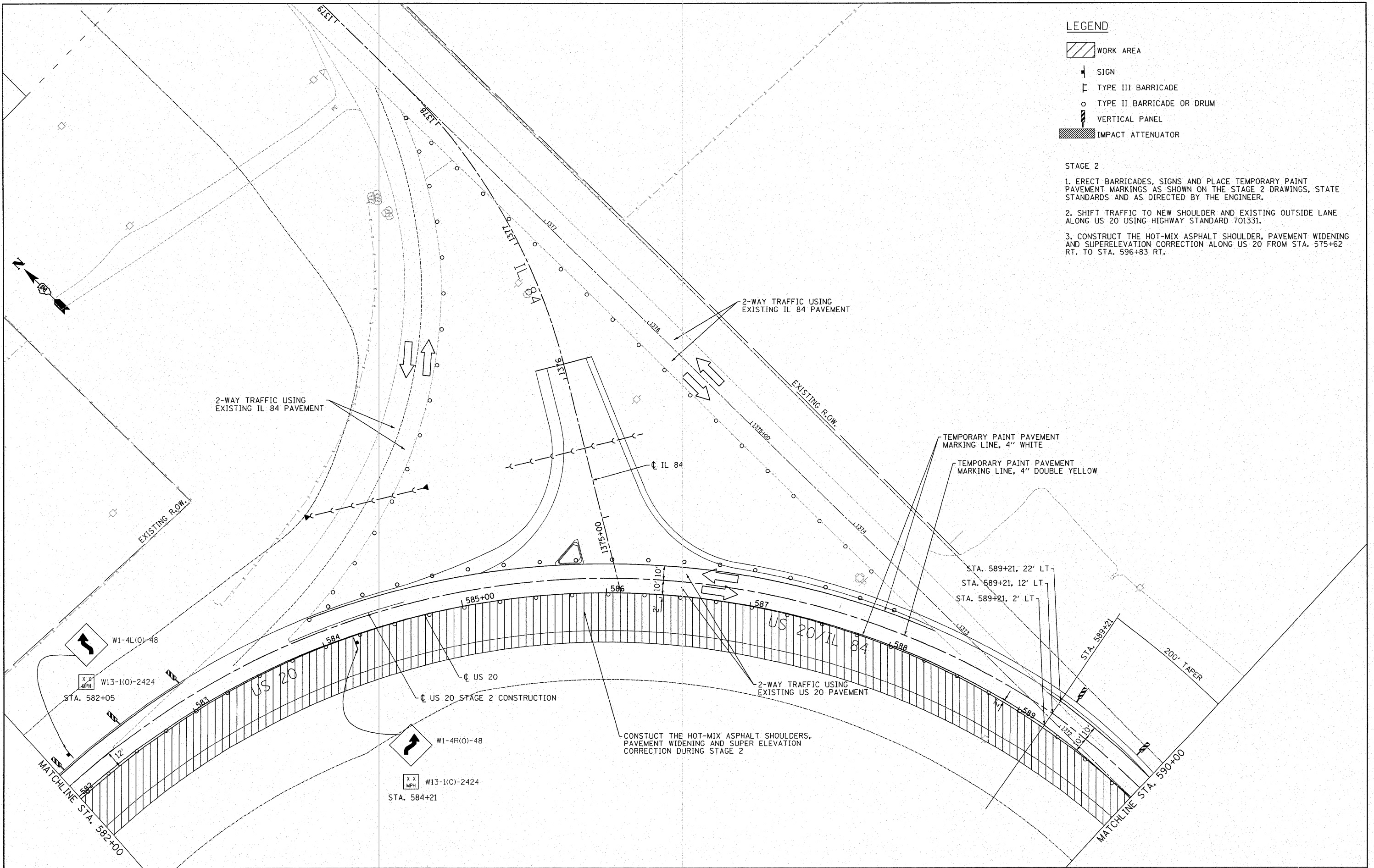


LEGEND

-  WORK AREA
-  SIGN
-  TYPE III BARRICADE
-  TYPE II BARRICADE OR DRUM
-  VERTICAL PANEL
-  IMPACT ATTENUATOR

STAGE 2

1. ERECT BARRICADES, SIGNS AND PLACE TEMPORARY PAINT PAVEMENT MARKINGS AS SHOWN ON THE STAGE 2 DRAWINGS, STATE STANDARDS AND AS DIRECTED BY THE ENGINEER.
2. SHIFT TRAFFIC TO NEW SHOULDER AND EXISTING OUTSIDE LANE ALONG US 20 USING HIGHWAY STANDARD 701331.
3. CONSTRUCT THE HOT-MIX ASPHALT SHOULDER, PAVEMENT WIDENING AND SUPERELEVATION CORRECTION ALONG US 20 FROM STA. 575+62 RT. TO STA. 596+83 RT.



FILE NAME =	USER NAME = IDOTCAD	DESIGNED - SPF	REVISED -
W:\2298-03 - US 20 IL 84 Intersection\000 Sheets\0208108-shr-staging2.dgn		DRAWN - AJP	REVISED -
PLOT SCALE = 30,0000 / IN.		CHECKED - JMS	REVISED -
PLOT DATE = 1/22/2009		DATE - 01/23/09	REVISED -

**STATE OF ILLINOIS
DEPARTMENT OF TRANSPORTATION**

TRAFFIC STAGING PLAN STAGE 2 - US 20

SCALE: 1"=30' SHEET NO. 03 OF 04 SHEETS STA. TO STA.

F.A.P. RTE.	SECTION	COUNTY	TOTAL SHEETS	SHEET NO.
301	30-M-2	JoDAVIESS	81	30
CONTRACT NO. 64E29				
FED. ROAD DIST. NO. ILLINOIS FED. AID PROJECT				