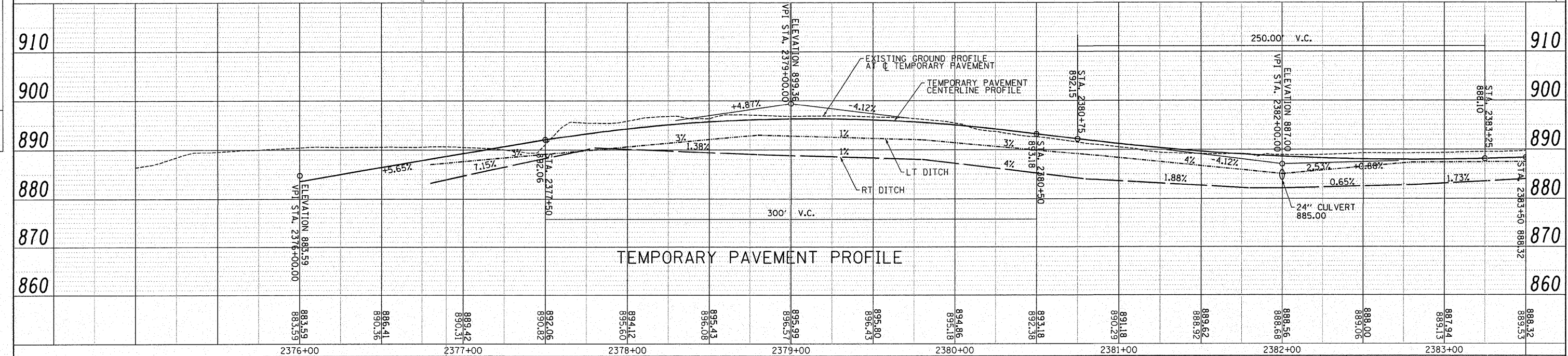
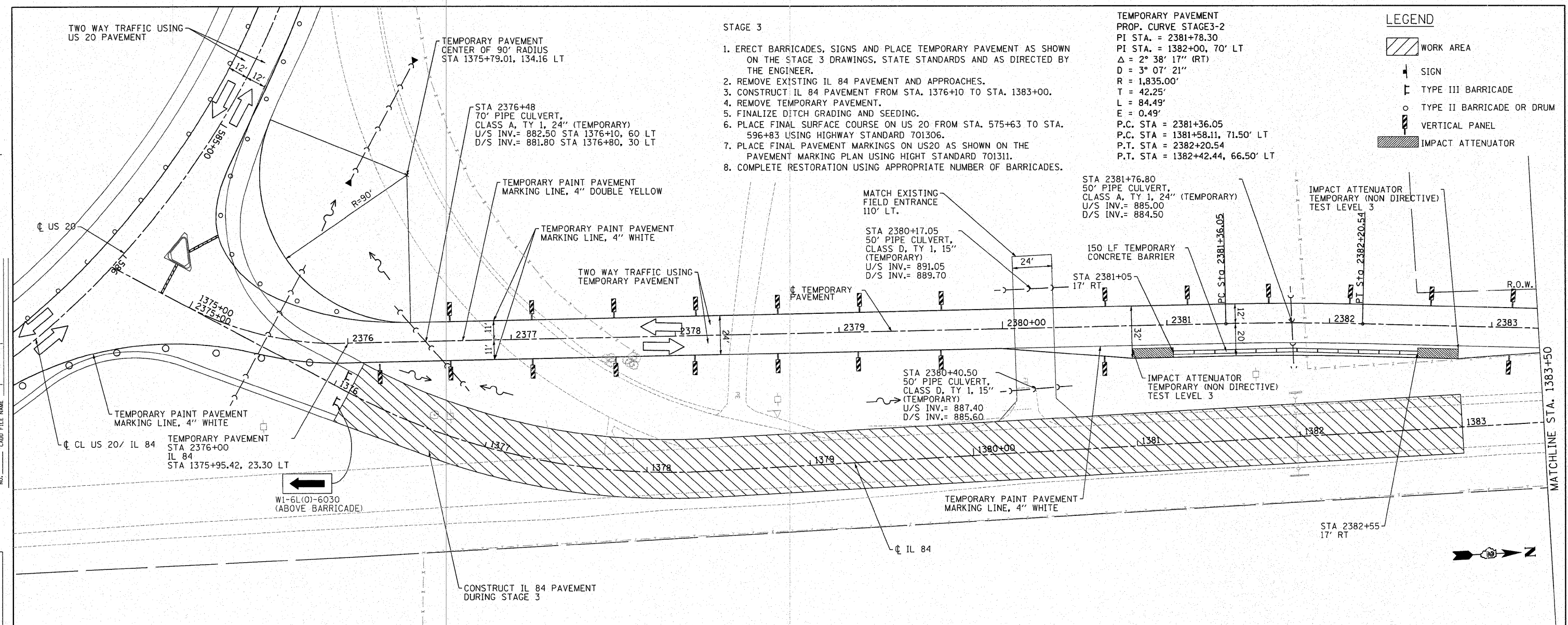


**LEGEND**

- WORK AREA
- SIGN
- TYPE III BARRICADE
- TYPE II BARRICADE OR DRUM
- VERTICAL PANEL
- IMPACT ATTENUATOR

- STAGE 3**
1. ERECT BARRICADES, SIGNS AND PLACE TEMPORARY PAVEMENT AS SHOWN ON THE STAGE 3 DRAWINGS, STATE STANDARDS AND AS DIRECTED BY THE ENGINEER.
  2. REMOVE EXISTING IL 84 PAVEMENT AND APPROACHES.
  3. CONSTRUCT IL 84 PAVEMENT FROM STA. 1376+10 TO STA. 1383+00.
  4. REMOVE TEMPORARY PAVEMENT.
  5. FINALIZE DITCH GRADING AND SEEDING.
  6. PLACE FINAL SURFACE COURSE ON US 20 FROM STA. 575+63 TO STA. 596+83 USING HIGHWAY STANDARD 701306.
  7. PLACE FINAL PAVEMENT MARKINGS ON US20 AS SHOWN ON THE PAVEMENT MARKING PLAN USING HIGHT STANDARD 701311.
  8. COMPLETE RESTORATION USING APPROPRIATE NUMBER OF BARRICADES.

**TEMPORARY PAVEMENT PROP. CURVE STAGE3-2**  
 PI STA. = 2381+78.30  
 PI STA. = 1382+00, 70' LT  
 $\Delta = 2^\circ 38' 17''$  (RT)  
 $D = 3^\circ 07' 21''$   
 $R = 1,835.00'$   
 $T = 42.25'$   
 $L = 84.49'$   
 $E = 0.49'$   
 P.C. STA = 2381+36.05  
 P.C. STA = 1381+58.11, 71.50' LT  
 P.T. STA = 2382+20.54  
 P.T. STA = 1382+42.44, 66.50' LT



DATE	BY	SURVEYED	PLANNED
NOTE BOOK NO.	ALIGNMENT CHECKED	CAD FILE NAME	

DATE	BY	SURVEYED	PROFILE
NOTE BOOK NO.	GRADES CHECKED	STRUCTURE NOTATIONS CHRD	

FILE NAME =	USER NAME = IDOTCAD	DESIGNED -	SPF	REVISED -		<b>STATE OF ILLINOIS</b> <b>DEPARTMENT OF TRANSPORTATION</b>	<b>TRAFFIC STAGING PLAN STAGE 3 - IL 84</b>		F.A. RTE.	SECTION	COUNTY	TOTAL SHEETS	SHEET NO.
W:\2298-03 - US 20 IL 84 Intersection\CAD	Sheets\0208108-sht-staging3.dgn	DRAWN -	AJP	REVISED -			301	30-M-2	JoDAVIESS	81	32		
PLOT SCALE = 30.0000' / IN.		CHECKED -	JMS	REVISED -			CONTRACT NO. 64E29						
PLOT DATE = 1/22/2009		DATE -	01/23/09	REVISED -			FED. ROAD DIST. NO.	ILLINOIS	FED. AID PROJECT				