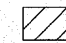

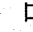
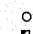


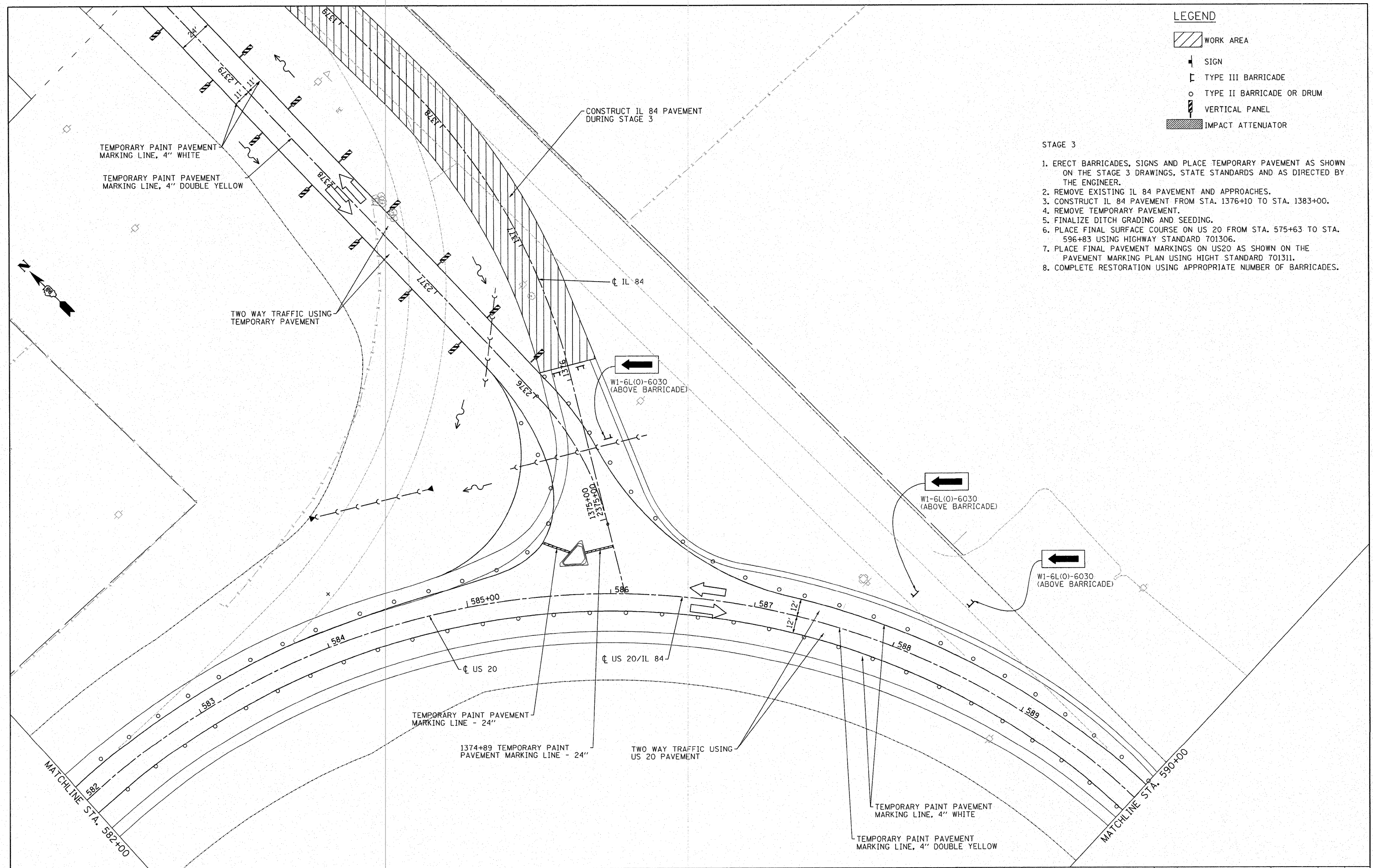


**LEGEND**

-  WORK AREA
-  SIGN
-  TYPE III BARRICADE
-  TYPE II BARRICADE OR DRUM
-  VERTICAL PANEL
-  IMPACT ATTENUATOR

**STAGE 3**

1. ERECT BARRICADES, SIGNS AND PLACE TEMPORARY PAVEMENT AS SHOWN ON THE STAGE 3 DRAWINGS, STATE STANDARDS AND AS DIRECTED BY THE ENGINEER.
2. REMOVE EXISTING IL 84 PAVEMENT AND APPROACHES.
3. CONSTRUCT IL 84 PAVEMENT FROM STA. 1376+10 TO STA. 1383+00.
4. REMOVE TEMPORARY PAVEMENT.
5. FINALIZE DITCH GRADING AND SEEDING.
6. PLACE FINAL SURFACE COURSE ON US 20 FROM STA. 575+63 TO STA. 596+83 USING HIGHWAY STANDARD 701306.
7. PLACE FINAL PAVEMENT MARKINGS ON US20 AS SHOWN ON THE PAVEMENT MARKING PLAN USING HIGH STANDARD 701311.
8. COMPLETE RESTORATION USING APPROPRIATE NUMBER OF BARRICADES.



FILE NAME = W:\2298-03 - US 20 IL 84 Intersection\CAD Sheets\0208108-sht-staging3.dgn	USER NAME = IDOTCAD	DESIGNED - SPF	REVISED -	<b>STATE OF ILLINOIS</b> <b>DEPARTMENT OF TRANSPORTATION</b>	<b>TRAFFIC STAGING PLAN STAGE 3 - US 20</b>			F.A.P. RTE. 301	SECTION 30-M-2	COUNTY JoDAVISS	TOTAL SHEETS 81	SHEET NO. 35	
	PLOT SCALE = 30.0000' / IN.	CHECKED - JMS	REVISED -		SCALE: 1"=30'	SHEET NO. 04 OF 05 SHEETS	STA.	TO STA.	CONTRACT NO. 64E29				
	PLOT DATE = 1/22/2009	DATE - 01/23/09	REVISED -		FED. ROAD DIST. NO.	ILLINOIS FED. AID PROJECT							