

F.A.P. RTE.	SECTION	COUNTY	TOTAL SHEETS	SHEET NO.
561	(32-4)M-2	WHITESIDE	34	1
FED. ROAD DIST. NO.	ILLINOIS	CONTRACT NO. 64E58		

STATE OF ILLINOIS  
DEPARTMENT OF TRANSPORTATION  
DIVISION OF HIGHWAYS  
**PROPOSED  
HIGHWAY PLANS**

FAP ROUTE 561 (IL 2)  
SECTION (32-4)M-2  
PROJECT HSIP-0561(028)  
WHITESIDE COUNTY

C-92-044-09



D-92-001-09



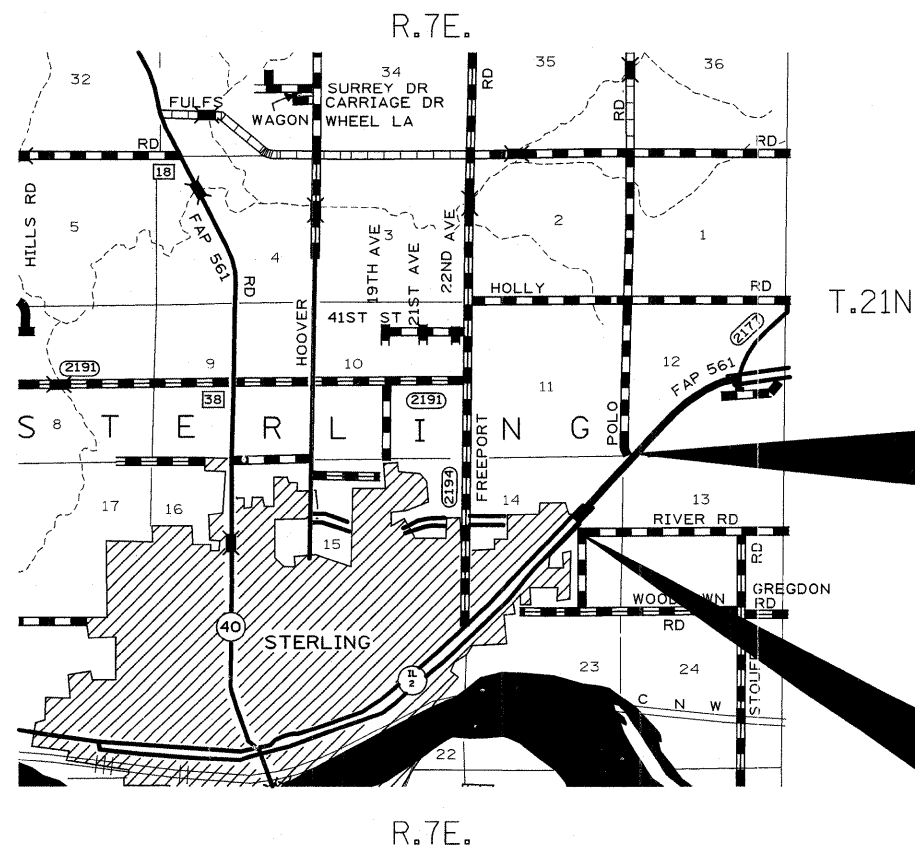
LOCATION OF SECTION INDICATED THUS: - [shaded box] -

**INDEX**

- 1 COVER SHEET
- 2-4 SUMMARY OF QUANTITIES
- 5-6 GENERAL NOTES
- 7 TYPICAL SECTIONS
- 8-9 SCHEDULE OF QUANTITIES
- 10 BITUMINOUS SCHEDULE
- 11-12 HORIZONTAL & VERTICAL CONTROL
- 13-16 PLAN & PROFILE
- 17-18 TRAFFIC SIGNAL PLANS
- 19-20 STAGING PLANS
- 21 SIGNING DETAILS
- 22 CONCRETE MEDIAN DETAIL
- 23 INLET SPECIAL NO.5 (79.4b)  
NOSE TYPE FOR INLET TOP SLAB (79.4d)  
INLET SPECIAL NO.3,4,5,6 REINFORCEMENT DETAIL (79.4e)
- 24-26 TYPICAL PAVEMENT MARKINGS (41.1)
- 27-34 CROSS SECTIONS

**STATE STANDARDS**

- 000001-05 STANDARD SYMBOLS, ABBREVIATIONS AND PATTERNS
- 001006 DECIMAL OF AN INCH AND A FOOT
- 280001-04 TEMPORARY EROSION CONTROL SYSTEMS
- 420001-07 PAVEMENT JOINTS
- 421001-02 BAR REINFORCEMENT FOR CRC PAVEMENT
- 442001-04 CLASS A PATCHES
- 602401-02 MANHOLE TYPE A
- 604001-03 FRAME AND LIDS TYPE 1
- 606001-04 CONCRETE CURB TYPE B AND COMBINATION CONCRETE CURB AND GUTTER
- 606301-04 PC CONCRETE ISLANDS AND MEDIANS
- 701101-02 TYPICAL APPLICATION OF TRAFFIC CONTROL STANDARD
- 701201-03 TYPICAL APPLICATION OF TRAFFIC CONTROL STANDARD
- 701301-03 TYPICAL APPLICATION OF TRAFFIC CONTROL STANDARD
- 701400-03 TYPICAL APPLICATION OF TRAFFIC CONTROL STANDARD
- 701401-05 TYPICAL APPLICATION OF TRAFFIC CONTROL STANDARD
- 701406-05 TYPICAL APPLICATION OF TRAFFIC CONTROL STANDARD
- 701426-03 TYPICAL APPLICATION OF TRAFFIC CONTROL STANDARD
- 701601-06 TYPICAL APPLICATION OF TRAFFIC CONTROL STANDARD
- 701701-06 TYPICAL APPLICATION OF TRAFFIC CONTROL STANDARD
- 701901-01 TRAFFIC CONTROL DEVICES
- 720011-01 METAL POST FOR SIGNS, MARKERS AND DELINEATORS
- 720016-02 MAST ARM MOUNTED STREET NAME SIGNS
- 728001-01 TELESCOPING STEEL SIGN SUPPORT
- 729001-01 APPLICATIONS OF TYPES A & B METAL POSTS (FOR SIGNS AND MARKERS)
- 780001-02 TYPICAL PAVEMENT MARKINGS
- 857001-01 STANDARD PHASE DESIGNATION DIAGRAMS AND PHASE SEQUENCES
- 873001-02 TRAFFIC SIGNAL GROUNDING & BONDING
- 877011-04 STEEL COMBINATION MAST ARM ASSEMBLY AND POLE 16' THROUGH 55'
- 878001-07 CONCRETE FOUNDATION DETAILS
- 880006-01 TRAFFIC SIGNAL MOUNTING DETAILS



**IMPROVEMENT BEGINS  
STA.160 + 92.58**

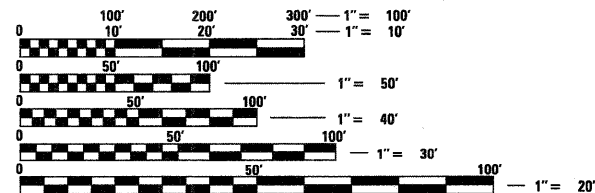
INCLUDES CONSTRUCTION OF OFFSET TURN LANE  
AND SOME RESURFACING

**IMPROVEMENT ENDS  
STA.171 + 93.55**

**IMPROVEMENT BEGINS  
STA.128 + 84.14**

INCLUDES CONSTRUCTION OF OFFSET TURN LANE  
AND SOME RESURFACING

**IMPROVEMENT ENDS  
STA.139 + 18.66**



FULL SIZE PLANS HAVE BEEN PREPARED USING STANDARD ENGINEERING SCALES. REDUCED SIZED PLANS WILL NOT CONFORM TO STANDARD SCALES. IN MAKING MEASUREMENTS ON REDUCED PLANS, THE ABOVE SCALES MAY BE USED.

J.U.L.I.E.  
JOINT UTILITY LOCATION INFORMATION FOR EXCAVATION  
1-800-892-0123  
OR 811

**CONTRACT NO. 64E58**

STERLING TOWNSHIP, SECTION 11,12,13,14

GROSS LENGTH OF PROJECT = 4,309 LIN. FT. = 0.82 MILES  
NET LENGTH OF PROJECT = 2,135 LIN. FT. = 0.40 MILES

STATE OF ILLINOIS  
DEPARTMENT OF TRANSPORTATION  
DIVISION OF HIGHWAYS

SUBMITTED 11/23 2009

*Debra F. Brown*  
DEPUTY DIRECTOR OF HIGHWAYS, REGION ENGINEER

March 27, 2009  
*Charles J. Ingersoll*  
ENGINEER OF DESIGN AND ENVIRONMENT

March 27, 2009  
*Christine M. Reed*  
DIRECTOR OF HIGHWAYS, CHIEF ENGINEER

**PRINTED BY THE AUTHORITY  
OF THE STATE OF ILLINOIS**

PROJECT ENGINEER: REBECCA MARRUFFO

SQUAD LEADER: BRAD CUSHMAN (815)-284-5996