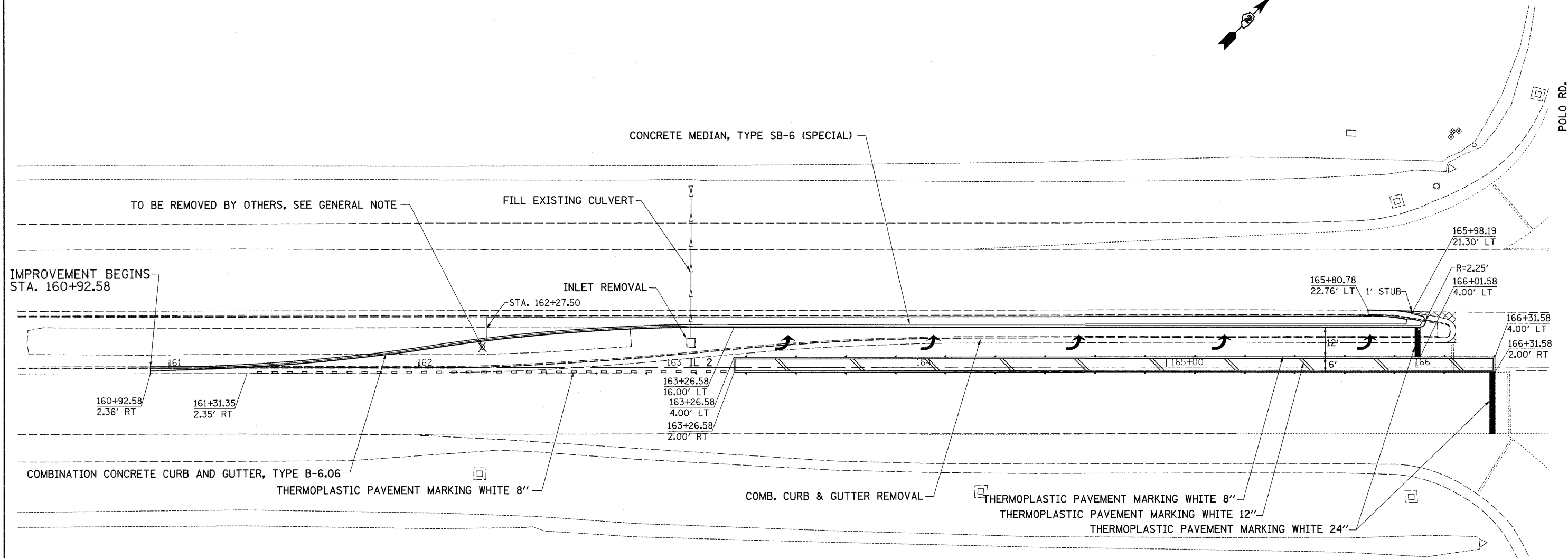
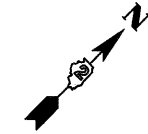


IL 2 / POLO RD.



STA. 160+92.58 to 166+15.65
 EARTH EX. = 269.5 CU.YDS.
 EMB. = 0.3 CU.YDS.
 WASTE = 201.8 CU.YDS.

 PAVEMENT REMOVAL

FILE NAME = c:\pwwork\pwwork\cushmanbw\dms51082\0200109-aht-plan.dgn	USER NAME = cushmanbw	DESIGNED -	REVISED -	STATE OF ILLINOIS DEPARTMENT OF TRANSPORTATION	IL 2 / POLO RD.				F.A. RTE. 561	SECTION (32-4M-2)	COUNTY WHITESIDE	TOTAL SHEETS 34	SHEET NO. 15
PLOT SCALE = 20,0000' / IN.		DRAWN -	REVISED -		SCALE:	SHEET NO.	OF	SHEETS	STA.	TO STA.	CONTRACT NO. 64E58		
PLOT DATE = Fri Jan 23 06:59:42 2009		CHECKED -	REVISED -		FED. ROAD DIST. NO. ILLINOIS FED. AID PROJECT								
		DATE -	REVISED -										