

STATE OF ILLINOIS
DEPARTMENT OF TRANSPORTATION
DIVISION OF HIGHWAYS

**PROPOSED
HIGHWAY PLANS**

FAI 39 (I-39)
SECTION (141-1)M-1
PROJECT HSIP-039-1(020)098
RAMP RECONSTRUCTION
OGLE COUNTY
C-92-061-09

F.A.I. RTE.	SECTION	COUNTY	TOTAL SHEETS	SHEET NO.
39	(141-1)M-1	OGLE	82	1
FED. ROAD DIST. NO.		ILLINOIS	CONTRACT NO. 64E60	

D-92-003-09



FOR INDEX OF SHEETS, SEE SHEET NO. 2
FOR STATE STANDARDS, SEE SHEET NO. 2

DESIGN DESIGNATION
55D(29) - INTERSTATE ENT. RAMP - 9.32(FD-20)

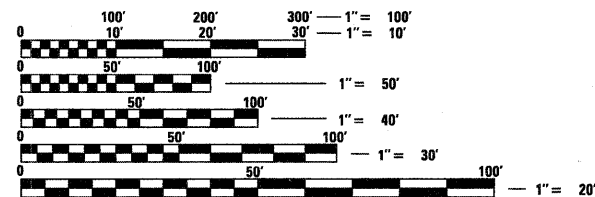
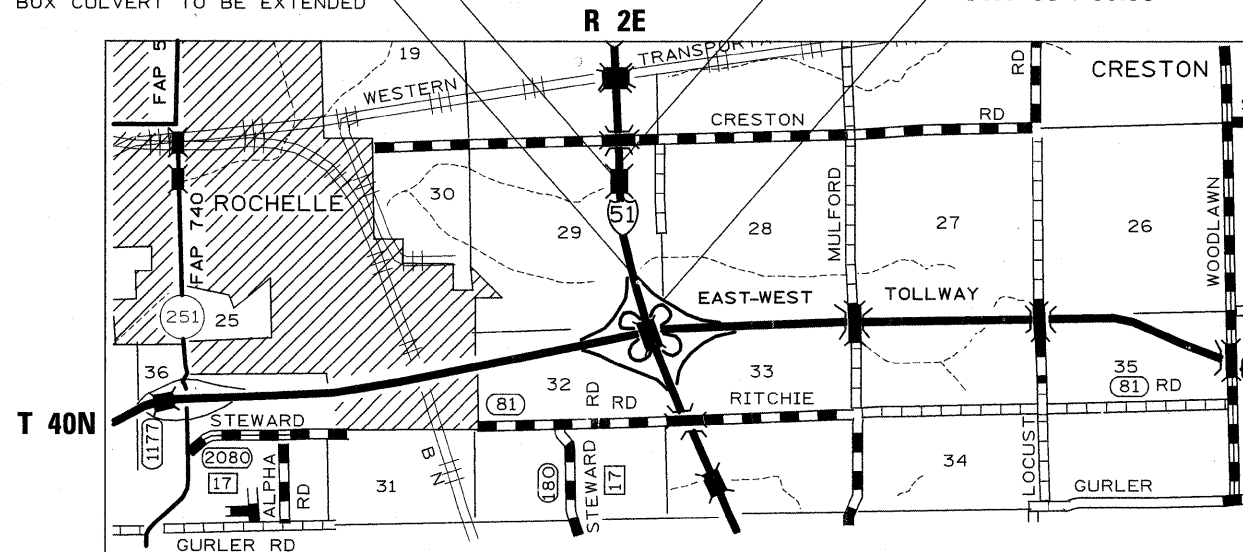
DEMENT TOWNSHIP 28 & 29

EXISTING SNO71-1091
DOUBLE CELL 8'x5' RC
BOX CULVERT TO BE EXTENDED

EXISTING SNO71-2015
DOUBLE CELL 12'x6' RC
BOX CULVERT TO BE EXTENDED

SECTION ENDS
STA 70+12.78

SECTION BEGINS
STA 38+66.50



FULL SIZE PLANS HAVE BEEN PREPARED USING STANDARD ENGINEERING SCALES. REDUCED SIZED PLANS WILL NOT CONFORM TO STANDARD SCALES. IN MAKING MEASUREMENTS ON REDUCED PLANS, THE ABOVE SCALES MAY BE USED.

J.U.L.I.E.
JOINT UTILITY LOCATION INFORMATION FOR EXCAVATION
1-800-892-0123
OR 811

PROJECT ENGINEER: MASOOD AHMAD
SENIOR SQUAD LEADER: SAM ABDULLAH (815) 284-5935
SQUAD LEADER: JASON STRINGER (815) 284-5513
CONTRACT NO. 64E60

GROSS LENGTH = 3,146.28 FT. = 0.60 MILE
NET LENGTH = 3,146.28 FT. = 0.60 MILE

STATE OF ILLINOIS
DEPARTMENT OF TRANSPORTATION
DIVISION OF HIGHWAYS

SUBMITTED 1/23 2009

James E. [Signature]
DEPUTY DIRECTOR OF HIGHWAYS, REGION ENGINEER

March 27, 2009
Charles G. Ingersoll [Signature]
ENGINEER OF DESIGN AND ENVIRONMENT

March 27, 2009
Christine M. Reed [Signature]
DIRECTOR OF HIGHWAYS, CHIEF ENGINEER

PRINTED BY THE AUTHORITY
OF THE STATE OF ILLINOIS