

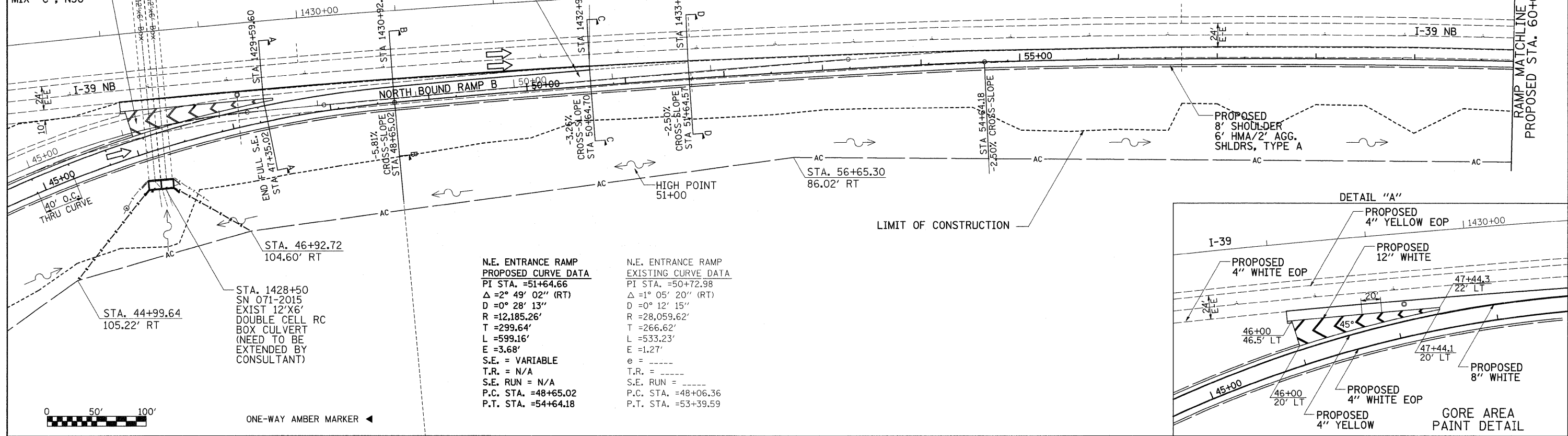
INTERSTATE ROUTE 39
 EXISTING CURVE DATA
 PI STA. =1427+93.26
 Δ =22° 37' 52" (RT)
 D =0° 28' 00"
 R =12,277.70'
 T =2,456.79'
 L =4,849.52'
 E =243.39'
 S.E. = 0.0233''
 P.C. STA. =1403+36.48
 P.T. STA. =1451+86.00

HMA SHLDRS 6"
 AND 2" HMA
 SURFACE COURSE
 MIX "C", N50

HMA PAVEMENT
 (FULL DEPTH) 14"

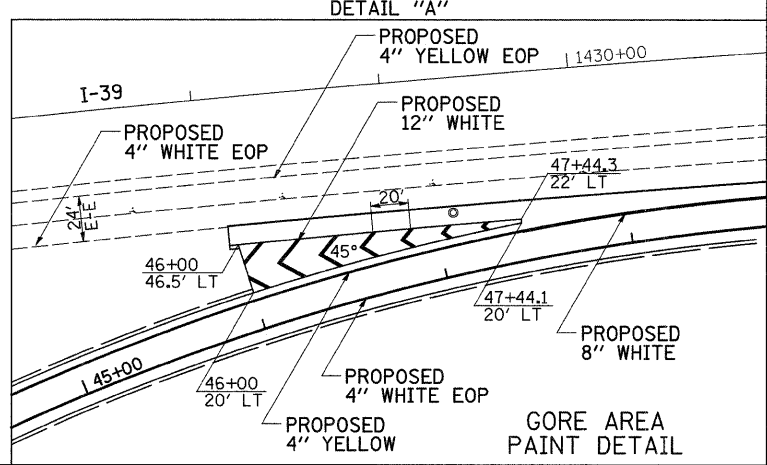


DATE	
BY	
REVISIONS	
NO.	
DATE	
BY	
REVISIONS	
NO.	
DATE	
BY	
REVISIONS	
NO.	

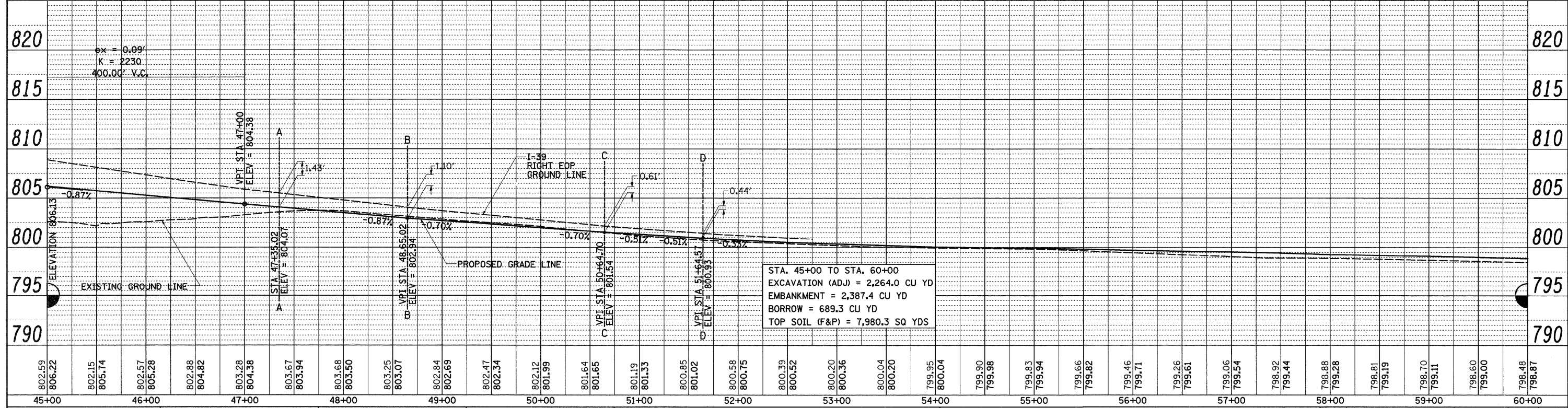


N.E. ENTRANCE RAMP
 PROPOSED CURVE DATA
 PI STA. =51+64.66
 Δ =2° 49' 02" (RT)
 D =0° 28' 13"
 R =12,185.26'
 T =299.64'
 L =599.16'
 E =3.68'
 S.E. = VARIABLE
 T.R. = N/A
 S.E. RUN = N/A
 P.C. STA. =48+65.02
 P.T. STA. =54+64.18

N.E. ENTRANCE RAMP
 EXISTING CURVE DATA
 PI STA. =50+72.98
 Δ =1° 05' 20" (RT)
 D =0° 12' 15"
 R =28,059.62'
 T =266.62'
 L =533.23'
 E =1.27'
 S.E. =
 T.R. =
 S.E. RUN =
 P.C. STA. =48+06.36
 P.T. STA. =53+39.59



DATE	
BY	
REVISIONS	
NO.	
DATE	
BY	
REVISIONS	
NO.	
DATE	
BY	
REVISIONS	
NO.	



FILE NAME =	USER NAME = stringerjm	DESIGNED -	REVISED -	STATE OF ILLINOIS DEPARTMENT OF TRANSPORTATION	PLAN & PROFILE FOR THE NORTHBOUND ENTRANCE RAMP TO I-39 FROM I-88	F.A.I. RTE.	SECTION	COUNTY	TOTAL SHEETS	SHEET NO.
ci:\pw_work\p\WIDOT\STRINGERJM\dms84827\020309-plan_shts.dgn	PLOT SCALE = 50.0000' / IN.	DRAWN -	REVISED -			39	(141-1M-1)	OGLE	82	21
PLOT DATE = Fri Jan 23 10:02:04 2009	DATE -	CHECKED -	REVISED -			CONTRACT NO. 64E60				
		DATE -	REVISED -			FED. ROAD DIST. NO. ILLINOIS FED. AID PROJECT				