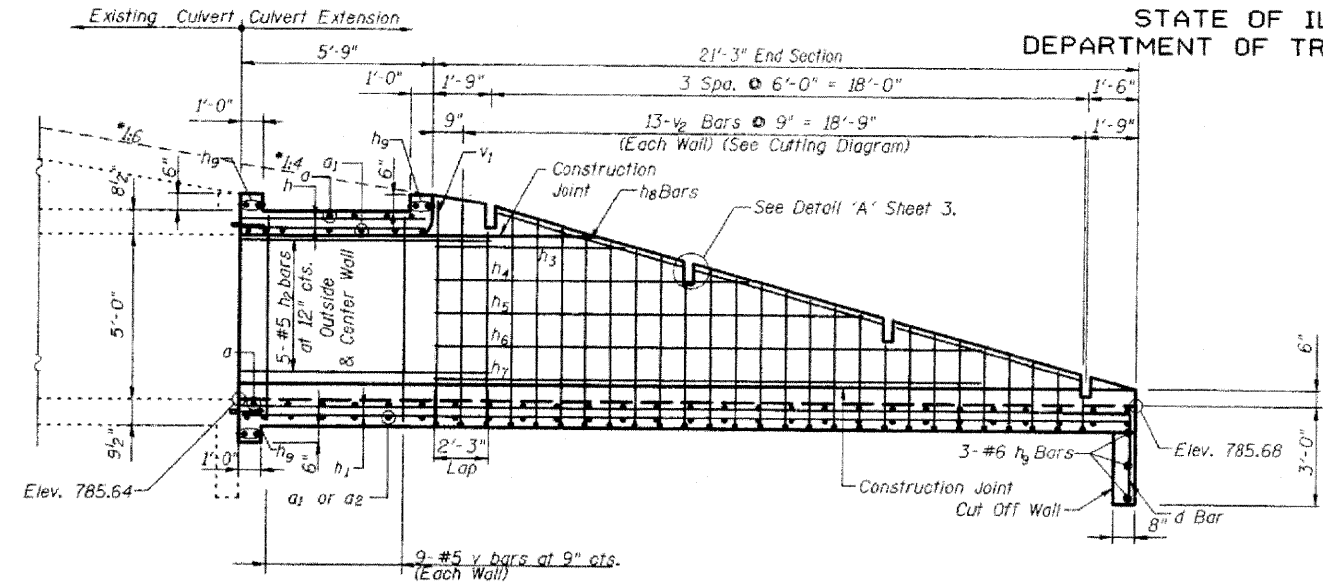
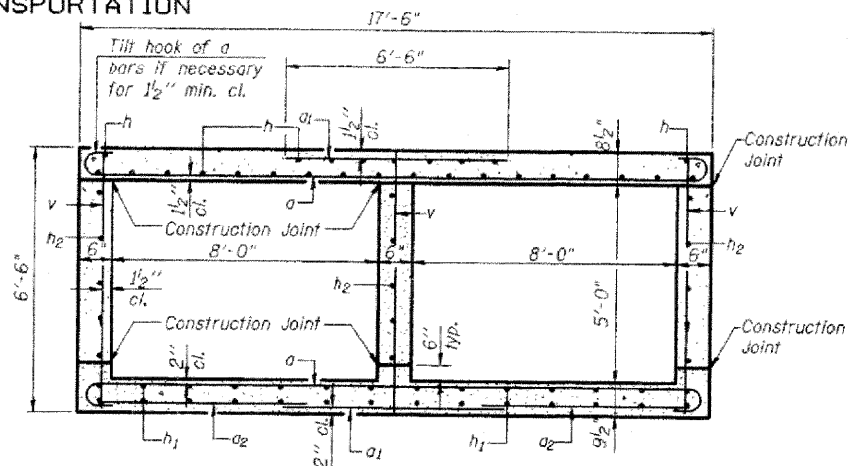


STATE OF ILLINOIS
DEPARTMENT OF TRANSPORTATION



ELEVATION
*Measured 1 to Roadway



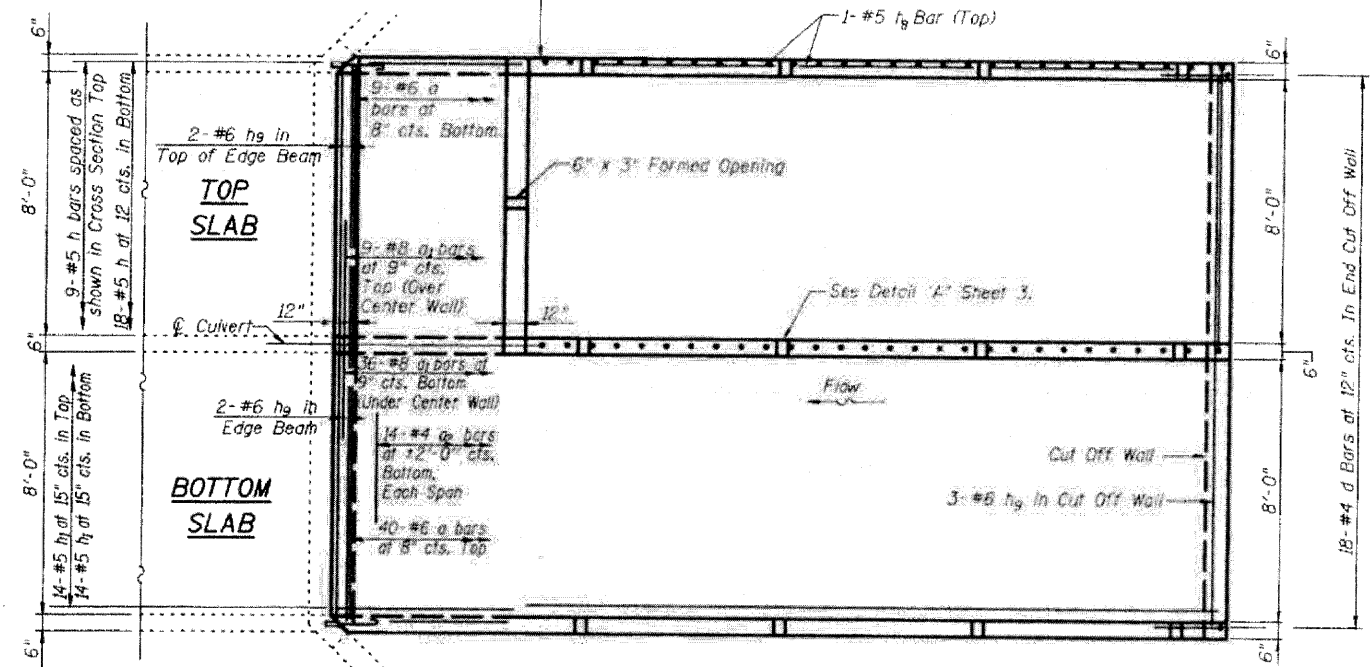
SECTION A-A THRU BARREL

BILL OF MATERIAL

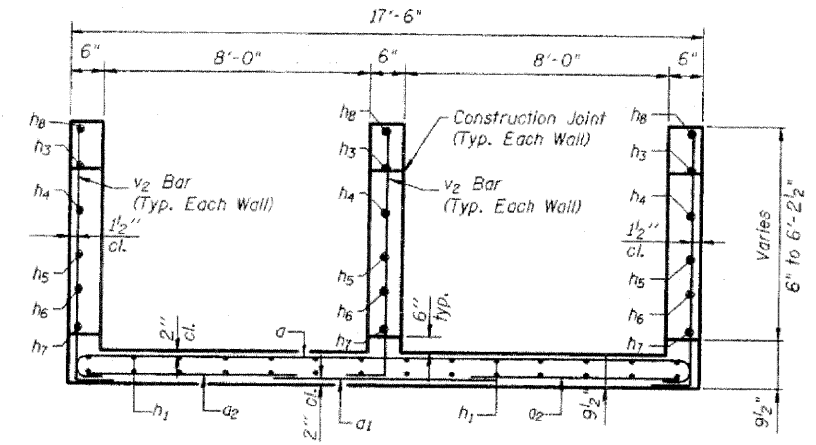
Bar	No.	Size	Length	Shape
a	49	#6	18'-6"	U
a1	45	#8	6'-6"	U
a2	28	#4	6'-3"	U
d	18	#4	4'-6"	U
h	27	#5	5'-6"	U
h1	28	#5	26'-9"	U
h2	15	#5	8'-0"	U
h3	3	#5	4'-9"	U
h4	3	#5	8'-6"	U
h5	3	#5	12'-6"	U
h6	3	#5	16'-0"	U
h7	3	#5	20'-0"	U
h8	9	#5	5'-6"	U
h9	9	#6	17'-0"	U
v	27	#5	6'-2"	U
v1	3	#5	7'-6"	U
v2	39	#5	9'-5"	U

Concrete Box Culverts Cu. Yd. 24.0
Reinforcement Bars Pound 4,430

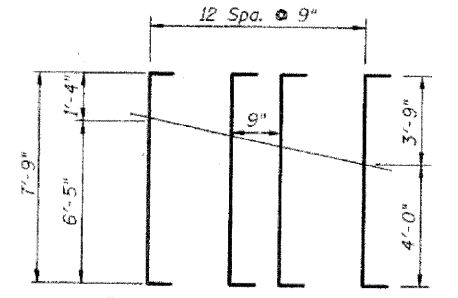
Bill of materials includes all reinforcing and concrete necessary for end section.



PLAN

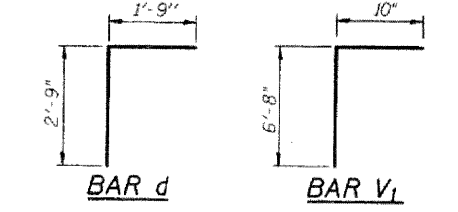


SECTION B-B THRU END SECTION



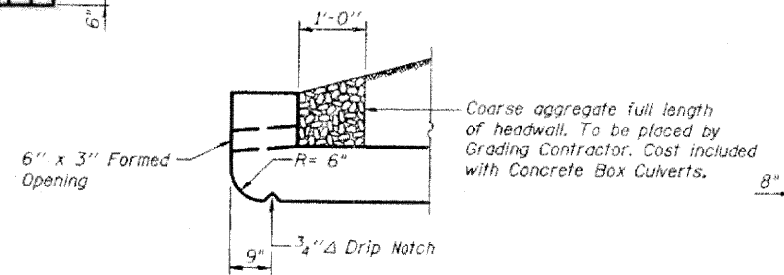
BAR V2

NOTE: Cut bars as shown and use remainder in other end of wall. Adjust spacing to provide 1/2" horizontal clearance at pipe notches.



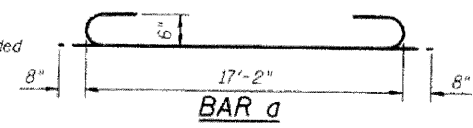
BAR d

BAR V1



AT UPSTREAM END

DRAIN DETAIL



BAR a

**CULVERT EXTENSION
PLAN AND ELEVATION
STRUCTURE NO. 071-1091**

DESIGNED PRD
CHECKED WAT
DRAWN CJS
CHECKED PRD

Notes: See Sheet No. 3 for Connection Section.

DLZ 85 W. Algonquin Rd. Ste. 220
Arlington Heights IL 60005

SHEET NO. 2	F.A. RTE. 412	SECTION (141-1) M-1	COUNTY OGLE	TOTAL SHEETS 82	SHEET NO. 36
SHEETS 4			CONTRACT NO. 64E60		
FED. ROAD DIST. NO.		ILLINOIS FED. AID PROJECT			