

F.A.P. RTE.	SECTION	COUNTY	TOTAL SHEETS	SHEET NO.
IL 75	(77BR)M	WINNEBAGO	13	1

D-92-015-09

INDEX OF SHEETS

SHEET NO.	DESCRIPTION
1.	COVER SHEET
2.	SUMMARY OF QUANTITIES
3.	GENERAL NOTES
4.	EXISTING PLAN
5.	STAGE CONSTRUCTION PLAN
6.	GENERAL REPAIR PLAN
7.	PREFORMED JOINT STRIP SEAL
8.	JOINT DETAILS
9.	RAILING AND SIDEWALK REPAIRS
10.	BAR SPLICER ASSEMBLY DETAILS
11.	TRAFFIC CONTROL AND PROTECTION APPROACHES
12.	TRAFFIC CONTROL AND PROTECTION TAPERS AND WORK AREA
13.	DISTRICT 2 SIGN DETAILS

STATE OF ILLINOIS DEPARTMENT OF TRANSPORTATION DIVISION OF HIGHWAYS PLANS FOR MISCELLANEOUS BRIDGE DECK REPAIRS SN 101-0109 CARRYING ILLINOIS 75 OVER ROCK RIVER FAP 505 (IL 75), SECTION (77BR)M WINNEBAGO COUNTY

64E67
C-92-106-09

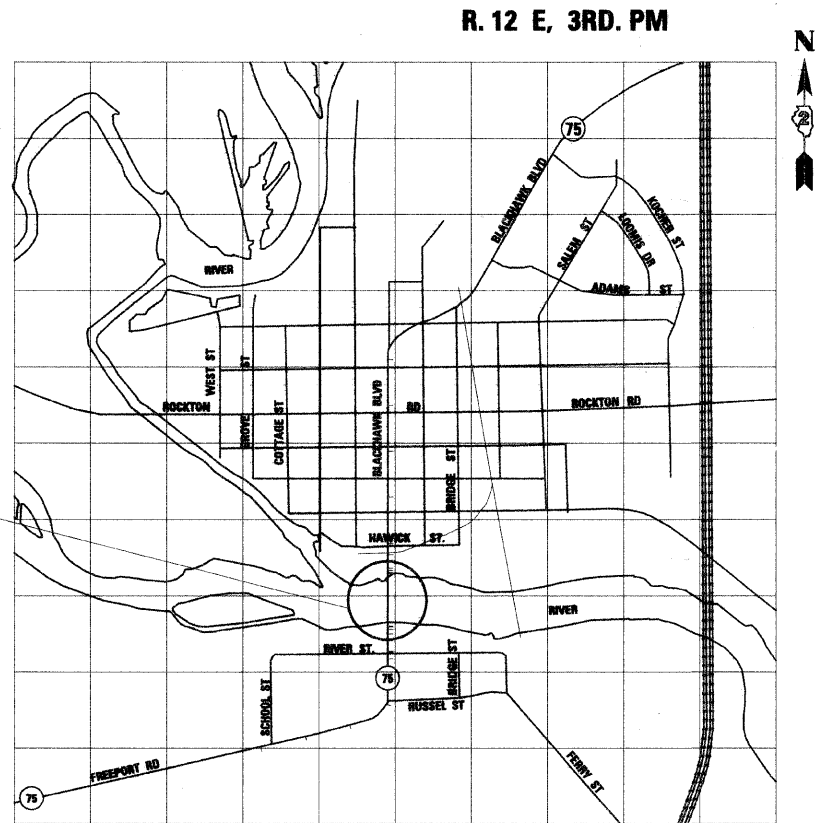


FUNCTIONAL CLASSIFICATION: MAJOR COLLECTOR (NON-URBAN)
DESIGN SPEED : 30 MPH
POSTED SPEED : 30 MPH
ADT : 35700 (2005)
PV : 85%
SU : 10%
MU : 5%

STANDARDS

- 701006-03 OFF-RD OPERATIONS, 2L, 2W, 15'(4.5m) TO 24" (600mm) FROM PAVEMENT EDGE
- 701101-02 OFF RD OPERATIONS MULTILANE 15'(4.5 m) TO 6" (600 mm) FROM PAVEMENT EDGE
- 701201-03 LANE CLOSURE, 2L, 2W, DAY ONLY, FOR SPEEDS>45 MPH
- 701301-03 LANE CLOSURE, 2L, 2W, SHORT TIME OPERATIONS
- 701311-03 LANE CLOSURE, 2L, 2W, MOVING OPERATIONS, DAY ONLY
- 701321-10 LANE CLOSURE, 2L, 2W, BRIDGE REPAIR WITH BARRIER
- 701801-04 LANE CLOSURE MULTILANE 1W OR 2W CROSSWALK OR SIDEWALK CLOSURE
- 701901-01 TRAFFIC CONTROL DEVICES
- 704001-05 TEMPORARY CONCRETE BARRIER
- 720011-01 METAL POST FOR SIGNS, MARKERS & DELINEATORS
- 728001-01 TELESCOPING STEEL SIGN SUPPORT
- 729001-01 APPLICATIONS OF TYPES A & B METAL POSTS (FOR SIGNS & MARKERS)
- 780001-02 TYPICAL PAVEMENT MARKINGS

PROJECT LOCATION
INCLUDES EXPANSION JOINT REPLACEMENT
BRIDGE DECK WEARING SURFACE
REMOVAL AND REPLACEMENT
CONCRETE REPAIRS TO SIDEWALK AND RAILING
STR. NO. 101-0109 AT STA. 208+00



JULIE 1-800-892-0123

DISTRICT 2
TOWNSHIP: ROCKFORD
CONTRACT NO. 64E67
JOB NO. D-92-015-09

PLANS PREPARED BY: SOODAN & ASSOCIATES, INC.
 100 NORTH LASALLE ST., SUITE 1800
 CHICAGO, ILLINOIS 60602



Hakim H. Taiyebi
HAKIM H. TAIYEBI
 ILLINOIS LICENSED
 STRUCTURAL ENGINEER
 NO. 081-003266
 LICENSE EXP. 11-30-10

**STATE OF ILLINOIS
DEPARTMENT OF TRANSPORTATION
DIVISION OF HIGHWAYS**

SUBMITTED *Feb. 13, 2009*
George F. Ryan
 DEPUTY DIRECTOR OF HIGHWAYS, REGION ENGINEER

March 27, 2009
Charles G. Ingwersell
 ENGINEER OF DESIGN AND ENVIRONMENT

March 27, 2009
Christine M. Reed
 DIRECTOR OF HIGHWAYS, CHIEF ENGINEER

**PRINTED BY THE AUTHORITY
OF THE STATE OF ILLINOIS**

STATE OF ILLINOIS
DEPARTMENT OF TRANSPORTATION

SUMMARY OF QUANTITIES

ROUTE NO.	SECTION	COUNTY	TOTAL SHEETS	SHEET NO.
IL 75	(77BRIM)	WINNEBAGO	13	2
FED. ROAD DIST. NO. 7		ILLINOIS	FED. AID PROJECT-	
CONTRACT 6467				

CODE NO.	ITEM	UNIT	QUANTITY		100% STATE TOTAL
			X081-2A BRIDGE	I000-2A ROADWAY	
42001300	PROTECTIVE COAT	SQ YD	554		554
50102400	CONCRETE REMOVAL	CU. YD.	48		48
50300255	CONCRETE SUPERSTRUCTURE	CU. YD.	48		48
52000110	PREFORMED JOINT STRIP SEAL	FOOT	114		114
50800205	REINFORCEMENT BARS, EPOXY COATED	POUND	13,940		13,940
40603340	HOT-MIX ASPHALT SURFACE COURSE, MIX "D", N70	TON	175	27	202
44000155	HOT-MIX ASPHALT SURFACE REMOVAL, 1 1/2"	SQ. YD.	1,975		1,975
40600100	BITUMINOUS MATERIALS (PRIME COAT)	GALLON		28	28
58100200	WATERPROOFING MEMBRANE SYSTEM	SQ. YD.	1,975		1,975
67000400	ENGINEER'S FIELD OFFICE, TYPE A	CAL MO		4	4
67100100	MOBILIZATION	L SUM		1	1
70100405	TRAFFIC CONTROL AND PROTECTION STANDARD 701321	EACH		1	1
70100450	TRAFFIC CONTROL AND PROTECTION STANDARD 701201	EACH		1	1
70102640	TRAFFIC CONTROL AND PROTECTION STANDARD 701801	EACH		1	1
70106500	TEMPORARY BRIDGE TRAFFIC SIGNALS	EACH		1	1
70300220	TEMPORARY PAVEMENT MARKING-LINE 4"	FOOT		3,750	3,750
70300280	TEMPORARY PAVEMENT MARKING-LINE 24"	FOOT		50	50
* 78001110	PAINT PAVEMENT MARKING LINE 4"	FOOT		2,250	2,250
70300100	SHORT TERM PAVEMENT MARKING	FOOT		2,250	2,250
70301000	WORK ZONE PAVEMENT MARKING REMOVAL	FOOT		750	750
78300100	PAVEMENT MARKING REMOVAL	SQ. FT.		553	553
70400100	TEMPORARY CONCRETE BARRIER	FOOT		770	770
70400200	RELOCATE TEMPORARY CONCRETE BARRIER	FOOT		770	770
50800515	BAR SPLICERS	EACH	50		50
Z0016200	DECK SLAB REPAIR (PARTIAL DEPTH)	SQ. YD.	445		445
Z0029100	GRINDING BITUMINOUS SURFACE CONCRETE	SQ. YD.		290	290
Z0030240	IMPACT ATTENUATORS, TEMPORARY (NON- REDIRECTIVE), TEST LEVEL 2	EACH		2	2
Z0030340	IMPACT ATTENUATORS, RELOCATE (NON- REDIRECTIVE), TEST LEVEL 2	EACH		2	2
X0325305	STRUCTURAL REPAIR OF CONCRETE (DEPTH LESS THAN OR EQUAL TO 5 INCHES)	SQ. FT.	3,550		3,550
50300530	FLOOR DRAIN EXTENSIONS	EACH	72		72
X0321468	PLUG EXISTING DECK DRAINS	EACH	112		112

* SPECIALTY ITEM

DESIGNED	M.H.
CHECKED	P.B.
DRAWN	C.L.
CHECKED	M.H./P.B.

SUMMARY OF QUANTITIES

IL ROUTE 75 OVER ROCK RIVER
FAP ROUTE 505 (IL 75), SECTION (77BRIM)
WINNEBAGO COUNTY
STATION 206+00
STRUCTURE NO. 101-0109

SCALE: _____ DATE: January, 2009

Soodan Soodan & Associates, Inc.
100 North LaSalle Street, Suite 1800
Chicago, Illinois 60602

STATE OF ILLINOIS
DEPARTMENT OF TRANSPORTATION

ROUTE NO.	SECTION	COUNTY	TOTAL SHEETS	SHEET NO.	SHEET NO. /
IL 75	77BRIM	WINNEBAGO	13	3	8 SHEETS
FED. ROAD DIST. NO. 7		ILLINOIS	FED. AID PROJECT		
CONTRACT 64E67					

GENERAL NOTES

Plan dimensions and details relative to existing plans are subject to nominal construction variations. The Contractor shall field verify existing dimensions and details affecting new construction and make necessary approved adjustments prior to construction or ordering of materials. Such variations shall not be cause for additional compensation for a change in scope of the work, however, the Contractor will be paid for the quantity actually furnished based at the unit price bid for the work.

No field welding is permitted except as specified in the contract documents.

Reinforcement bars shall conform to the requirements of ASTM A 706 Gr 60. See Special Provisions

Joint openings shall be adjusted according to Article 520.04 of the Std. Specs. when the deck is poured at an ambient temperature other than 50° F.

Reinforcement bars designated (E) shall be epoxy coated.

Existing reinforcement bars extending into removal area shall be cleaned, straightened and incorporated into the new construction. Any reinforcement bars that are damaged during concrete removal shall be replaced with an approved bar splicer or anchorage system. Cost included in Concrete Removal.

Pavement Marking shall be done according to Standard 780001, except as follows:

All words, such as ONLY, shall be 2.4 m (8 feet) high.

All non-Freeway arrows shall be the large size.

The distance between yellow no-passing lines shall be 200 mm (8"),

not 180 mm (7") as shown in the detail of Typical Lane and Edge Lines.

The Barrier Wall shall be pinned to the pavement 6 times between Sta.205+05 to Sta 205+25, Sta. 207+87 to 208+17 and Sta. 210+70 to Sta. 210-90..

SCOPE OF WORK

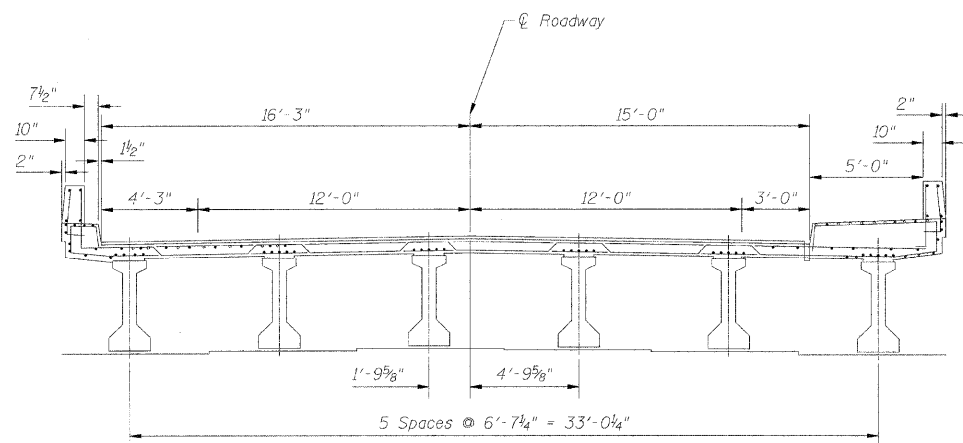
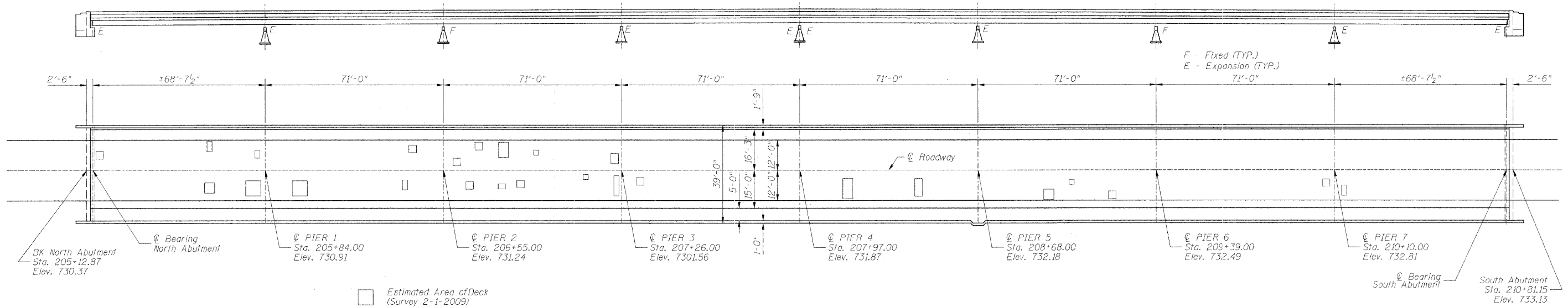
Utilizing staged construction remove & replace existing 1 1/2" Hot-Mix Asphalt Overlay and Waterproofing Membrane. Replace existing neoprene expansion joints with strip seal joints. Concrete repairs to Sidewalk and railing.

DESIGNED	M.H.
CHECKED	P.B.
DRAWN	C.L.
CHECKED	M.H./P.B.

GENERAL NOTES	
IL ROUTE 75 OVER ROCK RIVER FAP ROUTE 505 (IL 75), SECTION (77BRIM) WINNEBAGO COUNTY STATION 206+00 STRUCTURE NO. 101-0109	
SCALE:	DATE: January, 2009
Soodan	Soodan & Associates, Inc. 100 North LaSalle Street, Suite 1800 Chicago, Illinois 60602

STATE OF ILLINOIS
DEPARTMENT OF TRANSPORTATION

ROUTE NO.	SECTION	COUNTY	TOTAL SHEETS	SHEET NO.	SHEET NO. 2 8 SHEETS
IL 75	177BRM	WINNEBAGO	13	4	
FED. ROAD DIST. NO. 7 ILLINOIS FED. AID PROJECT- CONTRACT 64E67					



TOTAL BILL OF MATERIAL

ITEM	UNIT	QUANTITY
PROTECTIVE COAT	SQ YD	554
CONCRETE REMOVAL	CU. YD.	48.0
CONCRETE SUPERSTRUCTURE	CU. YD.	48.0
PREFORMED JOINT STRIP SEAL	FOOT	114
REINFORCEMENT BARS, EPOXY COATED	POUND	13,940
HOT-MIX ASPHALT SURFACE COURSE, MIX "D", NYO	TON	175
HOT-MIX ASPHALT SURFACE REMOVAL, 1 1/2"	SQ. YD.	1,975
WATERPROOFING MEMBRANE SYSTEM	SQ. YD.	1,975
BAR SPLICERS	EACH	50
DECK SLAB REPAIR (PARTIAL DEPTH)	SQ. YD.	445
STRUCTURAL REPAIR OF CONCRETE (DEPTH LESS THAN OR EQUAL TO 5 INCHES)	SQ. FT.	3,550
FLOOR DRAIN EXTENSIONS	EACH	72
PLUG EXISTING DECK DRAINS	EACH	112

DESIGNED	M.H.
CHECKED	P.B.
DRAWN	C.L.
CHECKED	M.H./P.B.



Hakim H. Taiyebi
 HAKIM H. TAIYEBI
 ILLINOIS LICENSED
 STRUCTURAL ENGINEER
 NO. 081-003266
 LICENSE EXP. 11-30-10

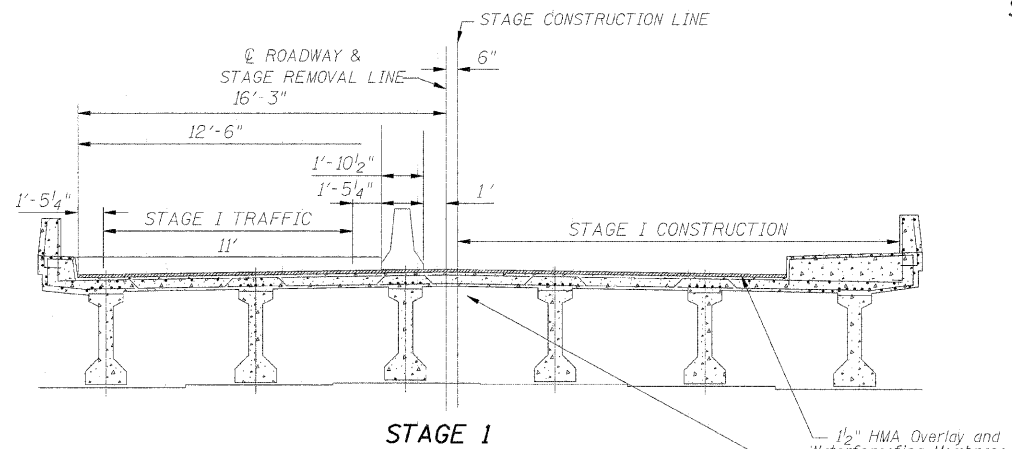
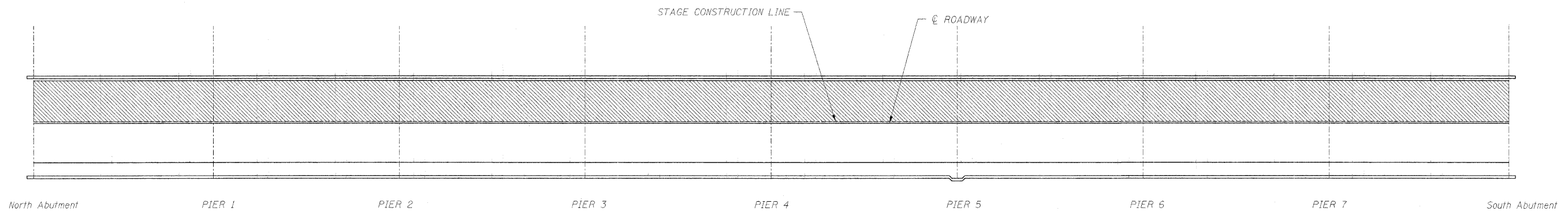
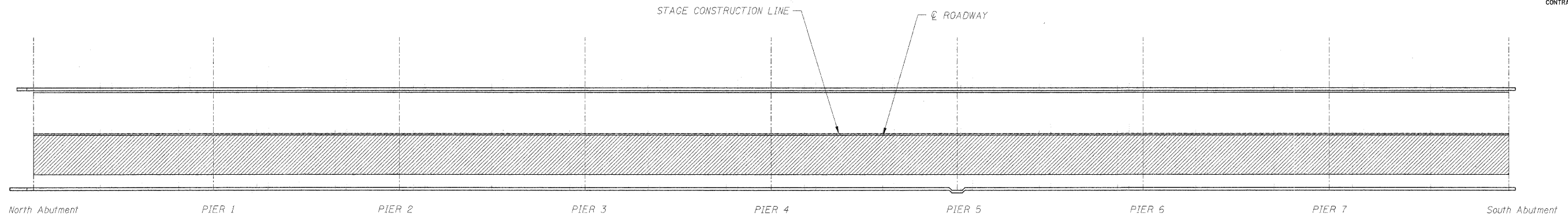
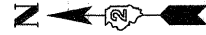
EXISTING PLAN & ELEVATION
 IL ROUTE 75 OVER ROCK RIVER
 FAP ROUTE 505 (IL 75), SECTION (177BRM)
 WINNEBAGO COUNTY
 STATION 206+00
 STRUCTURE NO. 101-0109

SCALE: Soodan & Associates, Inc.
 100 North LaSalle Street, Suite 1800
 Chicago, Illinois 60602

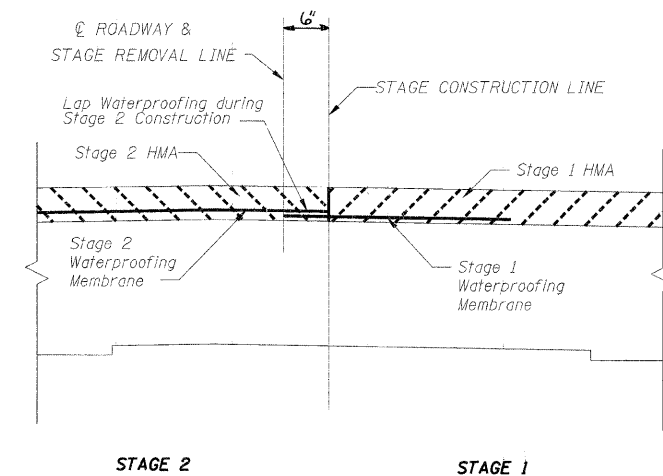
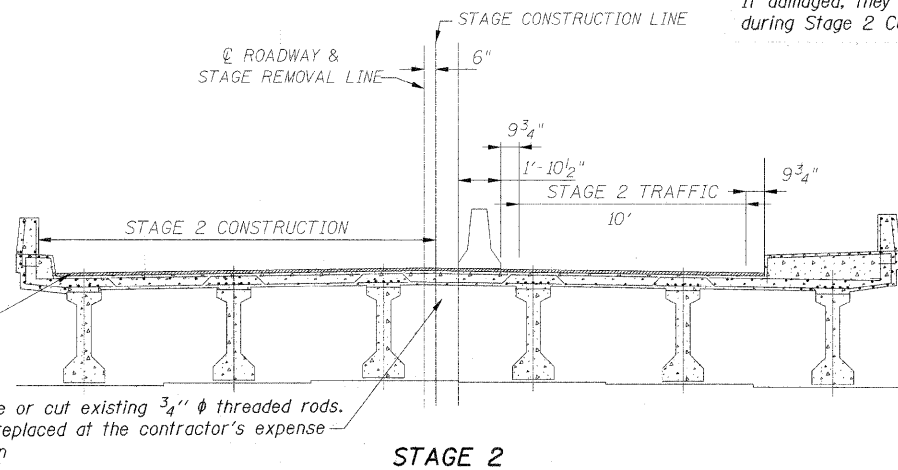
STATE OF ILLINOIS
DEPARTMENT OF TRANSPORTATION

ROUTE NO.	SECTION	COUNTY	TOTAL SHEETS	SHEET NO.	SHEET NO. 3 8 SHEETS
IL 75	(77BRM)	WINNEBAGO	13	5	
FED. ROAD DIST. NO. 7	ILLINOIS	FED. AID PROJECT-			

CONTRACT 64E67



Contractor Shall not damage or cut existing 3/4" φ threaded rods. If damaged, they shall be replaced at the contractor's expense during Stage 2 Construction



DETAIL OF WATERPROOFING MEMBRANE AT STAGE CONSTRUCTION LINE

DESIGNED	M.H.
CHECKED	P.B.
DRAWN	C.L.
CHECKED	M.H./P.B.

Contractor Shall not damage or cut existing 3/4" φ threaded rods. If damaged, they shall be replaced at the contractor's expense during Stage 2 Construction

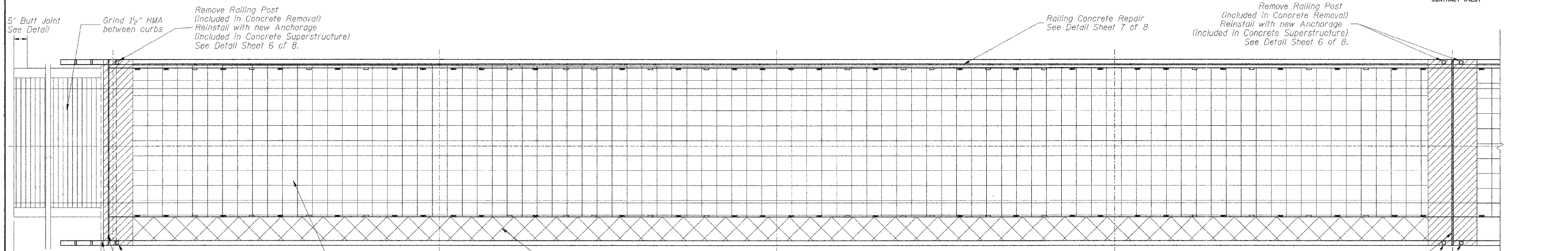
STAGE CONSTRUCTION PLAN
IL ROUTE 75 OVER ROCK RIVER
FAP ROUTE 505 (IL 75), SECTION (77BRM)
WINNEBAGO COUNTY
STATION 206+00
STRUCTURE NO. 101-0109

SCALE: DATE: January, 2009
Soodan Soodan & Associates, Inc.
100 North LaSalle Street, Suite 1800
Chicago, Illinois 60602

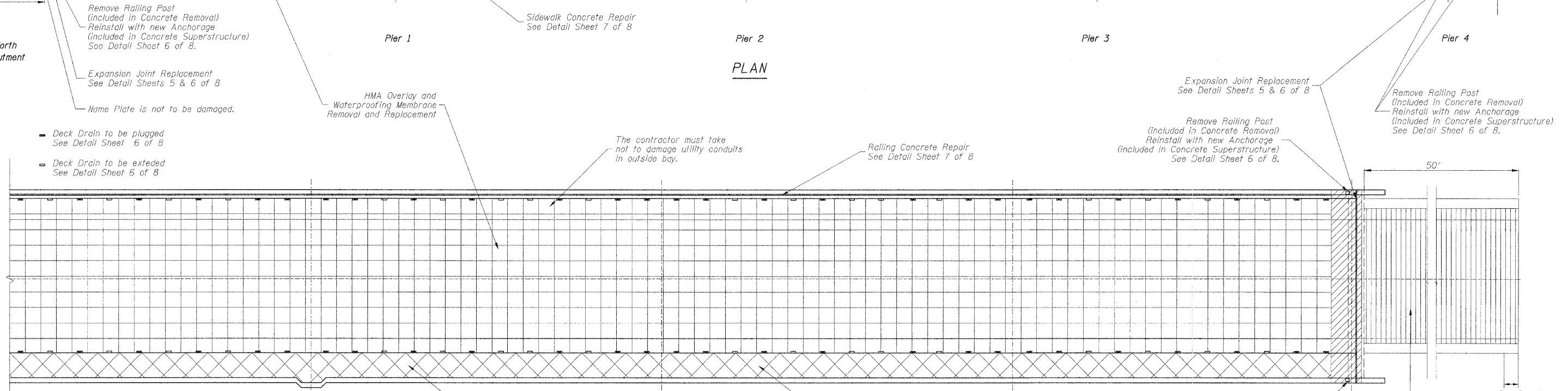
STATE OF ILLINOIS
DEPARTMENT OF TRANSPORTATION

ROUTE NO.	SECTION	COUNTY	TOTAL SHEETS	SHEET NO.
IL 75	(77BRM)	WINNEBAGO	13	6
FED. ROAD DIST. NO. 7 ILLINOIS FED. AID PROJECT-				
CONTRACT 64E67				

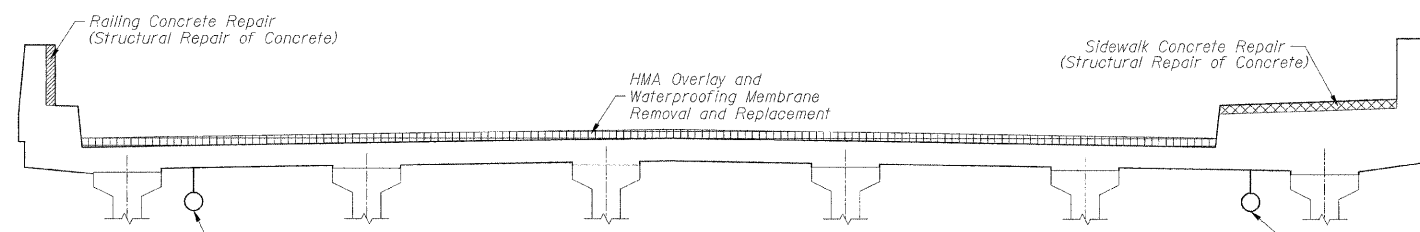
SHEET NO. 4
8 SHEETS



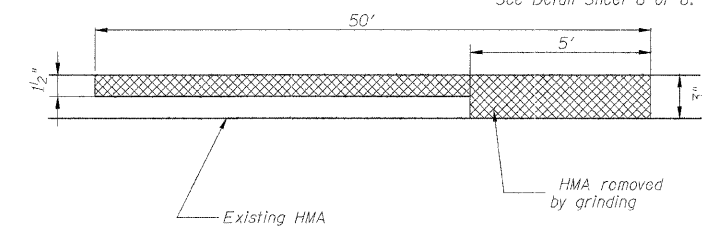
PLAN



PLAN



SECTION



BUTT JOINT DETAIL

DESIGNED	M.H.
CHECKED	P.B.
DRAWN	C.L.
CHECKED	M.H./P.B.

GENERAL REPAIR PLAN
IL ROUTE 75 OVER ROCK RIVER
FAP ROUTE 505 (IL 75), SECTION (77BRM)
WINNEBAGO COUNTY
STATION 206+00
STRUCTURE NO. 101-0109

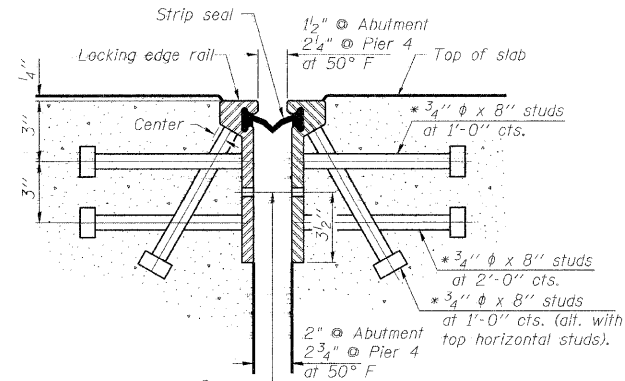
SCALE: _____ DATE: January, 2009

Soodan Soodan & Associates, Inc.
100 North LaSalle Street, Suite 1800
Chicago, Illinois 60602

STATE OF ILLINOIS
DEPARTMENT OF TRANSPORTATION

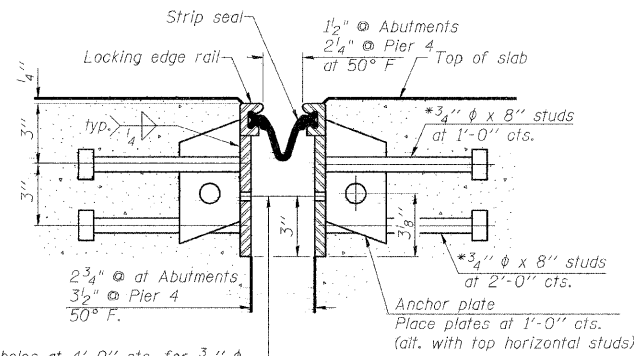
ROUTE NO.	SECTION	COUNTY	TOTAL SHEETS	SHEET NO.	SHEET NO. 5 8 SHEETS
IL 75	(77BRM)	WINNEBAGO	13	7	
FED. ROAD DIST. NO. 7 ILLINOIS FED. AID PROJECT- CONTRACT 646E7					

* Granular or solid flux filled headed studs conforming to Article 1006.32 of the Std. Specs., automatically end welded.



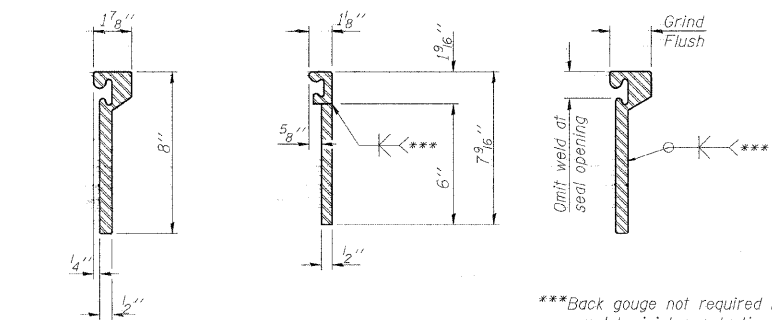
7/16" φ holes at 4'-0" cts. for 3/8" φ bolts. All bolts shall be burned, sawed, or chipped off flush with the plates after forms are removed, typ.

SECTION THRU
ROLLED RAIL JOINT



7/16" φ holes at 4'-0" cts. for 3/8" φ bolts. All bolts shall be burned, sawed, or chipped off flush with the plates after forms are removed, typ.

SECTION THRU
WELDED RAIL JOINT



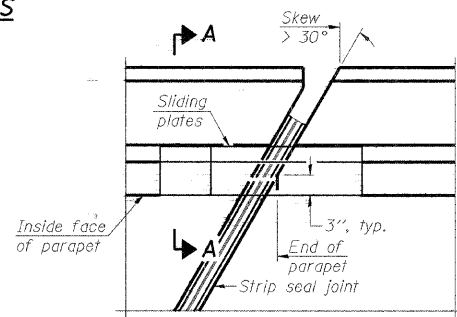
ROLLED
EXTRUDED RAIL WELDED RAIL

***Back gouge not required if complete joint penetration is verified by mock-up.

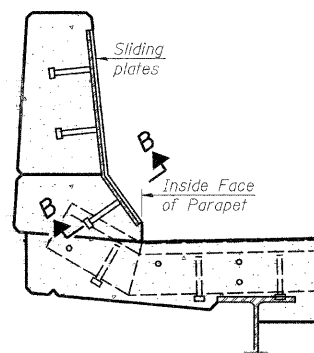
LOCKING EDGE
RAIL SPLICE

The inside of the locking edge rail groove shall be free of weld residue.

LOCKING EDGE RAILS

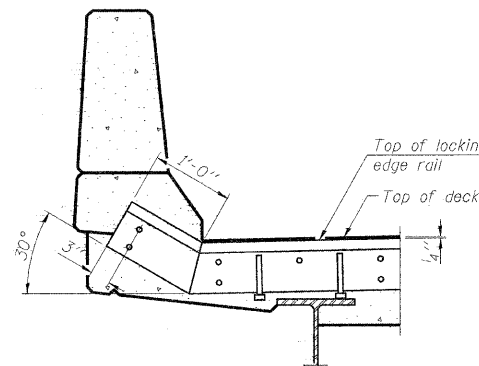


PLAN

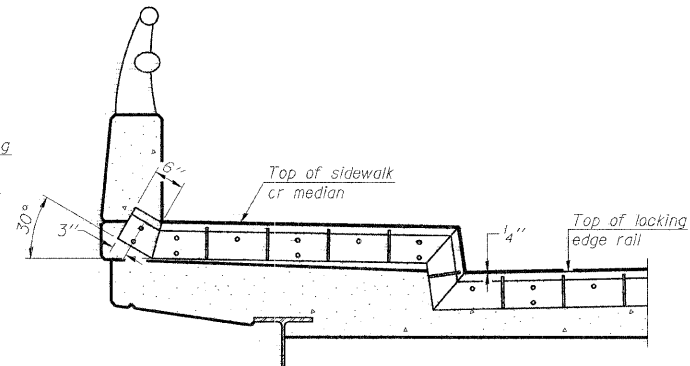


SECTION A-A

POINT BLOCK DETAILS
(for skews > 30°)



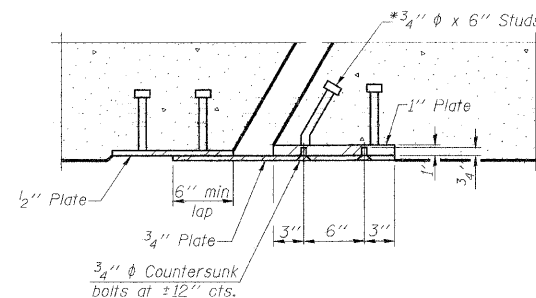
AT PARAPET



AT SIDEWALK OR MEDIAN

Shorter plates with a single row of studs at 12" cts. may be necessary on medians which are shallower than 9". See manufacturer's recommendation.

TYPICAL END TREATMENTS



SECTION B-B

BILL OF MATERIAL

Item	Unit	Total
Preformed Joint Strip Seal	Foot	114

PREFORMED JOINT STRIP SEAL

IL ROUTE 75 OVER ROCK RIVER
FAP ROUTE 505 (IL 75), SECTION (77BRM)
WINNEBAGO COUNTY
STATION 206+00
STRUCTURE NO. 101-0109

SCALE: DATE: January, 2009
Soodan & Associates, Inc.
100 North LaSalle Street, Suite 1800
Chicago, Illinois 60602

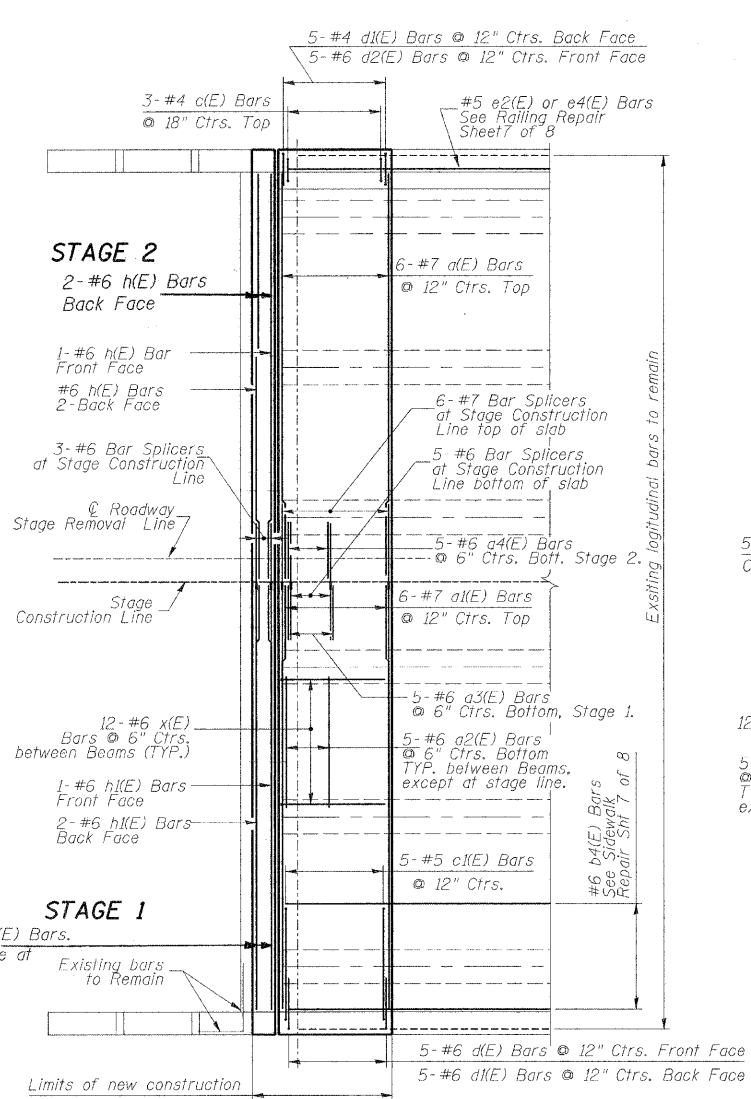
DESIGNED	M.H.
CHECKED	P.B.
DRAWN	C.L.
CHECKED	M.H./P.B.

EJ-SSJ

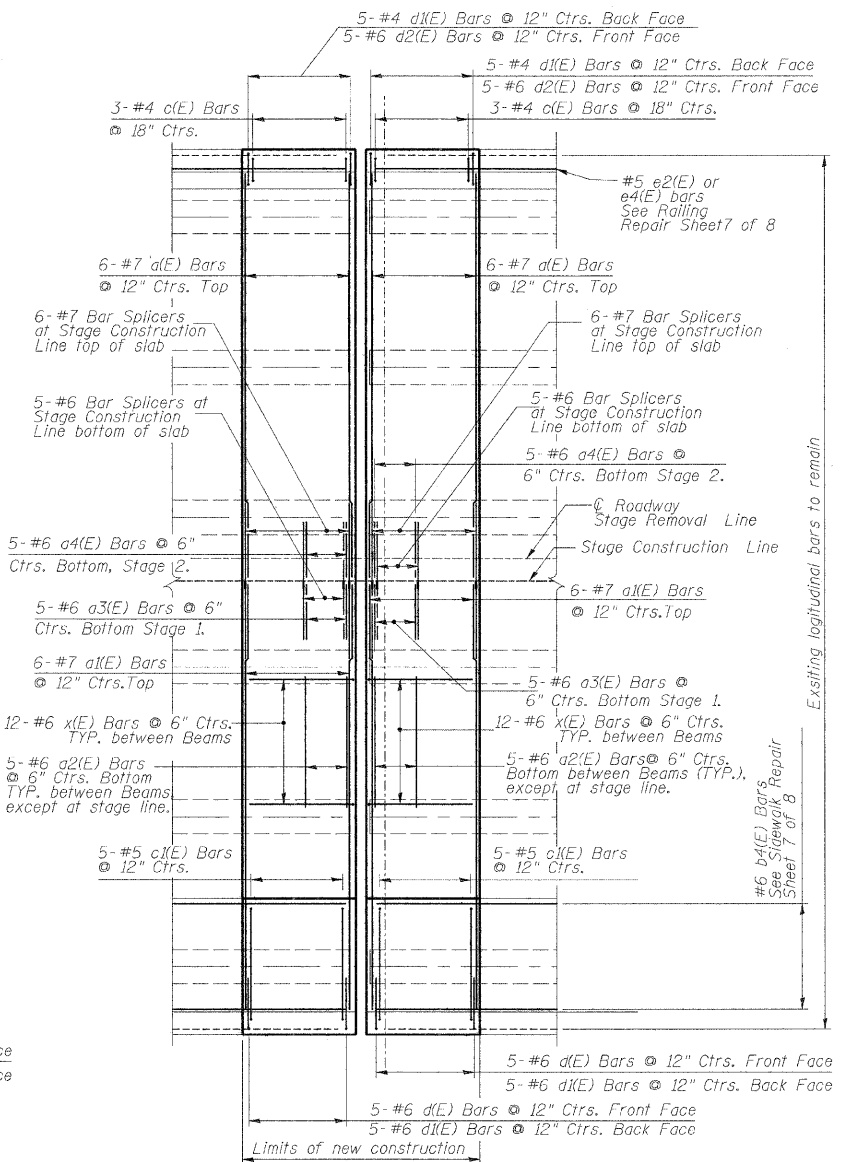
10-1-08

**STATE OF ILLINOIS
DEPARTMENT OF TRANSPORTATION**

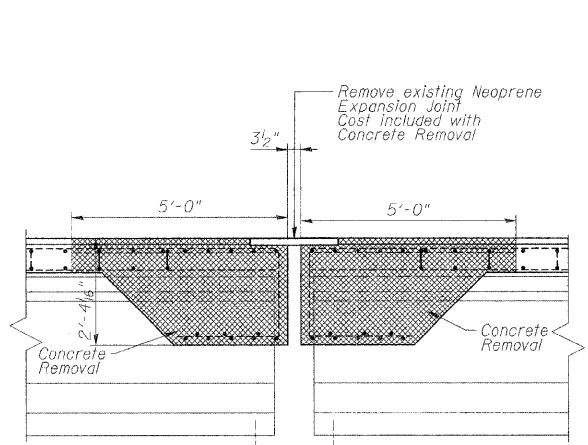
ROUTE NO.	SECTION	COUNTY	TOTAL SHEETS	SHEET NO.	SHEET NO. 6 8 SHEETS
IL 75	177BRM	WINNEBAGO	13	8	
FED. ROAD DIST. NO. 7 ILLINOIS FED. AID PROJECT-					
CONTRACT 64E67					



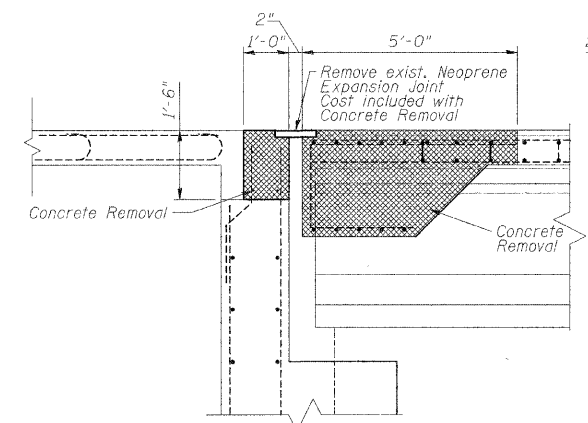
Plan at North Abutment
(South abutment opposite hand)



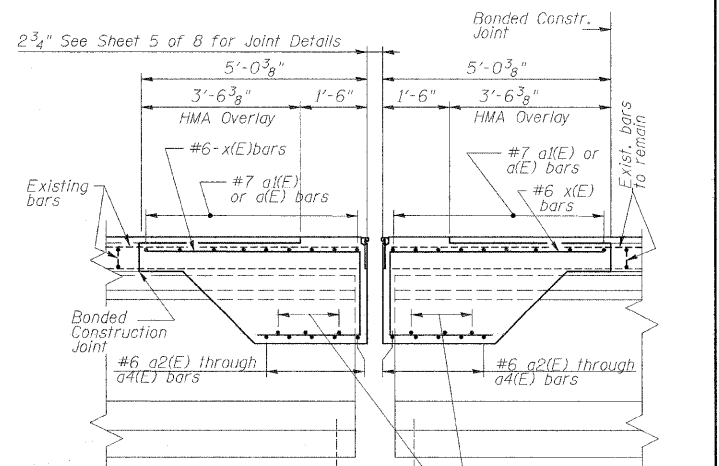
Plan at Pier 4



At PIER 4

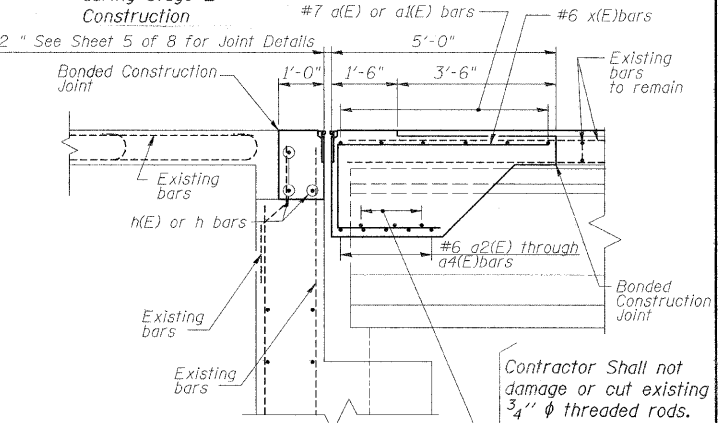


**At ABUTMENTS
CONCRETE REMOVAL**



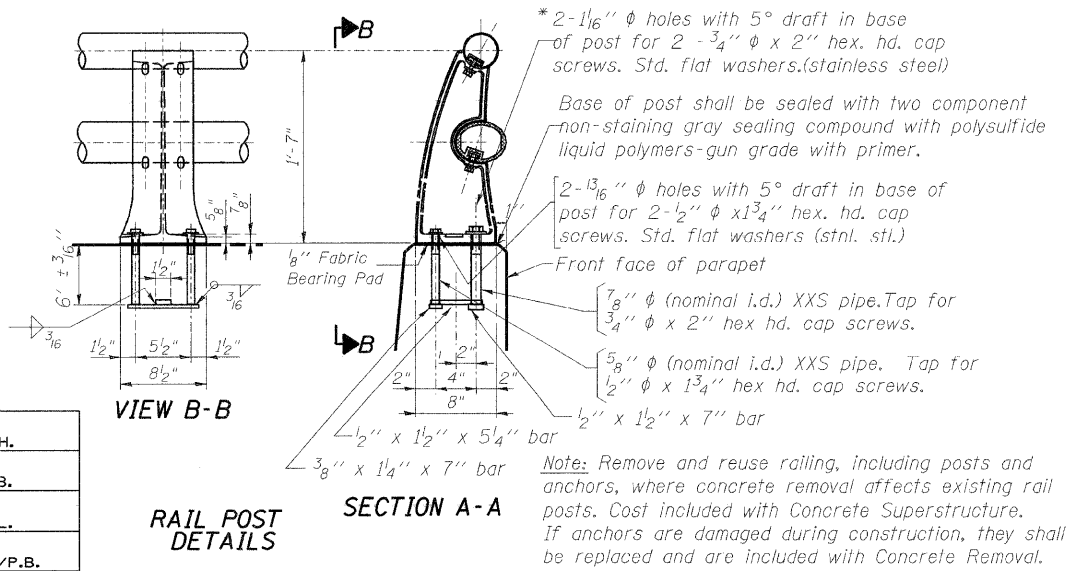
At PIER 4

Contractor Shall not damage or cut existing 3/4" ϕ threaded rods. If damaged, they shall be replaced at the contractor's expense during Stage 2 Construction

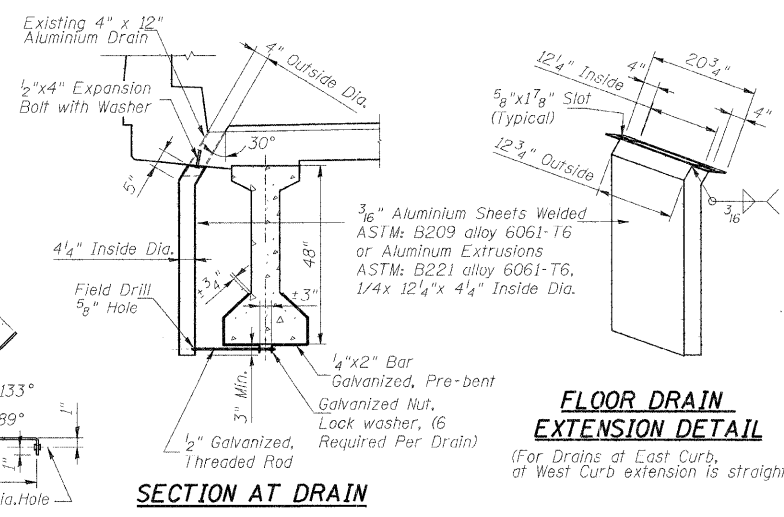
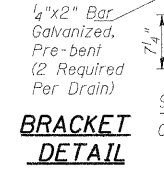
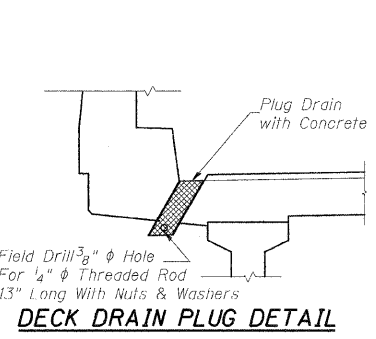


**At ABUTMENTS
CONCRETE REPLACEMENT**

Contractor Shall not damage or cut existing 3/4" ϕ threaded rods. If damaged, they shall be replaced at the contractor's expense during Stage 2 Construction



**RAIL POST
DETAILS**



SECTION AT DRAIN

Note: The Contractor shall use extreme care during concrete removal so as not to damage the PPC I-Beam. Any damage done to the PPC I-Beam shall be repaired to the satisfaction of the Engineer at the Contractor's expense.

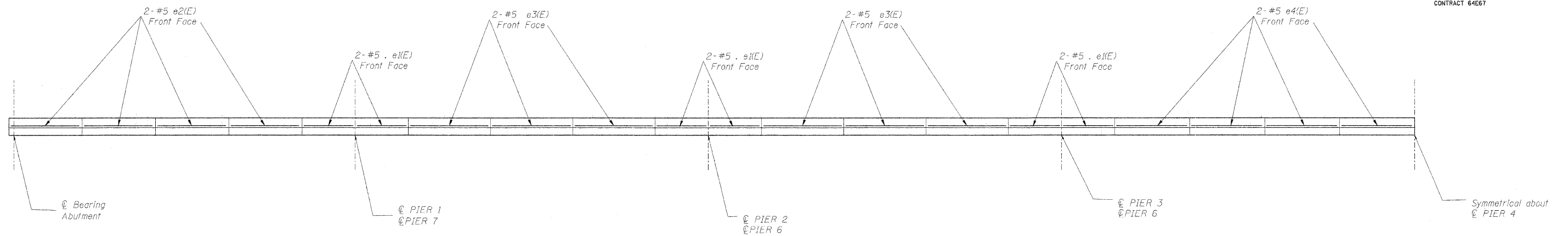
JOINT DETAILS
 IL ROUTE 75 OVER ROCK RIVER
 FAP ROUTE 505 (IL 75), SECTION (177BRM)
 WINNEBAGO COUNTY
 STATION 206+00
 STRUCTURE NO. 101-0109

DESIGNED	M.H.
CHECKED	P.B.
DRAWN	C.L.
CHECKED	M.H./P.B.

STATE OF ILLINOIS
DEPARTMENT OF TRANSPORTATION

ROUTE NO.	SECTION	COUNTY	TOTAL SHEETS	SHEET NO.	SHEET NO. 7 8 SHEETS
IL 75	177BRM	WINNEBAGO	13	9	
FED. ROAD DIST. NO. 7		ILLINOIS	FED. AID PROJECT -		

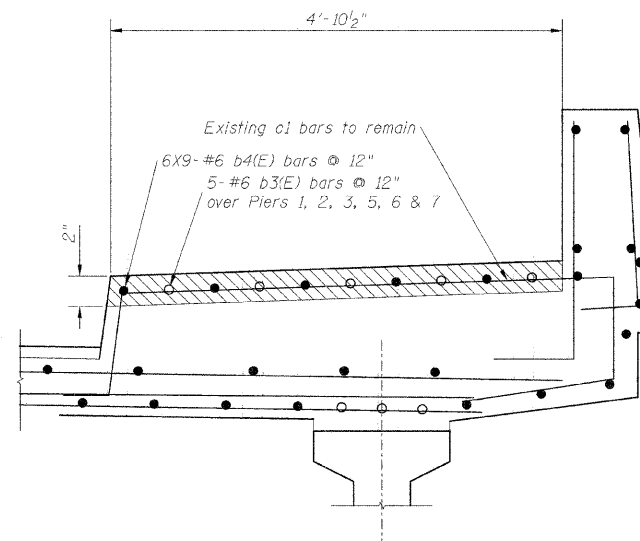
CONTRACT 64E67



BILL OF MATERIAL

Bar	No.	Size	Length	Shape
e1(E)	8	5	10'-3"	—
e2(E)	12	5	14'-6"	—
e3(E)	12	5	16'-5"	—
e4(E)	8	5	14'-10"	—
b3(E)	30	6	28'-0"	—
b4(E)	108	6	32'-6"	—
x(E)	240	6	8'-7"	┌
a(E)	24	7	18'-0"	—
a1(E)	24	7	18'-10"	—
a2(E)	80	6	5'-9"	—
a3(E)	20	6	3'-6"	—
a4(E)	20	5	2'-4"	—
c(E)	12	4	5'-8"	┐
d(E)	20	6	3'-6"	┌
d1(E)	20	4	2'-8"	┌
c1(E)	20	5	9'-10"	┌
d1(E)	20	4	2'-8"	┌
d2(E)	20	6	5'-11"	┌
h(E)	6	6	18'-0"	—
h1(E)	6	6	18'-10"	—
h2(E)	8	5	4'-9"	—
Reinforcement Bars, Epoxy Coated			POUND	13,940

RAILING PLAN

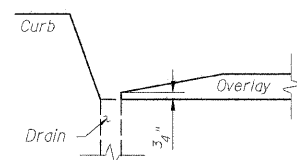
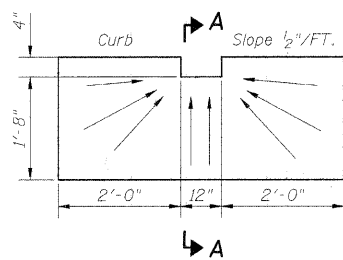
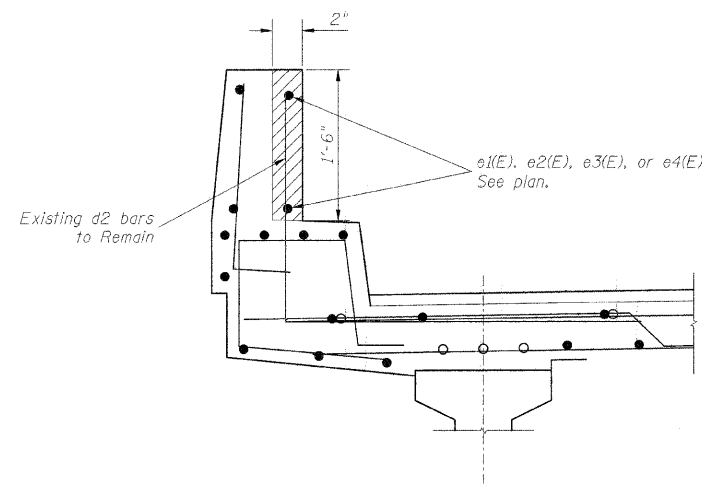


SIDEWALK REPAIR DETAIL

Concrete Removal
Structural Repair of Concrete
(Depth <= 5")

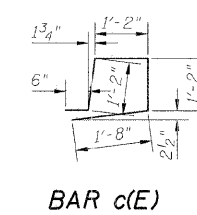
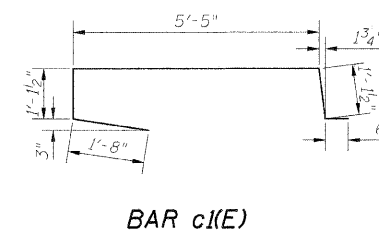
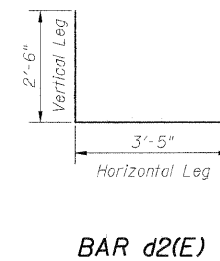
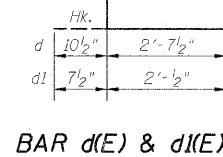
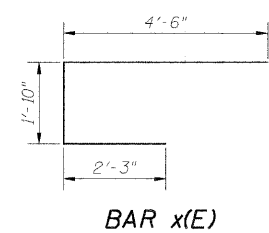
RAILING REPAIR DETAIL

Concrete Removal
Structural Repair of Concrete
(Depth <= 5")



SECTION A-A

OVERLAY TREATMENT AT DECK DRAIN LOCATION



DESIGNED	M.H.
CHECKED	P.B.
DRAWN	C.L.
CHECKED	M.H./P.B.

RAILING AND SIDEWALK REPAIRS
IL ROUTE 75 OVER ROCK RIVER
FAP ROUTE 505 (IL 75), SECTION 177BRM
WINNEBAGO COUNTY
STATION 206+00
STRUCTURE NO. 101-0109

SCALE: DATE: January, 2009
Soodan
Soodan & Associates, Inc.
100 North LaSalle Street, Suite 1800
Chicago, Illinois 60602

STATE OF ILLINOIS
DEPARTMENT OF TRANSPORTATION

ROUTE NO.	SECTION	COUNTY	TOTAL SHEETS	SHEET NO.
IL 75	(77BR)M	WINNEBAGO	13	10
FED. ROAD DIST. NO. 7		ILLINOIS	FED. AID PROJECT-	

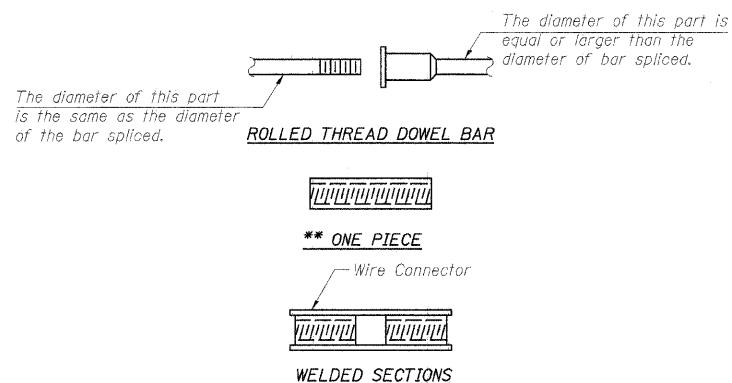
SHEET NO. 8
8 SHEETS

CONTRACT 64E67

NOTES

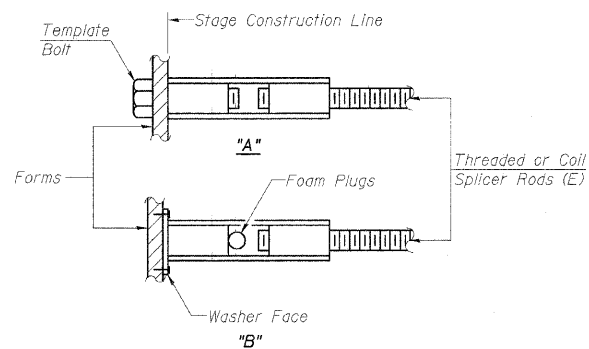
Bar splicer assemblies shall be of an approved type and shall develop in tension at least 125 percent of the yield strength of the lapped reinforcement bars.
Splicer rods shall be of minimum 60 ksi yield strength, threaded or coiled full length.
All reinforcement bars shall be lapped and tied to the splicer rods or dowel bars.
Bar splicer assemblies shall be epoxy coated according to the requirements for reinforcement bars.
Other systems of similar design may be submitted to the Engineer for approval. Approval shall be based on certified test results from an approved testing laboratory that the proposed bar splicer assembly satisfies the following requirements:

- ① Minimum Capacity (Tension in kips) = $1.25 \times f_y \times A_s$
 - ② Minimum *Pull-out Strength (Tension in kips) = $0.66 \times f_y \times A_s$
- Where f_y = Yield strength of lapped reinforcement bars in ksi.
 A_s = Tensile stress area of lapped reinforcement bars.
* = 28 day concrete



BAR SPLICER ASSEMBLY ALTERNATIVES

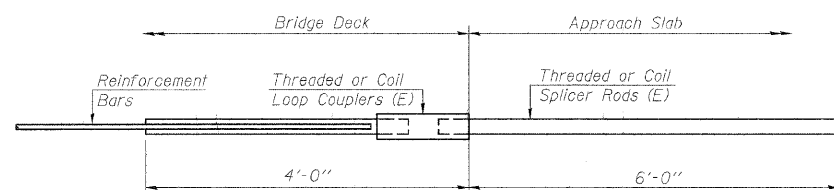
**Heavy Hex Nuts conforming to ASTM A 563, Grade C, D or DH may be used.



INSTALLATION AND SETTING METHODS

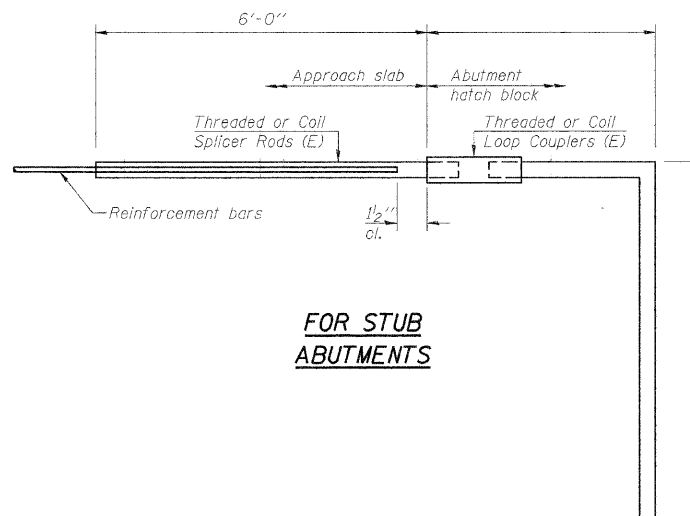
"A": Set bar splicer assembly by means of a template bolt.
"B": Set bar splicer assembly by nailing to wood forms or cementing to steel forms.
(E) : Indicates epoxy coating.

Bar Size to be Spliced	Splicer Rod or Dowel Bar Length	Strength Requirements	
		Min. Capacity kips - tension	Min. Pull-Out Strength kips - tension
#4	1'-8"	14.7	7.9
#5	2'-2"	23.0	12.3
#6	2'-7"	33.1	17.4
#7	3'-5"	45.1	23.8
#8	4'-6"	58.9	31.3
#9	5'-9"	75.0	39.6
#10	7'-3"	95.0	50.3
#11	9'-0"	117.4	61.8



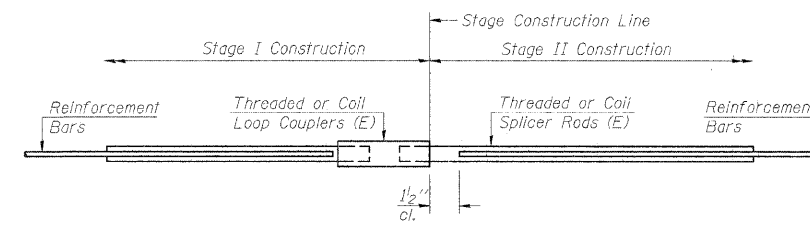
FOR INTEGRAL OR SEMI-INTEGRAL ABUTMENTS

Bar Splicer for #5 bar
Min. Capacity = 23.0 kips - tension
Min. Pull-out Strength = 12.3 kips - tension
No. Required =



FOR STUB ABUTMENTS

Bar Splicer for #5 bar
Min. Capacity = 23.0 kips - tension
Min. Pull-out Strength = 12.3 kips - tension
No. Required =



STANDARD

Bar Size	No. Assemblies Required	Location
#7	24	Deck
#6	6	Abutment
#6	20	Deck

DESIGNED	M.H.
CHECKED	P.B.
DRAWN	C.L.
CHECKED	M.H./P.B.

BSD-1

10-1-08

BAR SPLICER ASSEMBLY DETAILS

IL ROUTE 75 OVER ROCK RIVER
FAP ROUTE 505 (IL 75), SECTION (77BR)M
WINNEBAGO COUNTY
STATION 206+00
STRUCTURE NO. 101-0109

SCALE: N.T.S.
Soodan

DATE: January, 2009
Soodan & Associates, Inc.
100 North LaSalle Street, Suite 1800
Chicago, Illinois 60602

STATE OF ILLINOIS
DEPARTMENT OF TRANSPORTATION

ROUTE NO.	SECTION	COUNTY	TOTAL SHEETS	SHEET NO.
IL 75	(77BR)M	WINNEBAGO	13	11
FED. ROAD DIST. NO. 7		ILLINOIS	FED. AID PROJECT-	
CONTRACT 64E67				



Existing Speed Limit is 30 MPH
Throughout the job site.

DESIGNED	M.H.
CHECKED	P.B.
DRAWN	C.L.
CHECKED	M.H./P.B.

- | | |
|--------------------|--|
| Work area | Drum with steady burning light |
| Sign | Temporary concrete barrier |
| Type III barricade | Temporary rumble strip (when specified) |
| Traffic signal | Double vertical panel (see detail) |
| Detector loops | Crystal, bidirectional barrier wall/guardrail marker |
| Impact attenuator | |

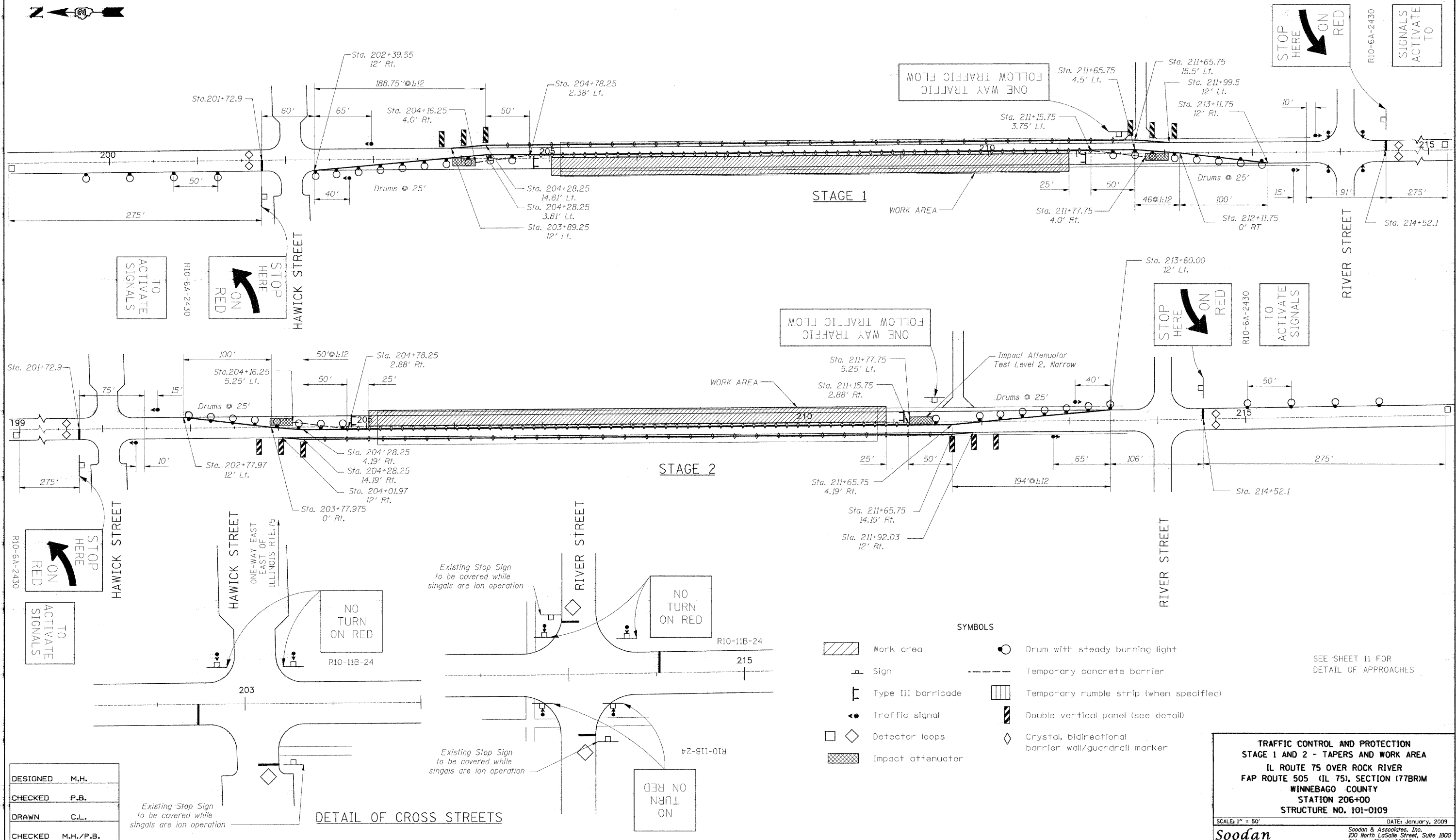
TRAFFIC CONTROL AND PROTECTION
STAGE 1 AND 2 - APPROACHES
IL ROUTE 75 OVER ROCK RIVER
FAP ROUTE 505 (IL 75), SECTION (77BR)M
WINNEBAGO COUNTY
STATION 206+00
STRUCTURE NO. 101-0109

SCALE: 1" = 150'
DATE: January, 2009
Soodan & Associates, Inc.
100 North LaSalle Street, Suite 1800
Chicago, Illinois 60602

Soodan

STATE OF ILLINOIS
DEPARTMENT OF TRANSPORTATION

ROUTE NO.	SECTION	COUNTY	TOTAL SHEETS	SHEET NO.
IL 75	(77BRM)	WINNEBAGO	13	12
FED. ROAD DIST. NO. 7		ILLINOIS	FED. AID PROJECT-	
CONTRACT 64667				



TO
ACTIVATE
SIGNALS
R10-6A-2430
STOP
HERE
ON
RED

STOP
HERE
ON
RED
R10-6A-2430
SIGNALS
ACTIVATE
TO

ONE WAY TRAFFIC
FOLLOW TRAFFIC FLOW

STOP
HERE
ON
RED
R10-6A-2430
TO
ACTIVATE
SIGNALS

STOP
HERE
ON
RED
R10-6A-2430
TO
ACTIVATE
SIGNALS

NO
TURN
ON RED
R10-11B-24

NO
TURN
ON RED
R10-11B-24

NO
TURN
ON RED
R10-11B-24

SYMBOLS

- Work area
- Sign
- Type III barricade
- Traffic signal
- Detector loops
- Impact attenuator
- Drum with steady burning light
- Temporary concrete barrier
- Temporary rumble strip (when specified)
- Double vertical panel (see detail)
- Crystal, bidirectional barrier wall/guardrail marker

SEE SHEET 11 FOR
DETAIL OF APPROACHES

DESIGNED	M.H.
CHECKED	P.B.
DRAWN	C.L.
CHECKED	M.H./P.B.

Existing Stop Sign
to be covered while
signals are in operation

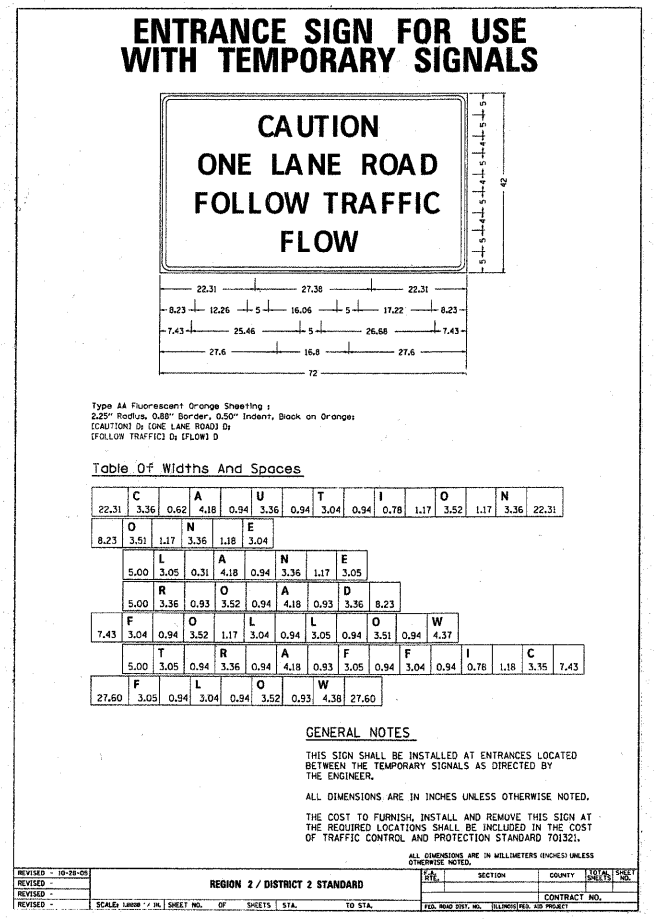
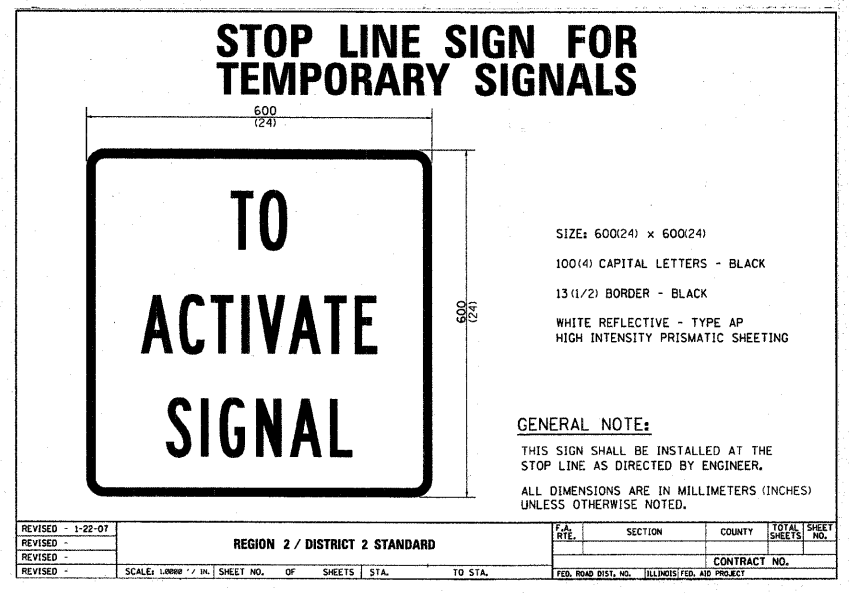
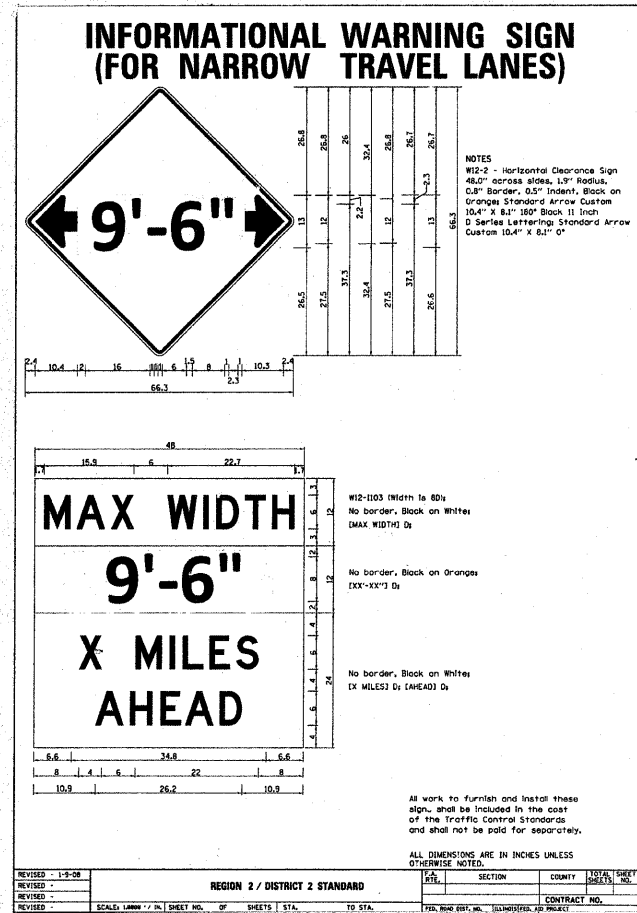
DETAIL OF CROSS STREETS

Existing Stop Sign
to be covered while
signals are in operation

Existing Stop Sign
to be covered while
signals are in operation

TRAFFIC CONTROL AND PROTECTION
STAGE 1 AND 2 - TAPERS AND WORK AREA
IL ROUTE 75 OVER ROCK RIVER
FAP ROUTE 505 (IL 75), SECTION (77BRM)
WINNEBAGO COUNTY
STATION 206+00
STRUCTURE NO. 101-0109

SCALE: 1" = 50' DATE: January, 2009
Soodan & Associates, Inc.
100 North LaSalle Street, Suite 1800
Chicago, Illinois 60602



FILE NAME = C:\pwork\PWIDOT\CONDERMANEE\dms34267	USER NAME = condermanee	DESIGNED -	REVISOR -	STATE OF ILLINOIS DEPARTMENT OF TRANSPORTATION	F.A. SITE	SECTION	COUNTY	TOTAL SHEETS	SHEET NO.	
	d08403de-tr-shfts.dgn	DRAWN -	REVISOR -					13	13	
	PLOT SCALE = 50.0000 ' / IN.	CHECKED -	REVISOR -		CONTRACT NO.					
	PLOT DATE = Fri Feb 13 11:39:54 2009	DATE -	REVISOR -		ILLINOIS FED. AID PROJECT					
					SCALE:	SHEET NO. OF SHEETS	STA. TO STA.			