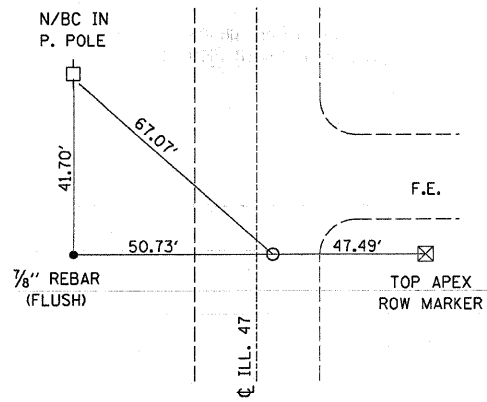
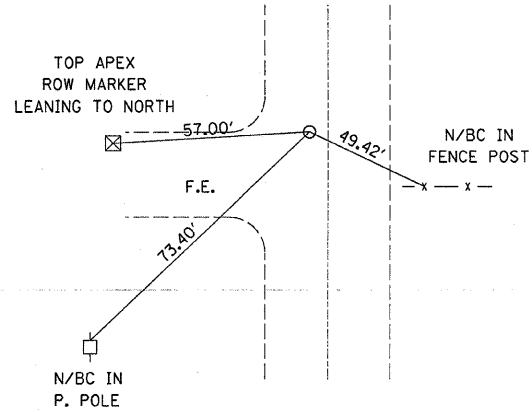


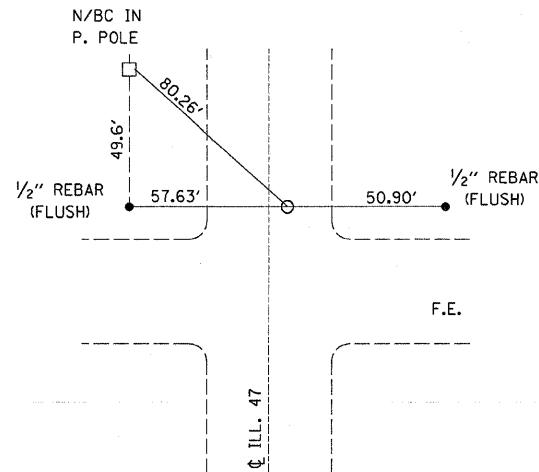
F.A.P. RTE.	SECTION	COUNTY	TOTAL SHEETS	SHEET NO.
326	(118,119) RS-4	GRUNDY	28	22
STA.		TO STA.		
FED. ROAD DIST. NO.		ILLINOIS FED. AID PROJECT		



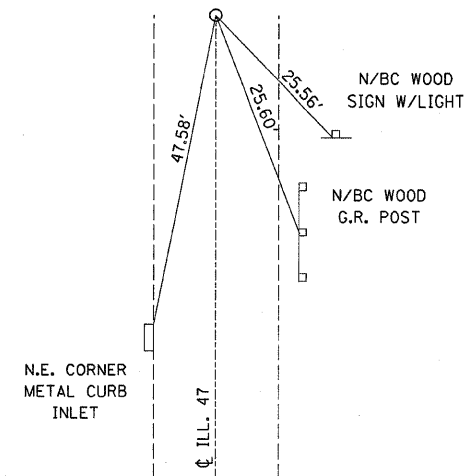
FOUND BRASS DISK  
2.07' E OF  $\phi$  ILL. 47  
STA. 517+55.98  
E 1/4 COR. SEC. 28 T32N R7E



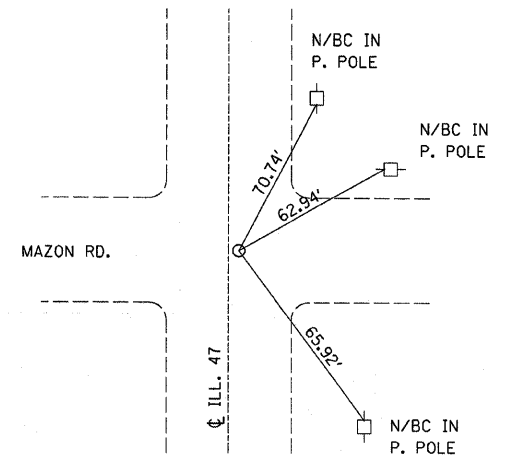
FOUND BRASS DISK  
3.21' W OF  $\phi$  ILL. 47  
STA. 544+06.91  
NE COR. SEC. 28 T32N R7E



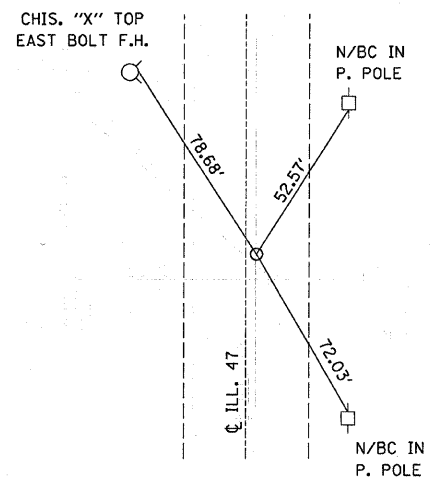
FOUND BRASS DISK  
2.45' E OF  $\phi$  ILL. 47  
STA. 570+57.79  
E 1/4 COR. SEC. 21 T32N R7E



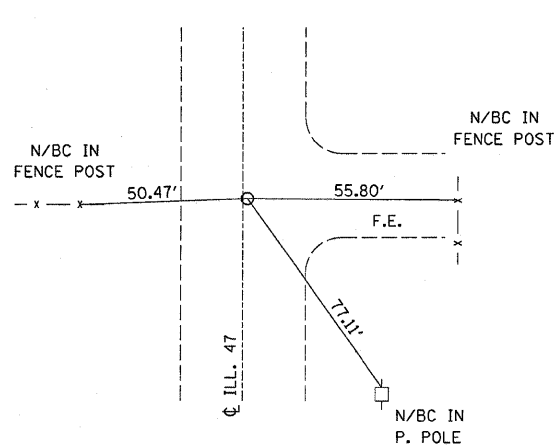
FOUND BRASS DISK ON  $\phi$  ILL. 47  
STA. 592+15.89  $\phi$  P.C.



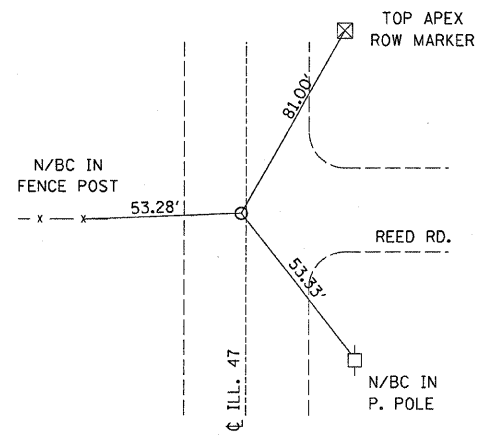
FOUND BRASS DISK  
1.42' E OF  $\phi$  ILL. 47  
STA. 597+07.05  
NE COR. SEC. 21 T32N R7E



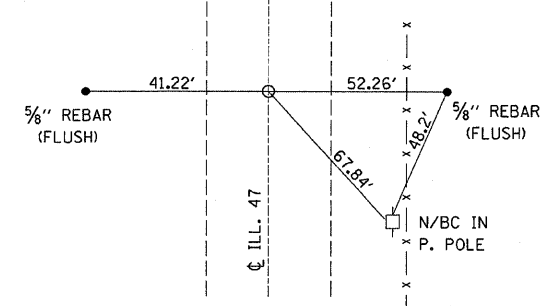
FOUND BRASS DISK ON  $\phi$  ILL. 47  
STA. 602+15.89  $\phi$  P.T.



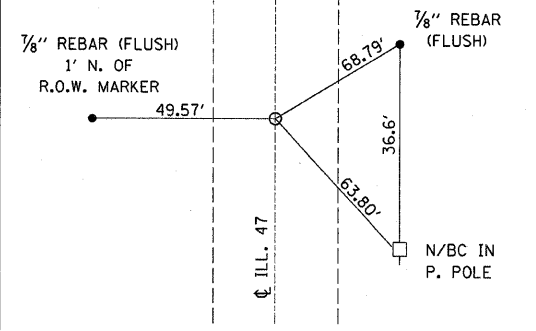
FOUND BRASS DISK  
0.66' E OF  $\phi$  ILL. 47  
STA. 623+59.24  
E 1/4 COR. SEC. 16 T32N R7E



FOUND BRASS DISK  
0.10' W OF  $\phi$  ILL. 47  
STA. 650+11.57  
NE COR. SEC. 16 T32N R7E



FOUND BRASS DISK ON  $\phi$  ILL. 47  
STA. 676+56.64  
E 1/4 COR. SEC. 9 T32N R7E



FOUND BRASS DISK ON  $\phi$  ILL. 47  
STA. 700+14.83  $\phi$  P.C.

DATE-TIME\* C:\pw\work\pw\tdof\braboy\pc\0116918\def\11s.dgn