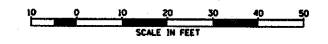
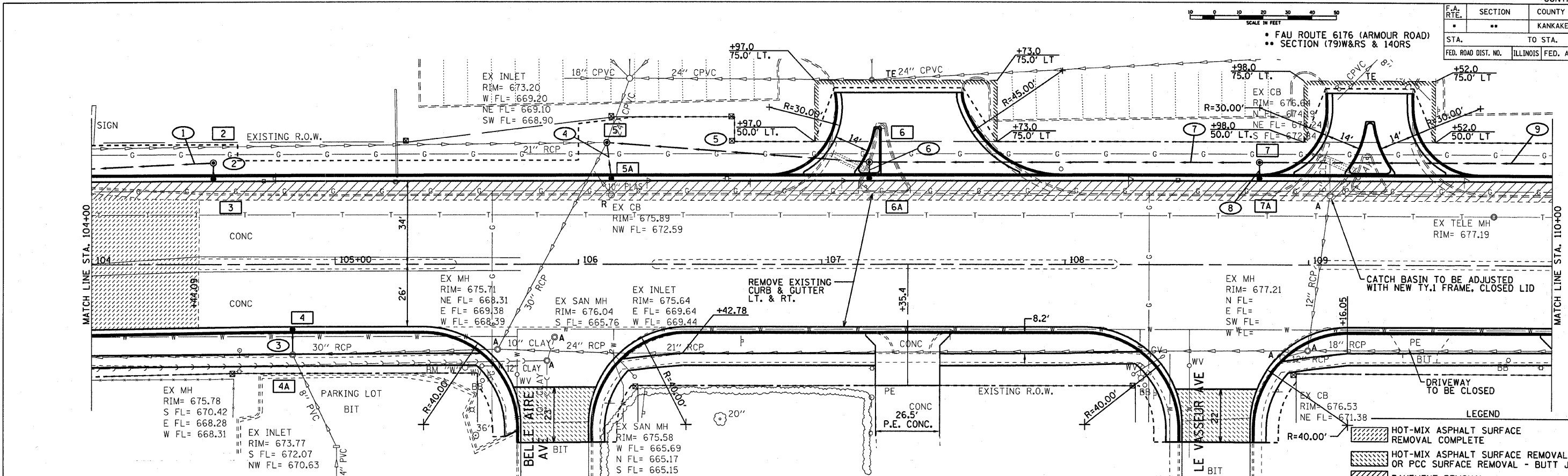


F.A. RTE.	SECTION	COUNTY	TOTAL SHEETS	SHEET NO.
**	**	KANKAKEE	109	18
STA.		TO STA.		
FED. ROAD DIST. NO.		ILLINOIS FED. AID PROJECT		



FAU ROUTE 6176 (ARMOUR ROAD)
SECTION (79)W&RS & 14ORS

DATE	BY	DATE	BY
11/20/03	CHAMIN	11/20/03	CHAMIN
12/03/03	CHAMIN	12/03/03	CHAMIN
01/03/04	CHAMIN	01/03/04	CHAMIN



BENCHMARK "W"
CHISELED "X" ON NORTH BOLT ON FIRE HYDRANT AT S.W.
CORNER OF ARMOUR ROAD AND BELLE AIRE AVENUE
ELEV. 677.65

LEGEND

- HOT-MIX ASPHALT SURFACE REMOVAL COMPLETE
- HOT-MIX ASPHALT SURFACE REMOVAL - BUTT JOINT OR PCC SURFACE REMOVAL - BUTT JOINT
- PAVEMENT REMOVAL
- PAVEMENT WIDENING

DATE	BY	DATE	BY
11/20/03	CHAMIN	11/20/03	CHAMIN
12/03/03	CHAMIN	12/03/03	CHAMIN
01/03/04	CHAMIN	01/03/04	CHAMIN

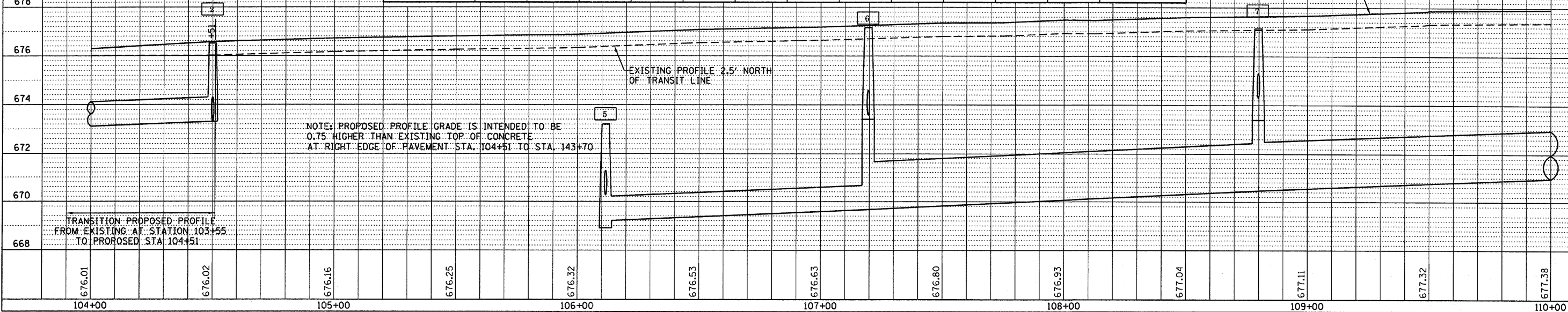
NOTES:
OFFSETS SHOWN ARE TO EDGE OF PAVEMENT OR TO FLARED END SECTIONS, WHERE STRUCTURE IS NOT IN CURB AND GUTTER OFFSET IS TO CENTER OF STRUCTURE. RIM ELEVATIONS ARE AT FLOWLINE OF GUTTER OR TOP OF GRATE/LID.
• FLAT SLAB TOP REQUIRED
I-A - INLET TYPE A
I-B - INLET TYPE B
PRCFES - PRECAST REINFORCED CONCRETE FLARED END SECTIONS (AIRG) - CLASS A RUBBER GASKET (SEE SPECIAL PROVISIONS)
WM - WATERMAIN (SEE SPECIAL PROVISIONS)
T.B.- TRENCH BACKFILL (CU YD)

STRUCTURE NO.	2	3	4	4A	5	5A	6	6A	7	7A	-	-	STRUCTURE NO.
STA	104+50.0	104+50.0	104+82.6	104+82.6	106+11.6	106+13.5	107+19.5	107+19.5	108+79.8	108+79.8	--	--	STA
OFFSET	41.58 LT	34.0 LT	26.0 RT	37.4 RT	49.6 LT	34.0 LT	41.6 LT	34.0 LT	41.6 LT	34.0 LT	--	--	OFFSET
STRUCTURE TYPE	MH TA 4	CB-C	CB-C	MH(EXIST)	MH TA 8	CB-C	MH TA 5	CB-C	MH TA 5	CB-C	--	--	STRUCTURE TYPE
F&G TYPE	1 CL	3	3	--	1 OL	3	1 CL	4	1 CL	3	--	--	F&G TYPE
RIM ELEVATION	676.51	675.65	676.00	675.78	673.20	675.98	677.16	676.36	677.14	676.54	--	--	RIM ELEVATION
EAST INVERT	--	--	--	668.28	668.90	--	669.60	--	670.48	--	--	--	EAST INVERT
WEST INVERT	673.31	--	--	668.31	669.20	--	669.60	--	670.48	--	--	--	WEST INVERT
NORTH INVERT	--	673.34	--	672.96	669.10	670.33	--	673.61	--	674.33	--	--	NORTH INVERT
SOUTH INVERT	673.31	--	673.00	670.42	--	--	673.58	--	674.30	--	--	--	SOUTH INVERT
PIPE NUMBER	1	2	3	4	5	6	7	8	9	-	-	-	PIPE NUMBER
SIZE	12"	12"	12"	12"	12"	12"	24"	12"	24"	--	--	--	SIZE
LENGTH	101'	7'	10'	15'	108'	7'	160'	7'	140'	--	--	--	LENGTH
CLASS	A (RG)	A	A (RG)	A	A (RG)	A	A (RG)	A	A (RG)	--	--	--	CLASS
TYPE	1	1	1	1	2	1	2	1	2	--	--	--	TYPE
% SLOPE	0.40%	0.40%	0.40%	0.40%	0.65%	0.40%	0.55%	0.40%	0.40%	--	--	--	% SLOPE
T.B.	--	--	--	--	23.2	1.1	75.6	--	54.0	--	--	--	T.B.

... PIPE SIZE DECREASES FROM 24" TO 12" AT STRUCTURE 6 FOR STORM WATER DETENTION PURPOSES.

... 668.90(E) & 670.27(P)

PROPOSED PROFILE GRADE AT TRANSIT LINE



NOTE: PROPOSED PROFILE GRADE IS INTENDED TO BE 0.75' HIGHER THAN EXISTING TOP OF CONCRETE AT RIGHT EDGE OF PAVEMENT STA. 104+51 TO STA. 143+70

TRANSITION PROPOSED PROFILE FROM EXISTING AT STATION 103+55 TO PROPOSED STA. 104+51