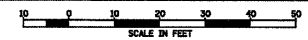


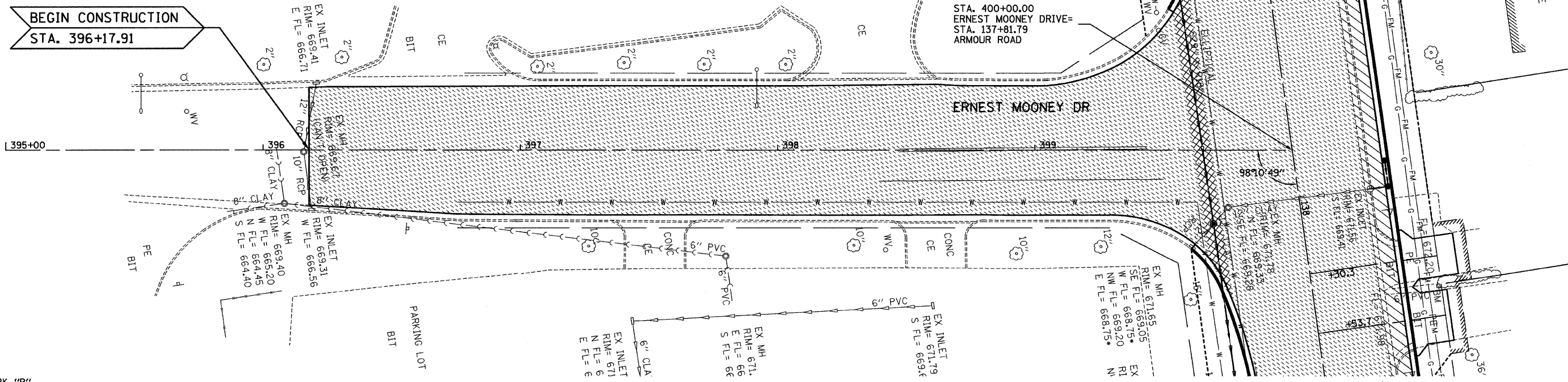
F.A. RTE.	SECTION	COUNTY	TOTAL SHEETS	SHEET NO.
*	**	KANKAKEE	109	28
STA.		TO STA.		
FED. ROAD DIST. NO.		ILLINOIS FED. AID PROJECT		

- LEGEND**
- HOT-MIX ASPHALT SURFACE REMOVAL COMPLETE
 - PAVEMENT REMOVAL
 - PAVEMENT WIDENING

• FAU ROUTE 6176 (ARMOUR ROAD)
 • SECTION (79)W&RS & 14ORS



BEGIN CONSTRUCTION
 STA. 396+17.91



BENCHMARK "R"
 RAILROAD SPIKE IN POWER POLE AT N.E. CORNER
 OF ERNEST MOONEY DRIVE AND ARMOUR ROAD
 ELEV. 673.44

NOTE: BITUMINOUS SURFACE REMOVAL
 STA 396+17.91 TO STA. 399+62
 SHALL BE 1/2"

PLAN

DATE	BY
11/03/03	CHAMLIN
11/03/03	JAC
11/03/03	JAC

NO. _____

PROFILE

DATE	BY
11/03/03	CHAMLIN
11/03/03	JAC
11/03/03	JAC

NO. _____

