

FAU RTE.	SECTION	COUNTY	TOTAL SHEETS	SHEET NO.
*	**	KANKAKEE	109	45
STA. _____ TO STA. _____		FED. ROAD DIST. NO. _____ ILLINOIS FED. AID PROJECT		
* FAU ROUTE 6176 (ARMOUR ROAD)				
** SECTION (79)W&RS & 14ORS				

DETECTOR LOOP SYSTEM	Ø	LOCATION	TURNS PER LOOP	INDUCTANCE READING (MICROHENRIES)	FREQUENCY (HERTZ)	J PIN STATUS
A	4	SBRT	5	261	37,779	ON
B	4	SB	4	714	22,841	ON
C	6	WB FAR	6	642	24,088	ON
D	6	WB STBR	4	570	25,564	OFF
E	1	WBLT	4	834	21,134	ON
F	OL1	NBRT BK	5	384	31,146	OFF
G	OL1	NBRT FR	5	560	25,792	ON
H	3	NBLT RL	4	657	23,812	ON
I	3	NBLT LL	4	659	23,775	ON
J	2	EB FAR	6	650	23,940	ON
K	2	EB STBR	4	592	25,085	OFF
L	5	EBLT	4	858	20,837	ON

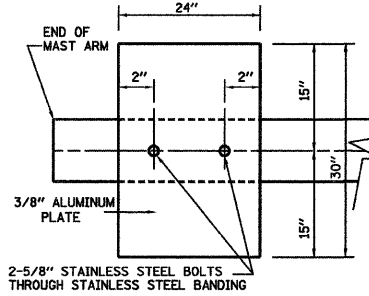
J PIN STATUS: "ON" MEANS STANDARD DETECTOR SETUP. "OFF" MEANS J WIRE HAS BEEN DISCONNECTED. BUT INTACT, AT THE HARNESS PANEL WITH THE NECESSARY SPADE CONNECTION ATTACHED, MARKED, AND INSULATED.

STREET NAME	COMPONENT	NUMBER	WATTAGE EACH	BURNTIME %
ARMOUR ROAD	RED	8	10	35
	YELLOW	8	19	5
	GREEN	8	14	60
	RED ARROW LT.	4	8	60
	YELLOW ARROW LT.	4	9	5
WASHINGTON AVENUE	RED	2	10	60
	YELLOW	2	19	5
	GREEN	2	14	35
ERNEST MOONEY DRIVE	RED	4	10	50
	YELLOW ARROW LT.	2	9	5
	GREEN ARROW LT.	2	3.4	45
	YELLOW ARROW RT.	2	9	5
	GREEN ARROW RT.	2	3.4	45
TRAFFIC SIGNAL CABINET	CONTROLLER	1	6	100
	VEHICLE DETECTORS	11	4	100
	UPS	1	50	100

AGENCY RESPONSIBLE FOR TRAFFIC SIGNAL ENERGY CHARGES: VILLAGE OF BOURBONNAIS

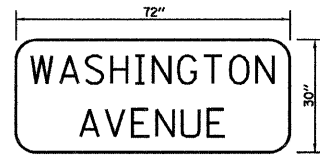
NOTE:

DAMPENING DEVICE SHALL CONSIST OF A 24" X 30" TYPE 1, UNPAINTED ALUMINUM SIGN STOCK MOUNTED HORIZONTALLY ON TOP OF MAST ARM WITH THE 30" LENGTH PERPENDICULAR TO THE ARM. COST OF THE DAMPENING DEVICE IS INCLUDED IN THE MAST ARM PAY ITEM.



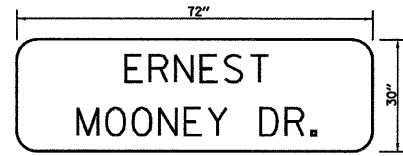
NOTE: MOUNT DAMPENING PLATE TO END OF EACH TRAFFIC SIGNAL MAST ARM.

DAMPENING PLATE DETAIL - TOP VIEW



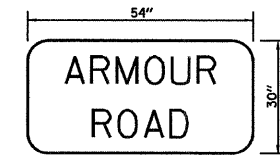
TYPE ZZ SHEETING REQUIRED
8" D SERIES LETTERS
2 SIGNS REQUIRED = 15 SQ. FT. EACH
= 30 SQ. FT. TOTAL

THIS STREET NAME SIGN SHALL BE PLACED ON THE NORTHWEST CORNER AND SOUTHWEST CORNER MAST ARMS PARALLEL WITH WASHINGTON AVENUE



TYPE ZZ SHEETING REQUIRED
8" D SERIES LETTERS
2 SIGNS REQUIRED = 15 SQ. FT. EACH
= 30 SQ. FT. TOTAL

THIS STREET NAME SIGN SHALL BE PLACED ON THE SOUTHWEST CORNER AND NORTHEAST CORNER MAST ARMS PARALLEL WITH ERNEST MOONEY DRIVE



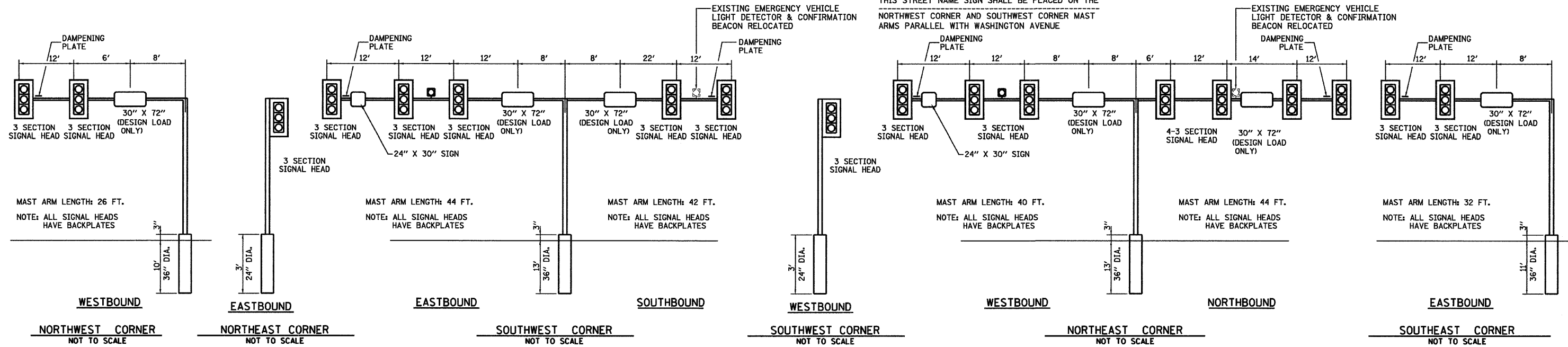
TYPE ZZ SHEETING REQUIRED
8" D SERIES LETTERS
2 SIGNS REQUIRED = 11.25 SQ. FT. EACH
= 22.5 SQ. FT. TOTAL

THIS STREET NAME SIGN SHALL BE PLACED ON THE MAST ARMS PARALLEL WITH ARMOUR ROAD



TYPE ZZ SHEETING REQUIRED
4 SIGNS REQUIRED = 5 SQ. FT. EACH
= 20 SQ. FT. TOTAL

THIS SIGN SHALL BE LOCATED 6" TO 12" TO THE RIGHT OF EACH 5 SECTION MAST ARM MOUNTED LEFT TURN SIGNAL AND DIRECTLY BELOW AND PARALLEL TO THE BACKPLATE OF POST BRACKETED 5 SECTION LEFT TURN SIGNAL FOR THE EASTBOUND AND WESTBOUND APPROACHES.



ARMOUR ROAD / WASHINGTON AVENUE / ERNEST MOONEY DRIVE

PLOT DATE = 12/06
FILE NAME = ZM43807SDET.DGN
USER NAME = ARR

REVISIONS	
NAME	DATE

ILLINOIS DEPARTMENT OF TRANSPORTATION
TRAFFIC SIGNAL DETAILS
FAU ROUTE 6176 (ARMOUR ROAD)
SECTION (79)W&RS & 14ORS
KANKAKEE COUNTY

SCALE: VERT. _____
HORIZ. _____
DATE 01/09
DRAWN BY ARR
CHECKED BY JLS